

---

# AS THE WOOD TURNS

---

June 2009 Issue 144

---

Down in the Dust Bowl  
Taking a dip in an itty bitty pool!



Turned pool by Andy Osborne, Bass fish carving by Phil Connolly (from basswood?)

## 2009 MSSW Officers

**President** - Hank Cahill (781) 878-0234  
**Vice President** - Richard Friberg (508) 378-2436  
**Treasurer** - Wally Kemp (781) 826-6254  
**Secretary** - Mal Partridge (781) 843-3883  
**Librarian** - Ron Robertson (781-545-8295)  
**Newsletter** - Mal Partridge (781) 843-3883  
**Web site:** <http://msswt.org/> or <http://www.msswt.org/>



## Next Meeting

Tuesday, June 23, 2009, 7:00 P.M.  
At Hank Cahill's *Dust Bowl*  
Refreshments by: Steve Wiseman  
Member Challenge: Bird House  
See Web Site for details  
Demo: Wally Kemp - Natural Edge Bowl

## Meeting Minutes

The meeting was called to order at 7:00 pm at Hank Cahill's Dust Bowl

### President's Report and General Business

Guests present were: Steve Blampied from Hanover, Jerry Carlson from Warren, PA, and Tom Bushman from Westwood.

Hank thanked members for the card he received from them while he was in the hospital.

Correspondence was received from Mini Monster Hollowing System, AAW membership forms and Symposium applications, 2 CNEW newsletters, a Surrey England woodturners newsletter (190 members) and two packets from Anderson Ranch in Colorado.

Mal is preparing a list of all demonstrations we have had from 1997 to date. He also brought in the AAW member collaborative half size Gnome Engine we made for the 2000 AAW Charlotte Symposium for new members to see what we did as a group. We placed third that year and won a first place with our Rhode Island Capitol Dome Member Collaborative at the Providence symposium in 2002. The Dome is on display in a case outside the Senate Chamber in the Capitol.

The binder Mal passed around contained many new articles and details about our Gnome Engine and pictures of full size Gnome Engines made by two museums from Mal's drawings.

Wally reported \$1318 in the treasury. Thayer Academy in Braintree will host an MSSW show during the years 2010-2011.

Ron the librarian reported on two new DVD's added to library. He also showed a small lathe mounted on wheels for easy transport and asked for comments and ideas. Members should return DVD's that are out on loan. He also asked for someone to volunteer to take charge of our Lathes and equipment. (Dave Hutchins is now our Equipment Czar)

Five MSSW members attended and reported on the Jimmie Crewes demonstration at the Cape Cod Woodturners.

A committee to arrange for future demonstrations and make Hank's shop ready with equipment running properly and with support details such as chart paper, video equipment, refreshments, etc., was voted on and includes the following members: Sid Katz, Chairman, Wally Kemp, Don Diedrich, Bob Sutter, Bob Allen, Dave Hutchins, and Richard Friberg. It is planned that we will have four Saturday demonstrations per year if possible. Members will be asked for names of turners they would like to see and will be kept informed of the committee's meetings. They will also be informed of any ideas or changes that require a vote by members.

Saturday Hand's On sessions will be theme based, but continue to allow hand's on turning and learning for beginners and for informal discussions and turning by members and guests.

Bob Allen reported on his efforts in obtaining outside demonstrators using AAW demonstrator directory. Bill Grumbine will be demonstrating in August, date and time to be announced.

Ken reported only six members have signed up for the Cohasset South Shore Art Festival, June 19, 20 and 21. He needs 10-12 members to sign up.

**Bob Trucchi reported that our website placed 5th in The AAW Chapter Website Contest, Congratulations Bob!!!**

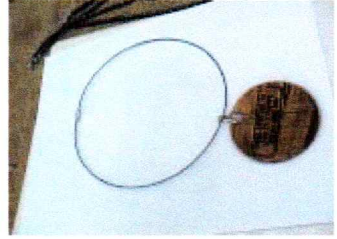
Hand's On at Hank's set for Saturday, June 13th 10am.

### New England Woodturning Symposium 09



Photographs by Jeff Keller

# Demonstration By John Destrampe

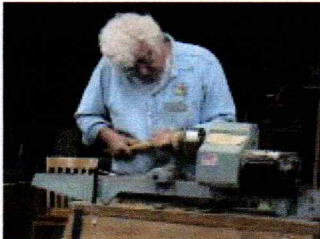


John (call me Dusty) gave an interesting demonstration on how he designs and turns wood jewelry



Spalted wood grain selection is important for medallions

Work in progress



Turned wood jewelry Sells!

Prices - \$25 -27.50 - 2 for \$40  
Average sales \$200/show

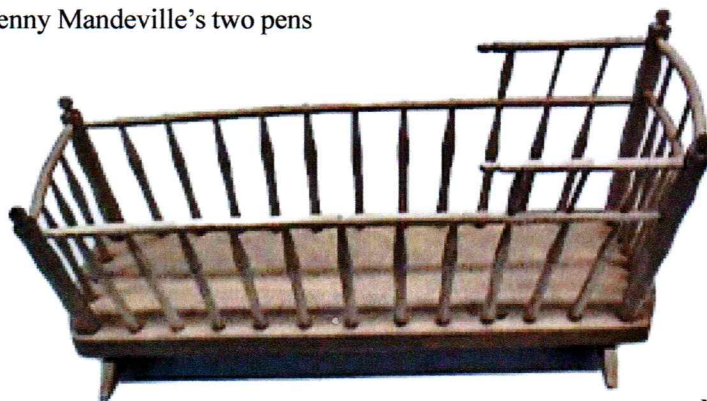


\$\$\$\$\$\$\$

< Thin Parting Tool mde from saw blade

## More Show & Tell

Lenny Mandeville's two pens



Lenny Langevin's 2'ft Maple cradle model



Mike Wells made this pen holder as a gift to Dave Hutchins

# Show & Tell

May 2009



Wally's 2 Natural edge pieces



Ian's Segmented Bloodwood and Yellowheart piece made for parents 50th Anniversary



Bernie's Bird House

Bill Dooley's Walnut piece and Ambrosia Maple bowl



Bob Trucchi's two Holly bowls



Ron's Cherry ball



Bob Allen's Cherry, Walnut and Mahogany pieces

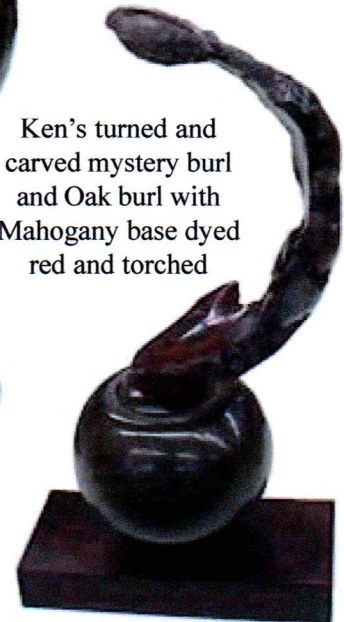


Ben Natale's Hawthorne sphere



Mike Veno made two large stained black Mahogany pieces for a customer

Ken's turned and carved mystery burl and Oak burl with Mahogany base dyed red and torched



Mike Dempsey's Apple vase and Cherry bowl



Jeff's Madrone Burl toothpick holder