

---

# AS THE WOOD TURNS

---

June 2011 Issue 167

**Next Hands On** – June 11th



Our new lathe is up and running with a new chuck available to members for use and for demonstrators in the future. Nigel reported that there is just under \$100 left over from the purchase. After some discussion, it was decided by members to give the money left over to the club treasury. Total money originally raised amounted to \$4036. Good job Nigel!

Hank volunteered a set of Cole jaws for the new lathe that he had available.

Visitors/New Members- Tim Brady from Plymouth, Ma and Jim Leatherwood from Taunton, Ma

Hank reported correspondence in the form of Packard catalogues, one from Eagle American and the AAW Resource Directory which is mailed to members. He had also received some weed pot inserts which he made available to members for future use.

Farm Day will be held September 24<sup>th</sup> in Marshfield where it was decided that we will demonstrate as well as sell turned items.

In October there will be a show at the Abington Senior Center on a date to be announced.

I reported on receiving sample copies of Woodturning magazine from London available at a cost of \$60 a year for a subscription (12 issues) . {a copy usually sells for \$9.50/issue}

Wally reported \$925. in the treasury.

Wally reported that we are invited back next year in February to the James Library in Norwell. As wall hangings were the theme, we should keep that in mind and have someone present a demo on a wall hanging. After discussion it was decided that Wally would demonstrate on turning wall hangings at the September meeting on the 27<sup>th</sup>. Steve Wiseman will also demonstrate turning a natural edge bowl as already scheduled.

## 2011 MSSW Officers

**President-** Hank Cahill (781) 878-0234  
**Vice president** Nigel Howe (508) 537-3394  
**Treasurer** Wallace Kemp (781) 826-6254  
**Secretary** Jeff Keller (781) 878-7310  
**Librarian** Charles Rosen (781) 848-6589  
Web site: <http://www.msswt.org/>



## Next Meeting

**Tuesday, June 28, 2011, 7:00 P.M.**  
At Hank Cahill's *Dust Bowl*

Refreshments by: Nigel Howe  
**Demonstration** Ken Lindgren –  
multi-axis turning



Bob Allen reported that there is still some space available for the hands on Wednesday, July 27<sup>th</sup> for the followup to the Jimmy Clewes demonstration. He has sign up forms available. This was seconded by Nigel who mentioned that at the Rhode Island Woodturners meeting he attended they thought that \$20 for the demo and \$80 for the hands on the following day were bargain prices.

Andy Osborne addressed the upcoming South Shore Arts Festival June 17<sup>th</sup> through the 19<sup>th</sup> at the Cohasset Commons in the center of town. If you plan to sell, there is a sign up sheet with days and time slots to help out at the booth. If you plan to demonstrate turning, you must be a member of AAW. Also if you plan to sell, you will share in the booth space expense. Hours of the show are: Friday, June 17- 2pm-7pm, Saturday, June 18 10am-7pm and Sunday, June 19 noon-5pm. Bring your own chairs, tools and wood for demos.

Nigel passed out fliers with information on our Hands On / Cookout Saturday, July 16<sup>th</sup> at his place, "Nigel & Gill's Workshop / House" at 9 Wallace Street, Berkeley, Ma. Pot luck lunch, bring your spouse, friend also an appetizer or dessert, bring chairs, all are welcome. Questions? Nigel's cell- 508-837-3394.

David Rice announced that we have new name badges. If you have a nickname or other name preference let him know. David also reported that he had attended the Alan Carter demo in Derry, New Hampshire and that it was first rate.

Safety is always a concern in turning. Recently there has been national publicity on three bad accidents to turners, two fatal. Members are urged to use common sense in turning.

### Challenge collaborative

6 items were brought in at the last meeting to be completed by others. Wally, Nigel, Jeff, and Paul returned with their items.



Paul O'Neil finished Bernie's Oak bowl

Jeff Keller embellished Wally's bean pot cherry bowl and added a Maple saucer with a Rosewood spoon

Wally Kemp's redesigned Nigels cherry burl bowl. He reshaped the lid, hollowed out, supported it w/Maple painted red + brass rods, a Holly base and ebonized Walnut.

Nigel brought a small Maple bowl about 4 inches in diameter (which might have been Bernie's).that he dyed blue and green with a trans tint dyes on the outside



Hank has bottles of super glue available to members at his cost.

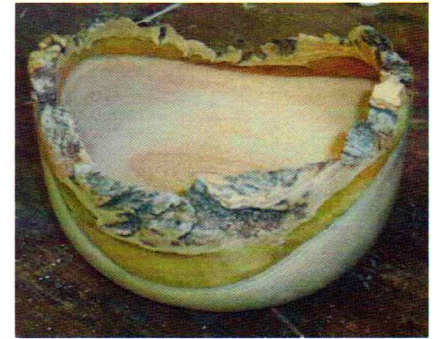
### Show and Tell



Paul O'Neil bowls of Walnut, Maple and Sassafras



Bob Trucchi – threaded Lignum Vitae box The outer wood oxidized green after turning from the original brown color.



Steve Wiseman – natural edge Cork tree bowl finished with a water based poly



Bob Trucchi also showed a Walnut hollowform whose outer surface was carved with eight twisted swirls. He used a lacquer finish on both the hollowform and the Lignum Vitae box.



Fred Ayers nest of Red Oak bowls turned and cored with a One Way coring system.



Nigel Howe – Sugar Maple vase



Tim Ayers sugar Maple bowl



Andy Osborne Maple natural edge Cornucopia bowl finished with Urethane



Wally Kemp - Box Elder natural edge bowl, used a water base poly finish to keep the color white, applied with an airbrush in three thin coats.



Macasser Ebony & cocobolo pens and Cocobolo kaleidoscope by Ron Robertson.





Bill Dooley-- Maple burl with hardener and CA glue.



Sydney Katz's - Sassafras plate



Bill George - segmented bowl of Mahogany & Poplar & Walnut carved base



Ben Natale – end grain Ambrosia Maple bowl w/burnt edge and color from a felt tip.



Bill George -The top trim and base are walnut. The basic wood is poplar. The design is cherry and maple. The finish is four coats of tung oil and the Beal system.

## Demonstration

John “Dusty” Destampe spoke about on “Turning a Medallion”

Emphasized selecting wood with figure, cut it out and size it from 2 ¼ to 2 3/8” in diameter.



Turn side grain as opposed to end grain.

After parting off the medallion, rotate the piece to determine which way is the most attractive for placement of the ring to mount to the necklace.

He mentioned that women want what “*no one else has*” and that they especially like red cedar as the red and white color of the wood goes well with what they like to wear. He recommends asking your customers what they think.

If you soak the wood on the medallion, you can use a suction cup to hold it while sanding on a belt sander.

He recommends finishing the piece with 2 coats of sanding sealer and 2 coats of spray enamel for a high gloss. Use either Krylon High Gloss Enamel or Rustoleum Crystal Clear Enamel from Home Depot. Shine sells.

He gets jewelry supplies at Gemorama on Webster Street (Rte. 123) in Hanover near Rte 53.