
AS THE WOOD TURNS

June 2018 - Issue number 244

“Next” Hands On was June 9th and no July Hands On

We invite beginning turners to a learning opportunity at the Hands On for one on one instruction. Spindle or bowl turning techniques will be covered. Please reserve your lathe with Pablo Gazmuri @ pgazmuri@comcast.net

Minutes of the May 22nd meeting

Visitors: Bob Gaylord – Bridgewater, John Hall – Weymouth, Michael Wadell - Marshfield

Steve recognized Nigel Howe for past contributions to the club by awarding him a lifetime membership. Nigel will be moving to Maryland soon to be closer to family.

The Christmas Party will take place on Tuesday, December 18, 2018 at 6:00 PM

The Summer Party will take place on Saturday, July 28, 2018. Peter Soltz will be hosting.

Cohasset scheduled for June 15th to 17th - Lenny Langevin is in charge of the event. He has a signup sheet for those attending to say when they're available to help man the tent. Currently only 10 people are signed up so a 20' show tent and a 10' turning display tent should be sufficient.

There is also a volunteer signup sheet for the Arnold Arboretum event on October 6-7, 2018.

This owl, that Derek Weidman turned during his demonstration, was available for silent auction during the meeting. Lenny Langevin had the winning bid. Congratulations Lenny!



<p>MSSW Officers</p> <p>President- Steve Wiseman (508)-285-9394 stevwsmn@aol.com</p> <p>Vice president Len Langevin (508)-789-4211 lennysminiatures@gmail.com</p> <p>Treasurer John Duggan (508)-583-7930 john.duggan06@comcast.net</p> <p>Secretary Tim Rix (617)-259-5618 rix.tim@gmail.com</p> <p>Librarian Lenny Mandeville (508)-586-7679 manleo@comcast.net</p> <p>Webmaster Tim Rix (617)-259-5618 rix.tim@gmail.com</p>		<p>Tuesday June 26, 2018 - at Hank's dust bowl at 409 Washington St., Abington, MA at 7 pm</p> <p>Refreshments – supplied by Bill Dooley</p> <p>Demo - by Ian Manley on turning a winged bowl.</p>
---	---	--

The Lutheran House of Prayer is still looking for participants for their craft show. See Steve if you're interested.

The Cape club is having a video demo day featuring Mike Mahoney October 20, 2018

Donations for the wood swap tonight were from Bob Allen and Joe Centorino.

Lenny mentioned that there is a woodturning exhibition at Highfield Hall in Falmouth, MA featuring Jeff Granger and Mike Grady. The exhibition is open through June 17, 2018.

There was no "Bringback" at this meeting.

Tonight's demonstration is a bird's mouth bowl/vase by Steve Wiseman.



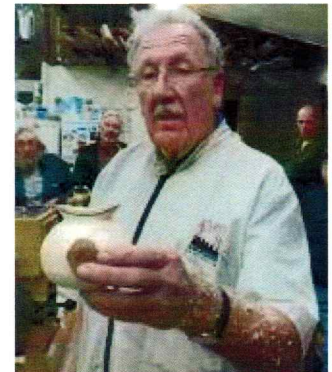
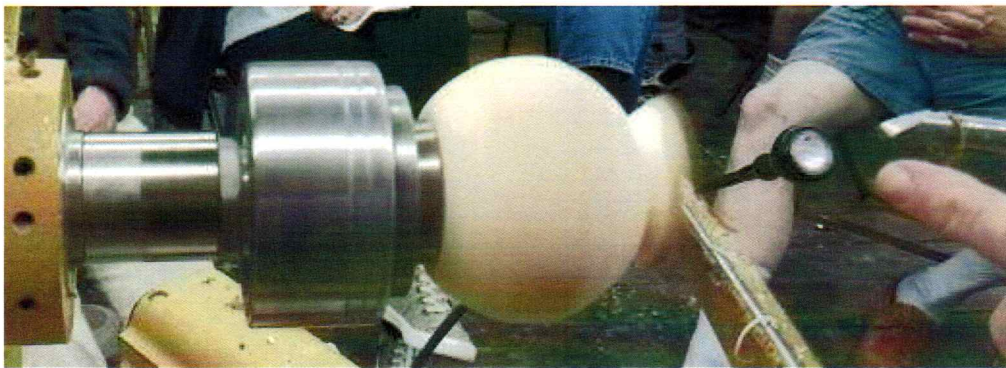
- Start with a piece of green wood approximately 4" - 5" in both diameter and length
- The location for the mouth should be symmetrical for the best finished look
- Drill a shallow hole in the bark for the drive center for mounting. The hole should be slightly larger than the drive center but not too large as this is where the mouth will be located.
- Align the edge of the blank to be parallel to the headstock. The grain should be oriented 90° to the lathe bed
- Form a tenon at the tailstock end of the blank
- Using a bowl gouge, turn the blank to a basic sphere shape to start forming the shape of the bowl.
- Mount the blank in your chuck



- Refine the shape of the mouth and the outside shape of the bowl to final size once it has been mounted in the chuck
- Hollow the inside, clearing the chips periodically. Steve used a Hunter #1 tool for this stage.

- Part off to remove the piece from the tenon and allow to dry before final sanding and finishing

Some pictures from the demonstration



Using Google to find "*birds mouth bowl*" turns up several short [8 to 15 minutes long] video's on the web on how to turn a birds mouth bowl, here is one link.....

<http://www.woodworkersjournal.com/turning-a-birds-mouth-bowl/>

Show and Tell



Nigel Howe - spalted sugar Maple - red & blue dye followed by 6 coats of lacquer, flattening between each coat



Ken Lindgren - Maple burl - red & blue dye, torch treatment of the rim & polyurethane finish



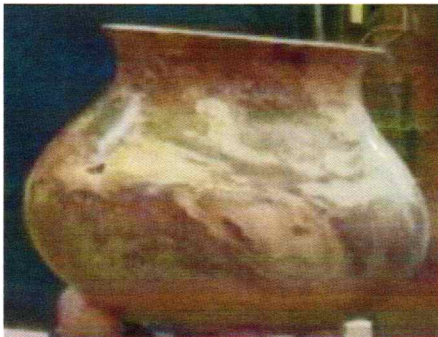
Wally Kemp - spalted Beech with natural edge - mineral oil & wax applied with sandpaper



Peter Soltz - Maple bowl



Joe Centorino - Maple burl - Tung oil and lacquer finish



Kevin Mulligan – showed 3 turnings : a Maple burl bowl turned green & microwave dried over a period of 2 weeks & a Tung oil & wax finish; a Maple burl with a carved rim, Tung oil & wax finish; and a platter from Bernie wood of Eucalyptus burl/Cocobolo



Lenny Mandeville - made a manual sander using a flanged bearing purchased from McMaster-Carr



Lenny Langevin - Bernie wood Cherry/Cherry burl/Mahogany finials



Ellen Williams - Cherry burl - Yorkshire Grit finish / piece not completely dried



Tim Rix - Berkley Maple - Tung oil finish



Steve Wiseman - Bernie wood Redwood burl - sanding sealer and wax finish

The 5th New England Woodturning Symposium took place Saturday May 12th at Pinkerton Academy in Derry New Hampshire. The \$75 registration fee included a box lunch. It is sponsored by the Guild of New Hampshire Woodworkers and the Granite State Woodturners.

The last demo I attended wasn't all that informative. The presenter told and showed us how he turns a basic bowl. I left the session a little early to see about getting some wood but the vendors had packed up. The Mass. South Shore Woodturners were there in force. I counted 15 of us there along with a young lady from Gateway. Attending were Steve Wiseman, Wally Kemp, Bill Dooley, Andy Osborne, John Duggan, Kevin Coughlin, Ian and Dan Manley, Ken Lindgren (who was one of the presenters), Charlie McCarthy, Fred Johnson, Kevin Mulligan, Bob Allen and David Rice and of course yours truly (Jeff Keller).



Nick Rosato who gave the first presentation I saw on "Carving Crotchwood"



Pictured are some of his finished pieces



Michael Foster presented "Turning a Sphere -and then turn it into an Octahedron"



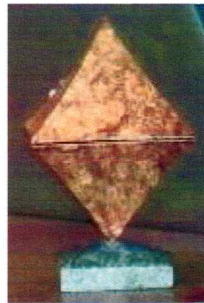
Turning the sphere is the first step



Michael positions the sphere in the jam chuck after marking off the 8 axis points with a compass and turning two of them.



The completed Octahedron before carving off the tenons. Michael said leaving the tenons allows the work to be held in the jam chuck.



Finished Octahedron which Michael had also converted into a box. Nice burl wood.



Here is an inside view. It can be lifted off the stand.



Wally holds the Octahedron box that was pretuned. At the right is a sphere in Michael's hands.





Janet Collins addressed a packed room on "Inlay Techniques for Woodturners"



Examples of her inlay and shading work. The latter accomplished with burning wood dowels in a heated frying pan filled with sand.



Pictured are turned and decorated platters by Janet Collins

Past Events

June 9th – was to be a busy day with a chainsaw party scheduled in Marshfield and Hands-on in Abington. No information was available at the time of writing this newsletter.

Upcoming Events

South Shore Arts Festival Father's Day weekend on Cohasset's Common

AAW's 32nd Annual International Symposium! June 14 -17, 2018

Arboretum show - Columbus Day weekend (October 6th & 7th).

Farm Day 2018 - Oct. 20 (3rd Saturday in Oct.) with Oct. 27 as a raindate

Articles of general interest

Dues -It's that time of year again. Club dues are now due for 2018. You can pay at any meeting of Hands-On by Cash, Check or Credit Card or you can go to the club website to pay through PayPal using a Credit Card. Remember to fill in the note field if you are paying for someone other than yourself. Dues are \$50.00 per person.

<http://www.msswt.org/membership.html>

From: peter soltz <psoltz29@gmail.com> "Sidney and I have combined our collections of Woodsmiths, and we have issues 7 thru 145 available for no charge if one our members would like them".

Items For sale at the Club store : – contact Ron Reynolds at reynoldson@comcast.net

JSP respirators spare parts (batteries, tear off shields, filters, pre-filters, and replacement face shield) available in the store

MSSWT MEMBER STORE

GLUES:		PRICE
	2 OZ. CA	4.50
	2 OZ. RUBBERIZED	6.00
	8 OZ. CA	13.00
	16 OZ. CA	23.00
	THICK, MEDIUM, THIN: SAME PRICE	
	2 OZ. ACCELERATOR (spray bottle)	3.50
	8 OZ. ACCEL. REFILL	5.75
	2 OZ. DEBONDER	3.25
	4 OZ. EPOXY	6.00
	2 OZ. REPLACEMENT CAPS	0.50
	LONG NOZZLES	0.75
	2 OZ. EMPTY BOTTLES	0.75
ANCHORSEAL:		
	LARGE (approx 1 gallon)	16.00
	MEDIUM (approx. 1/2 gallon)	9.00
	SMALL (approx. 1 quart)	5.00
SANDING DISKS:		
	2"	3.50
	3"	4.50
	2" or 3" Replacement H&L Disk	0.50
	2" HOLDER	10.50
	3" HOLDER	12.50
	2" BLUE HOLDER	14.50
	3" BLUE HOLDER	16.50
	1/2" SOFT INTERFACE PAD EXTENSION	5.50
	3" HANDY SANDER (Palm Sander)	8.50
	SANDING TACO	4.50
	2 or 3" HAND HELD HOLDER (Kidney Shape)	12.00
CLOTHING:		
	CAPS	15.00
	TEE SHIRTS	16.00
	2X TEE SHIRT	18.00
	POLO SHIRT	27.00
	2 X POLO SHIRT	29.00
MISCELLANEOUS:		
	3" Lambswool Buff	9.00