

AS THE WOOD TURNS

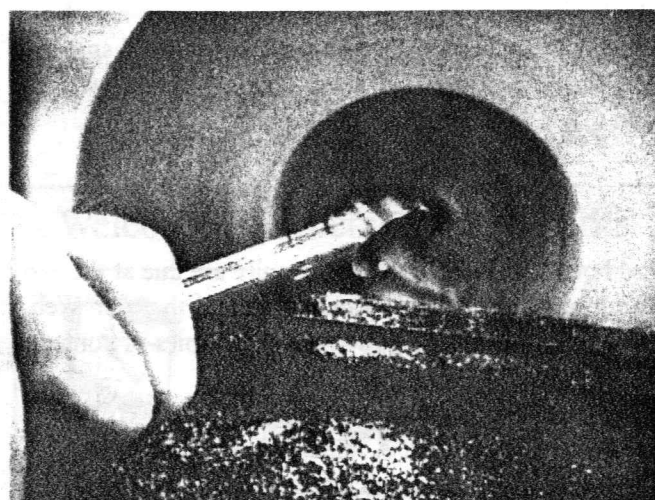
March 1999

Chips Fly At Great Meeting

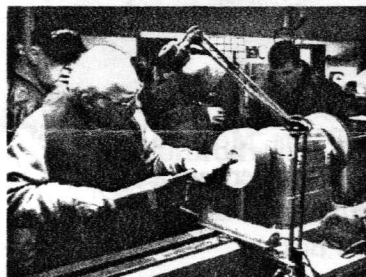
With two lathes in operation members pick up turning tips and get to try new tools and techniques



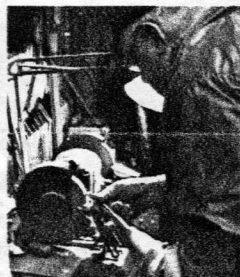
Wally Kemp tries Dave Hutchins ring tool



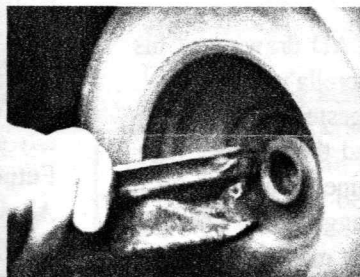
Closeup of ring tool shearing end grain to nice finish



Felix Troiano starts bowl



Hank grinds fingernail



Felix gives it a try with new shape - now that's much better!



Felix gives it a try with new shape - now that's much better!

1999 MSSW Officers

President - Hank Cahill (781) 878-0234

Vice President - Gary Levine (781) 843-3695

Treasurer - Wally Kemp (781) 871-1390

Secretary - Charles Rosen (781) 848-6589

Librarian - John Murphy (781) 834-1179

Newsletter - Mal Partridge (781) 843-3883



Next Meeting

Tuesday, March 23, 1999

7:00 P.M.

At Hank Cahill's *Dust Bowl*
Refreshments by: **James Taralli**

Member challenge project: **A turned ball**

Guest Speaker: **Tom Kamila**

Meeting Minutes

The February meeting was called to order at 7:18 pm at Hank Cahill's *Dust Bowl*

President's Report

Hank reviewed correspondence and literature:

- Metabo 3" Random Orbit Sander should be excellent for turned object finishing due to small diameter.
- Audubon Farm Day will be Saturday, October 2, 10am to 4pm - rain date Oct 3. We have again been invited to demonstrate. Last years Farm Day was enjoyed by members who participated or visited. This year it is hoped that more members will take part.
- Sharon NH Art Show pickup will be March 7.
- Hank requested information from AAW for a list of demonstrators in our area. Also there is a metal spinner Herb Sayce in Hanson, MA and David Ellsworth will be in CT in March. Hank will check.

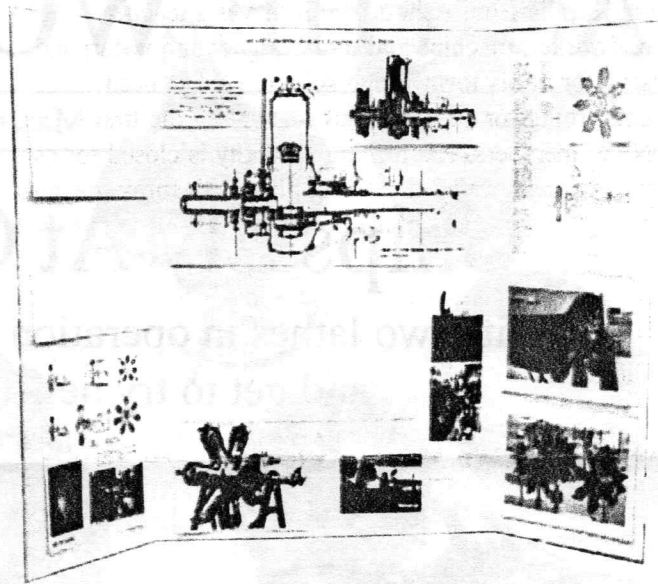
Old and New Business

Bird houses for Habitat for Humanity are due at the March meeting. **Charlie Rosen** reported that our Web site is operational and showed sample copies of content

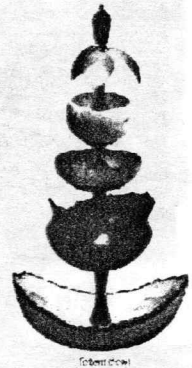
Suggestions for the AAW challenge project were presented by members. A minimum of 6 members would be required to participate. **Wally Kemp** agreed to head the group if we decide to proceed with a project this year, which seems doubtful due to time constraints.

John Shooshan showed a large CAD drawing of his bicycle, a formidable project. Cinderella's pumpkin coach and a steam loco were suggested and drawings were requested for evaluation. And the member who proposed a perpetual motion machine, please submit full details. **Mal Partridge** had two suggestions. The first, a Gnome rotary aircraft engine first manufactured in 1909 in France, was presented with drawings of the turned elements and illustrations of the actual engine. The finished engine would be half scale, approximately 18" in diameter and mounted on a stand, to conform to challenge size constraints. This project would be most challenging with jigs and fixtures required to locate the 7 cylinders and push rods on the crankcase, and spark plugs on the cylinders. A turning tool ground to form the cylinder fins would also be required. Members seemed overwhelmed by the scope of the project and Mal suggested it as a year 2000 submission!

50 HP Gnome Rotary Engine Circa 1909



The second suggestion was a "Totem Bowl" shown with a mock up illustration consisting of turned bowls and objects connected with spindle elements to create a towering assembly. The spindles could be hollow and water (or Champagne) could be pumped up to create a waterfall effect. The bowls would have to be alcohol and waterproof of course! This would be a quick and easy project as existing bowls could be used - not much of a challenge, but a lot of fun to think about.



March meeting member challenge is - turn a ball, any size. A bocce ball is 3 1/4" dia. Meet the challenge!
Future meeting challenges for members are as follows:
April - Scratch Awl (see *Shop Notes* issue 44 pg. 28)
May - Goblet, **June** - Lidded Box

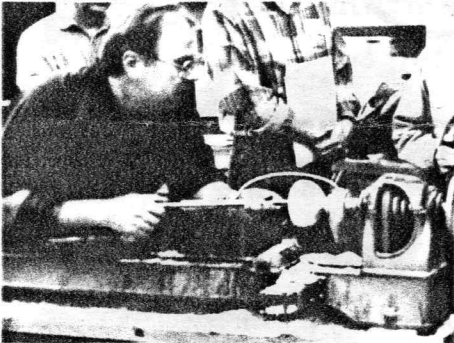
Hank reported that member **Gary Levine**, whom we have not seen for some time, has a bad arm and cannot turn. The members miss you, Gary, "come on down"!

Wally reported \$1326+ in the treasury. It was agreed he would purchase a *Stronghold chuck* for the our lathe.

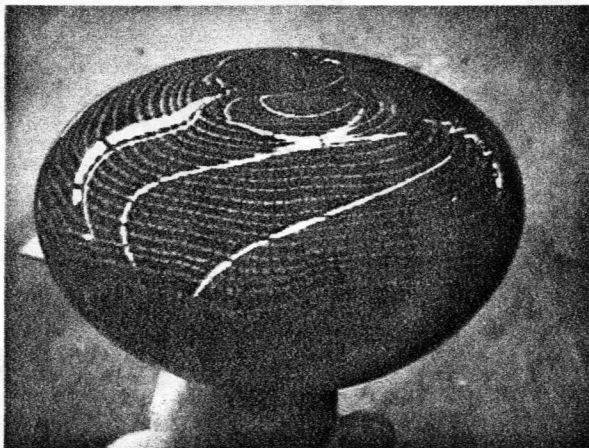
Congratulations to **Steve Sarro** and **Jack Nash** who have juried bowls at the Duxbury Art Association Winter Show.

Tom Kamila Our March Guest Speaker

Tom Kamila from Ashburnham, MA is a teacher, woodworker, machine and tool designer and vocational instructor at his town's high school. He has been woodturning for 12 years and was one of the first CNEW members. His turning specialty is closed forms using colored acrylic finishes applied with spray gun on rotating fixture. His unique bowls, turned from red oak, sparkle while showing the texture of the oak surface. Our 1999 calendar featured one of his forms.

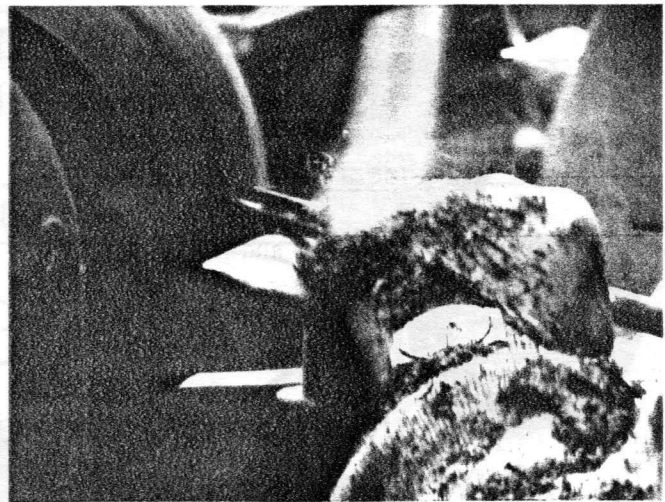
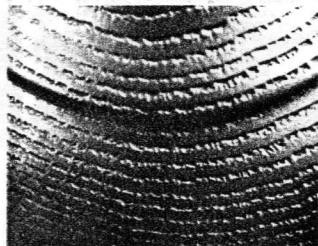


Tom at work using hooker tool at CNEW Symposium



Black form on stem used for finishing

Closeup showing red oak detail



White knuckle turning - or is that a ray of hope?

Identify yourself with a MSSW name badge now available at the March meeting.

It helps guests, new members, and old folks!

Welcome new member Paul Marks



Library Notice



John Murphy, Librarian has added a new book "Lathe Turned Objects", and two new videos "Bowl Turning" by Dale Stibbs Donated by John and "Turned Boxes" by Ray Key. donated by Ray Cartier

The following items are **overdue** and should be returned to John Murphy as soon as possible so that other members can utilize them. If not returned the member will be responsible for replacing.

Video: Natural Edges & Hollow Forms by Chris Stott
Checked out 4/28/98 by **Emilio Iannuccillo**

Video: Tips For Turners by David Ellsworth Copy #2
Checked out 10/27/98 by **Richard Freitas**

Book: The Art of the Lathe by Patrick Spielman
Checked out 10/27/98 by **Chris Tsioropoulos**

Book: Useful Beauty by Dick Spring
Checked out by **Ray Cartier**

Special Event

New Work, Old Ways

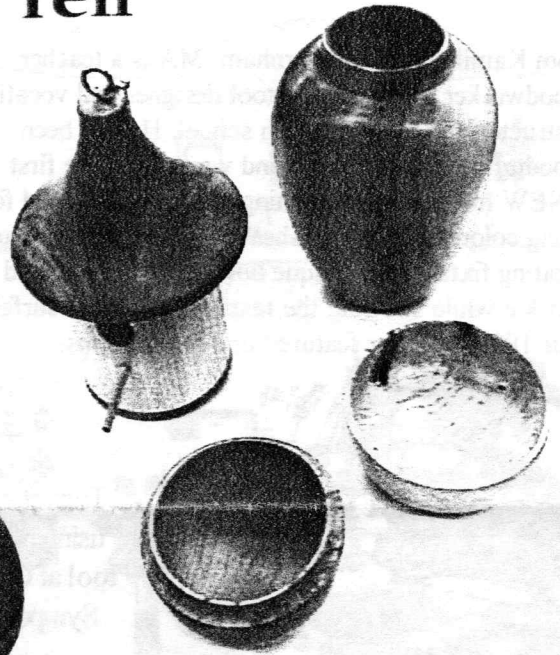
From North Bennet Street School
March 3rd -April 8th, 9am-9pm

McCormick Gallery at Boston Architectural Center
320 Newbury Street, Boston, MA

Show and Tell



Felix Triano's nice bowl assortment



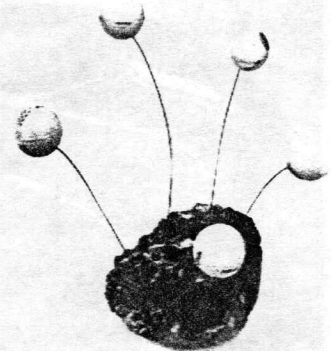
Richard Friberg keeps on producing a variety of fine pieces



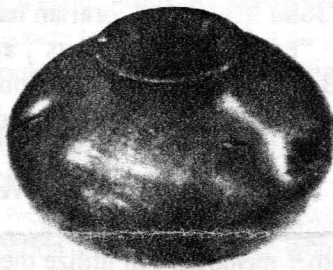
Jeffrey Keller's beautiful cherry burl bowl



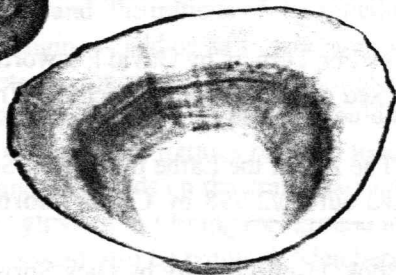
Steve Sarro's elegant bird house of walnut, ash and parallam



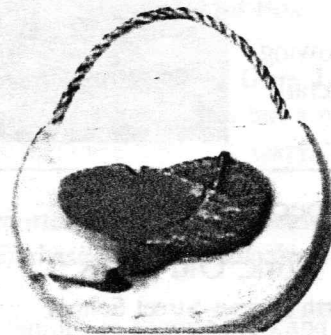
5 bird houses in a disastrous hazard by Wally Kemp



Manzanita root and maple burl quality turnings by Roger Hill



Spalted tupelo (from Mississippi) cup with carvings and very thin walled (1/16") bowl by Hank Cahill



Emilio Iannuccillo's first carving attached to maple turning - Turned hearts for valentine presents

