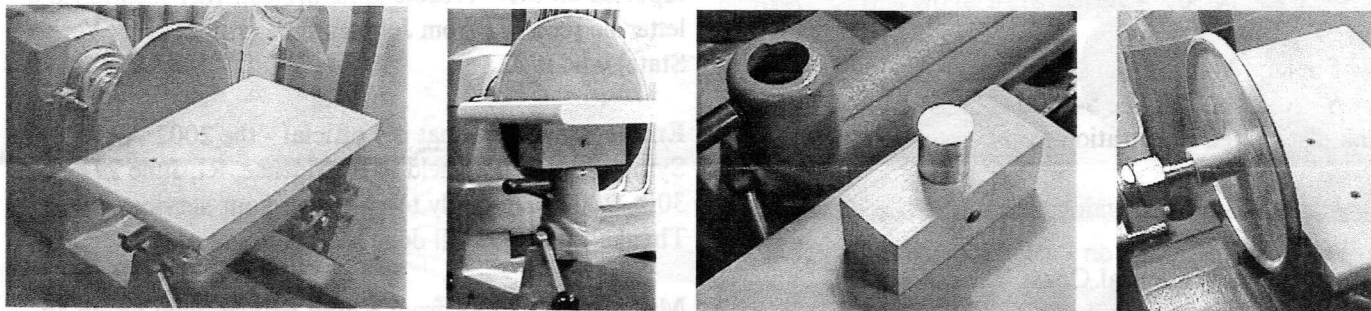
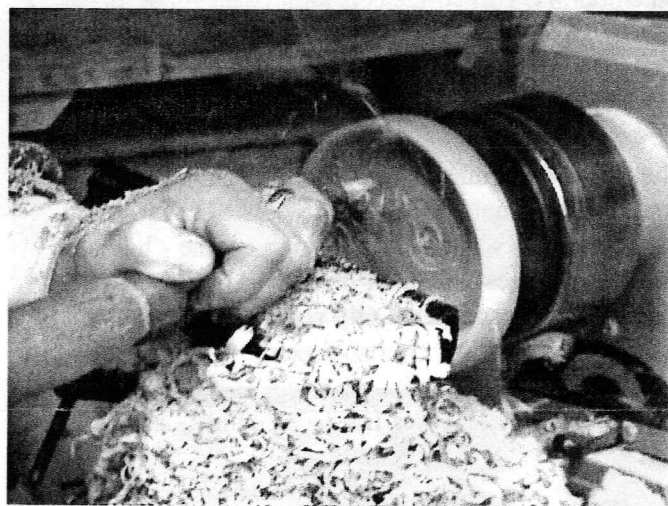

AS THE WOOD TURNS

March 2000

Turn Your Lathe Into a Disk Sander Easily



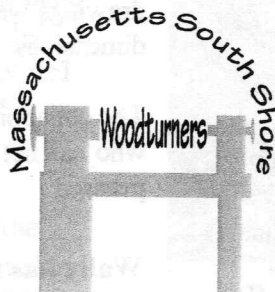
MDF table, low cost, stable. Mounts to toolrest saddle. Block holds rod that fits hole for toolrest. Sanding disk can be purchased or made from MDF. Mount to headstock with taper adapter (Use drawbar) or faceplate.



Roger Hill turning a quickie bowl at February meeting demonstrating how to create a pile of chips in the least amount of time. He also showed a tool bracket that hangs from lathe bed to right - simple but effective.

2000 MSSW Officers

President - Hank Cahill (781) 878-0234
Vice President - Felix Troiano (781) 749-1713
Treasurer - Wally Kemp (781) 871-1390
Secretary - Mal Partridge (781) 843-3883
Librarian - John Murphy (781) 834-1179
Newsletter - Mal Partridge (781) 843-3883



Next Meeting

Tuesday, March 28, 2000
7:00 P.M.

At Hank Cahill's *Dust Bowl*
Refreshments by: Pete Baxter
Member Challenge: Fruits & Vegetables
Demonstration: TBD

Meeting Minutes

The February meeting was called to order at 7:22 at Hank Cahill's Dust Bowl

President's Report

Hank received the following correspondence:

No. River Art Assoc. - Juried Craft Show - May 27-28.

New England Woodturning Symposium, Derry, NH, May 6 - Registration Fee \$40.00 - Registration is limited
Hank distributed registration forms to those interested.

Woodcarvers Supply Catalog

Newsletters from Central Coast Woodturners of California and Surrey Association of Woodturners, North West Surrey, England.

Wood Turning Center, Philadelphia, PA - Challenge VI Exhibition Prospectus - Roots: Insights & Inspirations in Contemporary Turned Objects - Entry deadline for slides and entry form is July 1, 2000. Entry fee \$30.00; \$20.00 for Wood Turning Center members. (join for \$35.00). Entry forms available from Hank.

A list of Woodturning web sites was received from the people who did our cable video. (An MSN search) Editors Note: Try google.com search engine - has cached web pages for quick preview of site - "woodturning" produced 4,649 references in .05 seconds!

Woodcraft Supply classes flyer - recommended by Hank.

Treasurer's Report: Wally Kemp has \$950 in treasury plus some new 2000 dues not deposited. A paid up membership list was given to **Mal**.

Pay your dues to receive newsletter!

Librarian's Report: John Murphy has received the long lost video and it is ready for rental (\$2 per month). A new book recommended by **Mal** has been ordered, Woodturning Methods by Mike Barlow. An excellent, highly recommended book for every woodturner's library. It should be available at March meeting.

New Business

Ernie reported that Beth Ireland will be demonstrating at RI Ocean Turners, North Kingston Free Library, Wickford, RI, March 18th, 10 a.m. to 3:30 p.m. \$15.00 charge includes light lunch.

Ray Cartier is again President of the Cape Cod Woodturners. Mel Scott is Newsletter Editor. Ray reported on their Treadle lathe project. Ray mentioned a letter he received from John Barrett (still in New York State) who is ill.

Emilio announced that it's official - the 2002 AAW Symposium will be held in Providence, RI, June 27-30th, 2002. Get ready to volunteer your services. Thanks for a job well done by **Emilio**, et al.

Mal received a call from Karen Brown, who wrote an article about our group for a local paper, looking for someone to turn an Urn for the ashes of her Golden Retriever who recently died. Her telephone number was given to members attending.

Also **Mal** installed a piece of round foam pipe insulation (with adhesive at the slit) to the lower front of our lathe bed to prevent damage to tools when placed beneath the bed during turning. This pipe insulation has many uses around the shop, covering sharp corners, etc.

Clear plastic cases, round and rectangular, available for \$1.99 each are available at JoAnn's Fabrics stores. **Mal** says they make great display cases for small turnings and other objects de art.

The AAW Chapter Collaborative Project was reviewed by members participating, Parts produced to date were displayed and partly assembled for review by members. The many trials and tribulations encountered by the team members were explained in detail. Decimal equivalent charts were made available by **Mal** as some drawings were produced with three place decimal dimensions. (Just use a wooden micrometer!)

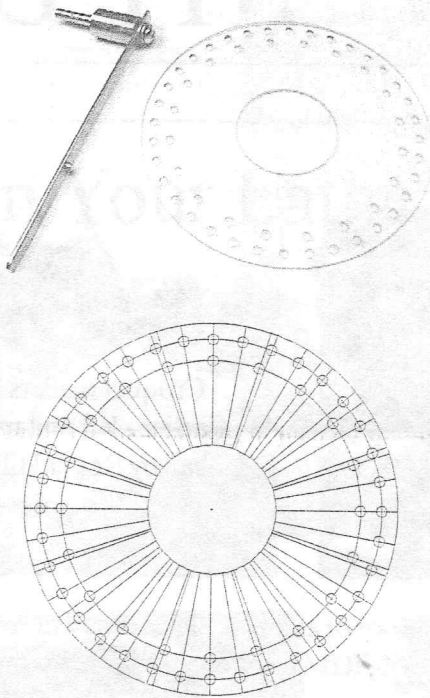
The collaborative project looks great and **Ray Cartier**, who has not been to recent meetings, was quite impressed.

Notice

Wally has more Anchor Seal for sale at \$8.00/gal. Bring your own clean gallon container(s).

Hank is hospitalized with pneumonia - Get well soon, friend

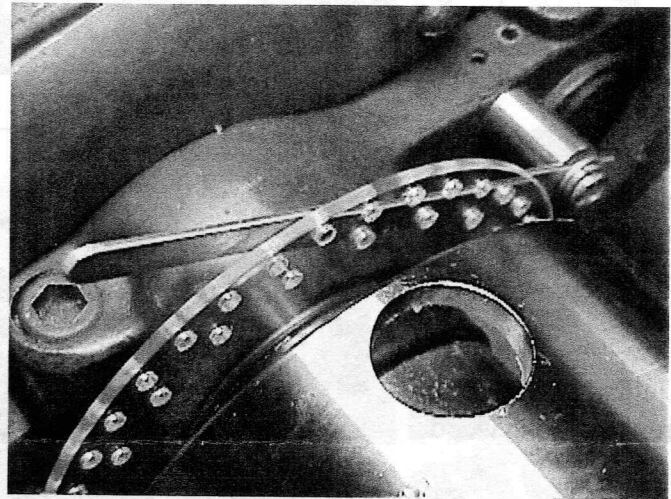
Make an Indexing Fixture for Your Lathe



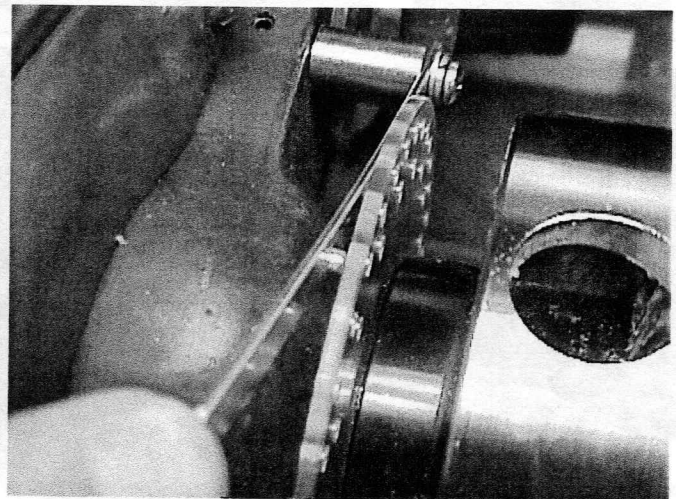
Draw template for number of holes desired (the above example has 36 and 20 holes) using computer or draw double size or larger and reduce on copier to actual size, checking for perfect circles. Hole diameter in center to fit lathe spindle. Disk is fabricated from 1/8" acrylic. Attach drawing to plastic and center punch all holes accurately using a magnifier to locate. Drill holes with 1/8" dia. brad point drill, again using magnifier to make sure drill is centered on pattern hole. By leaving pattern on while drilling you can see if hole is off center easily. The larger the disc the more accurate it will be.

After the index disc is fabricated mount on lathe behind chuck and locate a position on headstock to mount indexing pin and bar. The pin is 1/8" dia. to fit drilled holes and staked into bar (see lower photo). The bar length and position is determined by your lathe headstock configuration. Bar should be parallel to disk when pin is located in index hole. If your lucky, as I was, there will be a hole suited for mounting the bracket to hold the bar in place - see photos.

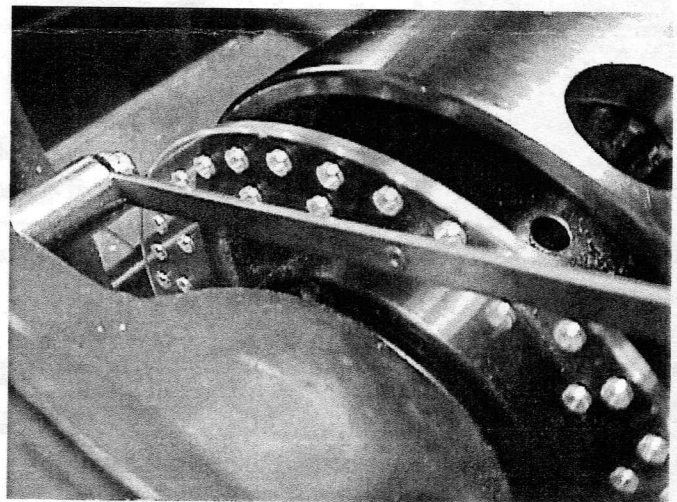
Some lathes come with indexing heads, but if the desired number of divisions is not available - make your own!



Pin in outer series of holes - note mounting bracket



Pull bar back to disengage pin - turn chuck/spindle to next location

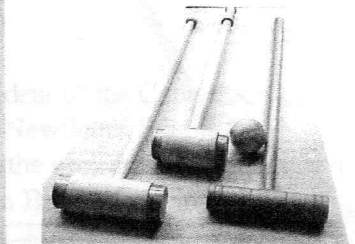
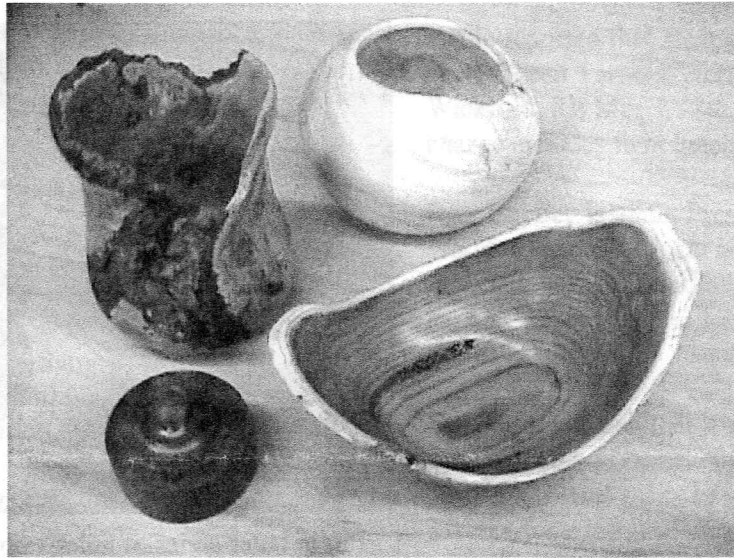


Rear view with pin in inner series of holes

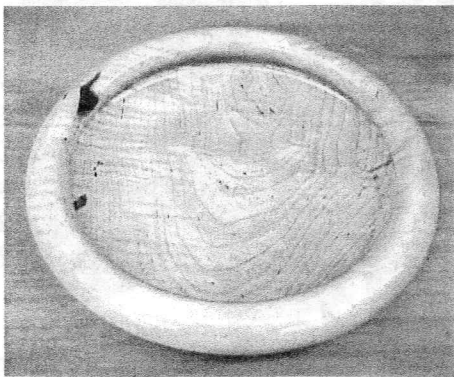
February 2000 Show & Tell



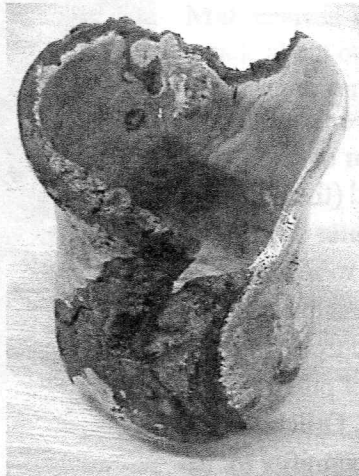
Jeffry Keller's box
from unknown wood



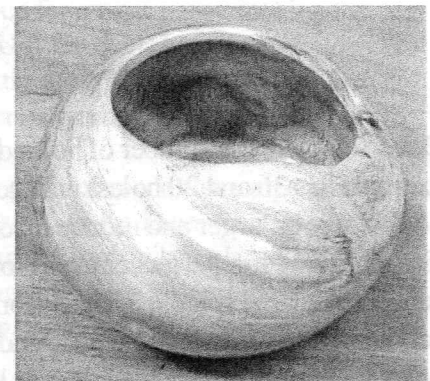
Croquet mallets by Ray
Cartier - left and mallet and
ball by Roger Hill - right



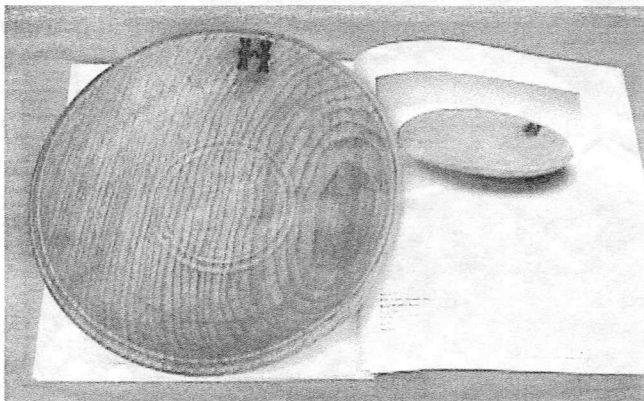
Richard Friberg's maple bowl



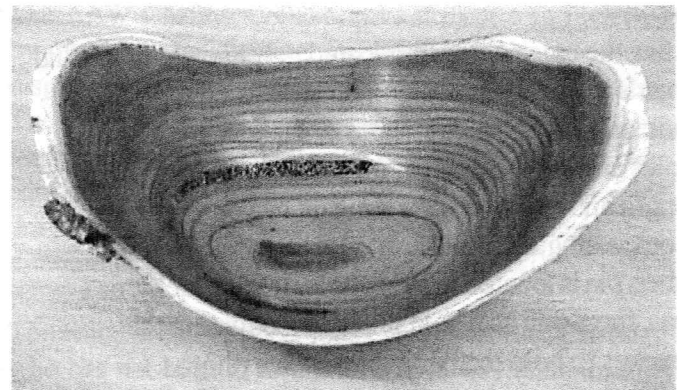
Steve Sarro's cherry burl
(Steve turned another burl?)



Yes, and this is a pine burl by
Steve - note unusual coloring -
not seen in gray scale



Wally showed pole lathe bowl replica turned with
hook tools - original from Mary Rose Shipwreck -
note Henry VIII hot stamp



Wally Kemp's russian olive piece with natural defects
filled with brass filings embedded in black epoxy
How about gold filings (fillings) next time, Wally?