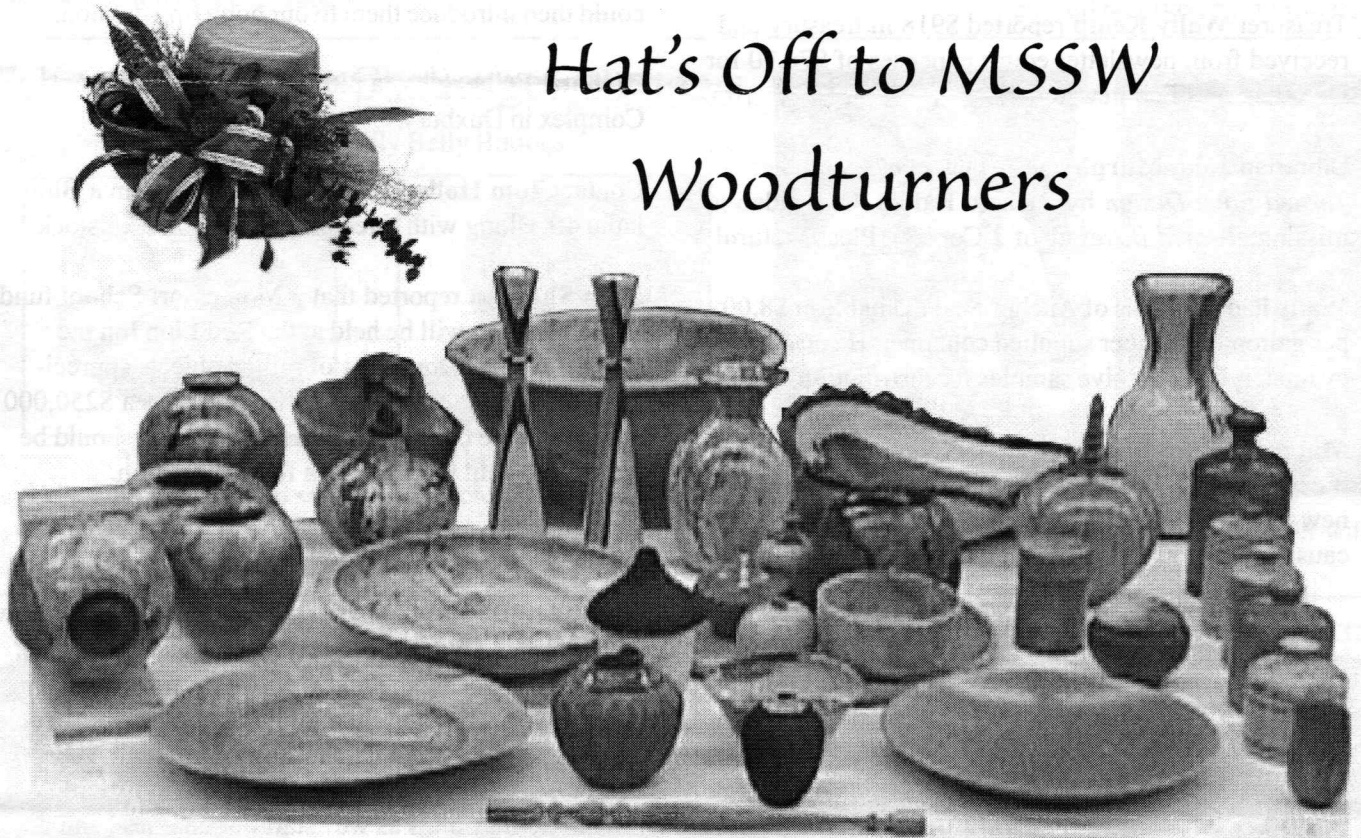

AS THE WOOD TURNS

March 2001

Quality & Quantity

Hat's Off to MSSW
Woodturners



Members outdid themselves with a great Show & Tell display at a well attended and informative February meeting

2001 MSSW Officers

President - Hank Cahill (781) 878-0234
Vice President - Felix Troiano (781) 749-1713
Treasurer - Wally Kemp (781) 871-1390
Secretary - Mal Partridge (781) 843-3883
Librarian - John Murphy (781) 834-1179
Newsletter - Mal Partridge (781) 843-3883



Next Meeting

Tuesday, March 27th, 2001, 7:00 P.M.
At Hank Cahill's *Dust Bowl*
Refreshments by: Felix Troiano
Member Challenge: CD tops - See
American Woodturner, Spring 2001 pg. 36
Demonstration: TBD

Meeting Minutes

The February Meeting was called to order at 7:20pm at Hank Cahill's Dust Bowl

President's Report & General Business

Vice President **Felix Troiano** opened the meeting as Hank had a previous commitment. Guests present were Gordon Fitz, with member Paul Marks, Jeff Gilman with member Al Vandam, and demonstrator Jay Doherty with member Richard Friberg.

Treasurer **Wally Kemp** reported \$918 in treasury and received from newsletter editor expenses of \$74.70 for Dec, Jan, and Feb newsletters.

Librarian **John Murphy** has a new book available: *Turned Bowl Design* by Richard Raffan. One video is missing: *Turned Boxes* (1 of 2 Copies). Please return!

Wally had 5 gallons of Anchor Seal available at \$8.00 per gallon in member supplied container. He also had cyanoacrylate adhesive samples for distribution.

Mal reported that he ran over an aluminum ladder in the middle of the high speed lane of route 128 in his new Passat wagon. It smashed the transmission causing \$10,000 damage! If it had only been wooden.



Mal showed a picture received from The Wood Turning Center, Philadelphia, PA which he has titled "The Royal Flush"! It shows six toilet plungers with decorative turned handles. He also demonstrated a screwdriver with a telescoping insert that with an attached cross member could be used as a depth gage. Idea from Jacques Vesery at his demo using a TV antenna. Also an image of our Gnome Rotary Engine that can be used as wallpaper for your computer is available from Mal.

Roger Hill is displaying five pieces at the South Shore Art Center, Cohasset, MA March 2 to April 15, and also will be doing two hands on demonstrations for and with 5th graders at the Forster School in Hingham on March 5th.. He will be using the club lathe as well as Ernie's treddle lathe which the children can operate to learn about the art and joy of woodturning.

Roger is to be commended for his enthusiasm in showing and teaching these young future woodturners.

Editor's note: As a suggestion for a future meeting each member could bring a young friend or relative and we could then introduce them to our hobby/profession.

Richard Friberg has a piece on display at the Art Complex in Duxbury.

Contact **Tom Holland** if you are interested in a Blount lathe 4ft.+ long with three phase motor in headstock.

John Sheehan reported that a Montessori School fund raising auction will be held at the Red Lion Inn the middle of May. Donations of turned objects appreciated. He reported also that *Aerosmith* gave a \$250,000 donation. One of **Wally's** turned art objects should be worth as much! Contact John for information.

It was great to see **Al Vandam** at the meeting.

A wood raffle was held after the informative chain saw demonstration by **Jay Doherty**. Thanks for joining us, Jay, and answering the many questions presented. The chain saw is as important a tool to woodturners as their skewers and chisels but demands more respect. Your examples of what can happen to human limbs will remain in our minds as we "start our engines" and go after tree limbs! Your suggestions will not end up in limbo.

Editors note: I promise not to use "limb" as much in the future, however I can't say I won't use trunk, bark, rot, or crotch as a play on words. It's a rotten trick, but I can't be spalted for trying.

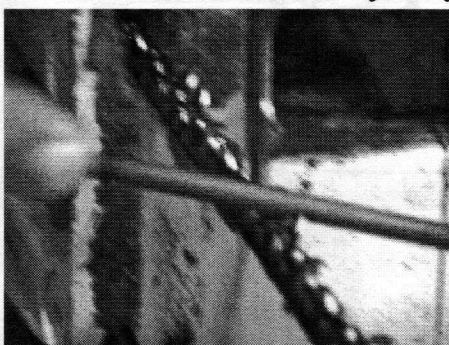
It was a great meeting, well attended and with a large number of excellent show and tell pieces and an informative chainsaw demonstration.

Most members have paid their dues.
Wally looks forward to 100% compliance!

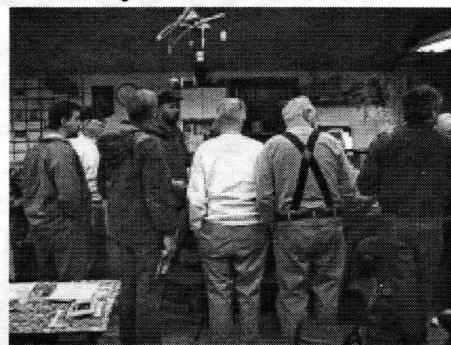
Chain Saw Demonstration by Jay Doherty



Jay explains basic chain saw operation and safety. He wears chaps for leg protection as we all should.



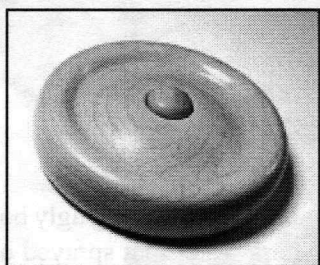
Detailed sharpening was explained and demonstrated



A question from a member *turns* heads. As can be seen, Jay's demo was well received by members.

February Member Challenge - Button/s

Mal's Maple Family Belly Buttons



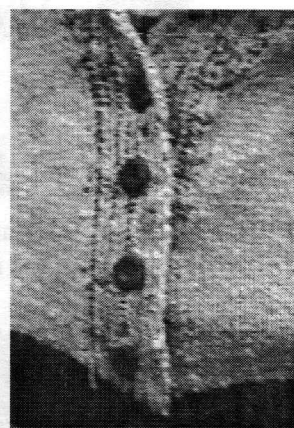
The Outie
(I'd go out on a limb to say Mrs. Maple is pregnant!)



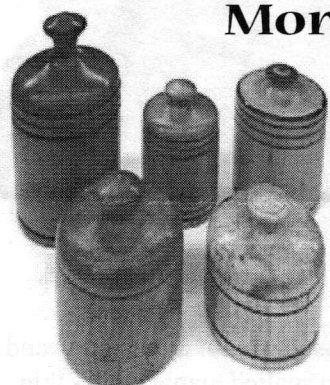
The Innie with Lint
(collected over short period)



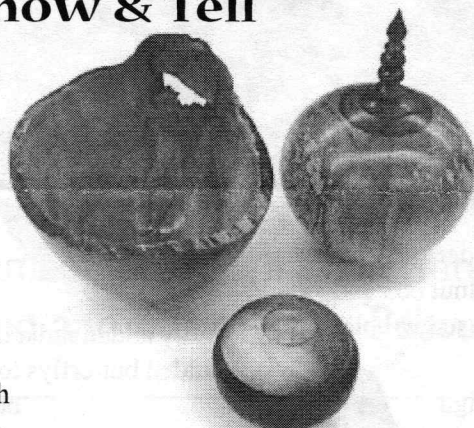
Wally proudly displays his homemade sweater with turned wooden buttons



More Show & Tell



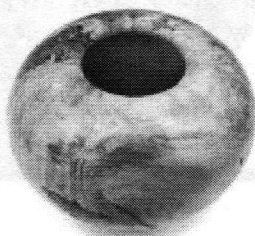
Jesse's Cherry & Maple Boxes with Hut finish & burned strips



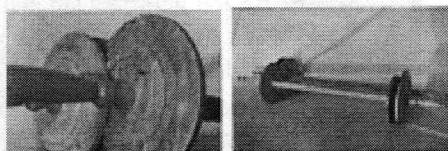
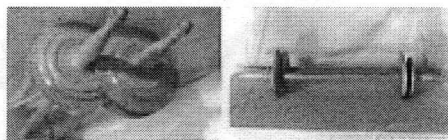
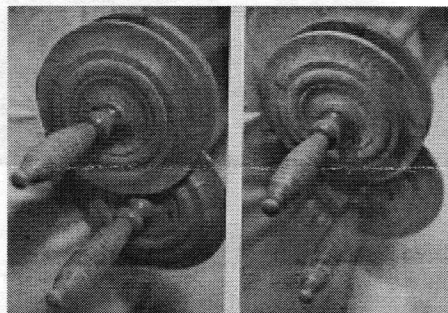
Bernie's spalted maple bowl - small box is mahogany & pear - nice pieces



Roger's Maple burl with lacquer finish to be displayed at South Shore Art Center



Parchment Scroll Holders



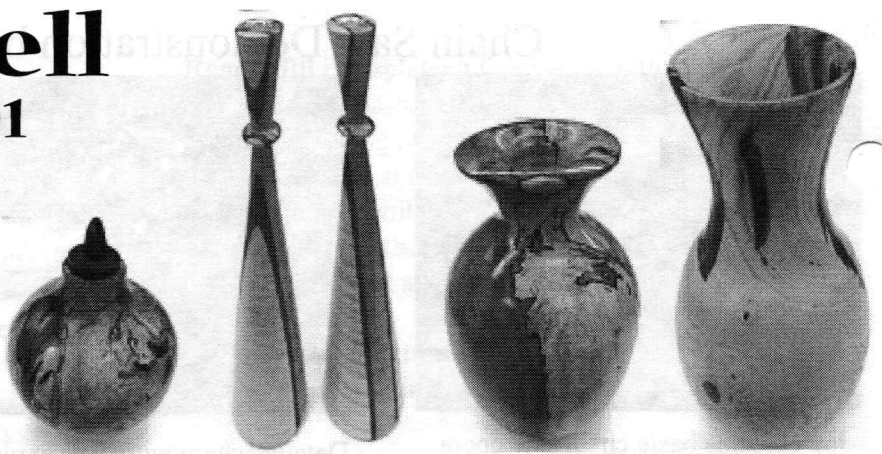
Paul Marks showed pictures and described how he made scroll holders from tiger maple - Sent to Isreal

Show & Tell

February 2001



Vicki Iannuccillo's floral decorations on Emilio's turned wood hat won blue ribbons at R.I. flower show



John's purpleheart and maple candlesticks and spalted maple pieces
Hole in large piece filled with inlax



Spalted woodpecker birdhouse by Wally

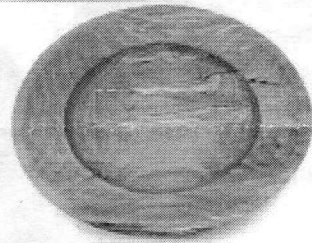
John's "BUB" big ugly bowl
Less water that sprayed out!



Lenny used peacock blue water based powder stain on Rhododendron root, dog bone for top on walnut box and added decoration to plate to mask faceplate screw holes



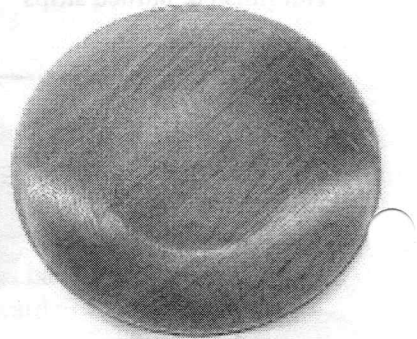
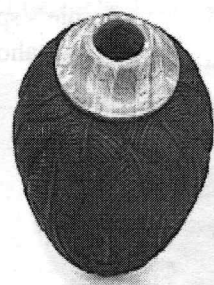
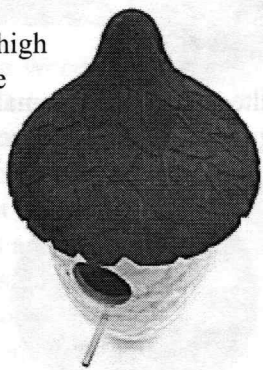
Emilio's experiment in adding coloring into grain with limited success



Wally added india ink cracks to walnut crotch bowl and added butterflies to crack in spalted maple bowl - thin beech plate warped



The rent will be high for this house



Richard's pieces show his talent for turning, carving, and design. The plate is quarter sawn oak