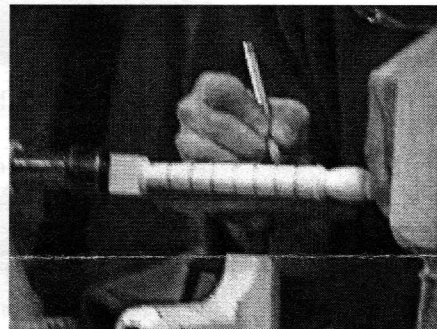
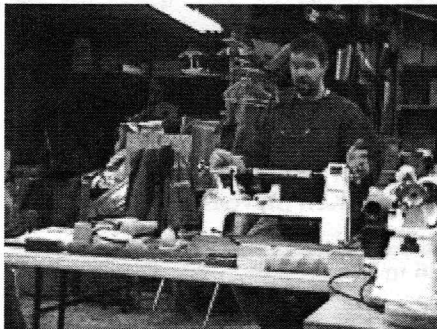
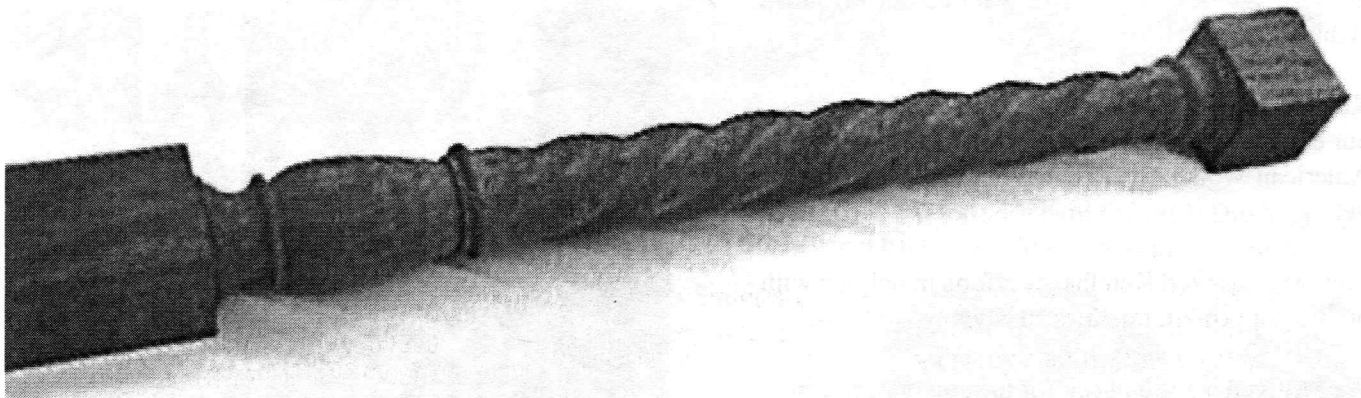

AS THE WOOD TURNS

March 2006

Doing the Barley Twist



Richard Friberg showed us how to do the barley twist - not the dance- but in wood. First layout a right or left twist on the stock by connecting the corners of drawn blocks. File, chisel, curse, sand until desired effect is created.

2006 MSSW Officers

President - Hank Cahill (781) 878-0234

Vice President - Richard Friberg (508) 378-2436

Treasurer - Wally Kemp (781) 871-1390

Secretary - Mal Partridge (781) 843-3883

Librarian - Leonard Mandeville (508-586-7679)

Newsletter - Mal Partridge (781) 843-3883

Web site: <http://www.mssw.sitelinker.org/>



Next Meeting

Tuesday, March 28th, 2006, 7:00 P.M.

At Hank Cahill's *Dust Bowl*

Refreshments by: Philip Todd

Member Challenge: Finial

Demonstration: TBD

Meeting Minutes

The meeting was called to order at 7:00 pm at Hank Cahill's Dust Bowl

President's Report and General Business

Guests present: Med Hornecker, Ron Flynn, Ralph Hadlock and Paul O'Neil. Med, Ron and Paul have become members.

Hank received the CNEW newsletter and a letter from AAW requesting Chapter members turn Christmas Ornaments for Kosair Children's Hospital in Louisville. Bring them to symposium or check with Hank for address if you want to send them.

The Abington Mariner had a great article "One good turn deserves another" which featured our President, Hank Cahill.

Ken Lindgren has submitted a draft of an article about our exhibit at Fuller Craft Museum to Carl Vose, editor American Woodturner. He has not heard from him as yet.

Members thanked Ken for his efforts in helping with our Fuller Exhibit, Lectures, and demonstrations.

We received a \$350 check for turning classes conducted at Fuller Craft Museum.

[SENSE]ation day at Fuller was a big hit with the kids as our 100 tops for coloring were gone in the first hour. Ken, Dick Vose and Mike Veno were kept turning to meet the demand!

An article in the Patriot Ledger "Cohasset exhibit explores the creative process" featured the work of Ken Lindgren who suggested a process show to the South Shore Art Center.

Two of our Jet mini lathes are being repaired. One had a defective switch and the other a motor failure. It was agreed that Wally will purchase another Jet mini lathe. Bob Allen repaired a chuck and will return it for use.

Ken reported on his first turning accident. He was turning tops at 2000 rpm with a big chuck mounted and when he stopped the lathe the chuck, which was not on tight, kept going. Ken grabbed it to prevent it from flying into outer space and received a cut finger. No damage was done to the chuck.

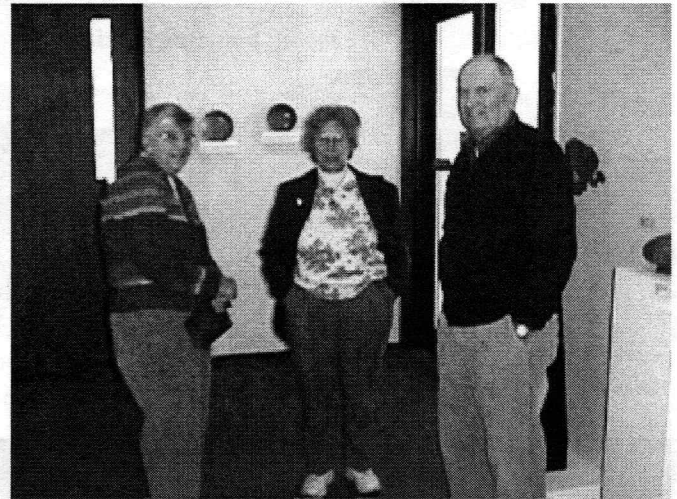
The North River Art Society will be holding a Juried Art Show May 27-28. \$20 fee, booth to exhibit \$200.

A possible Exhibit and Demo at the East Bridgewater Library is pending for June or July.

Members were welcomed to a reception at Fuller Craft Museum on February 12th.

Hank was given a marked up copy of changes to our AAW Chapter listing to bring it up to date.

Mal reported that Rude Osolnik's daughter, Maureen, was very interested in our Fuller Exhibit and was given color pictures of our AAW Collaborative Gnome Engine and Rhode Island Capitol Dome.



Maureen between Jesse and Mrs. Meyer

Wally's Duxbury demo went well with over 50 in attendance. Bob Allen and Ken Stevens helped out.

Wally reported \$1526 in treasury and gave a summary of 2005 income and expenses.

More Liberty Tree wood was made available and Hand's On Saturday was set for March 18th.

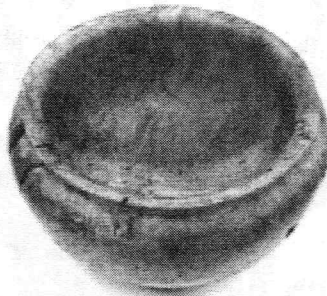
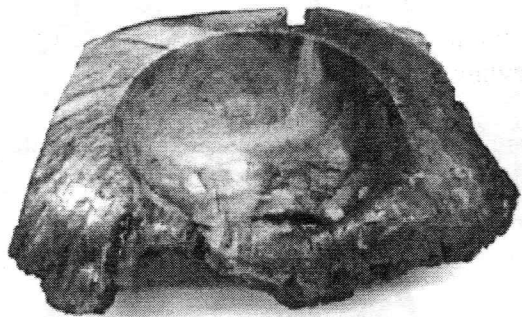
Wally will have 5 gallons of Anchor Seal available at March meeting in your container for \$11/gal.

Need a new tool rest for Jet Lathes - check with Nigel.

Lathe for Sale: See Med Hornecker

Wally says: Dues are Due for 2006

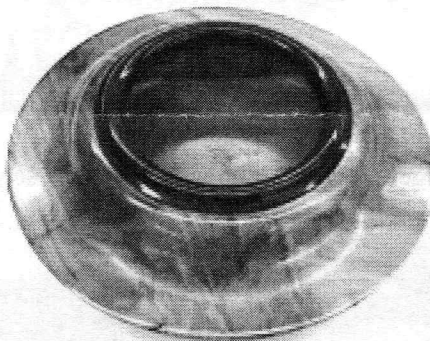
More Show & Tell



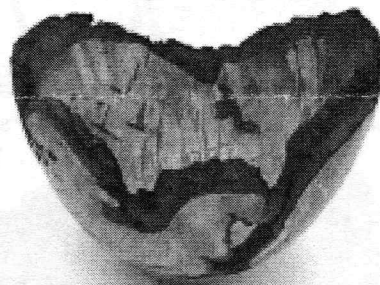
Hank's Maple burl square piece and Cherry burl pieces



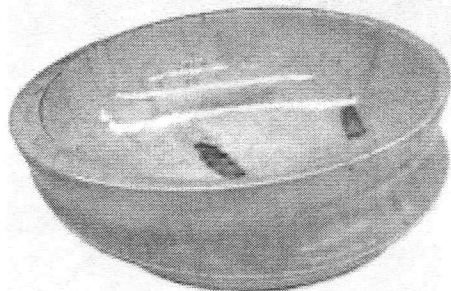
Ron Robertson's Cherry burl bowl



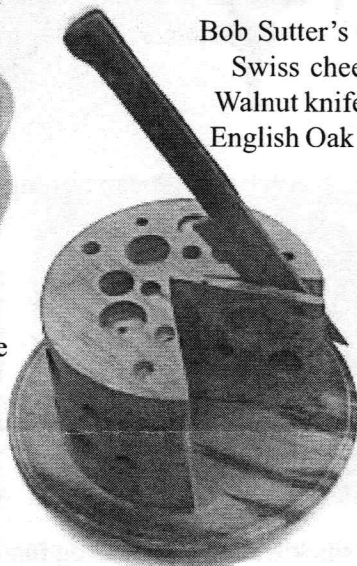
Jeff's piece with Bloodwood trim



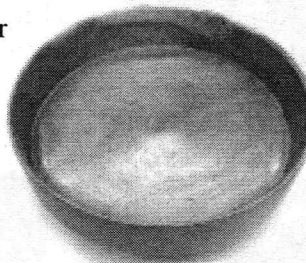
Richard Friberg's Duxbury Maple burl turned green



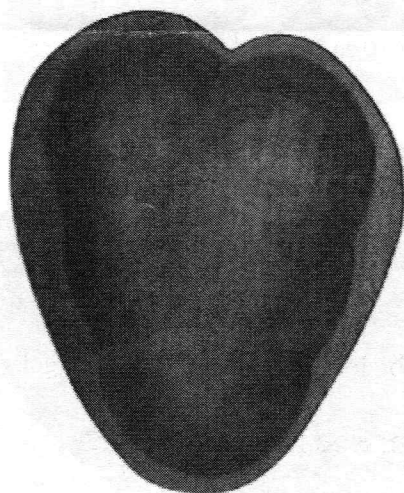
Ken's multi axis bowl using face plate



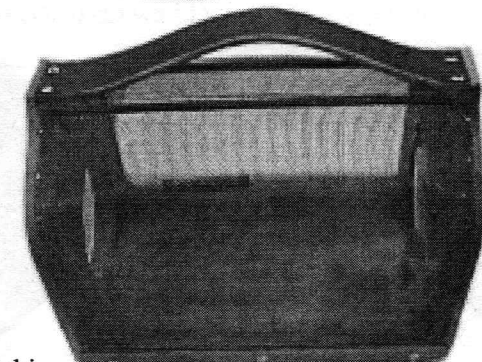
Bob Sutter's Cedar Swiss cheese, Walnut knife and English Oak plate



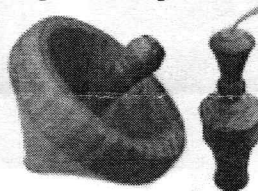
Ben Natale's Beech bowl and spalted Maple weed pot



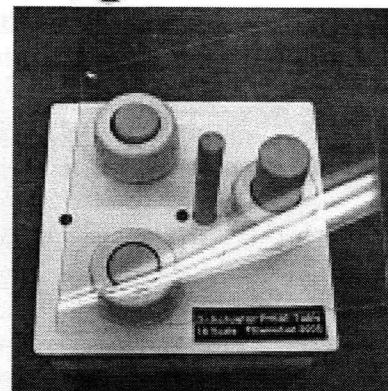
Emilio's multi center (4) turning for Vicki



Mike veno's bug box for son.
End openings turned



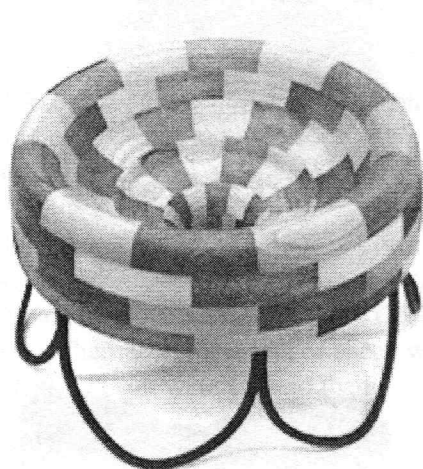
Med Hornecker's pieces



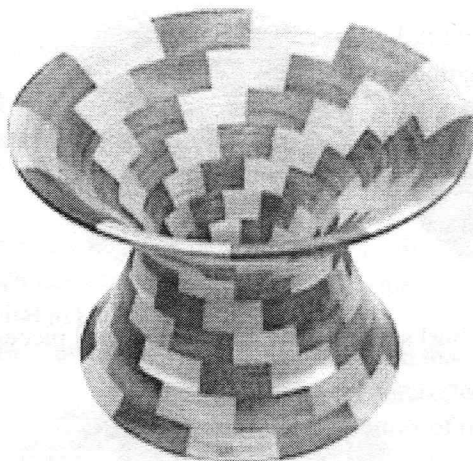
Don Diedrich's proof table for flight simulator platform using air bellows

Show & Tell

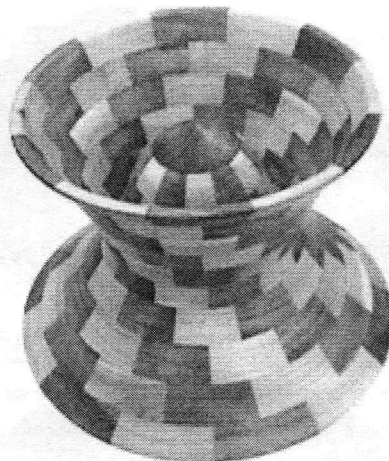
February 2006



Mexican hat shape on temporary stand



Deep throat

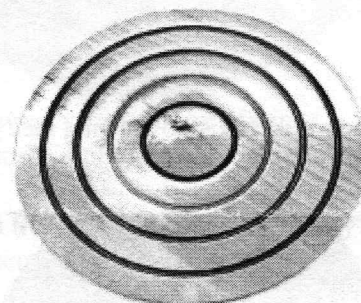
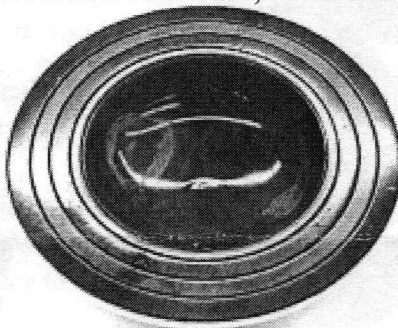
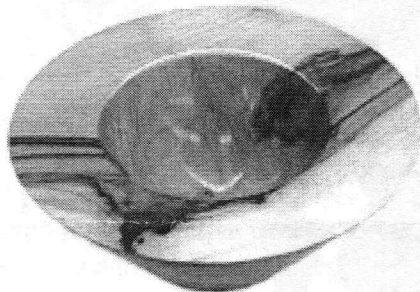
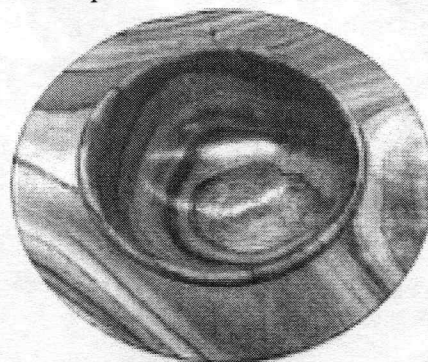


Bottom view

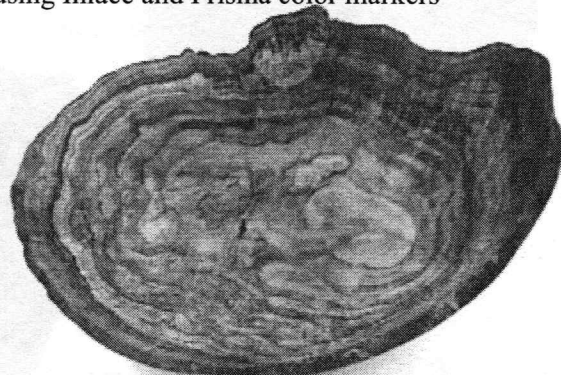
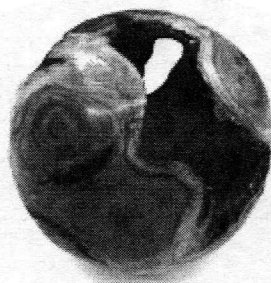
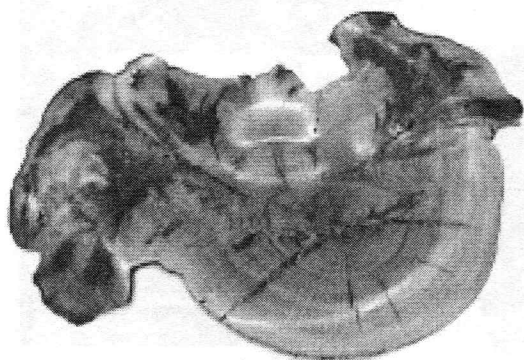
Nigel Howe's Mahogany & Poplar segmented pieces.



Lenny Langvin's Spalted Maple piece decorated with beads, Pecan turning with legs and thick walled bowl



Andy Osborne's Silver Maple decorated thick walled pieces using Inlace and Prisma color markers



Wally's large thin walled pieces from Oak burls and round piece from Yew root