
AS THE WOOD TURNS

March 2008 Issue 129

When a Compote Has Little Compotes:



Ron Robertson's Maple Member Challenge Compote has adopted little Cherry Burl Compotes the original one made by Leonard Langevin and the other siblings made by copy and paste!
A compote-sision could be written about this miracle, but that's for another time.

2008 MSSW Officers

President - Hank Cahill (781) 878-0234
Vice President - Richard Friberg (508) 378-2436
Treasurer - Wally Kemp (781) 871-1390
Secretary - Mal Partridge (781) 843-3883
Librarian - Leonard Mandeville (508-586-7679)
Newsletter - Mal Partridge (781) 843-3883
Web site: <http://www.mssw.sitelinker.org/>



Next Meeting

Tuesday, March 25, 2007, 7:00 P.M.
At Hank Cahill's *Dust Bowl*
Refreshments by: Jim Flannery
Member Challenge: Turned bird house or
a wall hanging turned item for display
Demonstration: TBD

Meeting Minutes

The meeting was called to order at 7:00 pm at Hank Cahill's Dust Bowl

President's Report and General Business

Hank reported on correspondence received. The CNEW newsletter was made available for member review.

Mal reminded members that 2008 membership dues are due and Wally reported \$1935 in treasury plus dues paid at meeting.

Mal also distributed the binder with articles of interest to woodturners which included articles suggested by Ron Robertson on drying and ebonizing wood. Also information on fabricating wooden clocks.

Members were asked to make bird houses for the Habitat for Humanity auction at the South Shore Plaza in April.

Nigel will hold a Summer Hand's On Party on Saturday July 12th at 10am.

Wally reported that the South Shore Science Center is interested in a display of woodturnings. They will be hung on a wall so must be designed to do so. Perhaps in a frame or could be photographs of turnings in frames.

The Norwell library would like us to exhibit again.

A report on the woodturning exhibit at Fuller Craft Museum was given. No pictures were to be taken but a book of photographs of the pieces was available for purchase.

AAW President Angelo Iafrate talked about the AAW Symposium to be held this year in Richmand, Virginia. He suggested reserving hotel rooms early as this will be bigger than last years Symposium at Louisville. The AAW web site will have a members only Link. He also talked about the EOG grant money available to member turners. AAW will celebrate it's 25th anniversery in 2011. Jean LeGwin is writing a book about AAW which with 13,500 members is the largest woodturning organization in the world.

Hand's On will (was) be held on March 15th at Hank's shop at 10am.

Woodturner's Flea Market Notice

Members who bring items to **sell, swap or give away** should add their name and price or details to the items so you can be contacted to close a deal..

Richard Friberg demonstrated Cut Not Scrape Spindle Turning

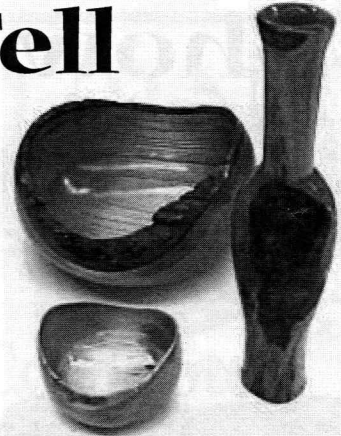
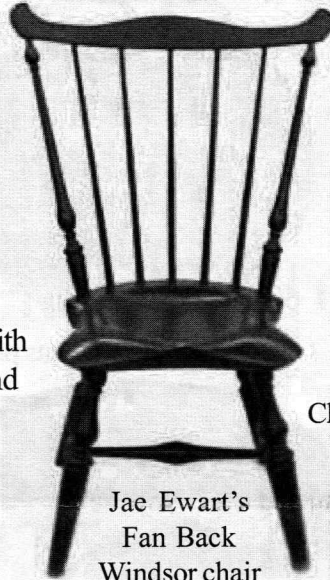
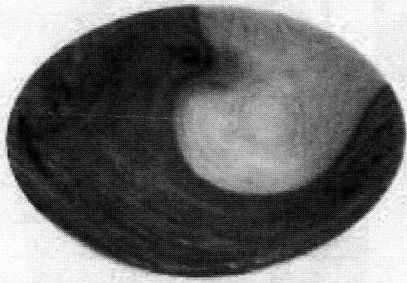


Mike Wells watches as Rich demonstrates



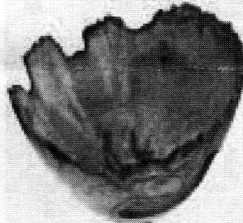
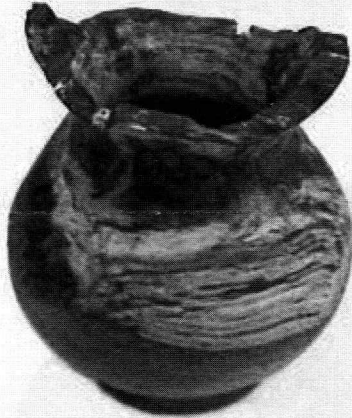
Jim Flannery gives it a try

More Show & Tell

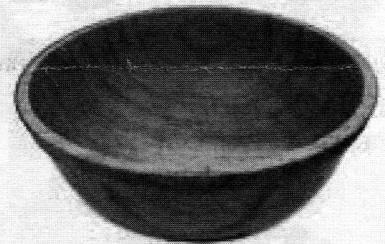


Andy's Apple turning with 30ft. of copper wire and torched rim

Ben Natale's Autumn Olive, Cherry burl and light wood pieces

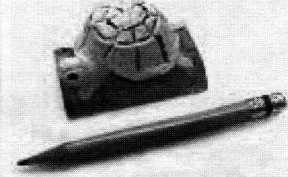
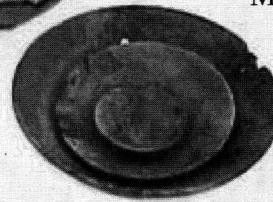
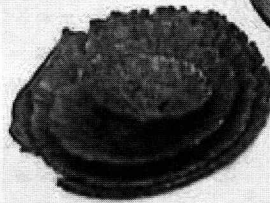
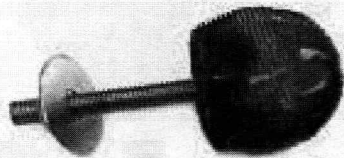


Jae Ewart's Fan Back Windsor chair



Bob Trucchi's mystery wood bowl and Oak Burl vase

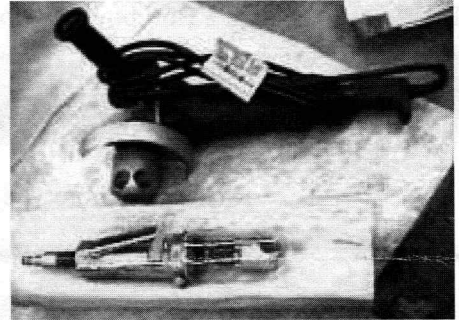
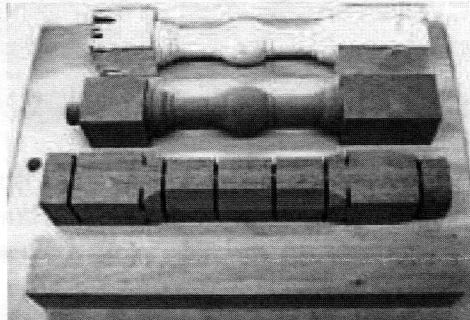
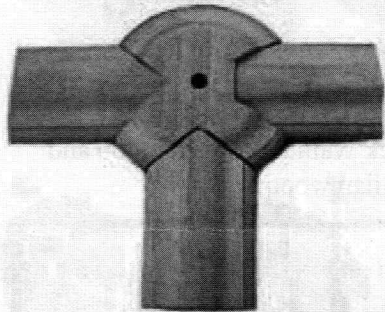
Mystery bowl - who turned it?



Ron Robertson's ball sander tool

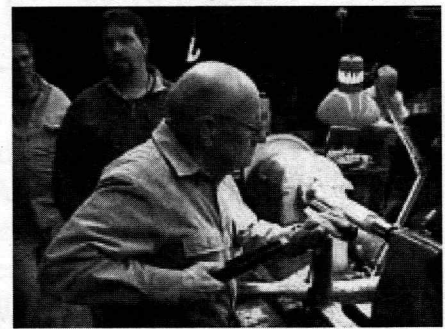
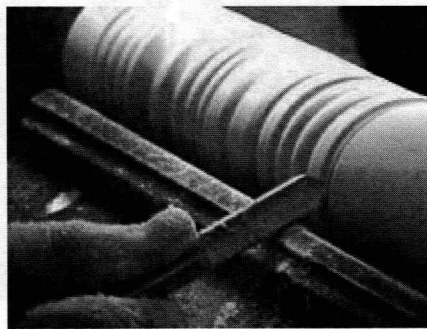
Angelo's nested Elm and Cherry Burl pieces

Hank's turtle carving



Mike Veno's railing to newel post sample and sample board

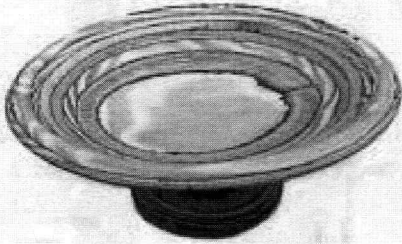
Jim Denker's new two cutter head tools for removing lots of wood fast!



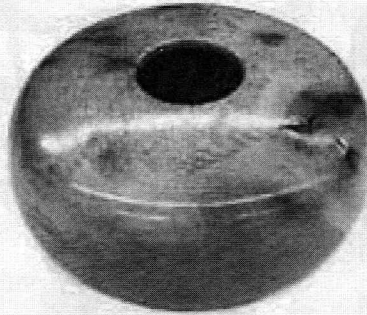
Sidney Katz also stepped up to practice cutting not scraping as Richard had demonstrated

Show & Tell

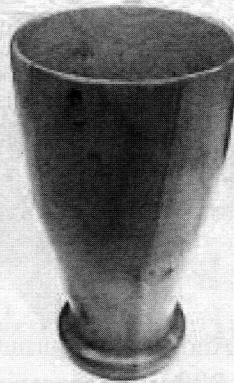
February 2008



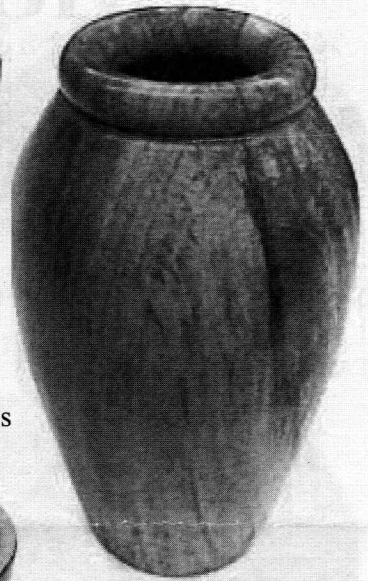
Ian's Microlam bowl



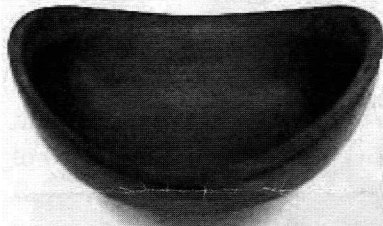
Lenny's Yellow Locus piece



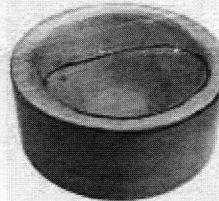
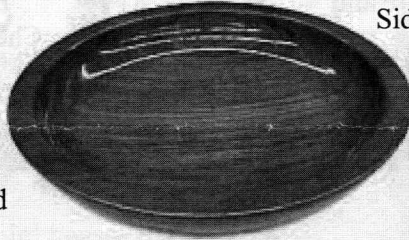
Sid's Maple Beer Glass



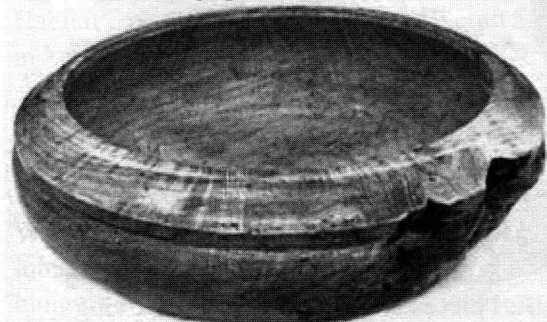
Wally's Grapefruit Vase



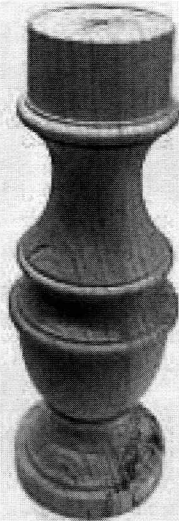
Paul O'Neill's Walnut bowl and
Bubinga piece



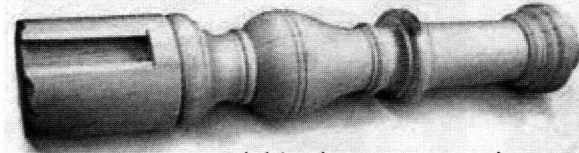
David Rice's
Maple Art Deco
Dog Bowl



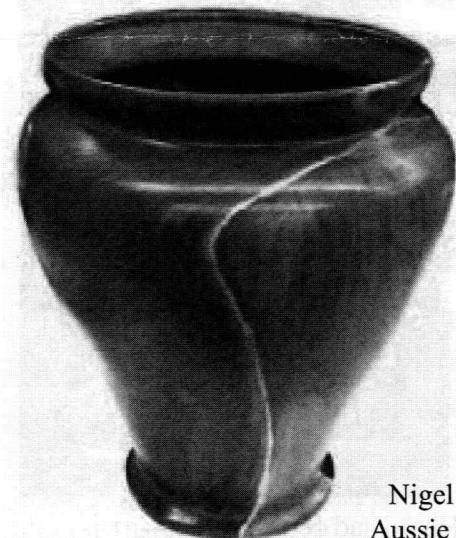
Richard Friberg's Ash Burl bowl gift for Nurses



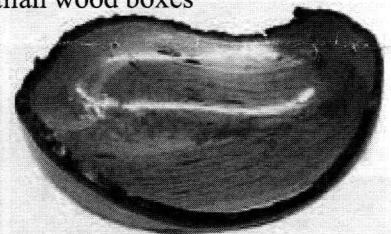
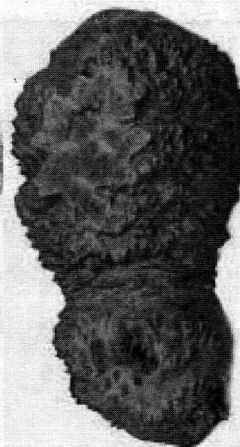
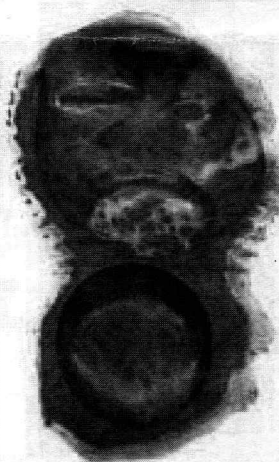
Rich's pine prototype pieces



Mike Wells's Black Walnut bowl, Bamboo and
Hawaiian wood boxes



Nigel's large Walnut Crotch vase and
Aussie Burl, top and bottom view, turned
with sandwich chuck on 5 centers



Jeff's Cherry crotch bowl, pen and
box from Amboyna wood

