

---

# AS THE WOOD TURNS

---

March 2009 Issue 141

---

## In These Hard Times

If you don't have a pot - Bob Sutter will turn you one



Bob Sutter's TeaPot turned from Butternut with English Oak top and Walnut handle.

### 2009 MSSW Officers

**President** - Hank Cahill (781) 878-0234  
**Vice President** - Richard Friberg (508) 378-2436  
**Treasurer** - Wally Kemp (781) 871-1390  
**Secretary** - Mal Partridge (781) 843-3883  
**Librarian** - Ron Robertson (781-545-8295)  
**Newsletter** - Mal Partridge (781) 843-3883  
**Web site:** <http://msswt.org/> or <http://www.msswt.org/>



### Next Meeting

Tuesday, March 24, 2009, 7:00 P.M.  
At Hank Cahill's *Dust Bowl*  
Refreshments by: Nigel Howe  
Member Challenge: Off Center Toy Car  
See Our Web Site for details  
Demonstration: TBD

## Meeting Minutes

The meeting was called to order at 7:00 pm at Hank Cahill's Dust Bowl

### President's Report and General Business

Jesse Meyer introduced guest Karl Meyer, Kettle Grove Sawmill & Woodworking, from Prince Edward Island.

Hank reported receiving correspondence from:

The Sixth New England Woodturning Symposium at Pinkerton Academy, Derry, NH, May 23, 2009.

Totally Turning,, Sarasota, NY, March 28,29, 2009

North River Art Society Juried Show, May 23, 24, 2009

Newsletters from Surrey, England and CNEW, and AAW membership forms.

Mal reminded members that dues for 2009 are due and had membership cards available for paid up members.

An E-Mail was received from Ken that reported we are formally accepted for this years Cohasset Art Festival, June 19,20 and 21.

Many members signed up to supply refreshments for the coming months.

Mal's binder with articles of interest to woodturners was available for review by members.

Wally reported \$1166 dollars in treasury. He had Anchor Seal available for \$15/gal. Bring a jug.

He also reported that at NBSS on thursday March 12th. 6-8 PM, Alan Lacer would be giving a free lecture on the Skew, and on May 15th a Sam Maloof lecture would be held at 5pm. The Fuller Craft Museum in Brockton will have an exhibit "Craft in America".

Bob Sutter mentioned that George Nakashima's daughter would be giving a lecture at Fuller.

Ron the Librarian reported that 2 new DVD's and 2 new books have been added to the library. He is looking for new ideas for Library. Check on our web site forum. Report on a library video for our web site and get one free rental.

Webmaster Bob Trucchi requested that officer bios be supplied by the end of March. If you have any ideas for the site, contact him. Articles on safety would be appreciated.

Member Challenge Committee of One, Chairman Bernie Feinerman suggested that members who turn challenges get first shot at raffle wood.

Wally then mentioned that there has been a lack of wood recently.

Bill Dooley reported on our exhibits at Norwell and Hanover Libraries. They will be in glass cases and run from March first to June first. Sales allowed. (Mal has sent information on making tent cards to Bill. Contact Mal if you want that info also)

Hank suggested a collaborative event with the New England Woodcarvers to be held at Massachusetts Community College in October.

Nigel had a free can of lacquer available and also information on the Superior Tool Co. Hollowing Tool.

Hand's On at Hanks was scheduled for Saturday, March 14th at 10 am. And don't forget our demonstration by Christian Burchard - lets have a great turnout!

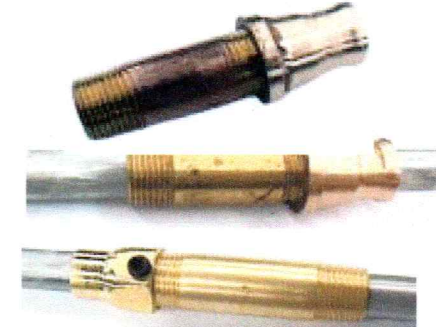
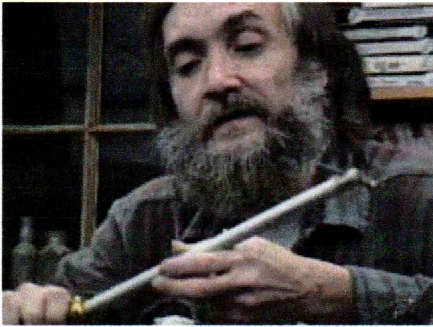
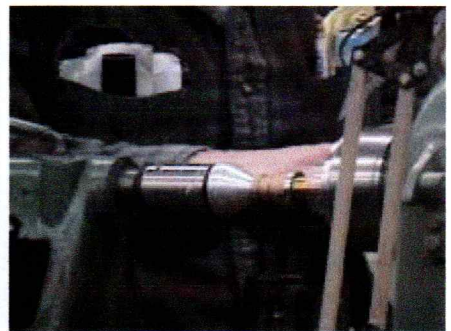
### Demonstration by Christian Burchard

When: **Saturday, March 21, 2009 10:00am**  
Where: Hank's Dust Bowl  
Washington St  
Abington, MA  
What: A day with Christian Burchard  
Members: \$15.00  
Public: \$20.00  
Lunch: Brown Bag

### Welcome New Members

Jenny White from Somerville  
Ed Hinspeter from Weymouth

# Ian's Demonstration - Get a Handle On It!

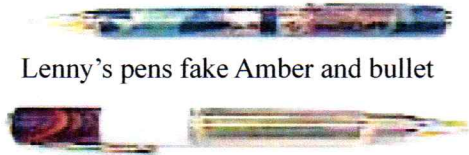


Ian demonstrated how to make a tool handle coupling from - you guessed it - plumbing couplings

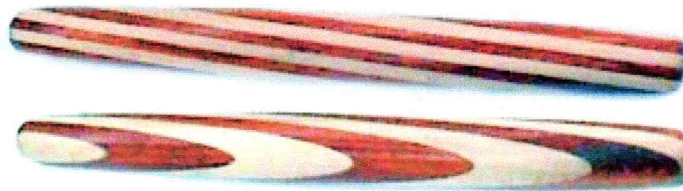
## More Show & Tell



Ian turned 150 candle cups for a wedding



Lenny's pens fake Amber and bullet



Two views of Ian's Maple and Padauk segmented rolling pin



Mystery pieces from February meeting by Philip Connolly



Rich Friberg's Ash burl bowl and Shalaly stick for son



Emilio's Cherry ladle and salt spoon



Lenny's 1" to 1ft. small stool



# Show & Tell

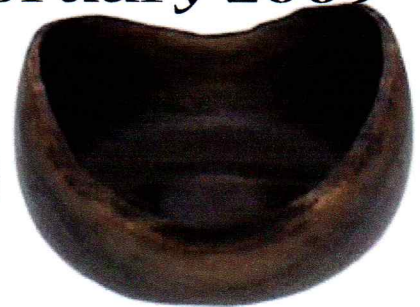
February 2009



Charlie Rosen's Walnut bowl



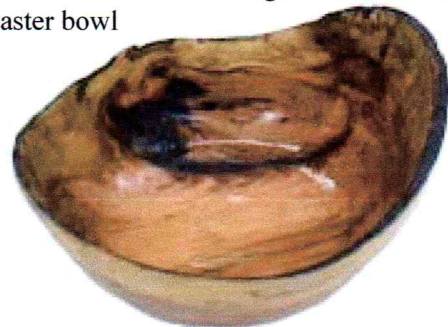
Jeff's Colorado Alabaster bowl



Nigel's Walnut bowl



Paul O'Neill's large Locust bowl



Bill Dooley's spalted Cherry crotch bowl and Oak bowl in a board



Andy's spalted Oak piece, and Cherry vases



Ben's spalted Holly bowl, American Elm bowl. Cherry box with insert and Oak with feather piece

