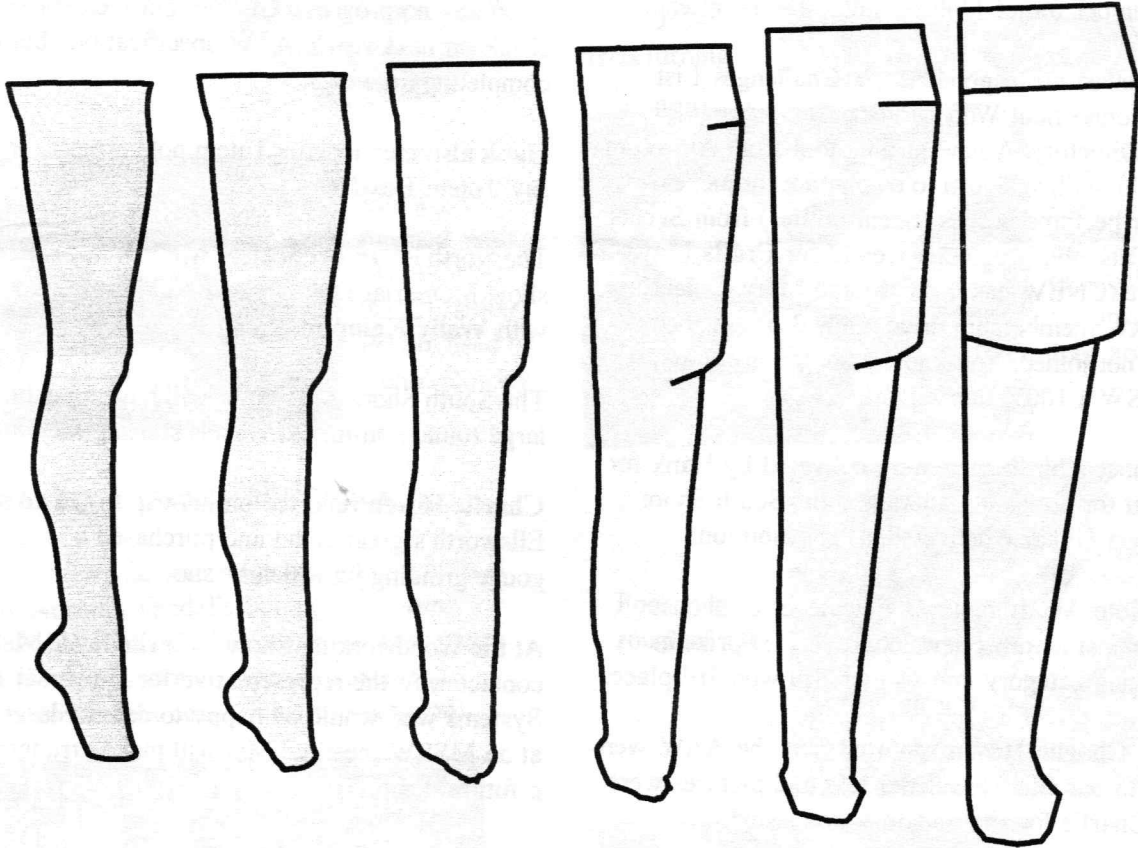


AS THE WOOD TURNS

May 1999



How The Turned Cabriole Leg Evolved

Member Jesse Myer demonstrated how to layout and turn cabriole legs at our April meeting. He is a professional turner and has been turning furniture components for Eldred Wheeler Co. (a producer of Queen Anne furniture) of Hingham for many years. His presentation was informative and gave us all an incentive to become proficient at turning between centers.

1999 MSSW Officers

President - Hank Cahill (781) 878-0234
Vice President - Felix Troiano (781) 749-1713
Treasurer - Wally Kemp (781) 871-1390
Secretary - Charles Rosen (781) 848-6589
Librarian - John Murphy (781) 834-1179
Newsletter - Mal Partridge (781) 843-3883



Next Meeting

Tuesday, May 25th, 1999
 7:00 P.M.

At Hank Cahill's *Dust Bowl*
 Refreshments by: **Felix Troiano**
 Member Challenge Project: **Goblet**
 Demonstration: TBD

Meeting Minutes

The April meeting was called to order at 7:05 at Hank Cahill's Dust Bowl

President's Report

Guest **John DeFreitas** from Pembroke was introduced. Member **Janet Collins** suggested he attend.

Hank reviewed correspondence; a Challenges List from the Connecticut Woodturners, The AAW 1999 Resource Directory, A new turning tool from American Windsor Co. with side arm to counteract torque, a request for perfume bottles (Scent bottles) from Scents & NonScents '99, Worcester Center for Crafts May Craft Faire (CNEW has a booth) and Mary Lancer's annual AAW membership drive. Only 3 of our members have not joined. You know who you are! Let's make MSSW a 100% participant.

Four member's birdhouses were delivered by Hank for the Habitat for Humanity auction at the South Shore Plaza. Roger Hill also delivered his contribution.

Editor's Note: **Wally Kemp's** Flycatcher birdhouse featured in last month's newsletter won 1st prize in woodworking category and **Roger Hill** won 3rd place.

Secretary **Charlie Rosen** reported that the AAW web site links to our site. Newsletter text and pictures were given to Charlie for site update as requested.

Treasurer **Wally Kemp** reported \$935 in treasury after expenses; \$100 Gift Certificate to Tom Kamila as a thankyou for his excellent presentation, \$247 for MSSW lathe chuck, \$125 for Newsletter printing and postage, and \$15 for Audubon Farm Day fee.

Librarian **John Murphy** reported 3 items out over two months; Charlie Rosen 2 books and Jeff Keller 1 video. **Mal** obtained two autographed books by Keith Rowley, *Woodturning: A Foundation Course* and *Keith Rowley's Woodturning Projects* which have been purchased for our library.

Old & New Business

As Gary Levine is no longer a member, **Mal** motioned that a new Vice President be nominated. Member **Felix Troiano** volunteered and was elected.

Paul Marks reported that Chris Stott would be available on Memorial day or the 4th of July, dates not acceptable to membership for obvious reasons.

Al Stirt is being contacted for fall meeting demo and Jack Vesery from Maine may be available per **Hank**.

AAW Challenge projects - Cinderella's Pumpkin carriage - no progress, Gnome rotary engine - **Mal** will check on next year's AAW specifications before completing drawings.

Hank also mentioned a Totem pole project, or did he say Totem **Bowl**?

The North River Art Society will hold it's juried art show Memorial Day weekend again this year. Check with **Wally Kemp** for details.

The South Shore Art Center will have an exhibit of large round non-turned vessels starting the 4th of May.

Charlie Rosen reported on his trip to CT to see David Ellsworth's great demo and purchased a video and gouge grinding jig which he showed us.

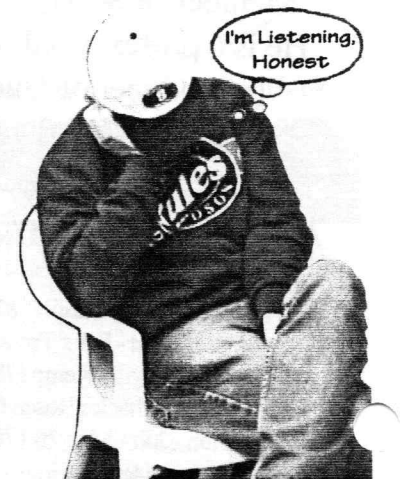
At the Woodworking Show in Springfield, **Mal** made contact with the representative for Universal Laser Systems who would be happy to demo a laser machine at an MSSW meeting. Mal will make arrangements for a future demo.

Mal showed a SEARS Automatic Power Switch that operates 2 other powered units when the main machine is started and stopped, a vacuum and lamp for example. This feature can be turned off. Price <\$20.

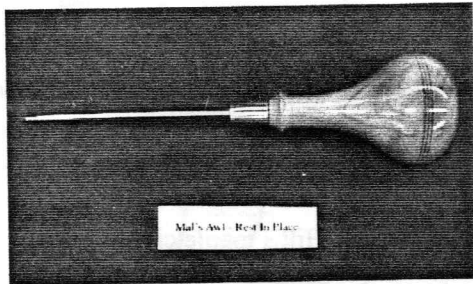
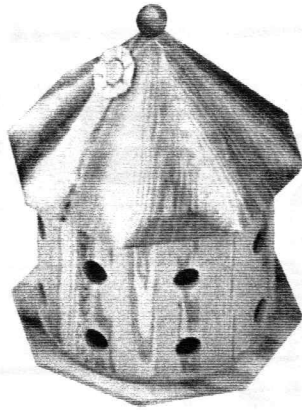
John Shooshan won the Turned Object Lottery, a bowl made by **Hank** and now it's his turn to make something for the next meeting's lottery.

Members got the point - made ten awls - all types and sizes. Next meetings challenge - turn a goblet.

A wood swap was held at the end of the meeting.



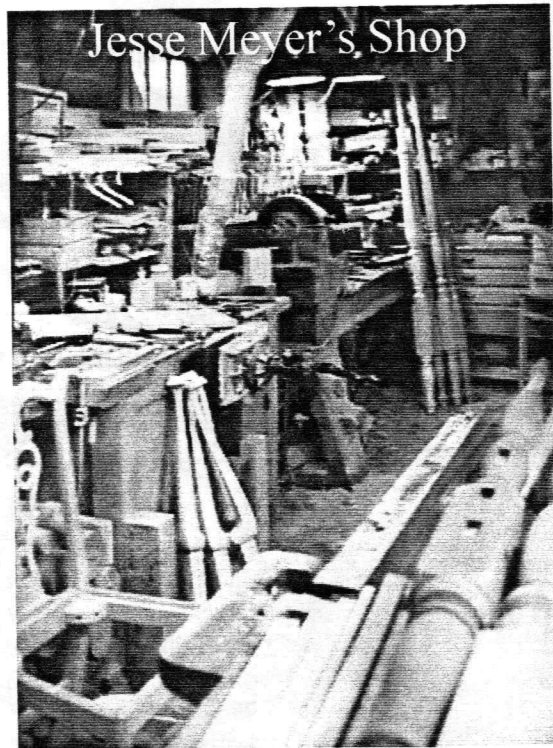
Roger Hill's award winning birdhouse at the Annual Birdhouse Show and Auction to Benefit South Shore Habitat for Humanity



Mal's awl finished with Myland High Build Friction Polish used by Keith Rowley

Making Turned Cabriole Legs

An excellent article with drawings and photographs is contained in Norman Vandal's book *Queen Anne Furniture, History, design and construction*, pages 27 thru 30. He details both converging axes and parallel axes covered by Jesse in his presentation.

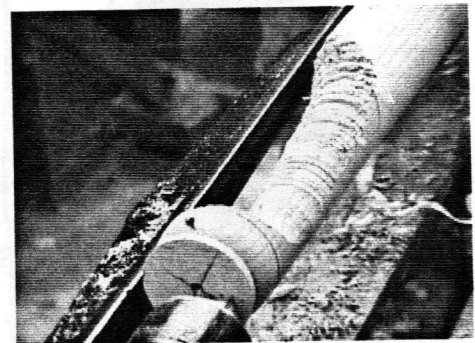


Jesse Meyer demonstrates turning cabriole legs

After explaining the layout of legs including making a full size drawing, locating axes and preparing stock, Jesse starts turning



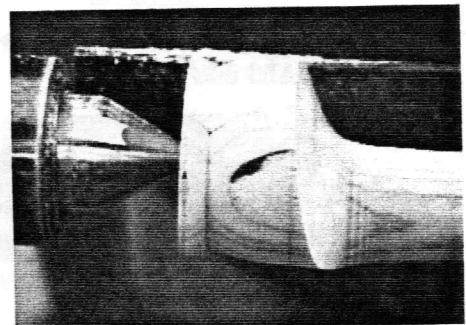
The stock is remounted with leg offset axis at tailstock and turning starts at foot area



Foot area roughed out

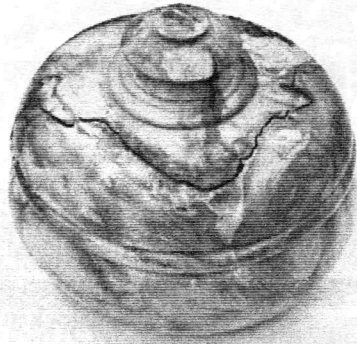
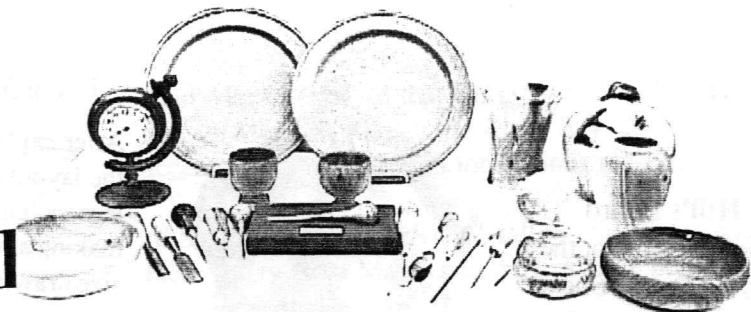


Roughing-out gouge being used to form tapered leg



Closeup of finished foot

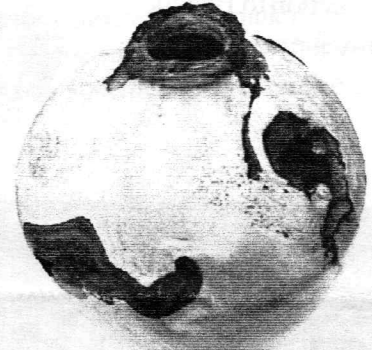
April Show & Tell



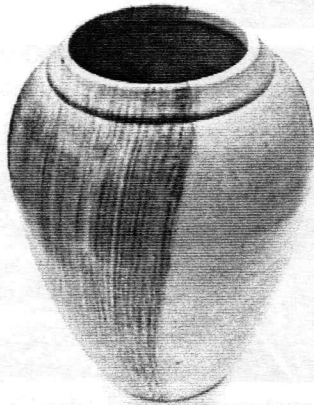
Richard Friberg's beautiful gift box turned from wood swap wood



Cherry Kups by Keller
Fabulon poly finish



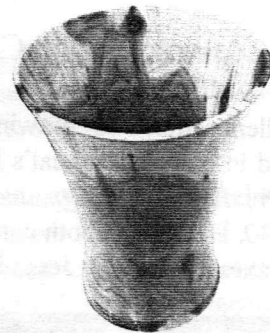
Roger Hill's maple closed form delights the senses



Black heart maple vase by Richard Friberg
His mother bid for it at auction - good choice!



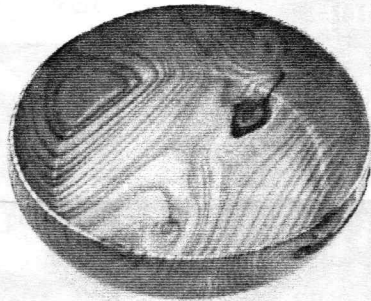
Spectacular Walnut Clock and barometer by John Murphy



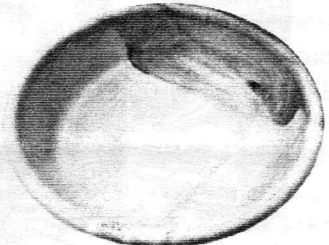
Cedar vase from swap wood by Hank



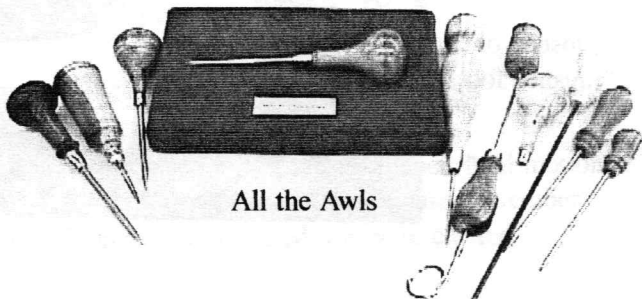
Lovely Russian Olive bowl by Hank Cahill



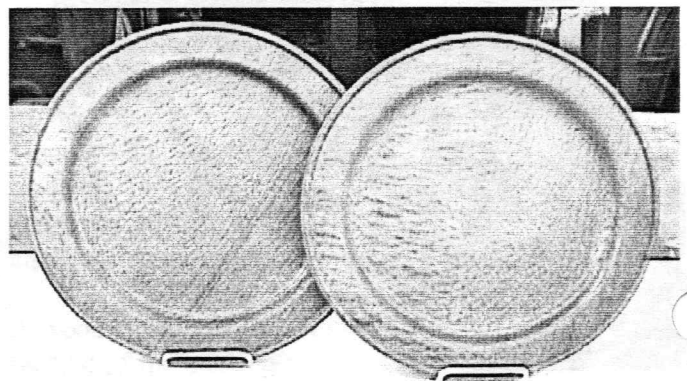
Curly Maple Dish by Hank



Screw ball by Wally Kemp - who else?
And one meeting late!



All the Awls



Hank used 12 year old lacewood for these 13" dia plates with character

Woodturning Weekend With Keith Rowley and Peter Gill

By Mal Partridge

A Woodturning Weekend was held April 23-25, 1999 at the WOODCRAFT store in Woburn, MA. The events included a Book Signing on Friday, Turning Demonstrations on Saturday and Q & A Session on Sunday. However Keith demonstrated all three days.

Store personell set up the new Nova 3000 lathe in the showroom and had many turning blanks on hand. A tool grinder was available for Keith's use in the shop area. A Oneway Stronghold chuck was supplied as needed. A small lathe was also set up for his use. Chairs were arranged so that everyone had a excellent view of the turning action, although when there were fewer people they stood around the lathe for a closer look. The interaction with Keith was great!

I spent all three days watching, learning, talking and taking digital images of the proceedings. Peter Gill, Managing Director of Robert Sorby, Sheffield, England, who sponsored Keith's demonstration tour, after reviewing our MSSW newsletters commented that they were the best he has seen in all his travels.

Robert Sorby has 45 employees, 40 in manufacturing and five in the office. Most of their products are designed and produced in house including lathes, woodturning and carving tools and other woodworking supplies. The ash wood for the tool handles comes from USA and are mostly turned on an automatic lathe at a rapid rate.

Peter promised to send a video for our groups use. A week after we met an Airmail package arrived from England with three excellent videos! *Starting Out Woodturning*, ideal for novices, *Decorative Techniques*, aimed at the intermediate turner and *Metal Spinning* as seen through the eyes of a woodturner.

A letter of thanks from MSSW members with picture montage of his and Keith's visit to Woodcraft has been sent.

Those who did not attend missed an opportunity to see one of the world's best professional woodturners and a really likeable gentleman. He writes and types his books himself, no ghost writers. As a former policeman in the CID for 20 years he knows how to write reports in detail and this has helped him in explaining correct and understandable turning procedures.

Keith served his early days in the joiner's shop at a coal mine in South Derbyshire and had a 'love affair' with woodturning, turning newels, balusters, chair and table legs, etc. His father bought him a Coronet lathe for use at home and the lathe is still in use today almost 50 years later. In the late fifties the demise of the coal industry forced him to secure a job with the Nottingham City Police. Since leaving the police department he has been turning and teaching professionally.

His book *WOODTURNING A Foundation Course* is used throughout the world as the reference for teaching woodturning. The artwork, the best in any turning book, was done by a draftsman from Rolls-Royce. When the book first appeared he received a call from Mike Darlow, from Australia, complaining that his scientific method of turning was not used in the book!

Keith believes that learning to turn between centers first establishes the fundamentals for all turning. He had a young fellow who had never turned producing beads and coves in no time with no catches.

He used a handy drive center called a *Stebcenter*, made in U.K. and available from Craft Supplies USA, which is excellent for spindle turning as you can examine the work without stopping the lathe, due to a spring loaded center point. You only need to make a locating hole on each end of your stock to begin. See the description in the Craft Supplies Woodturners Catalog 1999 which also features Keith's projects and book on the cover.

Keith turned a few long-stemmed goblets and earring stands shown in his projects book as well as going over the fundamentals and answering questions. The longest thin stem goblet he has made in England is over two feet. To hold the goblet at the tailstock while turning the stem he uses a wad of toilet tissue and wooden plug in the inside of the cup. Brand unknown!

The pictures tell the story and show Keith in action. He was an interesting and likeable person willing to help all those who asked. He personally ground a spindle gouge I purchased to his preferred shape. His sense of humor enhanced his presentation. A gentleman turner who will be long remembered, one willing to drink a toast from his turned goblet to all the woodturners present, Chips!

Woodturning Weekend with Keith Rowley and Peter Gill



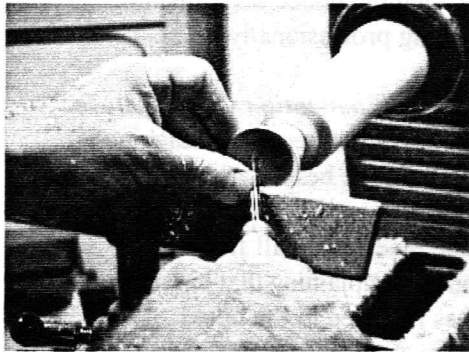
Keith instructing new turner



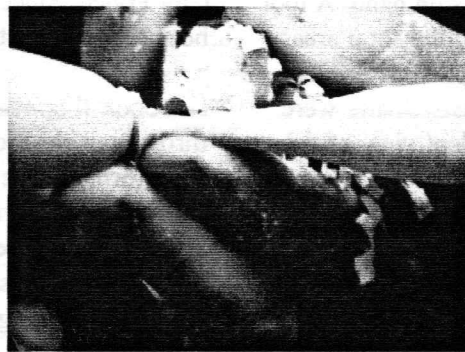
Finishing dish on Nova lathe



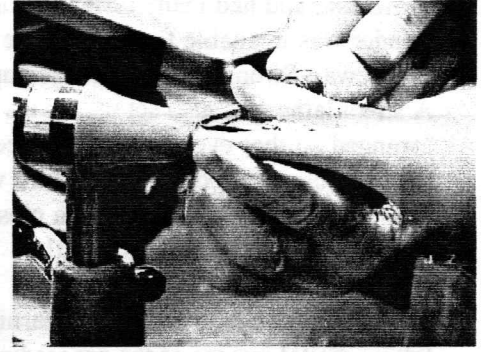
Peter Gill, Managing Director Robert Sorby



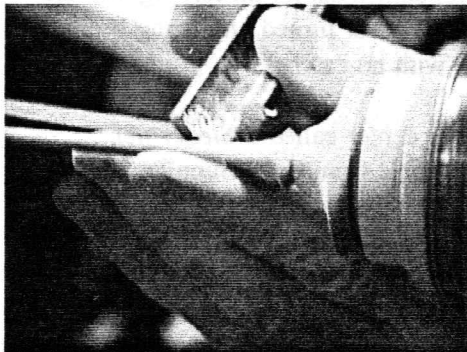
Finishing cut on goblet cup interior



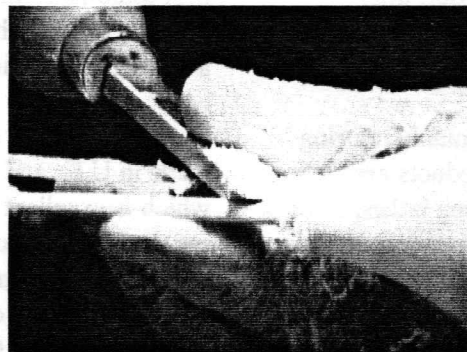
Starting stem with roughing gouge



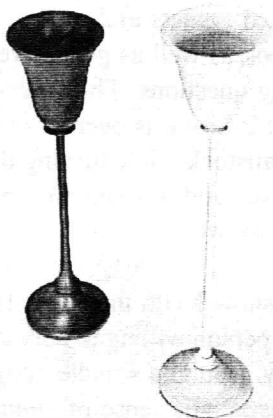
Detailing cup base with small gouge



Reducing stem diameter with roughing gouge and completing with skew



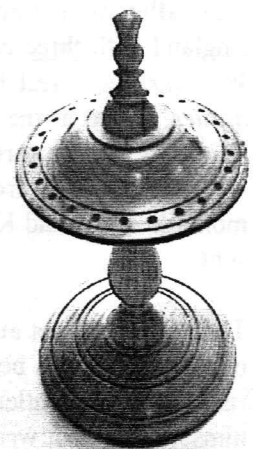
Detailing base with gouge



Long Stemmed Goblets



Cheers! To a job well done



Rowley earring stand