

# AS THE WOOD TURNS

May 2000

## The Parting of the Ways, Or the Ways of Parting

When Wally Kemp decided to turn ornaments seen in an old issue of *Turning Point* requiring a narrow parting tool he remembered that John Murphy had purchased a Sorby fluted parting tool for use in turning parts for the AAW collaborative project.

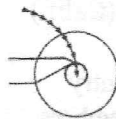
The ornaments are made up of wood segments turned with many thin fins representing various objects. They are broken apart and reassembled outside in, then turned to final shape. See photograph taken at April meeting on back page of this newsletter.

When Wally made his Show & Tell presentation he showed how he used the parting tool. As members so like to do, he was critiqued on his method, which of course was wrong according to instructions included with the tool!

Needless to say a demonstration at the MSSW lathe was needed. Wally did it his way, it worked of course. Then John Murphy sharpened the tool and did it the Sorby way. The finish of the cut was cleaner it seemed, although a vote was not taken in interest of harmony!

Just the facts, ma'm. The following excerpts are from various sources as noted:

From *Sorby* instructions with micro turning set -46HS:



### 870H 2mm Fluted Parting Tool

The Fluted Parting Tool gives an exceptionally fine finish to end grain and should be used in a downwards motion towards centre. It is sharpened by grinding back the small, non-fluted edge.

From *Sorby* catalog description for 2mm Tool 832H:  
"This tool features a radically new and unique cutting profile. The long bevel has a milled flute which is the cutting face. The small bevel is the sharpening face. When parting off this ubiquitous arrangement causes the tip to always cut at a shear cutting angle of 45 degrees, producing a finish without equal from a parting tool, virtually eliminating the need for sanding"

From *Packard Woodworks* catalog:  
"The flute milled along the long bevel produces two spurs that cut the wood fibres minimizing tearout. The short bevel, the one that is sharpened, helps orient the edge at a shearing angle leaving an extremely smooth finish."

From *The Fundamentals of Woodturning* by Mike Darlow  
"A parting-off tool's upper bevel should be flat in cross section., its lower bevel should be shallow fluted. If you flute the upper surface, there is more risk of losing control because the bevel's edges are more likely to catch. If the flute in the lower bevel is deep rather than shallow, the tool will cut less freely."

### 2000 MSSW Officers

**President** - Hank Cahill (781) 878-0234  
**Vice President** - Felix Troiano (781) 749-1713  
**Treasurer** - Wally Kemp (781) 871-1390  
**Secretary** - Mal Partridge (781) 843-3883  
**Librarian** - John Murphy (781) 834-1179  
**Newsletter** - Mal Partridge (781) 843-3883



### Next Meeting

Tuesday, May 23rd, 2000 - 7:00 P.M.  
At Janet Collins' Shop (See map)  
Refreshments by: Wally Kemp  
Member Challenge: Turned Cord Pull  
(Reference *American Woodturner* Fall '99)  
Demonstration: by Janet Collins

## Meeting Minutes

The April meeting was called to order at 7:18 at Hank Cahill's Dust Bowl

### President's Report

**Hank** introduced guest **Tom Holland**, a previous member. (Editors note: Now a current member!)

Correspondence received by **Hank**:

AAW "Care" package including Member Challenge Rules, Symposium information, Membership forms and copies of American Woodturner for distribution. At this time we have 100% AAW membership.

Central Coast Newsletter from George Paes. (Calif.)

South Shore Art Center, Cohasset Common, entry forms and due dates for members and non-members.

May issue of Woodturning for review.

**Wally Kemp** reported on drop off date for North River Art Society entries. Show dates May 27, 28th.

Treasury currently at \$1142.47.

Librarian **John Murphy** reported everything OK.

### Other Business

There were no entries this year for the Habitat for Humanity bird house show and auction.

It was reported that HK Hardwoods is not moving from their present Brockton location.

**Wally** will contact Ellyn Einhorn at Mass Audubon in reference to Daniel Webster Field Day participation.

The May meeting will be held at Janet Collins' Shop.

**Hank** is investigating grants that may be available to promote woodturning.

**Ernie** brought in a Lee Valley Tools catalog - good stuff!

## AAW Chapter Collaborative Project

**Mal** again used a flip chart to review progress on our project. Photographs, sample parts, tools, jigs and fixtures were shown and explained. The assembled project to date was displayed and is nearing completion.

**John Murphy** showed a draft of a possible handout at the AAW symposium. **Mal** gave **John** a copy of his project notes to date for reference and will contact AAW to find out what we can have at our display to describe the project.

A group picture with the participants in the project will be taken at the May meeting. It was requested that **Mal** bring the MSSW banner for a backdrop.

**Editor's Note:** An E-mail was sent to AAW Director Norman Hinman and his reply is included:

Malcolm:

Your questions have not yet been answered since they have so far never been asked. I believe the following to be as close to the truth as anything available. I may get in trouble with the rest of the Board, but here goes.

- >
- > We need answers to the following questions:
- > Can we distribute handouts describing project?
- >

Answer: Having a handout describing your project available next to your piece, within your allotted display space, at the display site would be all right as long as it contains no advertisement material other than information about your chapter.

- >
- > Is an audio/video slide show showing turning techniques in making project allowed? Is A/C available to power TV/ VCR?
- >

Answer: To conduct a slide show you would need to find an available empty room during a time when that room is not being used for another symposium related purpose. There will be no space available in the Collaborative project display area. Available power in such a room is probable, but cannot be guaranteed. I would not be too hopeful of finding such a room since all space reserved and paid for by AAW in the Convention Center is quite heavily planned for. It would be catch-as-catch-can, and unrealistic to expect much availability.

- >
- > Are notebooks and literature describing research, fabrication and other details of project acceptable for viewing at display?

>  
Answer: A notebook showing how the work was conducted could be a valuable aspect of the project and the display as long as it is neat and didn't detract from the general appearance of either the Collaborative display area or your space. It must fit, and be usable, entirely within your allotted display space. A large unfolding blueprint, for instance, would not be acceptable

>  
> Is a display board with photographs and drawings behind project allowed?

>  
Answer: Yes, as long as it fits within your allotted display space.

>  
> Due to the fragile nature of our chapter challenge can the project be covered with a clear plastic cover sized to fit within the 2 ft. cube? If OK is the cover included in the weight limit?

>  
Answer: Yes, and yes. It is my current opinion that the plastic (I am assuming you are speaking of Lucite, but whatever) could be of such size as to contain a 2 ft. cube if the material is in the order of 3/16"-1/4" thick, but if you have already planned your project so that the cover could fit into the 2 ft. cube, all the better. The cover must be included in the 25 Lb. weight limit since it would be sitting on the table with the piece.

> I would appreciate a reply as soon as possible as time is running out. These questions were just brought up at our last meeting and not answered in the rules outlined in American Woodturner.

>  
I hope this helps.

Good luck with your project, and yes, I will see you in Charlotte!

Norm Hinman

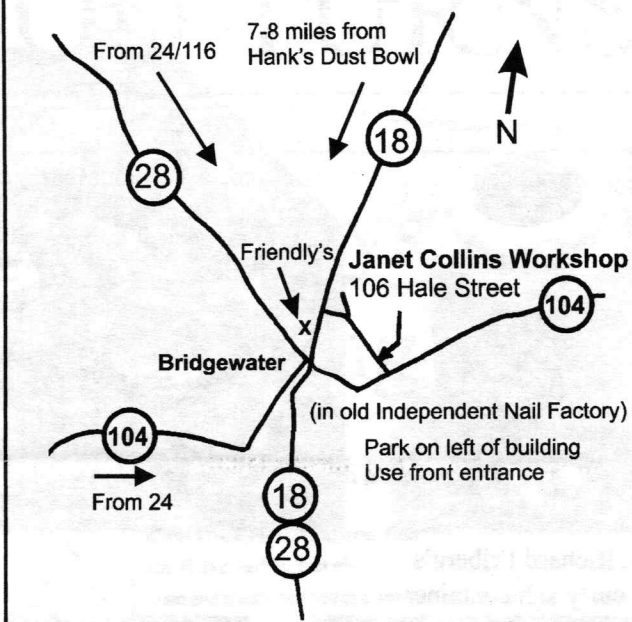
Some things need clarification - The slide show would be on tape and displayed on a TV/VCR, not a 35mm projected slide show - What is the size of the allocated space for each project? **Mal** will check with Norm and report.

Note: A plastic cover is not practical due to it's weight which with our project would exceed the 25lb. limit.

A few MSSW/AAW Chapter Collaborative Challenge 2000 statistics:

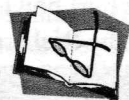
Member participants - 9, Time to fabricate - a lot of!  
Drawings - >148 (>500 hours spent to draw)  
Fabricated parts - >400 to date

## Directions to Janet Collins' Shop



**Note:** Pictures of our project will be published in the newsletter after the AAW Symposium

Welcome Back Member  
**Tom Holland**



## Library



The Library has a good selection of periodicals and books thanks to the donations by members. A self service system will be used for distribution. The following procedures have been set up to keep track of the collection.

The Librarian has been authorized to spend \$25.00 per month for additions to the library. Members are requested to submit their suggestions for new books, magazines and videos.

### Check Out

1. Sign and date control card found in book pocket
2. Place card in index box
3. If checking out a video:  
Give \$2.00 rental fee to **John Murphy** or place money in index box

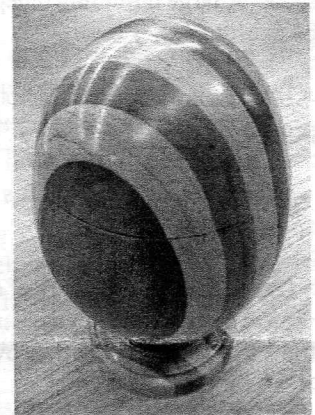
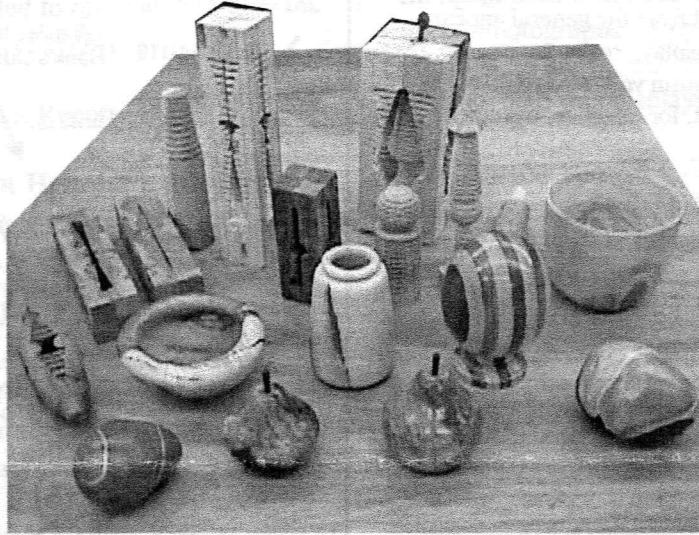
### Return

1. Find control card in index box and cross off name
2. Replace card in book pocket

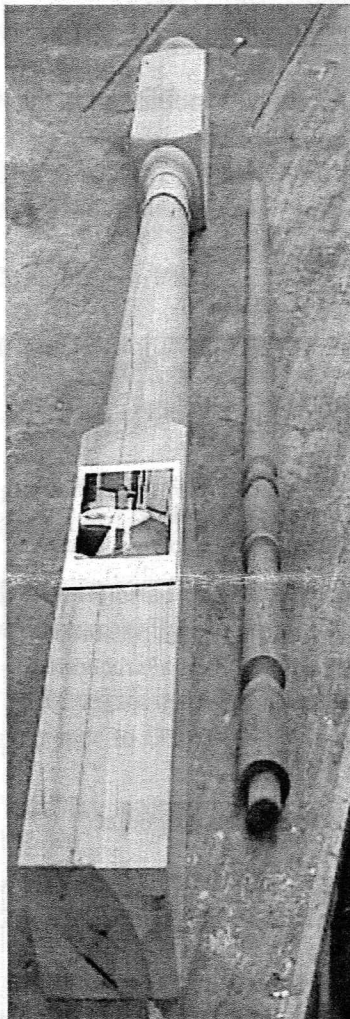
# April 2000 Show & Tell



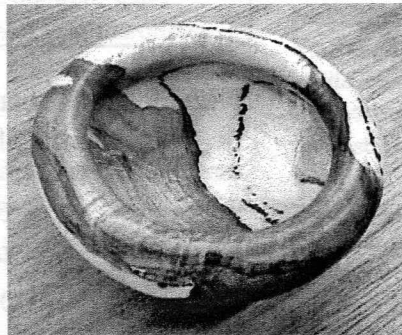
Richard Friberg's curly ash container



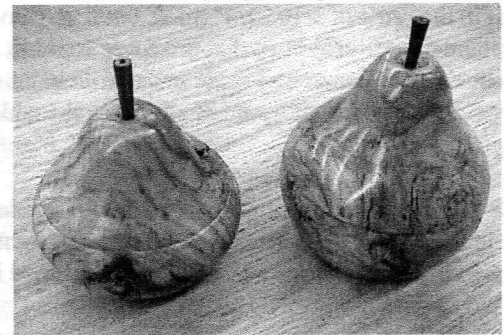
Jeffrey Keller's walnut, maple, & cherry egg shaped container



Jesse Meyer turned 2 cherry newel posts and 18 balusters



Maple burl bowl with rolled edge by Richard Friberg



A pair of pears from cherry burl by Jeff Keller with walnut stems



Wall Kemp's "Parting is such sweet sorrow" ornament experiments (see front cover) and colorful eggs