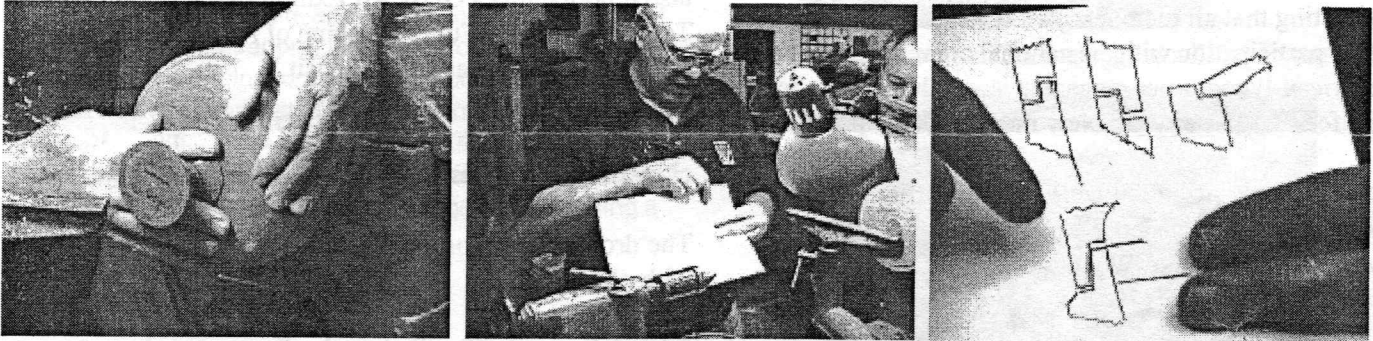
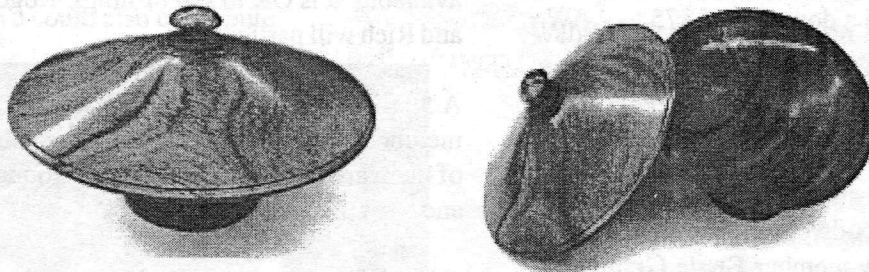

AS THE WOOD TURNS

May 2001

Put a Lid On It!



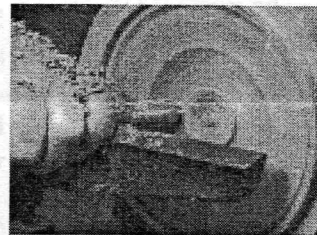
John Murphy showed us how



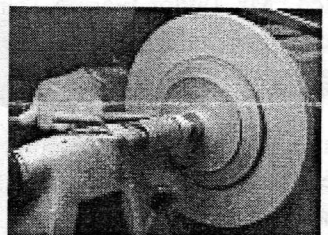
Establish rim for fit



Cleaning out and shaping inside of lid



Top of lid is shaped



2001 MSSW Officers

President - Hank Cahill (781) 878-0234
Vice President - Felix Troiano (781) 749-1713
Treasurer - Wally Kemp (781) 871-1390
Secretary - Mal Partridge (781) 843-3883
Librarian - John Murphy (781) 834-1179
Newsletter - Mal Partridge (781) 843-3883



Next Meeting

Tuesday, May 22nd, 2001
7:00 P.M.

At Hank Cahill's *Dust Bowl*
Refreshments by: Richard Friberg
Member Challenge: dibber
Demonstration: TBD

Meeting Minutes

The Meeting was called to order at 7:10 pm at Hank Cahill's Dust Bowl

President's Report & General Business

Hank introduced two guests, Jay Creeden and Vernon Perry who became a new member having just bought a new lathe.

Correspondence was received from Bonnie Klein requesting that all members join AAW so that we have 100% participation with the national organization. The American Woodturner magazine is worth the membership fee of \$35 per year. New members take note!

Catalogs for distribution were received from Packard Woodworks. A newsletter was received from the Surrey Association of Woodturners in U.K.

A message from the AAW board of directors to member chapters requested help in defraying costs of blanket 3rd party coverage insurance policy for chapter sponsored events or turning demonstrations, demonstrations, etc. Members voted a donation of \$75 to AAW.

Audubon Farm Day is September 29th. Wally will send \$25 to cover our participation.

Secretary **Mal Partridge** showed a copy of *The Old Saw* The Guild of NH Woodworkers newsletter that had an excellent article by member **Ernie Grimes** titled "Mr. Taylor Wore A Derby - The Rest Of Us Wore Caps" telling about his experiences in woodwork before WWII in his own words. Enjoyable reading!

Having seen our Gnome Rotary Engine on display at the Providence Woodworking Show Todd Davis called **Mal** to inform him of the 21st Cracker Barrel Fair, Wrentham, MA to be held September 13-16 rain or shine. We were offered a space of 15' x 15' with security, etc. for a turning demonstration and exhibit. The Fair will be set up with theme blocks of exhibits and attendance has been in the 20,000 range. We will be in the area with a saw mill exhibit, Tree of Hope, American Chestnut Foundation, etc. Although there is no fee for the exhibit, if we plan to sell turned items there may be. **Mal** will check and find what can be arranged. The membership felt this may be a good *affair* to attend.

Mal received a letter from Lew Schlotterbeck, President of Cape Cod Woodturners, with thanks for the picture of John Barrett that was sent to them.

Paul Marks suggested via E-mail to **Mal** that as we recently have been discussing chainsaw operation a site from New Zealand has an excellent Chainsaw Safety Seminar article that would be of value to our members. A copy of the 22 page seminar was printed for member use. **Site:** <http://www.garden-aids.co.nz/safety.html>

Treasurer **Wally Kemp** reported \$980 in treasury. He also reported that a Glass Art Exhibit by Lino Tagliapietra at the Fuller Museum of Art in Brockton, Feb 24 - May 20 was worth a visit.

Librarian **John Murphy** reported 2 books and 4 videos checked out. The missing video is still missing.

The drop off date for the North River Art Center is 25th of May.

The Cohasset Art Festival on the Common is in early June for three days Friday, Saturday, and 1/2 day Sunday. A 20x20 ft. tent for display with power is available. It is OK to sell turnings. Roger, John, Leonard and Rich will participate.

A 50 piece carbide bit set (\$19.95) was shown to members with the warning not to get stabbed as some of them are only .012" dia. spiral ground! **Wally** knows, and says they break easily.

An article on pool cue turning was given to **Jeff Keller**. He's our local expert and could write his own. How about it Jeff? Take the cue, the newsletter will publish!

Bernie brought some copper braid (used as a desolder wick) that could be used to lace up cracked turnings.

Our 1/2 size Gnome Rotary Engine wooden replica may soon have a full size brother! **Mal** noticed the following request on the net while searching for information on the Bleriot aircraft.

"College Park Aviation Museum, College Park, MD - One of the current projects is a full scale reproduction of a Bleriot XI aircraft for display in the museum, about 50% complete. They are looking for any dimensional drawings of Gnome 7 Cylinder engine to build a wooden mockup for this project. Any help is appreciated. John Liebl."

Welcome New Member Vernon Perry

Mal has contacted John and will prepare a drawing set for them to fabricate an actual size engine.

A care package will be sent showing in detail how we made our engine, along with copies of *As The Wood Turns* with the cronology of our project. John, too, has searched the world for drawings of the Gnome engine:

Mal:

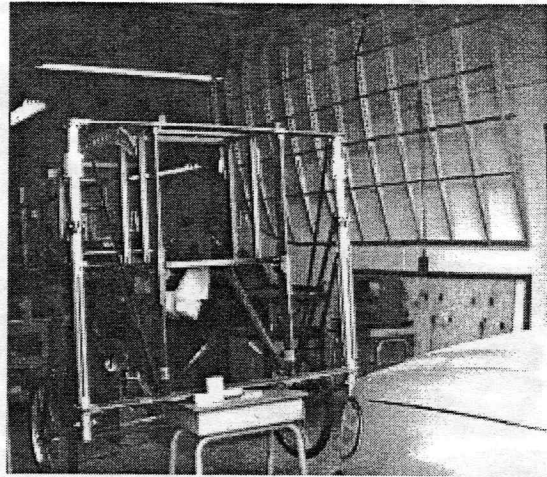
It's great hearing from you. Your offer to supply drawings for the Gnome engine was God sent. Please send the info on how I can obtain a copy of these drawings. Please include all costs.

I down loaded your site and the finished product is just magnificent. I can appreciate your problem getting copies of the original drawings. I've been at it for over a year. I contacted most of the museums in Europe to no avail. I worked at the Smithsonian Garber Facility, working in restorations. I can vouch for them that they do not have any Gnome engine drawings. I'm enclosing a photo of our Bleriot.

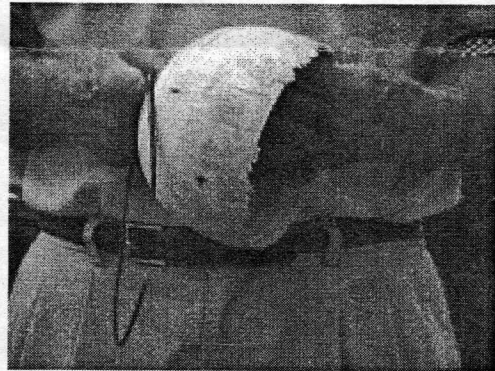
Hoping to hear from you soon.

John Liebl

Editors Note: A 1/2 and fullsize drawing set is in the works. I have suggested they contact AAW chapters in their area for volunteer help in turning parts for their Gnome engine. We could also contribute.



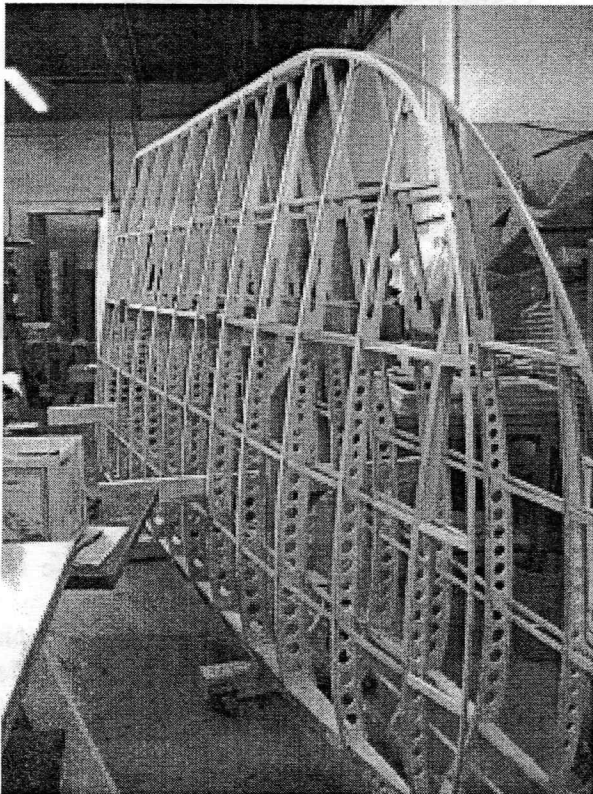
This is where the Gnome engine will be mounted



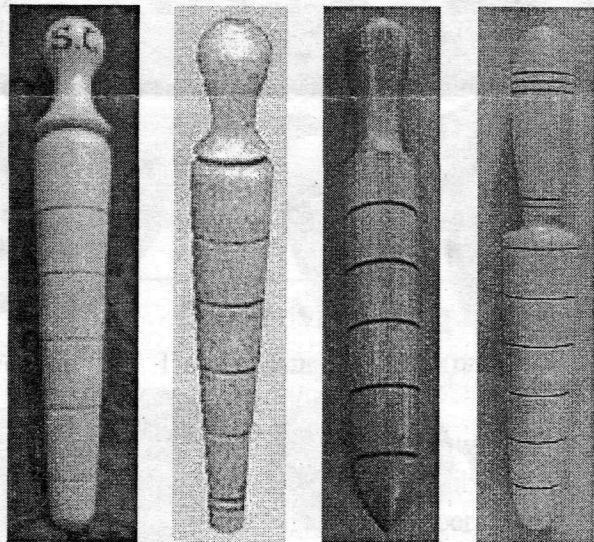
Wally's thickness gage didn't work for his bird house turning - now two pieces! Or is it an art work - see back cover of *American Woodturner* Spring 2001

Member Challenge - a dibber

The dibber, also known as a dibble, is used to make holes in cultivated soil for planting bulbs, seeds, etc. Most have depth indicators in one inch increments.



College Park Aviation Museum Bleriot wings



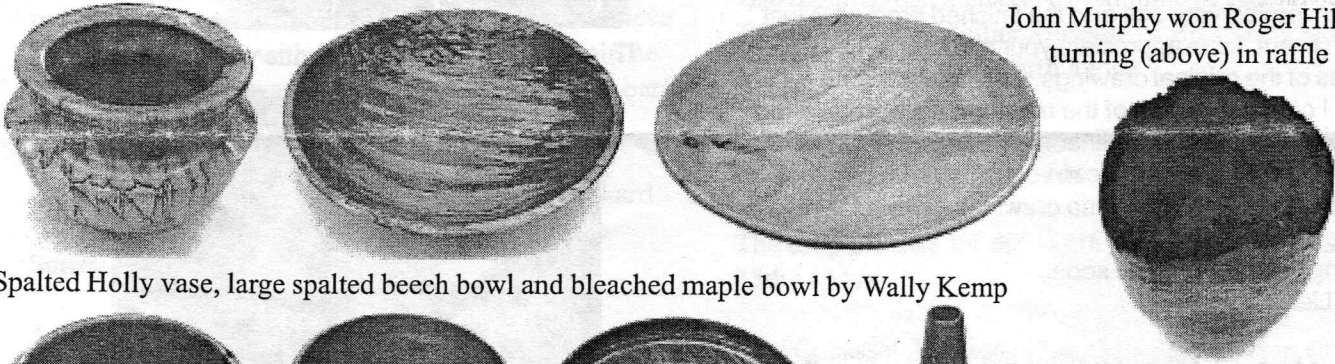
Don't dabble make a dibble

Show & Tell

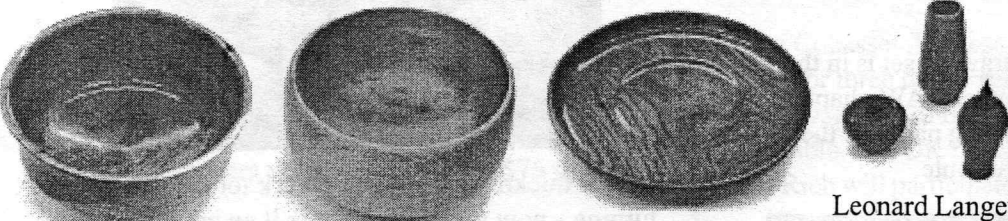
April 2001



John Murphy won Roger Hill's turning (above) in raffle



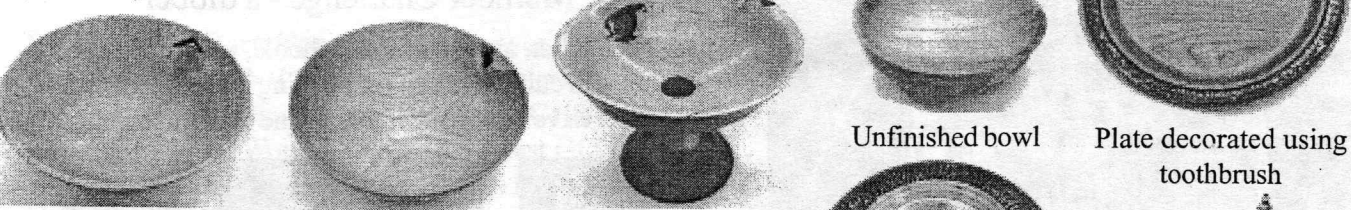
Spalted Holly vase, large spalted beech bowl and bleached maple bowl by Wally Kemp



John Shooshan's old cherry burl turned on Jack Nash's Nichols Lathe

Fumed maple bowl, maple bowl and cherry plate by Felix Troiano (ammonia)

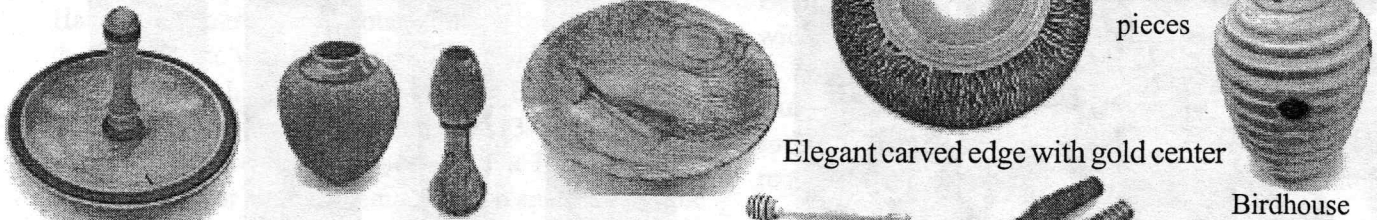
Leonard Langevin's miniatures



Hickory bowls and chalice with cherry base by Jesse Meyer

Unfinished bowl

Plate decorated using toothbrush



Hank's pieces

Elegant carved edge with gold center

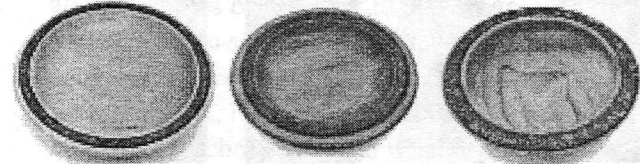
Birdhouse

Candy dish Vase with leaf pattern vase

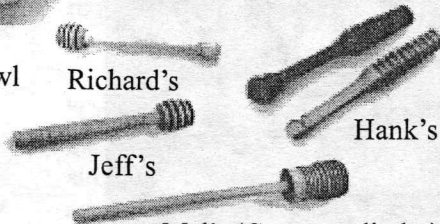
ash bowl

Richard's

Hank's



Richard Friberg's fine assortment



Jeff's

Mal's (Gnome cylinder)

Tom's

Bob Iuliano's beech bowl with chatter pattern

Member challenge Honey Dippers