

---

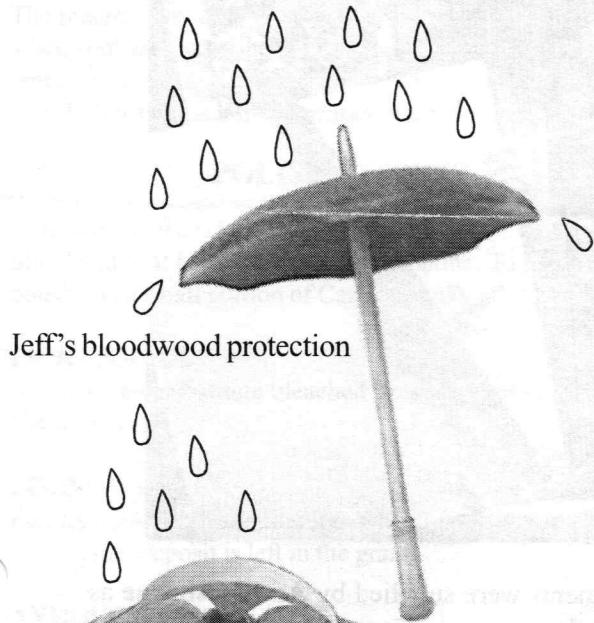
# AS THE WOOD TURNS

---

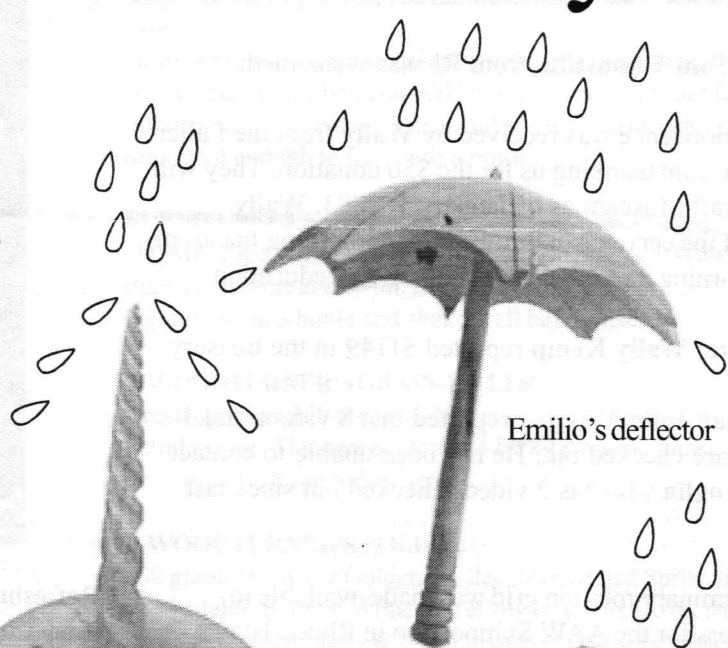
May 2002

---

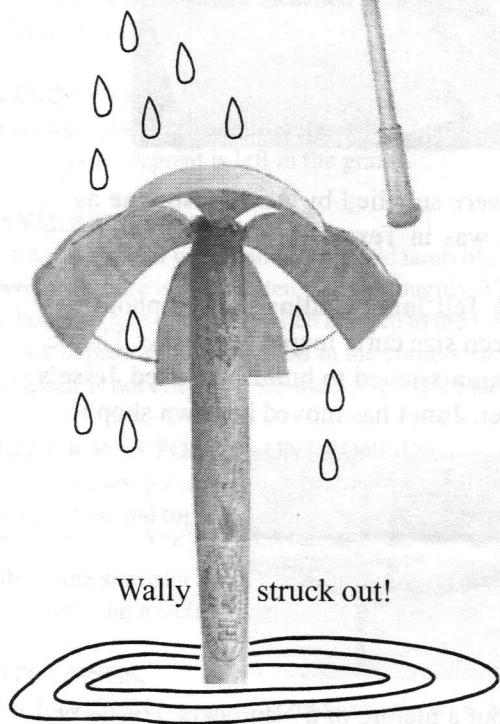
## Our Umbrella Policy



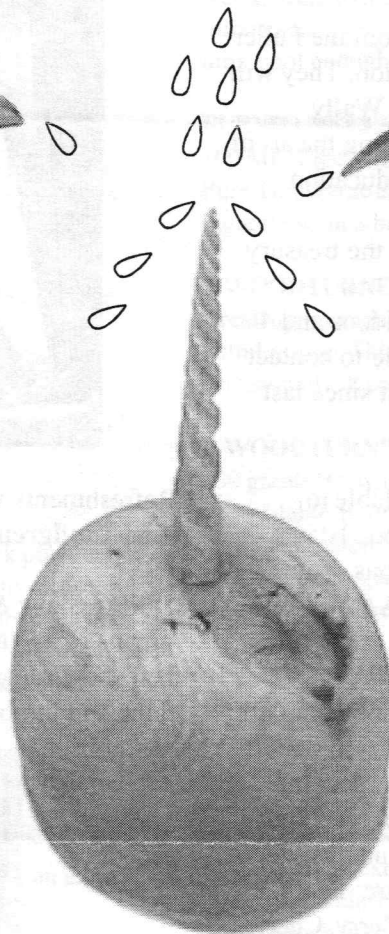
Jeff's bloodwood protection



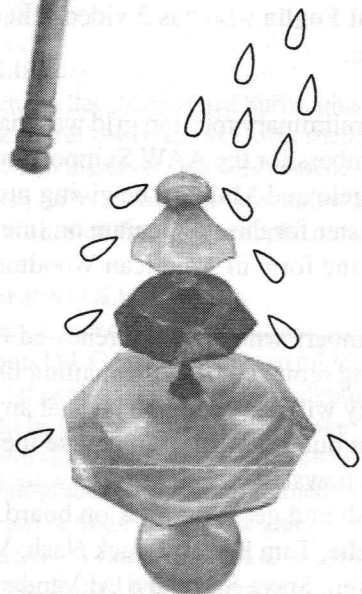
Emilio's deflector



Wally struck out!



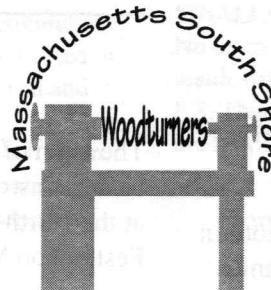
Bob's diverter helmet -  
Get the point?



Lenny's multiple protection

### 2002 MSSW Officers

**President** - Hank Cahill (781) 878-0234  
**Vice President** - Felix Troiano (781) 749-1713  
**Treasurer** - Wally Kemp (781) 871-1390  
**Secretary** - Mal Partridge (781) 843-3883  
**Librarian** - John Murphy (781) 834-1179  
**Newsletter** - Mal Partridge (781) 843-3883



### Next Meeting

Tuesday, May 28th, 2002  
7:00 P.M.

At Hank Cahill's *Dust Bowl*  
Refreshments by: Bob Iuliano  
Member Challenge: Wind Chimes  
Demonstration: A Wobble Box by Emilio

## Meeting Minutes

The meeting was called to order at 7:00 pm at Hank Cahill's Dust Bowl

### President's Report and General Business

**Hank** was in the hospital so **Mal** presided over the meeting. We look forward to Hank's recovery and his return to the Dust Bowl.

Guest **Tom Tomastilla** from RI was welcomed.

Correspondence was received by **Wally** from the Fuller Art Museum thanking us for the \$50 donation. They will be a Craft Museum as of January 1, 2003. **Wally** offered the services of our group in promoting the art of woodturning through demonstrations and education.

Treasurer **Wally Kemp** reported \$1149 in the treasury.

Librarian **John Murphy** reported that 8 videos and 4 books are checked out. He has been unable to contact **Paul Foglia** who has 2 videos checked out since last June.

A preliminary rotation grid was made available to members for the AAW Symposium in Rhode Island. **Angelo** and **Mal** will be giving presentations. You can register for the symposium on line at the AAW site or use the form in American Woodturner.

Members who have not renewed their membership are being removed from the mailing list for the newsletter. They will be welcomed back at any time by sending their dues to **Wally!** Of course they are not receiving this newsletter, so if you know them, why not give them a call and get them back on board. They are: Paul Foglia, Tom Holland, Jack Nash, Vernon Perry, Charles Rosen, Steve Sarro and Al Vandam.

Details of a the new Nova lathe, DVR 3000, were presented for member evaluation.

Wholesale Tool in Stoughton now has name brand woodworking tools and supplies as well as machine tools and supplies.

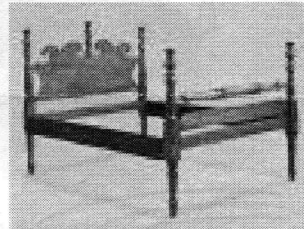
Do you know that there is a Porter-Cable/Delta store in Braintree? It is located at 719 Granite Street, (Granite Plaza) just off Braintree Five Corners.

**Mal** reviewed progress on our AAW collaborative project. Members displayed work completed to date and work in progress. **Lenny Langvin** showed the jig he used to rout components turned by other members. **Ernie** demonstrated the jig he used to layout and fabricate an octagonal component.



Refreshments were supplied by **Andy Osborne** as **Ken Lindgren** was in Texas.

During Show & Tell **Janet Collins** showed photographs of a Queen size curly maple Nantucket Thistle bed she was commissioned to build. She used **Jesse's** lathe and lumber. **Janet** has moved her own shop to Vermont.



Not Janet's, but a picture of a Nantucket Thistle bed

---

## Notice

The team of **Wally Kemp** and **Richard Friberg** will be demonstrating turning tops in the street ( it's closed ) at the North River Art Association's Memorial Day Festival on May 25th.

---

# RECIPES FOR POLISHES AND WAXES

It is time to think about how we are going to finish off our masterpieces, so a few notes on old recipes for polishes and waxes might be appropriate.

## BEES WAX POLISH.

Shred beeswax into a convenient container and add other waxes [ if any ] that may be required. Pour on Turpentine to cover the wax and place the whole vessel in hot water so as to melt the wax and help it to mix freely with the Turpentine. The precise amount of turps is not important but the mixture when cool should be the consistency of butter in summer-time.

NOTE Always use pure turpentine and not mineral turps.

## POLISH RECIPES

### NORMAL POLISH.

Shred and heat beeswax and add turpentine. To harden the polish add a small portion of Carnuba Wax, say 1 part to 15.

### LIGHT POLISH.

As above but substitute bleached beeswax. Leave out the Carnuba Wax.

### LIMING WAX.

For light polish but add titanium white powder pigment so that a white deposit is left in the grain.

### ANTIOUE POLISH.

Make as normal polish above and add lamp black powder whilst mixture is still molten. Stir thoroughly. This turns the whole mixture black and when applied to the timber, leaves a black deposit in the grain and in the corners etc. The amount of black is not critical, it should leave a fair black deposit.

### BLACK WAX FOR USE ON EBONISING.

Make normal polish but only add half normal amount of Turpentine and top up the mixture with eg. Watty Colorwood Stain-Charcoal. Add a small piece of Reckitt's washing blue about the size of a sugar cube, this gives the black an extra intensity and a richer tone.

### STOPPINGS.

Mix equal parts of beeswax and cannuba wax. Melt in a tin with gentle heat and add powdered colour to suit the colour of the timber being stopped. Colour should be approximated to that of the timber after staining. Stopping can be heated in a tin and applied with a match stick or rolled into a rod and used with hot iron.

Mix crushed whiting with French polish ( white polish when timber is light ). Paint the depression with French polish and when dry press in the stopping. This will take a spirit stain like the surface of the timber.

### SOFT FURNITURE WAX.

60 grams of paraffin wax, 60 grams of beeswax, 300ml. turpentine, 300 ml. boiled linseed oil and 5 mls of eucalyptus oil. Heat until all dissolved , partly cool and pour into suitable containers. To make a softer wax, add more paraffin wax, turps and linseed oil.

### FURNITURE CREAM

30 grams of beeswax, 15 grams paraffin wax, 15 grams of pure soap, 120 ml. turpentine, 120 ml. water and 5 mls of lemon essence.

Grate waxes and pure soap into a saucepan, add turps and water, bring to the boil and add lemon essence. Simmer for ten minutes then remove from heat and stir for five minutes or until cool enough to pour into a bottle.

### FURNITURE CLEANER.

100 ML. Cider Vinegar, 100 ml. Methylated Spirits, 100 ml. Pure Turpentine and 50 ml. Boiled Linseed Oil. Put all ingredients in a bottle and shake well before use.

### A WOODTURNER'S GRAIN-FILLER.

Break up into small pieces, white polystyrene foam, cover with Lacquer Thinners & let stand for a few days. Shake occasionally. Keep tightly sealed,

### A WOODTURNER'S POLISH.

100 grams Brown or Golden Shellac, Methylated Sprits, plus up to 1 tablespoon of White or Yellow Beeswax Cover shellac with methylated spirits & when dissolved add wax content. Makes a good general polish on hardwoods & most softwoods, open pores should be sealed first before application.

### ANOTHER WOODTURNER'S POLISH.

100 ml Tung Oil, 25 ml Boiled Linseed Oil, 1-15 parts selected Beeswax, plus 5% Eucalyptus Oil. Gently heat linseed oil & wax in a double container, let cool, add tung oil & eucalyptus oil. Store in screw top [must be air tight] container & shake well before use.

This makes an excellent high-grade finish on most turned-timber particularly hardwoods or timber with close grain. Let dry, cut back with fine abrasives or fine steel wool & re-apply or repeat the process until the desired finish or result is obtained.

### FINALLY.

No matter how good your chosen finishing recipe is, the final result will depend on the standard of work underneath P.S. This is only a small sample of some of the old gems that are lurking under benches..

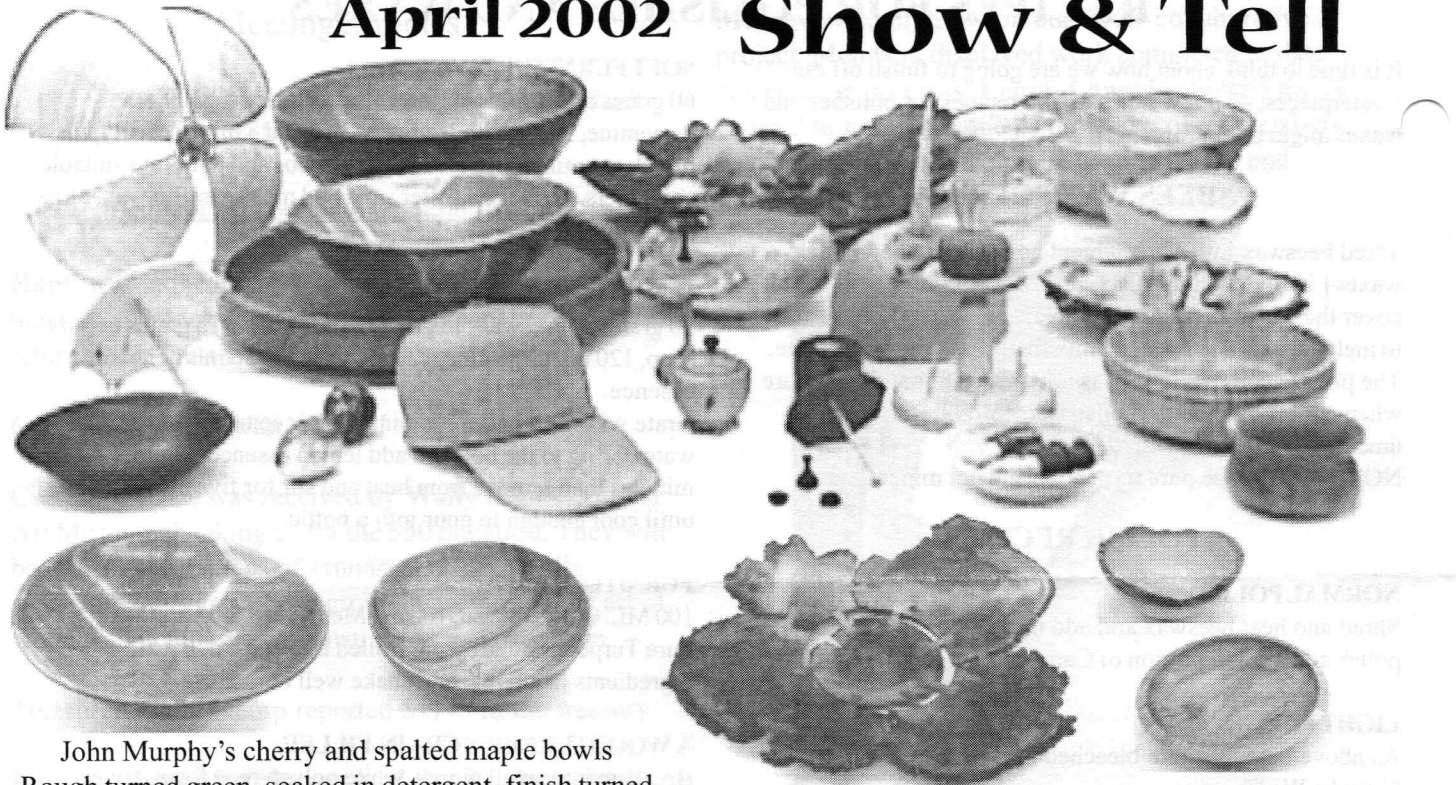
*Rod Jerard*

From the Peninsula Woodturning Guild, Australia

<http://home.vicnet.net.au/~pwguild/>

As suggested by Andy Osborne

# April 2002 Show & Tell



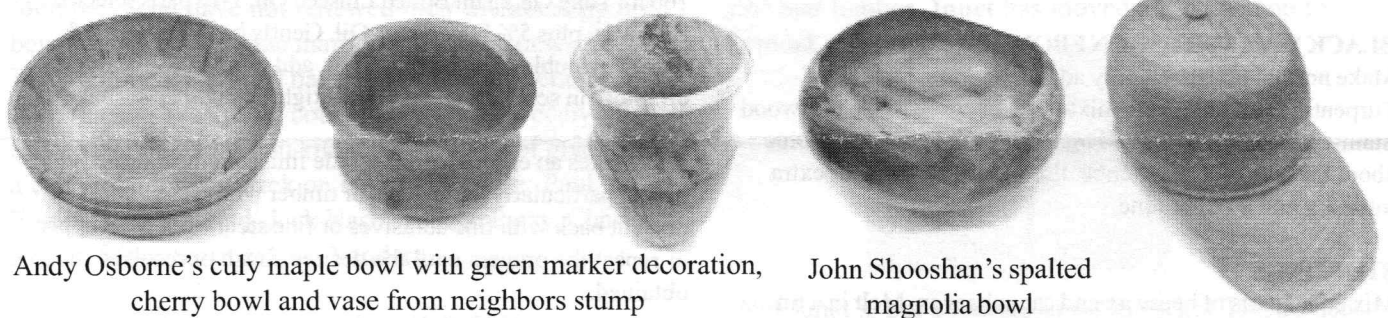
John Murphy's cherry and spalted maple bowls  
Rough turned green, soaked in detergent, finish turned

Wally's bow tie art piece and bowls



Rich Friberg's ash bowl w/stoppers, pin cushion/thread holder and maple burl

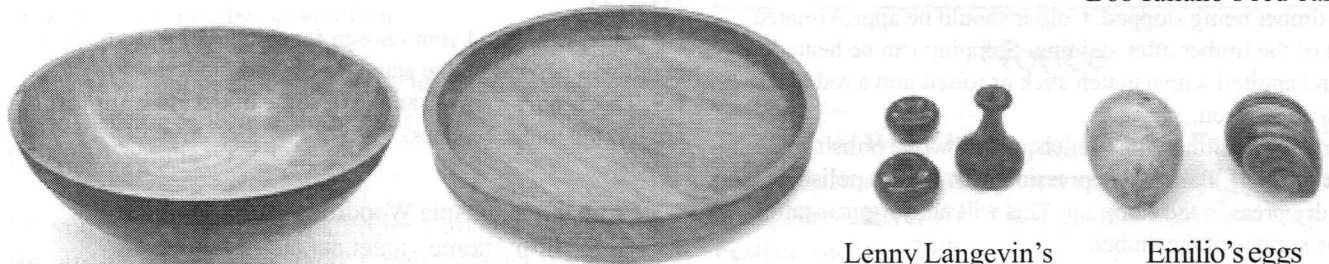
Jeff's pear box and redwood burl box  
with maple burl inlay



Andy Osborne's culy maple bowl with green marker decoration,  
cherry bowl and vase from neighbors stump

John Shooshan's spalted  
magnolia bowl

Bob Iuliano's red oak cap



Angelo's cherry bowl with stippling and walnut road kill plate

Lenny Langevin's  
miniatures

Emilio's eggs  
(Hard boiled)