

---

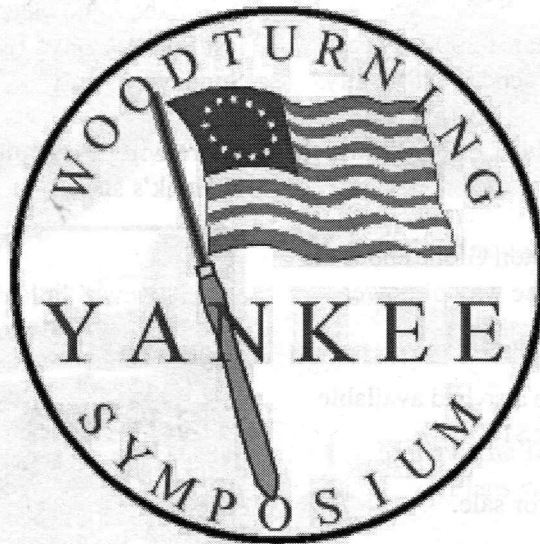
# AS THE WOOD TURNS

---

May 2007 Issue 119

---

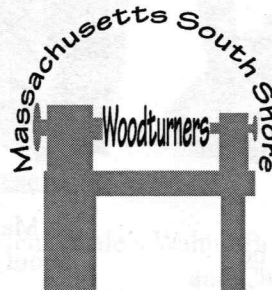
Don't Miss It!  
Turn Out For The



Wesleyan University, Exley Science Center,  
Middletown, CT  
June 1-3, 2007

## 2007 MSSW Officers

**President** - Hank Cahill (781) 878-0234  
**Vice President** - Richard Friberg (508) 378-2436  
**Treasurer** - Wally Kemp (781) 871-1390  
**Secretary** - Mal Partridge (781) 843-3883  
**Librarian** - Leonard Mandeville (508-586-7679)  
**Newsletter** - Mal Partridge (781) 843-3883  
**Web site:** <http://www.mssw.sitelinker.org/>



## Next Meeting

Tuesday, May 22, 2007, 7:00 P.M.  
At Hank Cahill's *Dust Bowl*  
Refreshments by: Charlie Rosen  
Member Challenge: It's Spring -  
Turn a Dibble  
Demonstration: TBD

## Meeting Minutes

The meeting was called to order at 7:00 pm at Hank Cahill's Dust Bowl

### President's Report and General Business

Guests from the Plymouth Woodchucks were Bill George, Leonard Barbien, Ruez Galleran and Charles Stasinos. Mike Veno brought his children Kelvin, Micky (Michael Jr.) and Vanessa.

Hank received and made available the latest CNEW newsletter.

Mal distributed a binder with articles of interest to woodturners including pencil pictures from Ed Flint. He also requested ideas for the monthly member challenge.

You have paid your dues for this year if 2007 appears on your newsletter envelope. If not send \$20 to Wally.

Jesse Meyer had a 3ft. burl available at Lakeville which Nigel will be picking up.

Sid reported on an article in the Boston Globe about the chopping down of Cherry trees in the way of power lines. The wood will be available for takers.

Wally reported \$845 in treasury. He also had available one more gallon of Anchor Seal for \$12.

Bob Francis has a Jet 123" Lathe for sale.

Member Janet Collins was named the Vermont Wood Worker of the Year in recognition of her creative work and her leadership role as President of the Guild of Vermont Furniture Makers by the Vermont Wood Manufacturers Association.

Lenny the Librarian reported Dave Hutchins has donated two books to Library.

Jeff reported a shirt for Bill Leary hasn't been claimed.

Hank will be giving a show and tell shop tour for 13 members from the Fuller Craft Museum on May 1st.

Hank is writing the letter to AAW which will explain what our \$550 Grant will be used for.

The Lathe Stands for our Mini Lathes need to be stronger. We will look for replacements.

Ian's large red segmented bowl won 1st prize in a contest.

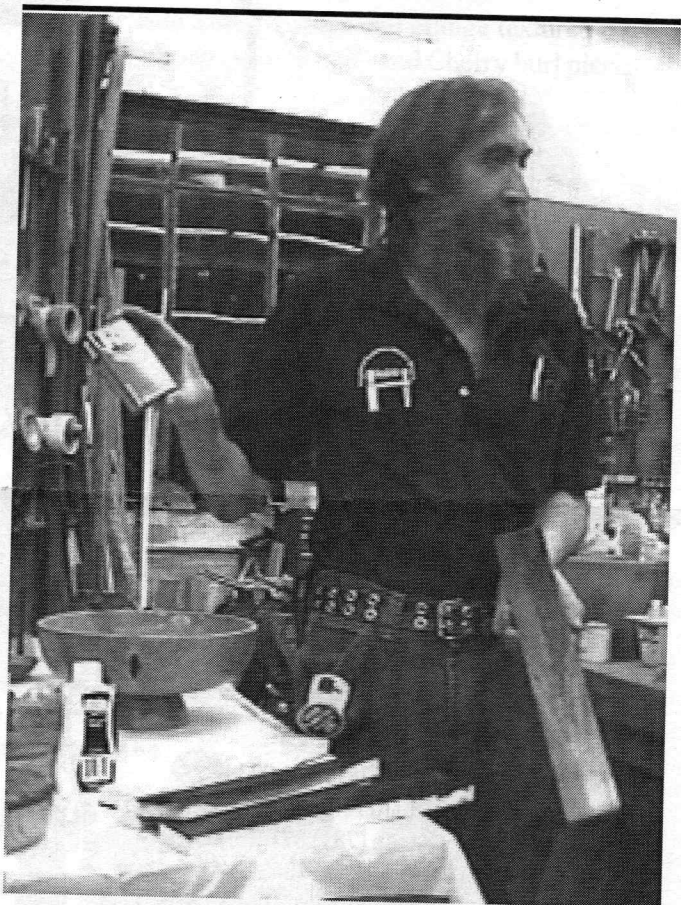
Mike Veno reported that Beaver has a Bowl Lathe for sale at half price for Bill Leary.

Richard Friberg taught a bowl turning class at North Bennet Street School.

Ken reported on Cohasset Art Festival June 15,16,17. For sale costs will be about \$15 depending on number of members selling turnings. Sales range from \$2000-4000 each year. Volunteers are needed to demonstrate. Contact Ken by E-Mail. There will be a Friday night party at Art Center.

A Yankee Symposium meeting was held at Angelo's last Sunday. Dave Hutchins needs people available for Sunday PM duty.

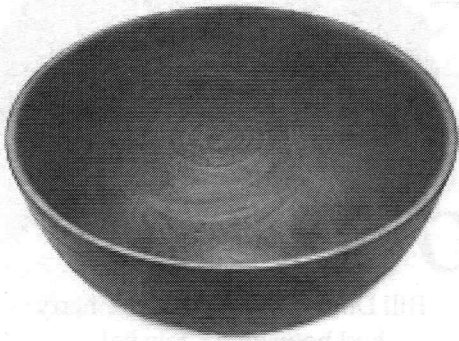
There will be a **Hand's On** Saturday May 19th 10am. at Hank's shop.



Ian Manley gave an interesting and informative talk about using Aniline Dyes for decorative finishing.



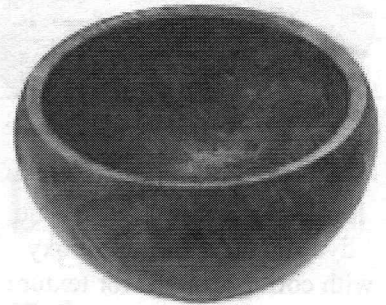
# More Show & Tell



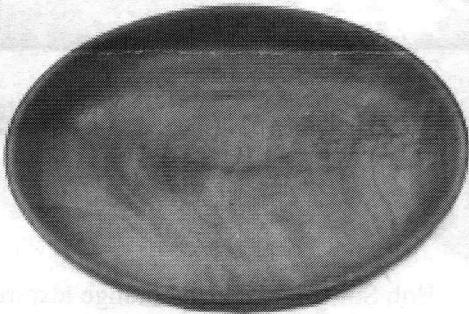
Walnut bowl with 12 penny nail dimpling



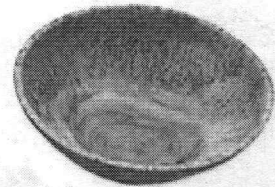
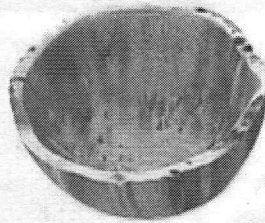
Oak burl bowl



Cherry Burl bowl



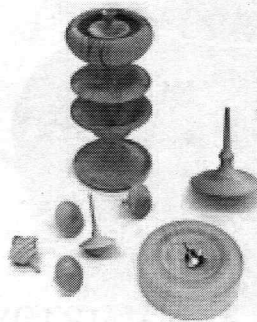
Walnut plate from Rudy Osolnik's wood



Janet Collins brought in a nice assortment of pieces



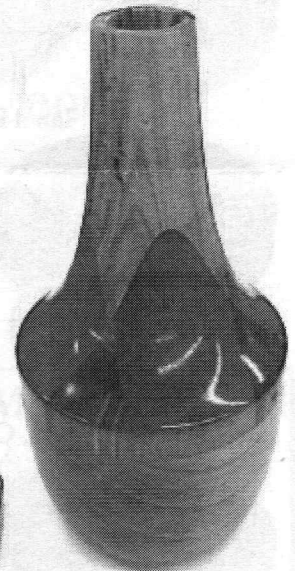
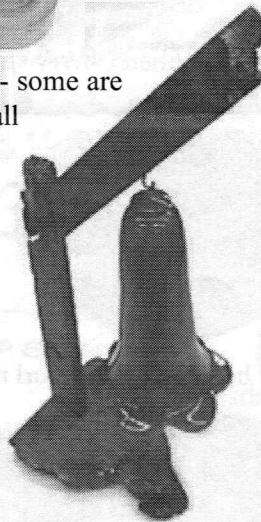
Nigel's donut chuck with Cherry burl bowl



Mike Veno's tops - some are really small



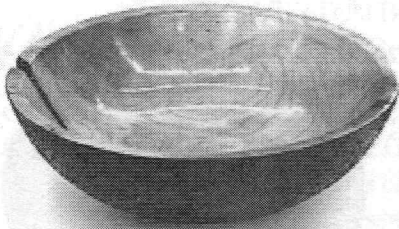
Mal's Lathe Tool grinding fixture  
Plans were available



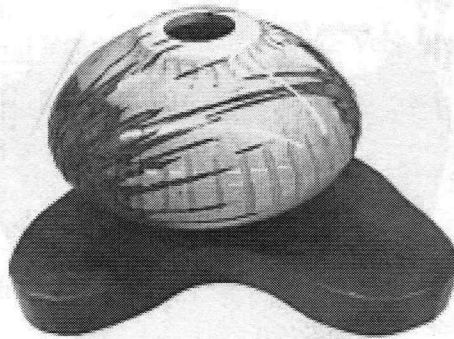
Ben Natale's Walnut Box, Humming bird feeder, Cherry burl candle, and Cherry and Spalted Maple vase

# Show & Tell

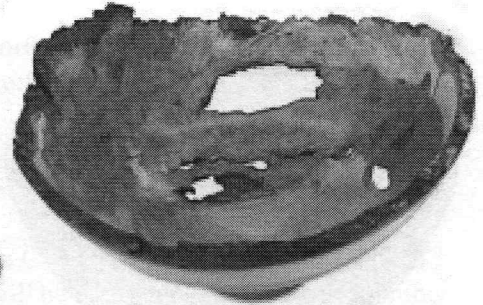
April 2007



Ken's Maple bowl, red aniline dye and clear Bartop Epoxy with coffee grounds for texture



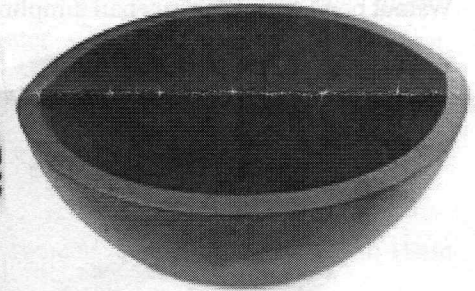
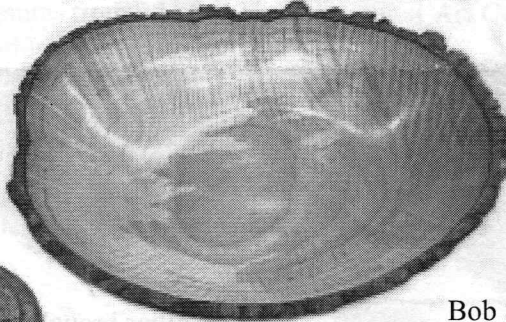
Ken's Ambrosia Maple bowl with beetle tracks and Mahogany base



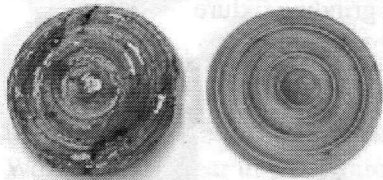
Bill Dooley's natural edge Cherry burl bowl with a few holes



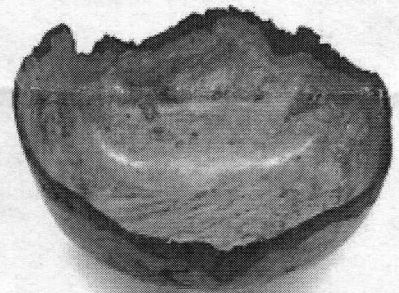
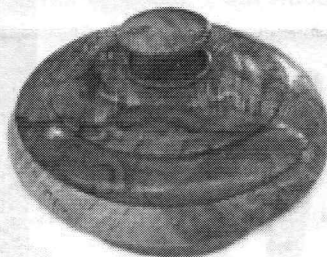
Wally's Cherry burl vase, refrigerator magnet and natural edge Ash burl bowl



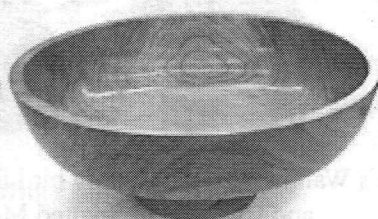
Bob Sutter's black and orange textured oval bowl (split in half) and Cherry burl piece



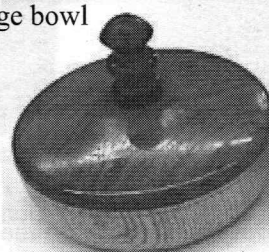
Ian's Rosettes and Brazilian Cherry chip & dip tray



Jeff's Oak burl boxes, Cherry burl box and Cherry burl natural edge bowl



Paul O'Neill's Cherry bowls



Mike's Brazilian Cherry and Sassafras boxes include a penny inside with date