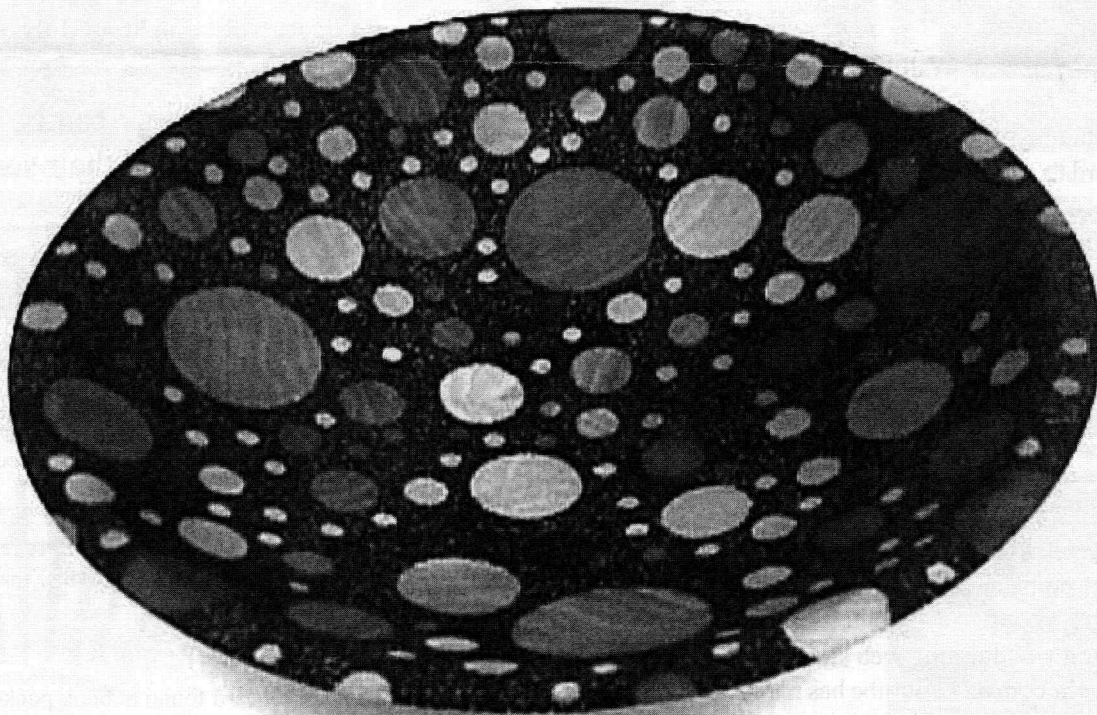

AS THE WOOD TURNS

May 2008 Issue 131

The Big Bang of Woodturning



Andy Osborne's colorfull decorated piece seems to replicate the Big Bang!

2008 MSSW Officers

President - Hank Cahill (781) 878-0234
Vice President - Richard Friberg (508) 378-2436
Treasurer - Wally Kemp (781) 871-1390
Secretary - Mal Partridge (781) 843-3883
Librarian - Ron Robertson (781-545-8295)
Newsletter - Mal Partridge (781) 843-3883
Web site: <http://www.mssw.sitelinker.org/>



Next Meeting

Tuesday, May 27, 2008, 7:00 P.M.
At Hank Cahill's *Dust Bowl*
Refreshments by: Bob Allan
Member Challenge: Coffee Scoop
Demonstration: by David Belser - Turner of the
Magic Safe Box on our June 2007 newsletter

Meeting Minutes

The meeting was called to order at 7:00 pm at Hank Cahill's Dust Bowl

President's Report and General Business

Guests present were Al Bertini, Bill Rullo, and Ed Barry from Middleboro.

Hank received the CNEW newsletter and AAW information from Mary Lacer. He also received an E-Mail from Mal to Mal! Mal explained that this is done so that when a message is sent to a group of members via BCC: they are not bothered with any other obnoxious e-mail headers or everyone else listed.

No treasurers report as Wally was in England.

Hank reported that Librarian Ron Robertson has been working hard to get things organized. Ron has put a check out procedure on the library cabinet. He had duplicate books and videos available for sale to members. Prices marked on items in wood swap area. There are some books in library not related to turning. DVD's are preferred to VHS tapes. He needs blank DVD boxes for safe storage.

Mal reported that John Murphy could not make the meeting do to a bad muscle strain.

Members were asked to wear their name tags at meetings for convenience of new members.

An interesting woodturning web site was found: Turnedoutright.com and Youtube has many woodturning videos. The woodturning binder had an article on turning a wine glass with glass top and turned stem. Also FineWoodworking.com has a GlueTube Blog - Turn a bowl...with Sketchup.

Hank mentioned that we would have demonstrations after Show & Tell and wood swap in the future. He also said that ten birdhouses were contributed to Habitat at SSPlaza.

Ken asked for names of those planning to exhibit and or sell at the South Shore Art Center 3 Day Show in June.

A visit to the new baseball factory in Fall River will be arranged when they are available. The company is moving into new facilities and will have tours this summer.

Pinkerton Academy woodturning shows are every three years. The last one was in 2006, therefore the next one will be in 2009.

Ron reported that the Grizzly chucks are good and have indexing plate on back.

Janet Collins reported she is teaching at North Bennet Street School and making Curly Maple Chairs at her shop in Vermont.

Hand's On at Hanks is to be on Saturday, at 10am, May 17th.

Hand's On at Nigels will be held on July 12th.

Congratulations to Richard and Cheryl Friberg on the birth of their son.



Library



The Library has a good selection of periodicals and books thanks to the donations by members. A self service system will be used for distribution. The following procedures have been set up to keep track of the collection.

The Librarian has been authorized to spend \$25.00 per month for additions to the library. Members are requested to submit their suggestions for new books, magazines and videos.

Check Out

1. Sign and date control card found in book pocket
2. Place card in index box
3. If checking out a video:
Give \$2.00 rental fee to **Ron Robertson** or place money in index box

Return

1. Find control card in index box and cross off name
2. Replace card in book pocket

Member Challenge

Coffee Scoop

Choose from these projects:

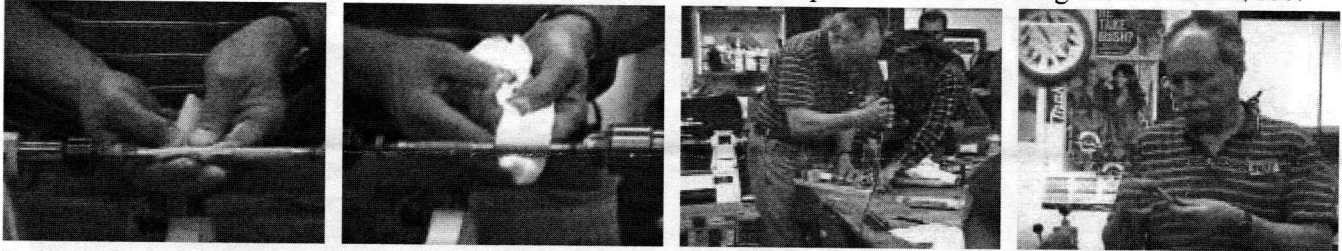
<http://www.woodturningonline.com/Turning/Projects/coffee-scoop.html>

Jeff Showed Us How To Make Pens

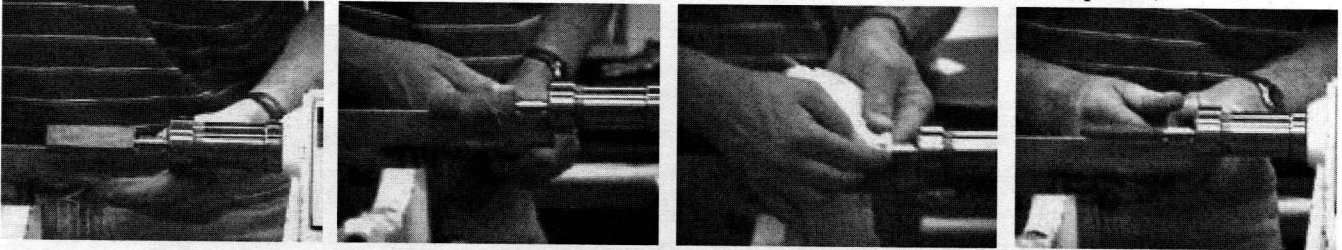
He started turning pens 10 years ago. They make great gifts or items for sale.



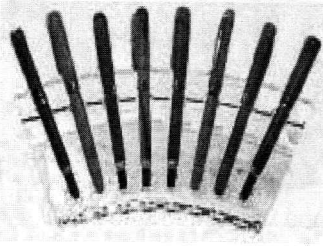
Low cost kits for the metal parts are available as well as wood and plastic blanks. Tooling can run about \$100.



Prepare blanks and mount onto a pen mandrel on the lathe. Turn to desired shape, sand, finish, polish, then assemble.



Using the Beall Collet Chuck to turn the pen blank



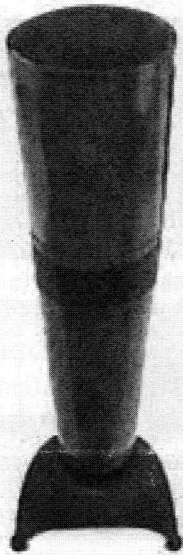
Completed pens in Acrylic stand, completed pen and some of Jeff's other style pens.



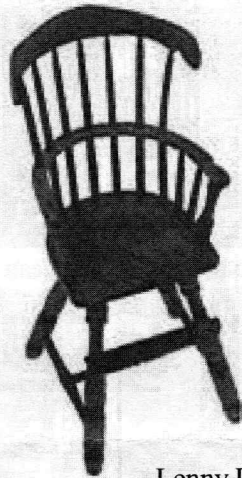
Photographs of Jae Ewart's North Bennet Street School pieces

Show & Tell

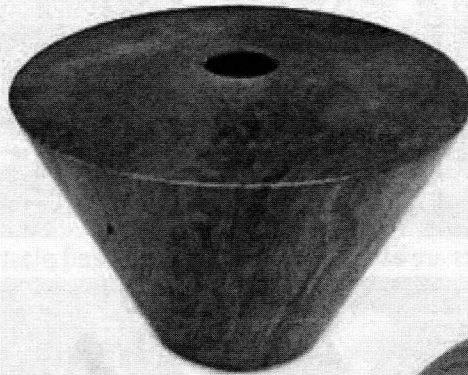
April 2008



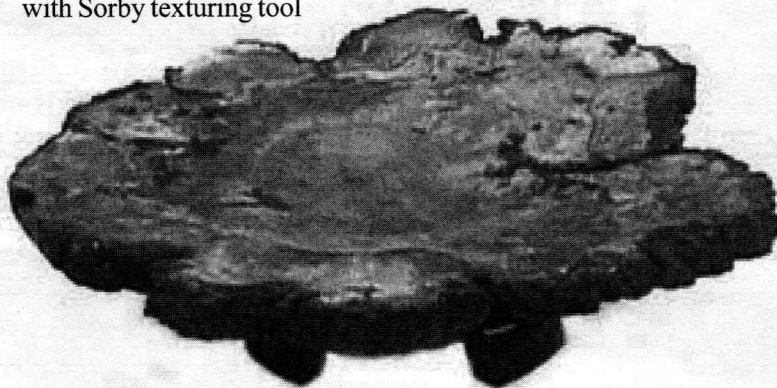
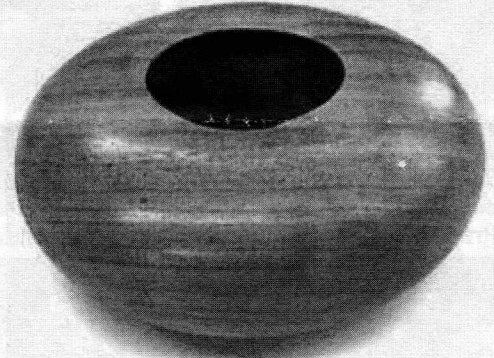
Andy's Crab Apple piece decorated with Sorby texturing tool



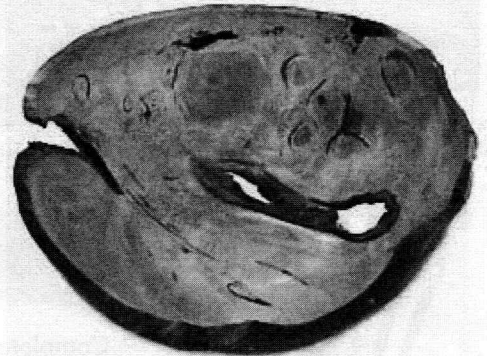
Lenny Langvin's miniature 2" to foot chair and Cherry Burl piece



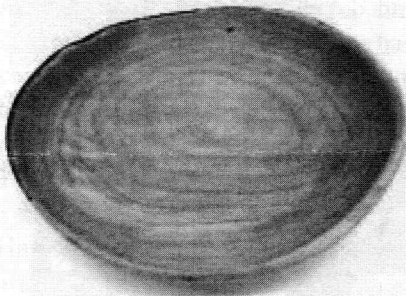
Richard Friberg's Australian Tasmanian Burl piece



Ken's Spalted White Oak thick piece with base



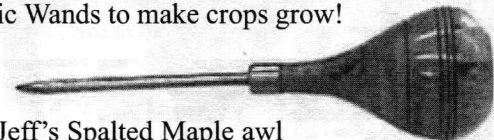
Ron's Cherry Burl bowl and Spalted Maple piece



Bob Iuliano's Walnut Magic Wands to make crops grow!



Paul's Maple bowl and small Ash Bat for Grandson



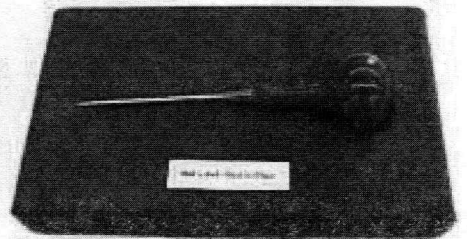
Jeff's Spalted Maple awl



Janet's Curly Maple small awl - blood red stain



Mike's Curly Maple reamer



Mal's Cherry awl