
AS THE WOOD TURNS

May 2009 Issue 143

A Segmented Evening



Jim Flannery



Ian Manley



Ron Robertson



Wayne Miller



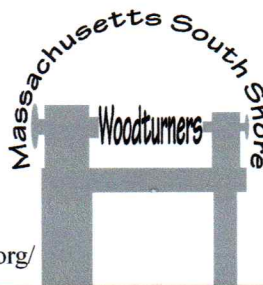
Nigel Howe



Wayne Miller

2009 MSSW Officers

President - Hank Cahill (781) 878-0234
Vice President - Richard Friberg (508) 378-2436
Treasurer - Wally Kemp (781) 826-6254
Secretary - Mal Partridge (781) 843-3883
Librarian - Ron Robertson (781) 545-8295
Newsletter - Mal Partridge (781) 843-3883
Web site: <http://msswt.org/> or <http://www.msswt.org/>



Next Meeting

Tuesday, May 26, 2009, 7:00 P.M.
At Hank Cahill's *Dust Bowl*
Refreshments by: Lenny Mandeville
Member Challenge: Offset Hollow Form
See Our Web Site for Details
Demonstration: John Destrampe

Meeting Minutes

The meeting was called to order at 7:00 pm at Hank Cahill's Dust Bowl

President's Report and General Business

Vice President Richard Friberg opened the meeting and informed the members that Hank was in the Hospital. A Get Well card was signed by the members to be forwarded to Hank.

It was requested that members leave a space for the Cahill's tenant in the upper parking area. Park across the street or in the lower parking area.

A guest, John Jordan, from Berkley was present.

Rich had some tools he received from NBSS that were donated and were put up for sale to members at the break.

Wally reported \$1333 in the treasury. He also mentioned that dues for 2009 are still due. A copy of Todd Hoyer's drawings that explains the relationship between Log and Bowl was shown. We will try to get permission to show on our web site. (Editor: It's there under Tips and Techniques with permission)

Bob Sutter reported on an exhibit at The Woodturning Center in Philadelphia called "Art of Opening: Bottles and Their Toppers". His piece "Corkscrew Brace" is on display with a selling price of \$500.



Jim Flannery received a Show Award at the Habitat for Humanity Bird House Show and Auction at the South Shore Plaza.

Mal reported that the Woodcraft Store in RI was offering a 20% discount on Jet and Powermatic products to May 16th. He also received a message from John Foster about a Woodturning Show in England.

Ken had a sign up sheet for members who want to exhibit, sell or demo at the South Shore Arts Festival in Cohasset June 19,20 and 21. There will be a fee to cover booth costs.

Ron the Librarian has added a Bandsaw Video to library and has purchased a flip chart for use during presentations. Mike Veno has supplied an easel and markers. DVD's are preferred for library and VHS tapes are being or have been converted.

Hand's on at Hanks was set for Saturday May 16th.

Webmaster Bob Trucchi reported that the web site links have been updated.

Bill Dooley reported on our exhibits at the Norwell and Hanover Libraries. There were about 85 pieces on display with only one sale at each exhibit.

Wally offered members to take two benches we do not use and are taking up space.

Nigel welcomed any member to come to his shop to learn segmented turning. His slideshow, created with help from Bob Trucchi, "The Creation of Vertical Evolution" was excellent and enjoyed by the members. It can be also seen on our web site.

Kevin Coughlin showed three nice pieces, but no photographs of them were available for publication.

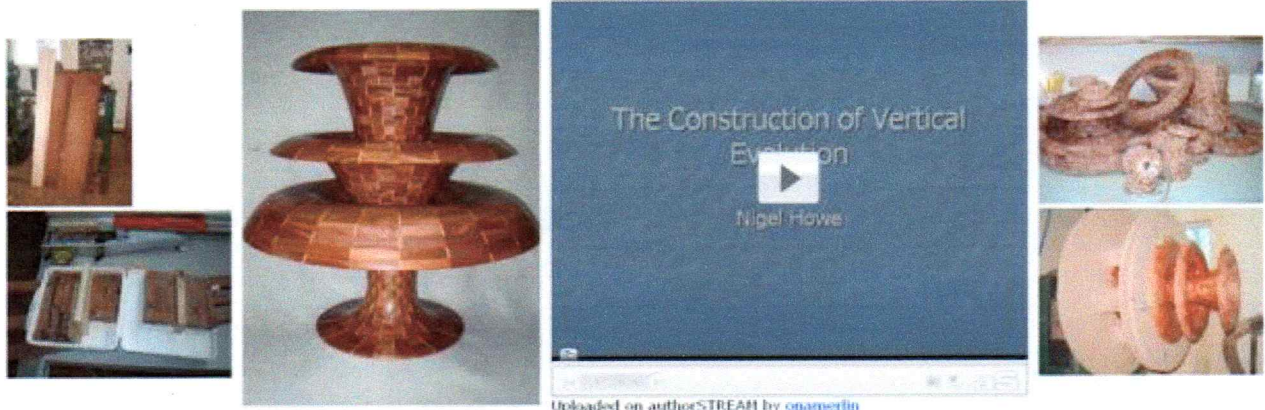


Wally's practice off center pieces

Nigel Howe Presents

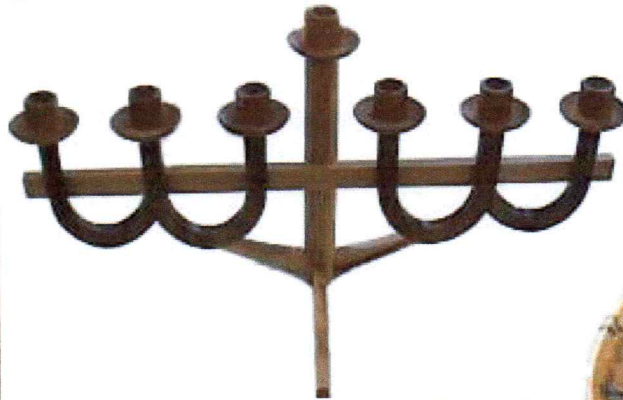
The Creation of Vertical Evolution

On Tuesday night April 28th Nigel presented a Powerpoint presentation of the creation of his segmented work Vertical Evolution. The presentation is here for all to view.



Visit our web site to view Nigel's great presentation

More Show & Tell



Bob Sutter's seven branched Candelabra from Cherry, English Oak and Red Oak



Ron's collaboration on sphere from Burchard demo



Ron's stave assembly mockup and lamination detail for segmented vase shown on cover



Ben Natale's Spalted Chestnut bowl and Yellow Birch plate

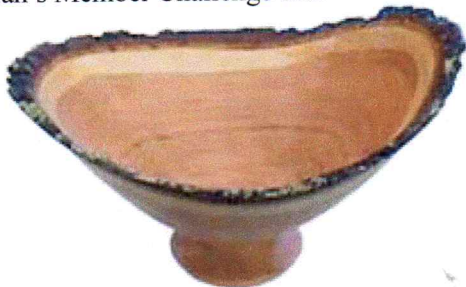
Show & Tell

April 2009



Wayne Miller's Cherry piece

Ian's Member Challenge box



Bill Dooley's Cherry bowl



Jim Flannery's Maple burl Vase



Bernie's Yew family hollow form



Bob Trucchi's Apple bowl & Cherry crotch plate



Jeff's Orange Alabaster bowl with Bloodwood rim



Steve Wiseman's Wood flowers and vase



Ken's ebonized Elm bowl with carved details filled with acrylic paint and ebonized White Oak piece