

---

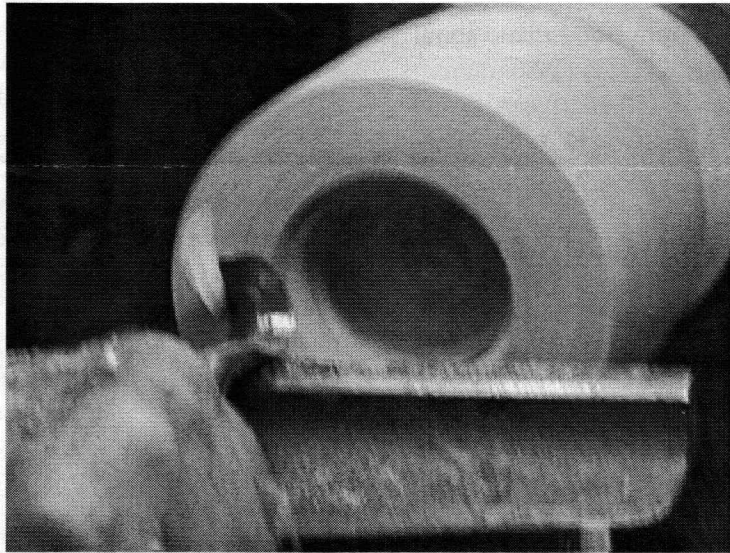
# AS THE WOOD TURNS

---

November 2000

---

## Hooked on Turning II



Wally tries hook tool as members join guests in turning using various hollowing tools and techniques



Emilio turns as Felix watches



Jesse explains a technique to Wally  
Roger does same to Paul



Richard Friberg prepares blank

### 2000 MSSW Officers

**President** - Hank Cahill (781) 878-0234  
**Vice President** - Felix Troiano (781) 749-1713  
**Treasurer** - Wally Kemp (781) 871-1390  
**Secretary** - Mal Partridge (781) 843-3883  
**Librarian** - John Murphy (781) 834-1179  
**Newsletter** - Mal Partridge (781) 843-3883



### Next Meeting

Tuesday, November 28th, 2000  
7:00 P.M.

At Hank Cahill's *Dust Bowl*  
Refreshments by: John Shooshan  
Member Challenge: Lemon juicer  
Demonstration: Members turn thin plates

## Meeting Minutes

The October meeting was called to order at 7:15 at Hank Cahill's Dust Bowl

### President's Report

**Hank** introduced four guests from a Plymouth Woodworking group: Bill George, Charles Stasinos, Leno Atti and Ed Greene.

Correspondence was received from Bob Iuliano about his trip to the arctic in Finland and visits to woodturners. Craft Supplies is again offering \$150 in gift certificates and we have selected 15-\$10 certificates. A box of catalogs was received and distributed to members. A letter from Norm Hinman, AAW, requested members to renew early and to sign up new members. AAW now has 8651 members and 154 chapters.

Treasurer **Wally Kemp** reported \$612 in treasury.

Librarian **John Murphy** reported one book out by Dave Hutchins. A video is missing - *Turn a Basic Box by Ray Key* - please return. A copy of *Lindsay's Technical Books catalog* was given to the library. It contains many interesting books from the past, republished by *Lindsay*, as well as current publications.

**Hank** congratulated **Ernie** for his great effort at Audubon's Farm Day teaching the children (future woodturners) with his tradle lathe. **Wally's** colorful tops were a favorite with the kids. A great day!

Members were reminded to turn plenty of items for our South Shore Audubon exhibit. Xmas sales should be good this year. **Art Vandam** has pieces on display. We have not seen him at meetings but are glad to see he is still an active turner. Copies of our *wood glossary* were given to **Hank** for distribution at the exhibit as well as tent cards for members. It was agreed that we should have 1000 tent cards printed for future use. **Jeff** and **Mal** will obtain quotes.

Our first meeting was held November 23, 1996, so our November 2000 meeting will be our **4th Anniversary**. We have been an AAW Chapter since February 2nd, 1997.

**Hank** showed pictures of Daniel Webster Farm Day and the New England Wood Carvers Exhibition.

## General Business

The Art Complex Museum, Duxbury, MA, is featuring *Shaker Chairs: Their Story* Sept 24 - Jan 14, 2001.

Another Wallywood day is coming! Be prepared.

A video camera is needed for the upcoming demo by Jacques Vesery on Saturday the 13th of January.

**Richard Friberg** volunteered to supply one.

**John Murphy** mentioned that 30-40 trees will be coming down in Duxbury. Oak, Pine, Maple, Linden, etc. Contact tree warden Dick Buttkus for information.

**Ernie** mentioned that the Mariner newspaper took photos at farm day and would members check to see if they are published in their area.

**Wally & Mal** purchased many sheets of vinyl sign material at Farm Day for 50 cents and have made a good supply available for other members. This is an adhesive backed material - how can it best be used?

### Gnome Rotary Engine News

A quote for to insure the Gnome for \$5000 at a yearly rate of \$150 with a \$250 deductible, was obtained by **Dave Hutchins** and presented for acceptance. When the Gnome is loaned to various museums it was felt that they would have insurance covering their contents and therefore we do not have to obtain insurance at this time. **Mal** is taking good care of it during it's travels and as it can be completely disassembled it can be easily repaired if damaged. Depot spares are on hand!

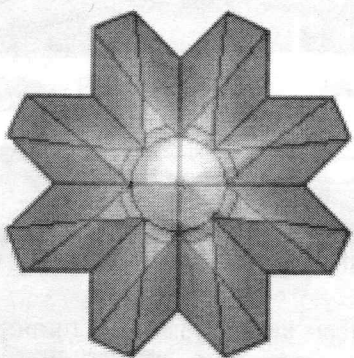
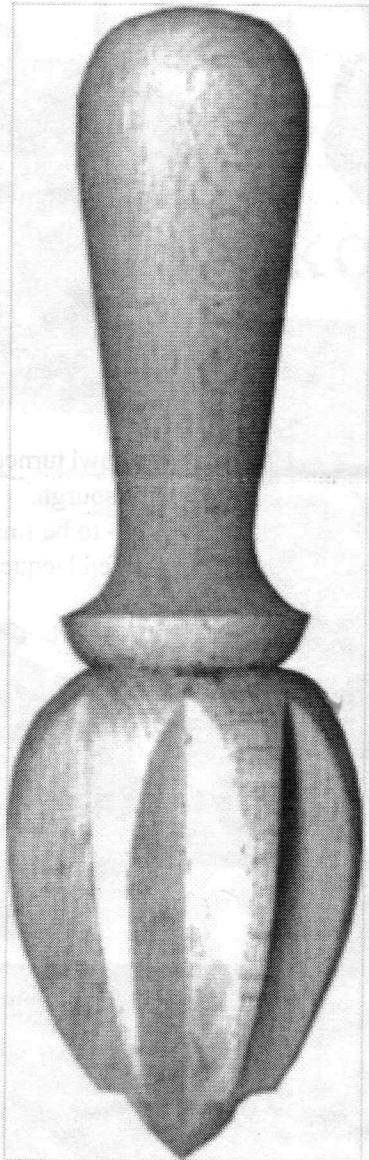
A 50 slide overhead projection show to demonstrate how the Gnome engine was fabricated is now being used by **Mal** for his lectures. To date there have been 10 well received demonstrations in four states.

Many Aviation Museums want kits or assembled demonstration models of the rotary engine simulator to demonstrate it's operation to students and visitors, as shown on the back of our Gnome engine brochure.

If any members know of any woodturning, woodworking or aviation related organization who would like to see a demonstration of our 1/2 size wooden replica of the famous 50HP Gnome rotary engine please have them contact **Mal** at 781-843-3883 or malp@beld.net.

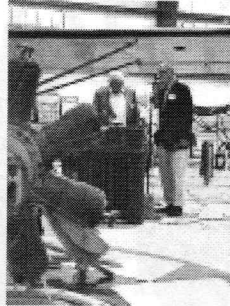


# This months member challenge



## Lemon Juicer

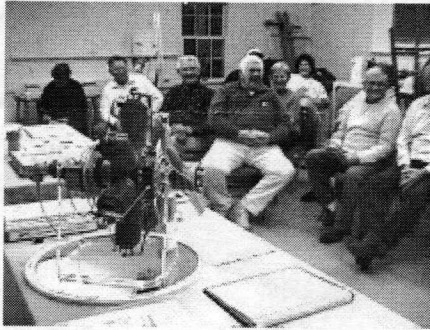
### 50HP Gnome Rotary Engine Demos



Peter Wright  
Flying Tiger



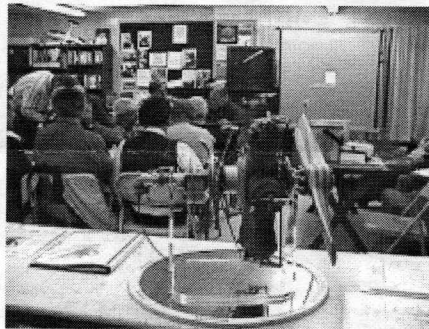
Rhinebeck Aerodrome, NY  
Next to actual Gnome engine



Cape Cod  
Woodturners  
Chatham, MA



New England  
Model Engineering  
Society  
Waltham, MA  
80 members  
present



EAA Chapter 279  
Cranland Airport,  
Hanson, MA



Aviation Heritage  
Festival  
Nasua, NH

Flightline Tailgate  
Demonstration

# October 2000 Show & Tell



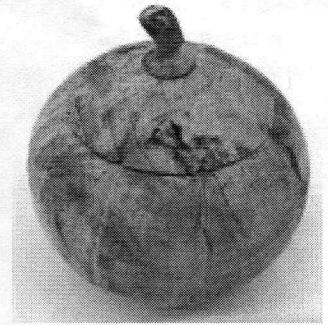
Jeffrey Keller's Maple Wallywood Burl



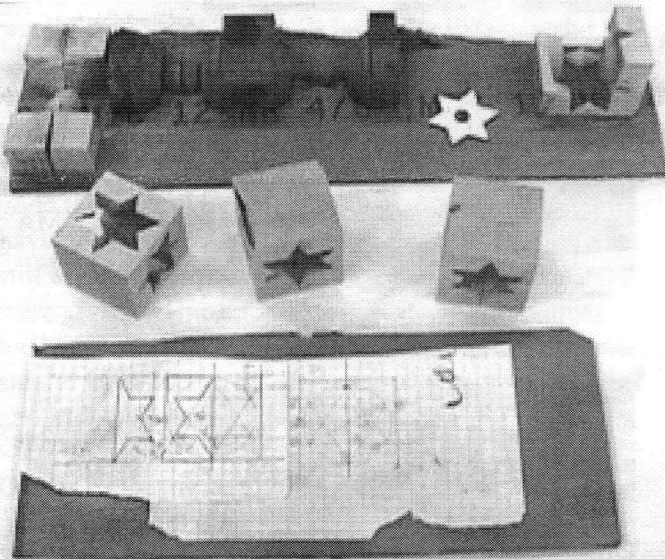
Wally Kemp's Red Maple Burl Vase



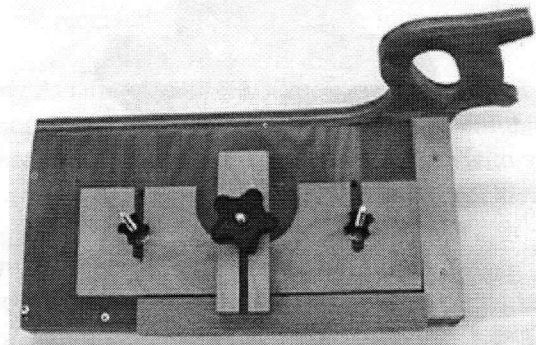
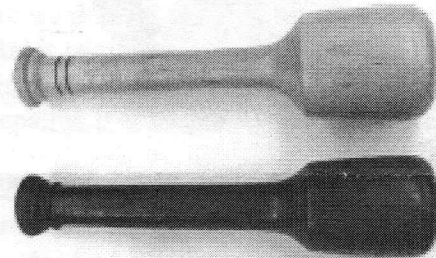
Hank Cahill's bowl turned from wood obtained at Pittsburgh, NH wood pile alone a river - to be finished with buffed lacquer



Richard Friberg's maple dish, ash bowl, melon box from Woodturner Magazine, and two challenge mallets



Wally Kemp demonstrated technique for turning ornaments starting with 4 segments glued with brown paper between, seperated after turning and reglued to form decorative ornament - not easy!



Ernie Grimes demonstrated jig to cut staves for bird houses - used duct tape to glue & roll up