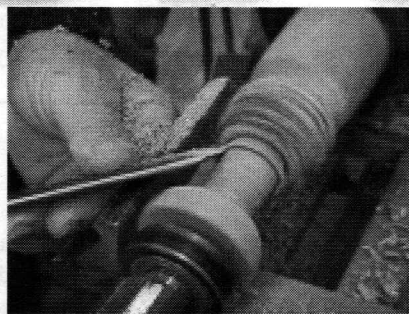
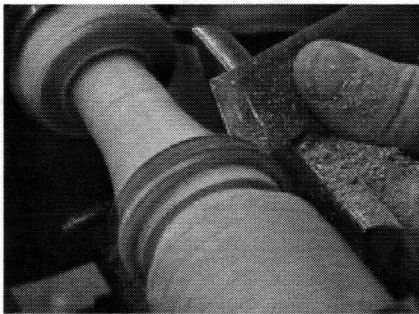
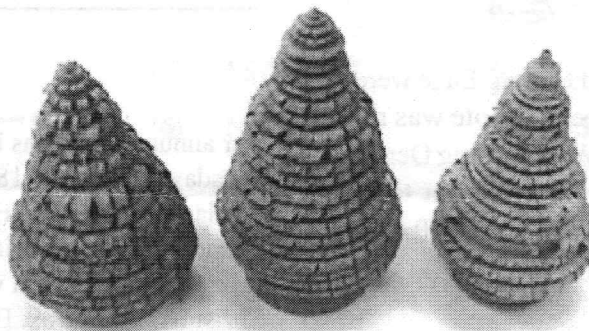
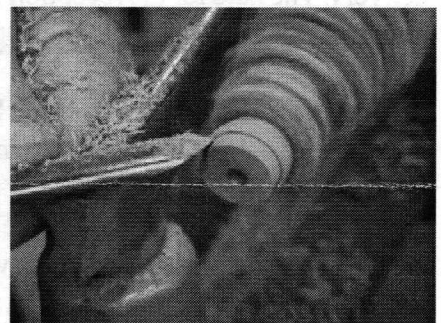
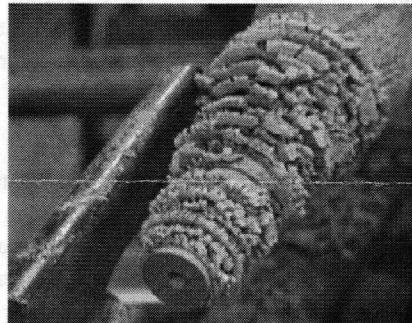
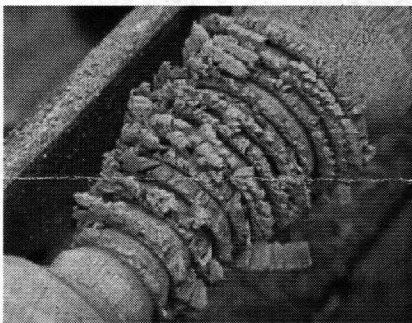

AS THE WOOD TURNS

November 2001

Emilio's Tree Farm



Mount the dry stock (Emilio used butternut) in a chuck with tailstock support and rough the cone shape. Start peeling with the tip (point) of the skew, then part off the tailstock end and complete the tree top



If you left the meeting early you missed Emilio's impromptu tree forming demonstration.

2001 MSSW Officers

President - Hank Cahill (781) 878-0234
Vice President - Felix Troiano (781) 749-1713
Treasurer - Wally Kemp (781) 871-1390
Secretary - Mal Partridge (781) 843-3883
Librarian - John Murphy (781) 834-1179
Newsletter - Mal Partridge (781) 843-3883



Next Meeting

Tuesday, November 27th, 2001, 7:00 P.M.
At Hank Cahill's *Dust Bowl*
Refreshments by: Paul Marks
Member Challenge: Spindle sampler
See page 3 of newsletter
Demonstration: TBD

Meeting Minutes

The meeting was called to order at 7:05 pm at Hank Cahill's Dust Bowl

President's Report and General Business

Hank introduced guests **Andy Osborne**, referred by **Charlie Rosen**, and **Ron Robertson**. Both have become MSSW members.

Catalogs from Craft Supplies and Cutting Edge were received and distributed to members. A note was read from CNEW that announced a Woodturning Demonstration, featuring Phil Brennon from Arizona, to be held Sunday, October 28th at Worcester Craft Center. A contribution of \$20 is required.

Treasurer **Wally Kemp** reported \$743 in treasury minus newsletter expenses for July - October of \$150.80 submitted by **Mal**.

Librarian **John Murphy** reported 4 books and 4 videos checked out. Our new members are taking advantage of our excellent library.

Signs for our Audubon exhibit were made by **Mal** at **Ellyn Einhorn's** request and given to **Hank** for delivery. The date for the reception was changed from Saturday, November 3rd. to the 10th.

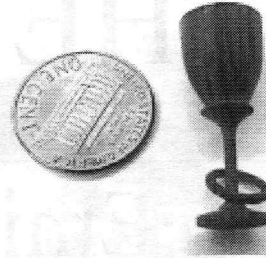
Mal reported that a Woodworking Show will be held November 16-18 at the Rhode Island Convention Center and the AAW meeting for local volunteers at the RI 2002 Symposium is to be held October 27th, 1-3pm at the Biltmore Hotel in Providence, RI. The Water Fire Show starts at sundown the same evening.

Delta has a new 16" lathe and it is on display at Woodcraft, Woburn. Selling price \$1899.99.

The AAW 2002 collaborative challenge project was discussed and **Mal** supplied pictures and drawings of the project suggested by **Hank, Wally** and **Rich**.

We now have 36 members and a membership list is available upon request.

Hank showed a turning from a CNEW meeting held at his shop in the mid 1980's.



Notice

Our annual Christmas Party will be held at 7 pm on Tuesday, December 18th, **one week earlier** than our regular meeting date. Bring a pot luck refreshment, and a hand made gift, turning preferred, in a bag with a long string for each person who wants to participate in the Christmas Grab Box. Bring your spouse or friend to meet other members and share the evening with us. Come and enjoy the party - no formal meeting!



Library



The Library has a good selection of periodicals and books thanks to the donations by members. A self service system will be used for distribution. The following procedures have been set up to keep track of the collection.

The Librarian has been authorized to spend \$25.00 per month for additions to the library. Members are requested to submit their suggestions for new books, magazines and videos.

Check Out

1. Sign and date control card found in book pocket
2. Place card in index box
3. If checking out a video:
Give \$2.00 rental fee to **John Murphy** or place money in index box

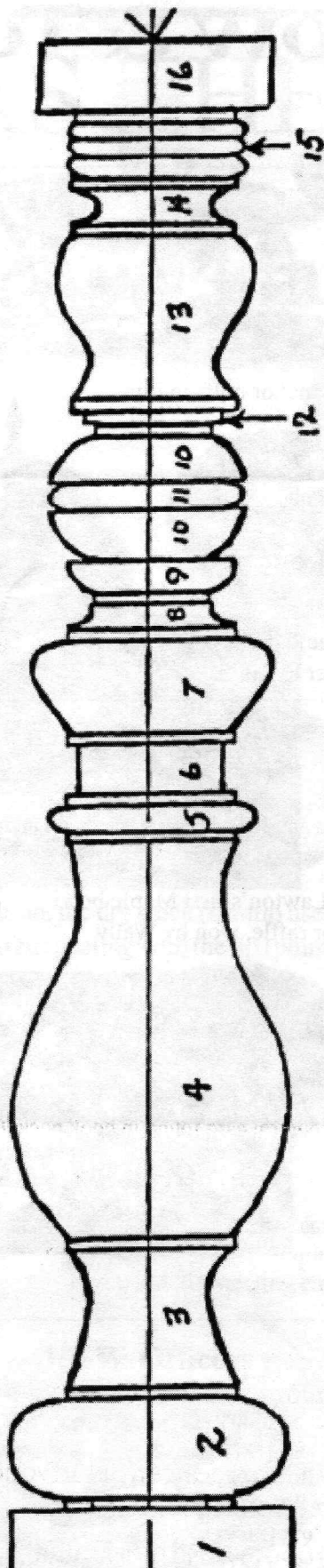
Return

1. Find control card in index box and cross off name
2. Replace card in book pocket

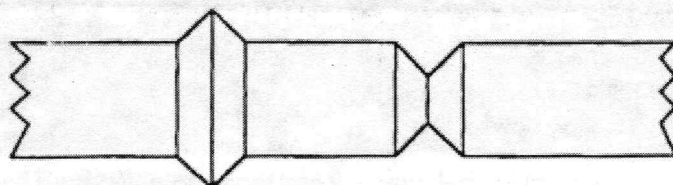
Welcome New Members

Andrew Osborne from Norwood
&
Ron Robertson from Scituate

SPINDLEOLOGY



- | | |
|--------------|---|
| (1) PLINTH | Straight Sided Base |
| (2) TORUS | Large Semi-Circular Shape |
| (3) SCOTIA | Sunk-in Ovod |
| (4) OGEE | "S" Shape Usually Asymmetrical
(Large Bulge Below is Ogee (Cyma-Recta) |
| (5) ASTRAGAL | Semi-Circular Form (Smaller than a Torus) |
| (6) NECK | Straight Section in upper Area |
| (7) OVOLO | Protruding Segment of an ellipse |
| (8) QUARTER | Hollow |
| (9) QUARTER | Round |
| (10) BALL | Can Be Elongated into an ellipse |
| (9-10) QUIRK | Transition Between Elements 9 & 10 |
| (9-10) FLAT | End Of Quarter Round |
| (11) BEAD | Bead Is Cut Into Surface
(Astragal Protrudes Above) |
| (12) FILLETS | 3 Stair Stepped In Reverse |
| (13) OGEE | Large Bulge Above
(Ogee, Cyma-Reversa) |
| (14) CAVETTO | (Cove) Semi-Circular Hollow |
| (15) REED | Uniform Series Of Beads. 3 or More |
| (16) ABACUS | Straight Sided Section At Top |



"V" Positive Or Negative

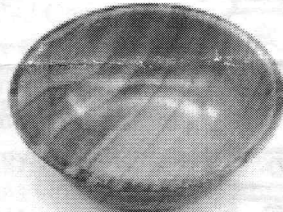
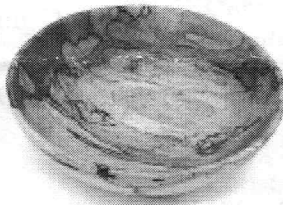
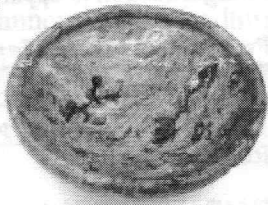
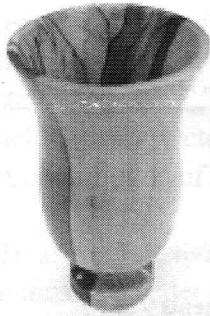
Things you should know about a spindle, but were afraid to ask!

October 2001

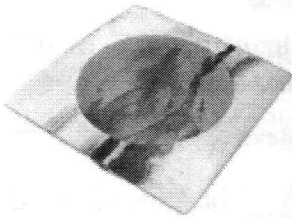
Show & Tell



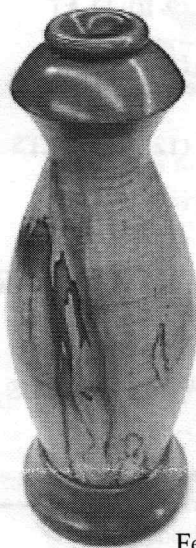
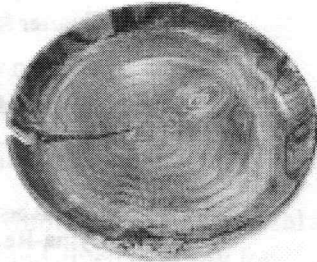
Hank's 5 section branch walking stick uses T nuts and anchor bolts to join



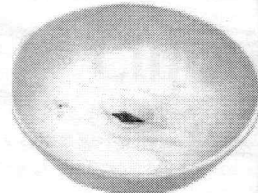
Spalted maple vase, 2 bowls, Paulonia (Empress tree) bowl, and Spalted maple box with Bubinga and Ebony cover by Hank



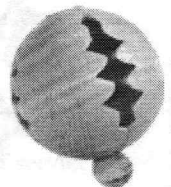
Andy Osborne's square Apple bowl and white oak plate



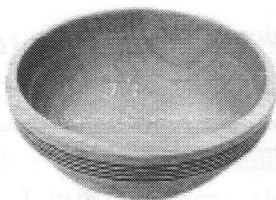
Felix's Wallywood vase with Cherry top and base



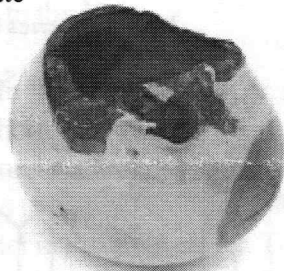
Greg Lawton's first Maple bowl for raffle, won by Wally



Jeff's ornament



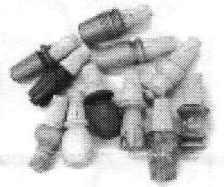
Emilio's Cherry bowl



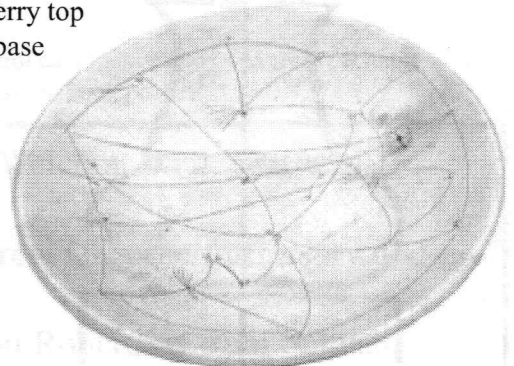
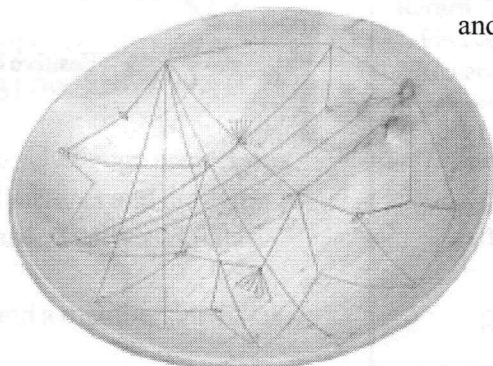
Wally's Apple bowl



Rich Friberg's Maple burl bowl and stoppers



Wally became frustrated with the ornament challenge. Are "Collisions" the result?



Wally decorated his large bleached Maple bowls called "Collisions" (Designs open to interpretation)