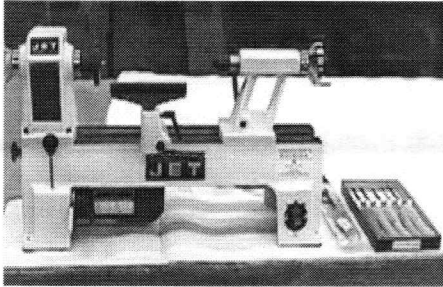
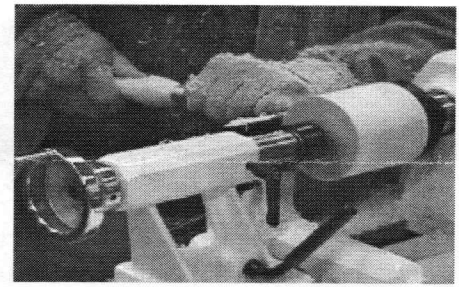

AS THE WOOD TURNS

November 2002

Members Take Turns Turning



Our new Jet lathe donated by Rocklers with tools a gift from Woodworkers Warehouse



Leonard Mandeville christens the Jet Mini-lathe



Ron Robertson and Philip Todd produce a bowl on our Delta lathe donated by Beaver Woodworking

2002 MSSW Officers

President - Hank Cahill (781) 878-0234
Vice President - Felix Troiano (781) 749-1713
Treasurer - Wally Kemp (781) 871-1390
Secretary - Mal Partridge (781) 843-3883
Librarian - John Murphy (781) 834-1179
Newsletter - Mal Partridge (781) 843-3883



Next Meeting

Tuesday, November 26th, 2002
7:00 P.M.

At Hank Cahill's *Dust Bowl*
Refreshments by: Sidney Katz

Member Challenge: Decorated napkin ring/s
Demonstration: TBD

Meeting Minutes

The meeting was called to order at 7:00 pm at Hank Cahill's Dust Bowl

President's Report and General Business

Hank introduced visitors Michael Veno from Brockton, Charlie Rosen, our webmaster, and Kimberly Russo, who attends North Bennet Street School.

A newsletter was received from a turning group in England. Beaver Woodworking Supplies in Brockton is now featuring General Lathes. The Woodworks 2002 show will be held at the Worcester's Centrum Centre on December 6, 7, & 8, 2002.

North Bennet Street School is having an open house on November 2nd & 3rd, 2002 from 10 am to 2 pm. A box of catalogs was received from Craft Supplies and Hank prompted members to "Take Two". He will also follow up on \$150 gift certificate from them.

A visit to the Old Schwamb Mill in Arlington is being arranged and **Hank** will contact interested members when set up. Editors note: The visit was set up for Saturday, November 16th, 11-3.

Hank requested a newsletter be sent to Windsor chairmaker Robert Francis in Bryantville, MA.

Mal brought in a Jet Mini Lathe donated to our group by Doug LaRocque, Sales Manager of Rockler Woodworking and Hardware, Cambridge, MA. A letter of thanks was sent to Doug. He was informed we would be happy to demonstrate at the store and display the Collaborative Challenge projects and other turnings by our members. **Mal** used the Gift Certificate from Woodworkers Warehouse, Avon, to purchase a set of Sorby mini tools for use with the lathe.

Tent cards for the Audubon exhibit were available. A discussion ensued about "Pricing to sell" with varied opinions.

Members who would like to receive the newsletter by E-Mail were asked to sign up. The newsletter is sent as an Acrobat file so it can be viewed exactly as produced and in color. The Acrobat Reader needed to view the file is available free from the Adobe.com web site.

Mal gave a folder of MSSW pictures to John Murphy for a presentation to Fuller Craft Museum. A folder with data on treadle lathes from the internet was given to Ernie and a folder with treadle lathe information was made available for member review.

Drawings for a full size wooden replica of our Gnome Rotary Engine were sent to the Canadian Aircraft Heritage Center. They will be distributing the drawings to volunteer Canadian woodturners for fabrication. The engine will be used for the static display of their Bleriot aircraft. An operational engine will be used for flying. The Center's web site is http://www.caac-ccpa.com/main_eng.htm. **Mal** also has drawings available on CD.

Andi Wolfe has some great pictures in his AAW 2002 Photo Album on his web site: <http://www.biosci.ohio-state.edu/~awolfe/COW/wolfe.html>. **Angelo's** work is shown.

Treasurer **Wally** reported \$1226 in the treasury. He also mentioned an artists open house on Plain street, Rt.139, Rockland, MA 4th floor on November 23rd & 24th. Check with him for details. Also the Fuller Museum Lecture series on January 18th, 2003, 1pm, "Woman Furniture Makers an Historical Perspective" Ned Cook lecturer, was recommended.

Wally tried to set up a bus trip to the woodturning exhibit at Yale in New Haven, CT, but there was no interest. It ends the 1st of December.

Librarian **John Murphy** reported 7 books and 7 videos checked out. He is fabricating a storage cabinet with doors for the library and will bring it to the November meeting. He also reported that the Fuller Museum is booked through 2003 but he will try to get our group, or perhaps all area woodturning clubs represented in some way, perhaps as a smaller exhibit to supplement the larger ones.

Hank and other 2002 officers with the exception of Librarian agreed to accept nomination to run for 2003. Lenny Mandeville volunteered as Librarian.

Wally's chair was well received at the Chair Show in Worcester. Sam Maloof's lecture with slides was well received.

Members are welcome to come to meeting early to use our lathes and get help if needed between 6 & 7 pm.

Hank had arranged for Jim Taralli to be demonstrating at our November meeting, but Jim called and said he couldn't make it at this time.

Our annual **Christmas party** will be held on **Tuesday, December 17th**. There will be no December meeting. Bring a pot luck refreshment item and a grab bag gift which is "something you made"- not a purchased item! Put it in a bag with a long string for the grab box.

No word yet on **Angelo's** election to the AAW board.

Charlie Rosen is working with **Mal** to bring our web site up to date.

Members suggested we get more chairs to accommodate the growing number of members and guests at the meetings. We had 32 present at the October meeting.

Dave Hutchins suggested a wood work party to go to a log pile of walnut, cherry and maple at the Forest Hill Cemetery. **Hank** will notify those interested of time/date.

Lenny Langvin will supply a piece of Lexan for a safety shield.

A wood raffle was held with a good assortment to choose from.

Mal has had an acrylic case made for the Rhode Island Capitol Dome. It is now on display at the South Shore Audubon Headquarters in Marshfield along with the exhibit of turnings by our members through December 14th. (Removal day)

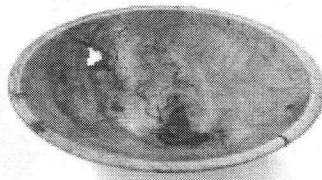
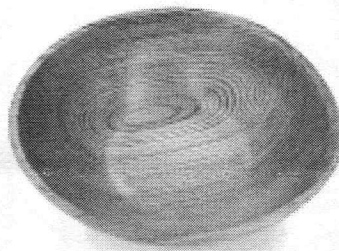
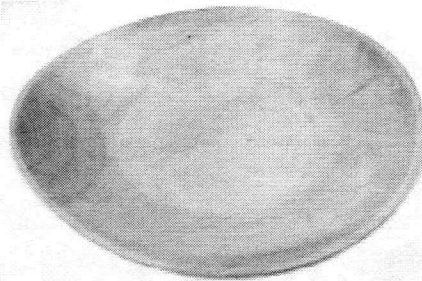
The Putney Craft Tour is being held November 29 & 30, 2002 in Putney, Vermont. Check out their web site: www.putneycrafts.com for more information.

For Sale

Wally has 3 gallons of Anchor Seal for sale at \$9.50 per gallon. You must bring your own clean container.

Welcome New Member
Kimberly Russo from Kingston

More Show & Tell



Mystery pieces

Write your name and description under each piece if yours!

Note: The editor takes no responsibility for errors in matching pictures of pieces and turner in Show & Tell. If a mistake has been made - cross out the incorrect entry and write in your recollection of who made what!

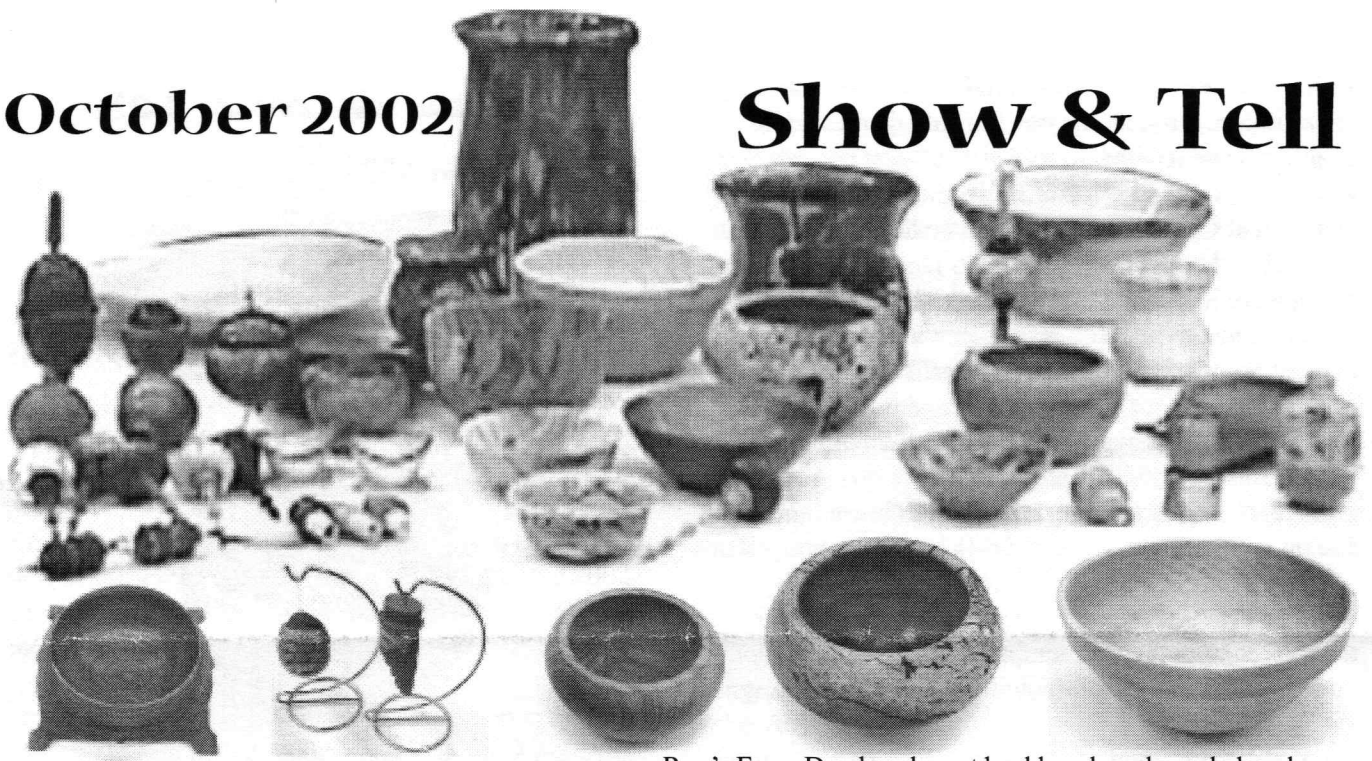
Member President's Challenge Decorated Napkin Ring/s

Be innovative about your decorating.

They make great Christmas presents, so set up a production line and turn, turn, turn!

October 2002

Show & Tell

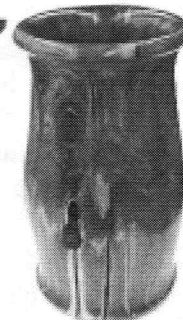
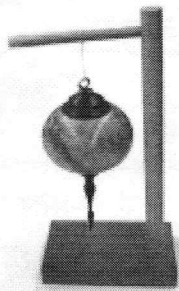
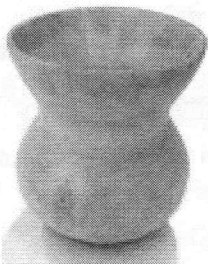


Hank's square bowl and carved ornaments

Ron's Farm Day bowl, root burl bowl, and maple bowl

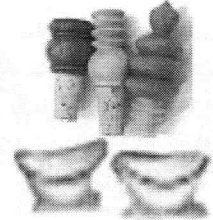
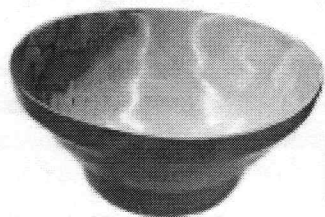


Jim Flannery's nice box



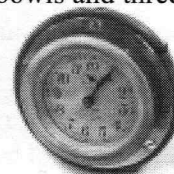
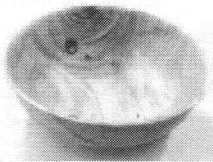
Jeff's cottonwood vase, ornament, rosewood letter opener, and red cedar vases

Wally's collet chuck with spindle adapter



Ken's Buckeye burl and big wet wood bowl turned w/Andy

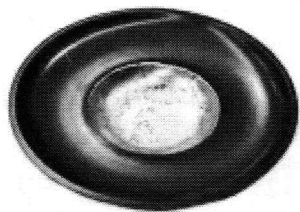
Andy's cherry burl bowl, oak bowl, two mulberry bowls and three stoppers



Sid's Linden and Elm bowls

Emilio's cherry burl jar & coconut ornament

Lenny Langvin's five fruitwood ornament, pear clock case, pumpkin & walnut ball w/rings



John's cherry bowl painted with red automotive lacquer & gold gilding



Kris's turnings for center of tables & small birdhouses

Angelo's ornaments by other turners & ball boxes for magic trick