

AS THE WOOD TURNS

November 2004

Ken Sets the Spirit Free With a Lot of Help From Betty Scarpino

Explore The Possibilities



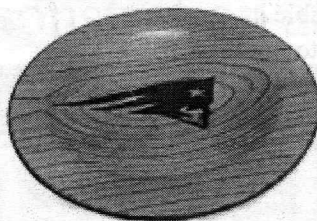
Torch



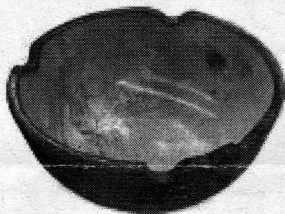
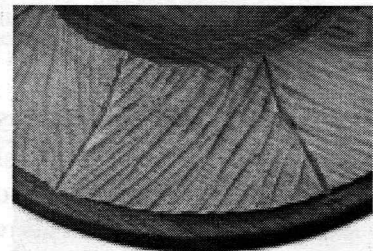
Carve



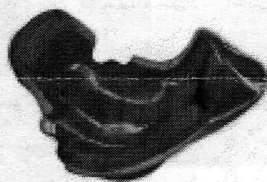
Turn



Cut



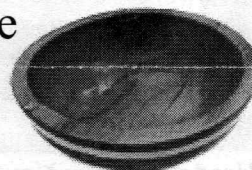
Lye Treatment



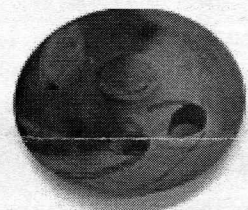
Paint

Decorate

Inlay



Bleach



Imagination

Go to this site to see a Betty Scarpino Workshop:

<http://www.rochesterwoodworkers.org/scarpinowksp/scarpinowksp1.htm>

2004 MSSW Officers

President - Hank Cahill (781) 878-0234
Vice President - Felix Troiano (781) 749-1713
Treasurer - Wally Kemp (781) 871-1390
Secretary - Mal Partridge (781) 843-3883
Librarian - Leonard Mandeville (508-586-7679)
Newsletter - Mal Partridge (781) 843-3883
Web site: <http://www.mssw.sitelinker.org/>



Next Meeting

Tuesday, November 23, 2004, 7:00 P.M.
At Hank Cahill's *Dust Bowl*
Refreshments by: Bernie Feinerman
Member Challenge: Christmas Bulb Ornaments
See Fall 2004 American Woodturner, page 39
Demonstrators: Jean LeGwin and Mike Veno

Meeting Minutes

The meeting was called to order at 7:00 pm at Hank Cahill's Dust Bowl

President's Report and General Business

Dick Voss was recognized as a visitor and has become a member.

Hank received an E-Mail from John Hill about the availability of Irene Gafert, from Denmark, for demonstrating at \$500/day. Beth Ireland was suggested as a future demonstrator. Hank will check Beth's availability.

A reminder from Hank that the Lyle Jamieson demonstration hosted by the Ocean Woodturners in Rhode Island will be held November 6th. \$10 Fee includes lunch. Also Lyle will be at Angelo's shop for individual instructions for four participants at \$100 each on November 7th. Check with Angelo or Emilio if you are interested.

A Craft Supplies \$15 gift check was received.

Bob Francis mentioned the Fine Furnishings show to be held in Providence, November 5-7, 2004.

Treasurer Wally Kemp reported \$1503 available in treasury to be consumed. (Hank asked Mal to purchase two chucks for our lathes. He has done so and two New Supernova 2 chucks will be available at our November meeting.)

Lenny the Librarian reported all's well. Our new members are utilizing the library for videos and books.

Our Marshfield Audubon art exhibit will be held from November 6 to December 11. Tent cards for turnings will be available at Audubon Headquarters on November 4th.

Our visit to Schwamb Mill will be postponed until next year, per Hank, who has been playing phone tag with them. In the meantime check out their web site for a virtual walk through the Mill:
<http://www.oldschwambmill.org/home.html>

Ken reported the sale of a \$450 piece at the Cohasset Art Center and \$500 in sales at the Mansfield Craft Show.

Wally visited the Fuller Craft Museum to attend a furniture exhibit and talked to Dawn Low, Education Director, about our exhibiting our members works. They could be displayed in the corridors for \$15 per piece. The possibility of holding woodturning classes was also discussed.

Mal had copies of Woodworkers Journal magazine, with Jean LeGwin's turning article, available for anyone who could not find them on local newsstands.

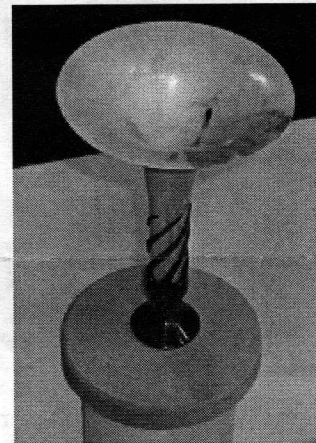
Jesse Meyer reported \$1300 in sales during a two day craft show at the local clubhouse. A cracked bowl repaired with a shoelace sold for \$75!

The Association of Revolutionary Woodturners members reported \$5000 in sales over 11 days of the Topsfield Fair.

The reporting of sales for their turnings brought up the subject of collecting sales tax at shows and fairs. This resulted in a lengthy but informative discussion amongst the members. Hank thought it was interesting, Mal thought it was taxing!

Peter Teubel brought in wood from two trees and Bob Sutter a bag of Brazilian Rosewood pieces for the wood swap.

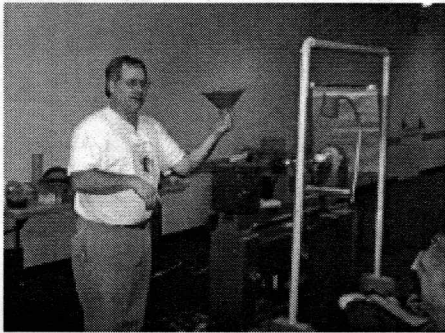
Seen at Totally Turning Instant Gallery



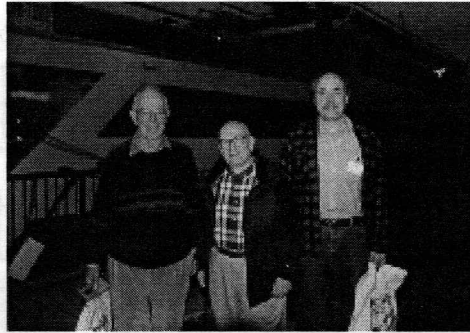
Twisted stem with flared opening
Box elder and Cocobolo by Russ Fisher

Welcome New Member
Richard Vose
from No. Billerica

Totally Turning 2004



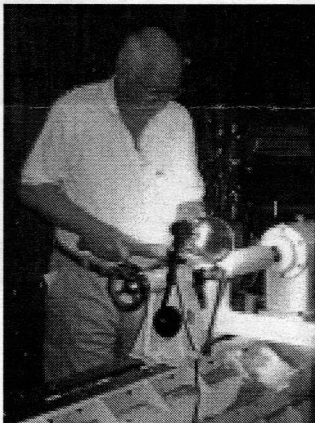
Brad Vietje - Basic Bowls



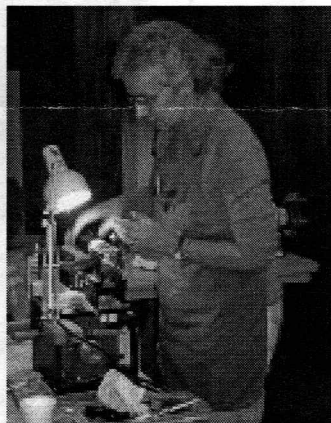
Wally, Sidney & Jeff - all smiles!



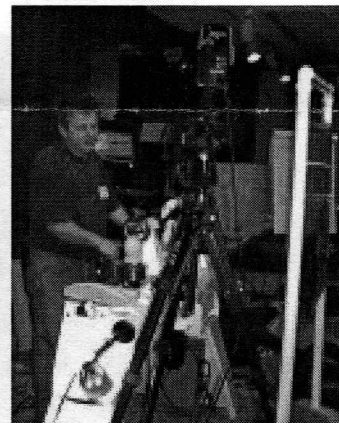
Segmented turnings-Instant Gallery



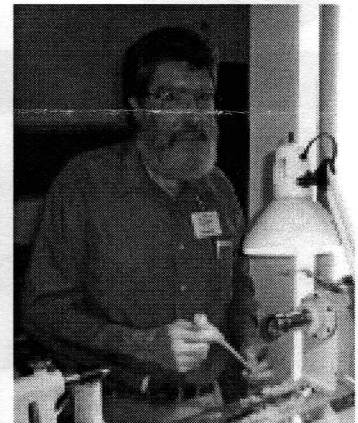
Russ Fairfield -Spindles



Bonnie Klein - Threaded box



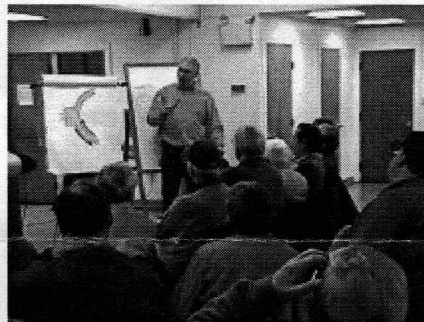
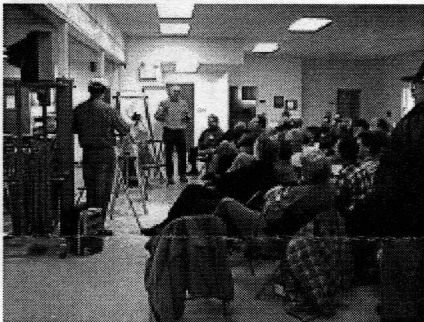
Michael Hosaluk - Design



Richard Montague - Batons

Photos by Jeff Keller

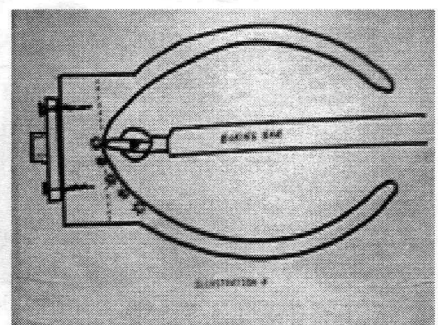
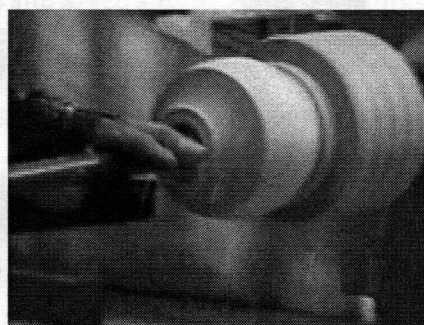
Lyle Jamieson Demonstration at Ocean Woodturners



There were 10 MSSW members who took advantage of a \$10 informative demonstration which included lunch!



Lyle showed how to set up and use his hollow form turning system

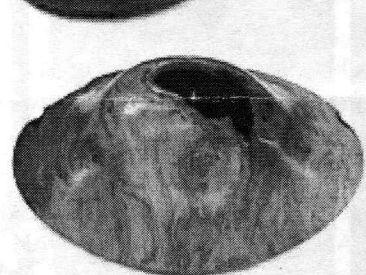
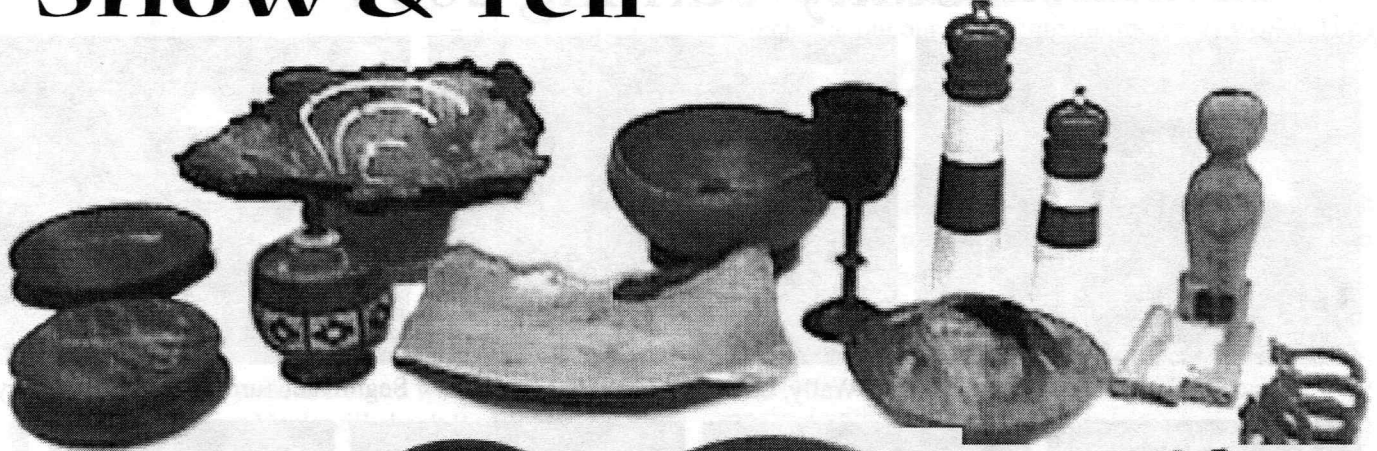


He covered the subject in depth

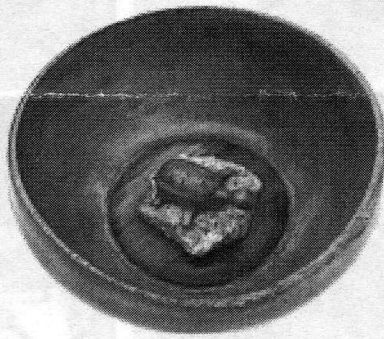
To see what you missed check out Lyle's web site: <http://www.lylejamieson.com/>

Show & Tell

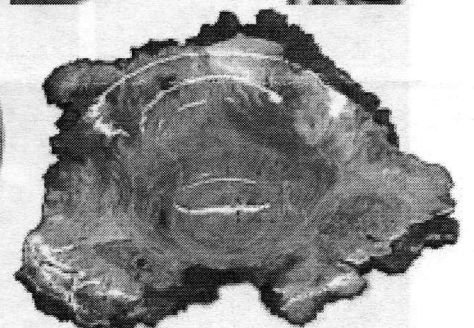
October 2004



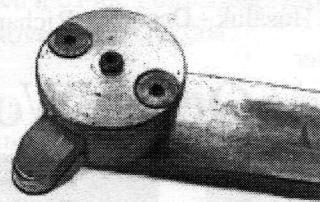
Wally's cherry burl piece



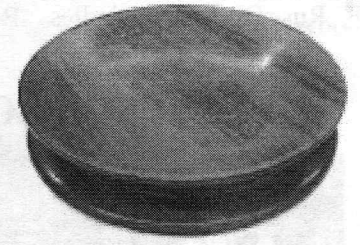
Bob Sutter's rosewood goblet and oak bowl- note frog



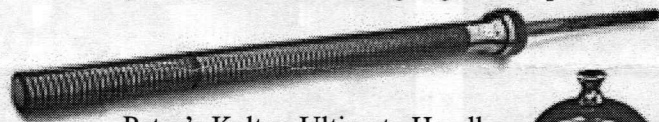
Ken's end grain burl turning



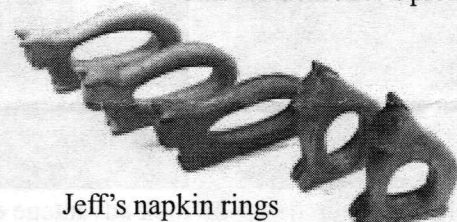
Harold Dyke's 150 piece segmented container and dig free tool for hollowing segmented pieces



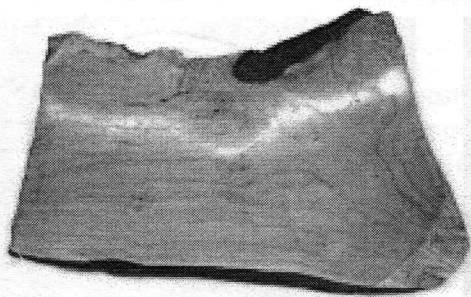
Jim Weidenfeller's pieces from Finland



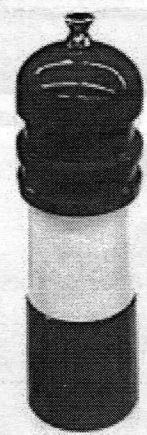
Peter's Kelton Ultimate Handle with R8 collet and 6" extension



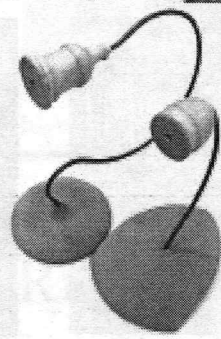
Jeff's napkin rings



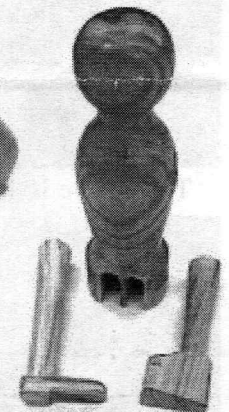
Andy Osborne's maple turning



Philip Meader's lighthouse pepper mills



Mike veno's prototype lamps



Don Diedrich's researching 1700's wooden dolls