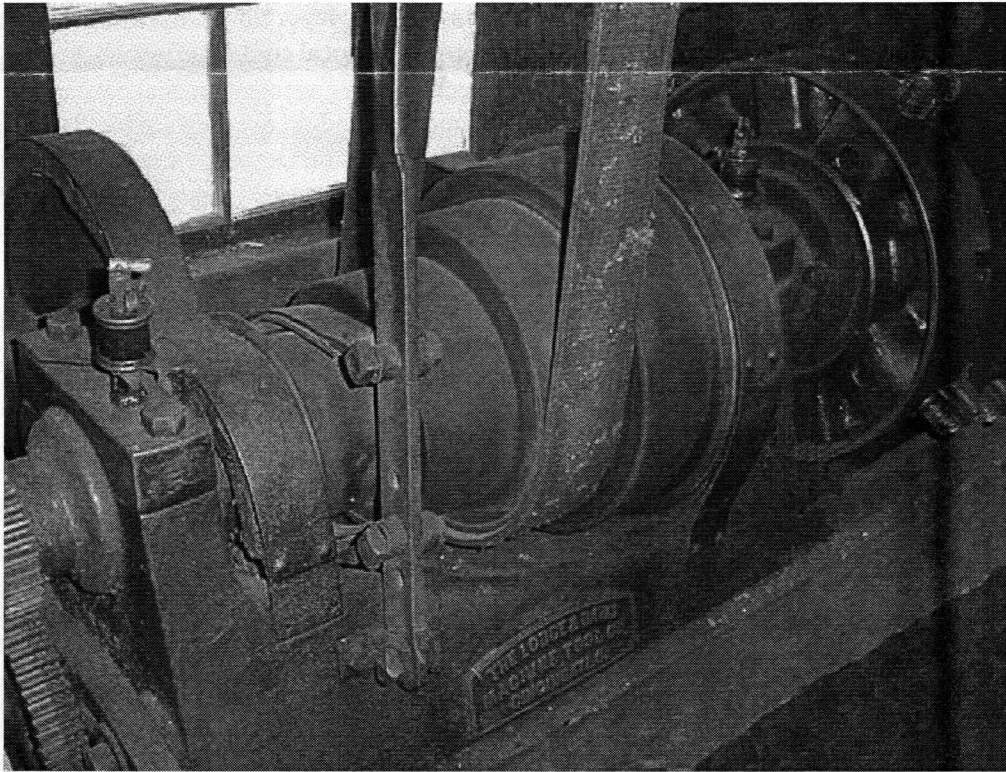

AS THE WOOD TURNS

November 2006 Issue 114

We got a Belt* out of seeing the Antique Lathes
at Holly Hill Farm



The old Lodge & Davis Machine Tool Company Lathe has seen better days, but it helped keep the farm tractors and machines in operation for many years.

Note the hand operated brake.

* *Slang*. A strong emotional reaction.

2006 MSSW Officers

President - Hank Cahill (781) 878-0234

Vice President - Richard Friberg (508) 378-2436

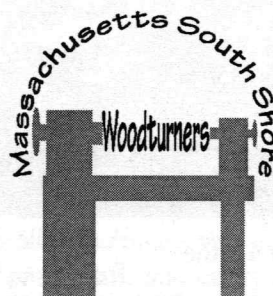
Treasurer - Wally Kemp (781) 871-1390

Secretary - Mal Partridge (781) 843-3883

Librarian - Leonard Mandeville (508-586-7679)

Newsletter - Mal Partridge (781) 843-3883

Web site: <http://www.mssw.sitelinker.org/>



Next Meeting

Tuesday, November 28, 2006, 7:00 P.M.

At Hank Cahill's *Dust Bowl*

Refreshments by: Paul O'Neill

Member Challenge: Christmas Ornaments:

Check our web site for details

Demonstration: Ken Lindgren

Meeting Minutes

The meeting was called to order at 7:00 pm at Hank Cahill's Dust Bowl

President's Report and General Business

Hank received three \$15 gift certificates from Craft Supplies that were included in wood raffle. He also received a newsletter from Surrey England.

Mal mentioned a 7 page article in the December Woodwork Magazine "Estimating for Furniture makers" that should be of interest to turners for pricing products. Also a turning article "A Bowl of Fruit" by Chris Child.

A set of Diamond sharpening tools that sold for \$18.99 at Costco was brought in by Mal for member appraisal.

Our annual Audubon Exhibit "Art Forms in Wood" will be held from November 18th to December 16th, and feature Lacemaker lamps, as well as the other great assortment of member turnings for exhibit and sale.

Mal had a Fibonacci gauge made from plans in the November 2006 issue of Wood Magazine.

MSSW Exhibit card 10 packs were available for the Audubon Exhibit. Members were sent an Acrobat file and directions last year for making cards. If a new member is interested in receiving the file contact Mal by E-Mail.

Lacemaker lamps sell for \$80 in England.

No reports from our treasurer and librarian as they were not at meeting.

Hank attended a Yankee Symposium meeting in Willimantic, Ct., a 2 1/2 hour drive from Abington. A demo by Cindy Drozda was held in Bolton Woodwork's Shop. (Four times the size of Hank's shop) A tent outside for dinner. All clubs have to come up with a temporary list of helpers and attendees. The Symposium will be held on June 1,2,3, 2007. Sleeping at the University will be \$35/night. Motels available at \$135/room.

It was agreed that we would supply our mini lathes for use at the Symposium. Dave Hutchins said that 7 grinders are needed. He is waiting to hear about a lathe available for the auction.

Farm day report: Bob Allen and John Murphy demonstrated and Ernie and his treadle lathe had the young children entertained by taking a turn at turning.

Jeff presented details and pricing for MSSW golf shirts. A minimum order of 50 shirts required for a pricing of \$22 each. Members would be required to pay in advance due to low treasury balance. It was decided to put off the purchase for a while.

The Holly Hill Farm Tool Shop tour will take place Saturday, November 11th. at 10am. Rich Silvia will be our guide.

Jesse Meyer reported sales of \$1300 during a 2 day show in his local community.

Ernie reported on a demonstration at Ocean Woodturners on October 14th., by Mike Allison, from Storrs, CT. He turns unique bowls and vases with colors and piercing. Check out his web site:

<http://www.michaelallison.us/index.htm>

Also check out Cindy Drozda's site:

<http://cindydroza.com/>

Ian reported on a demonstration in Worcester by Malcolm Tibbetts on segmental turning. His site:

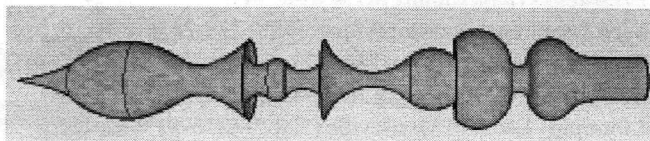
<http://www.tahoeturner.com/links.html>

The trophy that Bob McNee showed us in progress at his metal spinning presentation was in last month's Fishing Magazine.

Brian Conklin reported that Ken demonstrated for the kids at Hull High School.

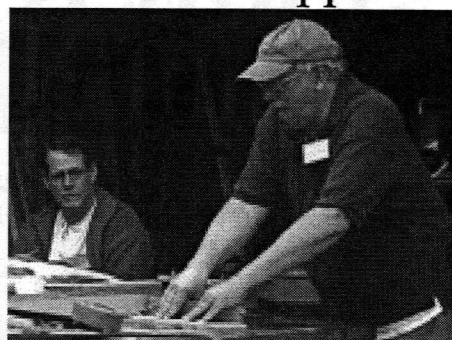
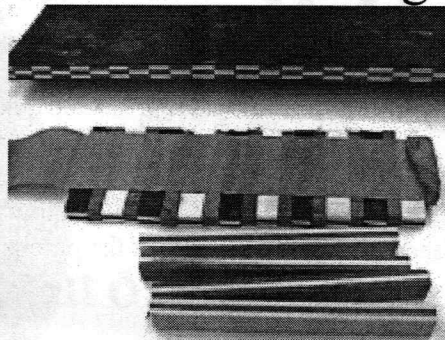
Hand's On at Hank's shop will be Saturday, November 25th. at 10am. to noon.

Google Sketchup - Free Version

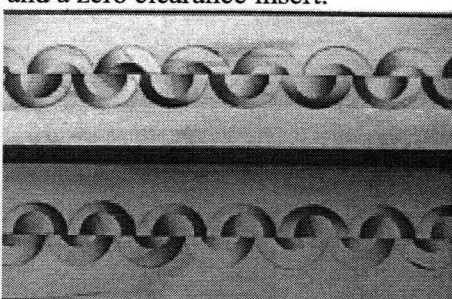
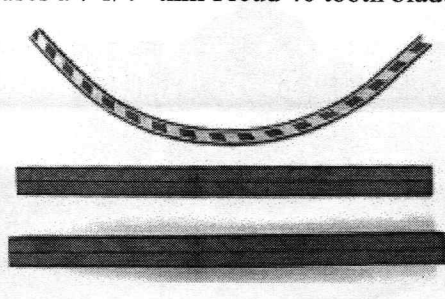
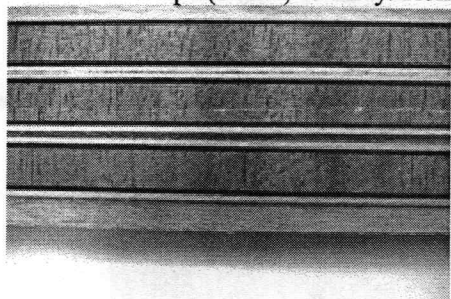


A spindle drawn with Sketchup. Download free version from Google or <http://www.sketchup.com>

Ron Knapp demonstrated how banding is made and applied

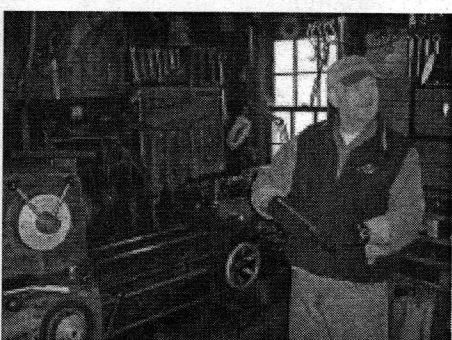
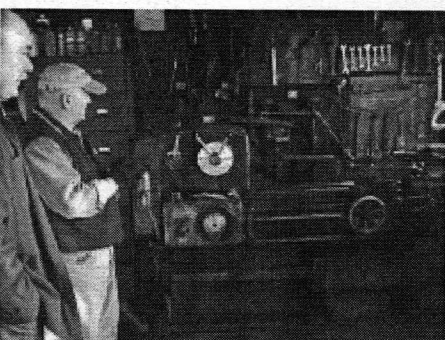
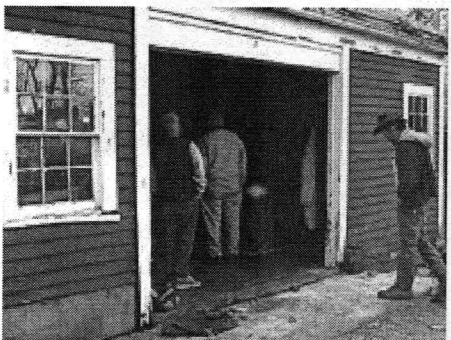


Banding patterns are made up of individual solid pieces of face grain hardwoods resawn from "bricks" to create strips (bands) to inlay. Ron uses a 7 1/4" thin Freud 40 tooth blade and a zero clearance insert.

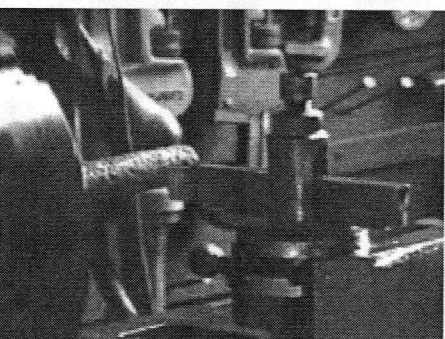
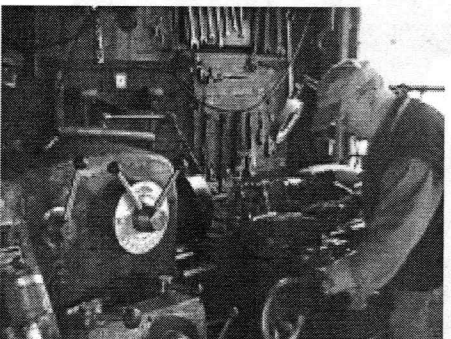


Banding can be inlaid around turned items, curved around forms and detailed by sand shading using fine beach sand in a frying pan. Banding is available at Woodcraft and Rocklers locally, but why not make your own?

Holly Hill Farm Tool Shop Tour



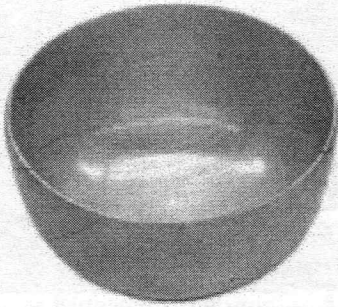
Members enter the tool shop at Holly Hill Farm, Cohasset, to be greeted by Rich Silvia who demonstrated turning on an old English Willson machine lathe that had been used to make parts for tractors and other farm equipment



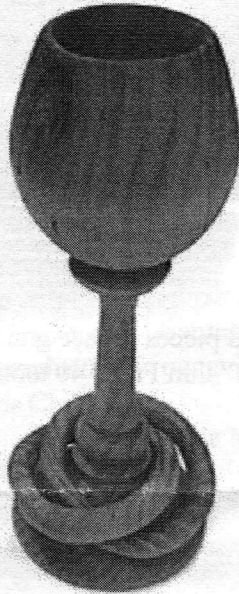
Rich clamped a steel rod in the chuck and proceeded to take a fine cut using hand feed and automatic carriage feed. While turning, he explained the operation of the lathe and safety concerns. Mal and Wally check out results.

Show & Tell

October 2006



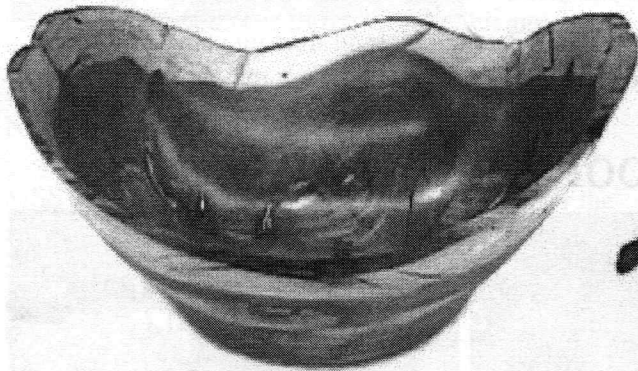
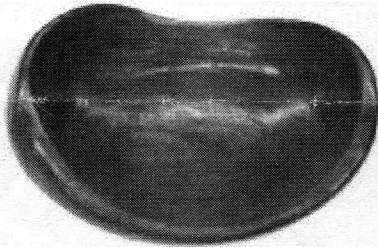
Paul O'Neill's maple and walnut bowls



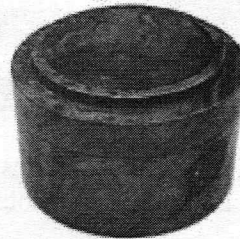
Bernie's pine goblet with two captive rings



Hank's Maple Burl bowl
Wood cost \$100!



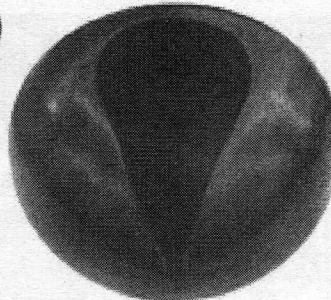
Nigel's cedar bowl from Hank's cedar



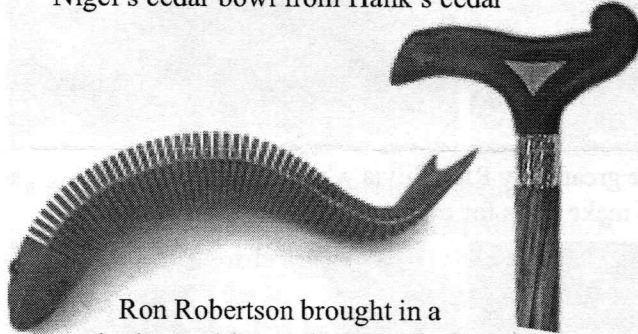
Jeff's small box - maple burl with cherry burl top



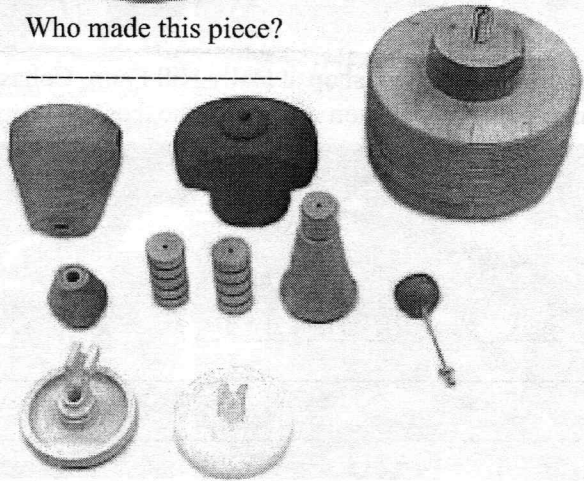
Ian's Kentucky canary wood and walnut 362 piece segmented turning



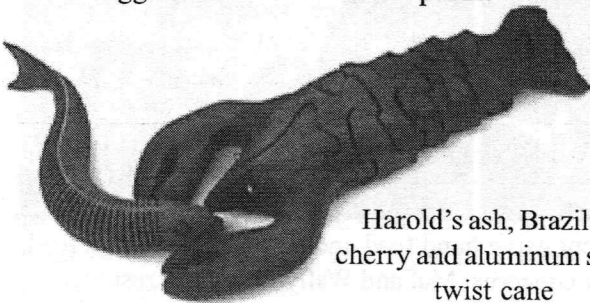
Who made this piece?



Ron Robertson brought in a wiggewood fish and lobster puzzle



Mike Veno's assortment of projects including a member challenge cherry



Harold's ash, Brazilian cherry and aluminum spiral twist cane