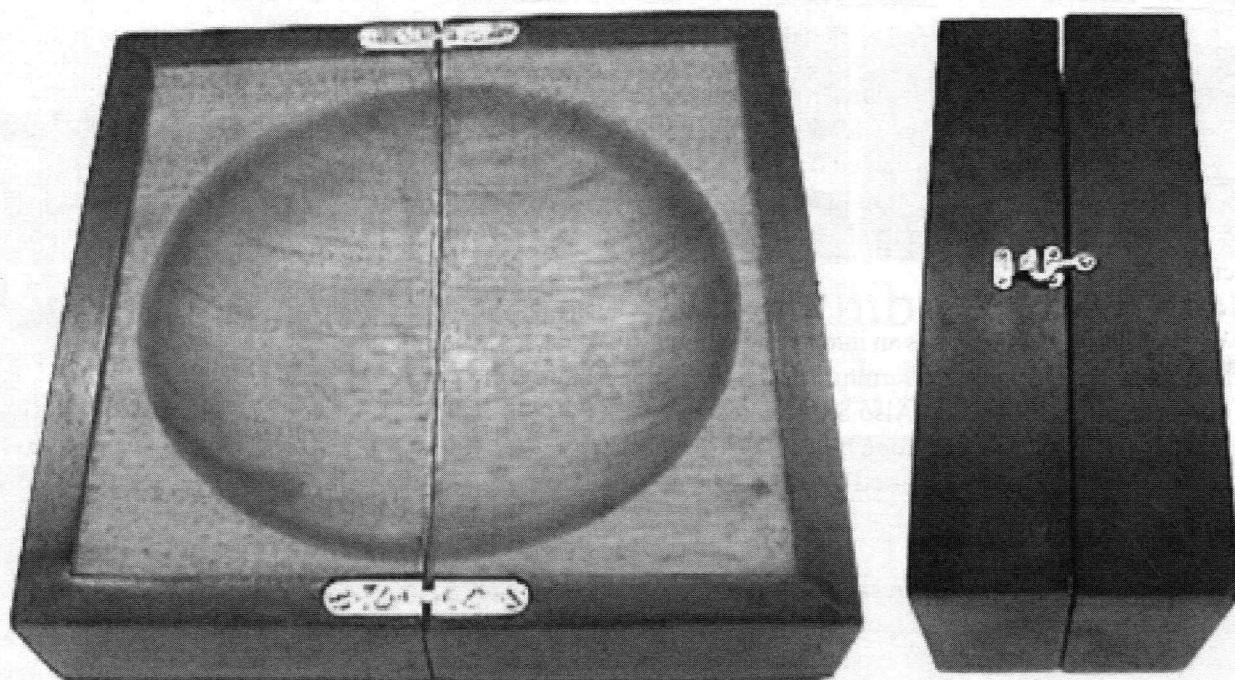

AS THE WOOD TURNS

November 2007 Issue 125

When You Get Boxed In Create a Bowl



Bob Sutter received an ovation from the members when he opened a box and revealed a bowl inside! Clever idea, when you give the bowl as a present it comes already boxed. When you close it, it self empties.

2007 MSSW Officers

President - Hank Cahill (781) 878-0234

Vice President - Richard Friberg (508) 378-2436

Treasurer - Wally Kemp (781) 871-1390

Secretary - Mal Partridge (781) 843-3883

Librarian - Leonard Mandeville (508-586-7679)

Newsletter - Mal Partridge (781) 843-3883

Web site: <http://www.mssw.sitelinker.org/>



Next Meeting

Tuesday, November 27, 2007, 7:00 P.M.

At Hank Cahill's *Dust Bowl*

Refreshments by: Sidney Katz

Member Challenge: Christmas Ornament

Demonstration: Nigel Howe:

How to make and use a Sandwich Chuck

Meeting Minutes

The meeting was called to order at 7:00 pm at Hank Cahill's Dust Bowl

President's Report and General Business

Hank reported that Ellyn Einhorn has left Audubon and will be going into teaching. We look forward to seeing her at our Christmas Party.

North Bennet Street School's open house will be held Friday November 2 10-2 and Saturday 10-3.

The CNEW newsletter was received for review.

Hank has made another Super Glue purchase for members. Keep refrigerated below 60 degrees for longer life.

Mal asked for 2008 refreshment volunteers. He also reported E-Mail problems with the addresses of Dave Eaton and Al Francendese. He received 6 Beall Tool Demonstration DVDs for distribution to members. We raffled them and kept one for library. Members can also contact Beall Tool for a copy.

Fine Woodworking Magazine has an interesting article about using Google Sketchup for furniture designing. A copy was distributed for review. Also Shop Notes - Tools and Jigs booklet has plans for a thickness planer that Ron Robertson built and reported on at a previous meeting.

Mal distributed the "Items of Interest to Woodturners" binder which contained details of the many excellent demonstrations we have had over the last 10 years.

Treasurer Wally Kemp reported \$2535 in Treasury. He also reported that North River Woodworking was selling off tools and wood. He also mentioned the many woodturning demonstrations on YouTube.

Lenny reported on status of Library.

Jae Ewart reported on status of funding for lathe for NBSS. Angelo said that he could apply for an AAW grant for \$1500 or more.

Our demo at Audubon Farm Day was a success with 30-40 10-15 year old children getting a chance to turn small baseball bats and tops. Ian sold one piece!

David Rice has donated books to the Library.

Mike Veno reported on the tool auction held by the Braintree School System. The Lathes sold for about \$350.

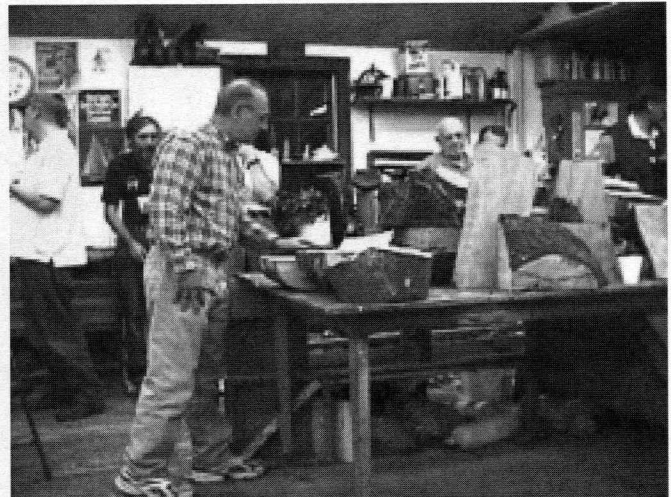
Ernie reported on his trip to Canterbury, New Hampshire for Old Fashioned Wood Days.

Ian has finished painting his shop.

The six member tree cutting team was in Duxbury last Saturday cutting a Cherry tree. See photos on next page.

Hank reported on the New England Woodcarvers Show. Two woodturning clubs were there turning.

Hand's on will be on November 17th.



Bob Iuliano getting ready to select a choice piece during the wood swap raffle



Angelo Iafate donated these candlesticks for the auction. Hank won the pair and Sid the single one. He also donated a set of turning tools for the raffle from the Yankee Symposium. Won by Mike.

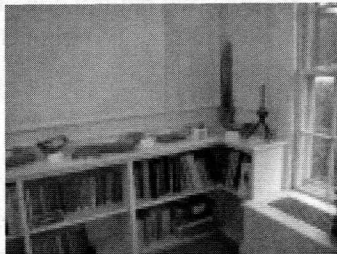
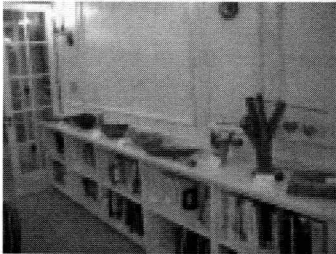
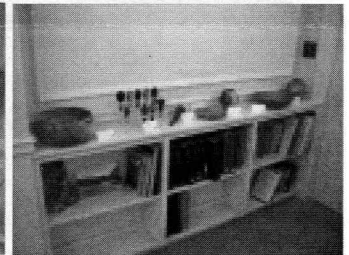
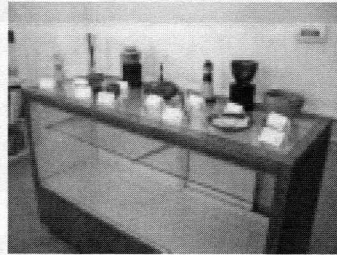
The Cutting Team cuts up a Cherry Tree in Duxbury



A Six member cutting team went to Duxbury to cut up an eight foot section of a Cherry Tree that had two crotches. Paul O'Neill is in the Orange outfit doing the heavy cutting. Mike Wells Jr. took the photographs.



Our Art Forms In Wood 2007 Exhibit at Audubon North River Sanctuary, Marshfield, Massachusetts



Photographs by Jim Denker

Show & Tell

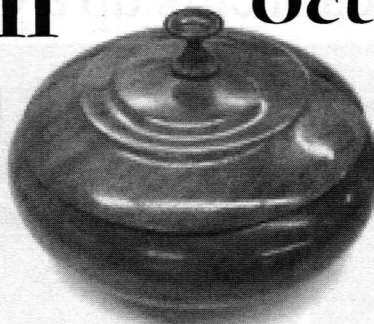
October 2007



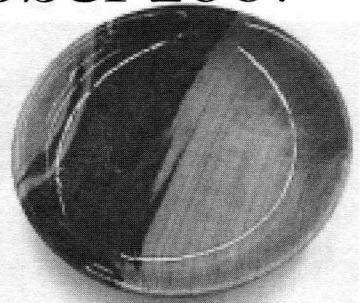
Mike Wells's bowl
from Hawaii Milo wood



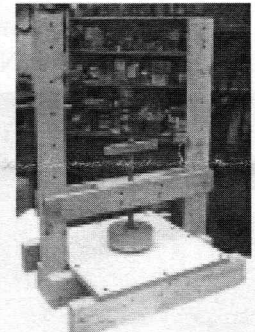
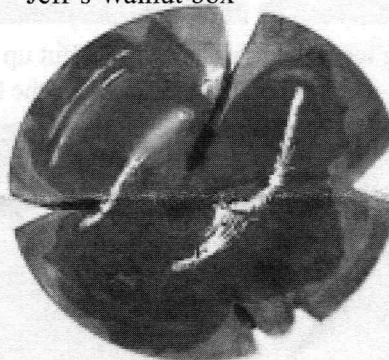
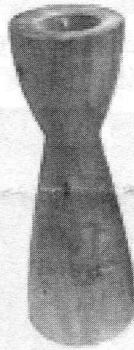
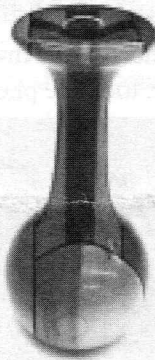
Ron's Cherry Vase



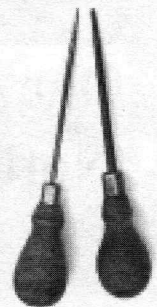
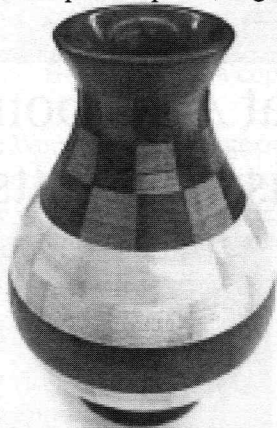
Jeff's Walnut box



Paul's Cherry bowl



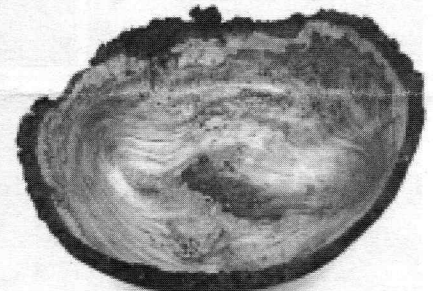
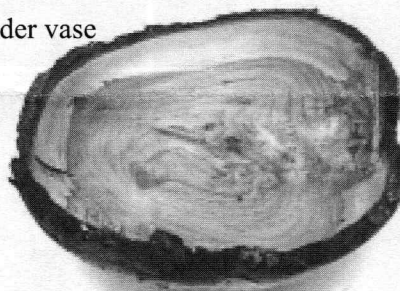
Ian's Tulipwood piece, segmented vase, poplar candlesticks, Cedar plate and Press for gluing up segmented pieces



Bob Trucchi's Cherry boxes
and offset candlestick

Rich's Maple awl
and antique awl

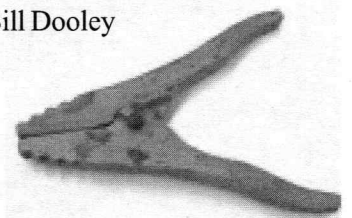
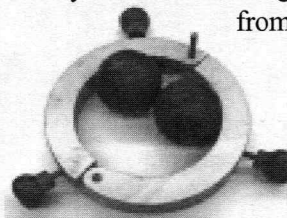
Jim's segmented 109 piece vase and Box Elder vase



Andy's Oak crotch turned on Nova 3000



Wally's two natural edge bowls from crotch with burls
from Bill Dooley



Mike's Sugar Maple bowl with growth rings dated under rim, Lamp jig with earth-moon balls, and bending tool