

AS THE WOOD TURNS

November 2011 Issue number 172 - Minutes of October



Jeff Keller and Bob Allen demonstrated at the Saturday Abington Senior Center Craft Fair October 29th.

Hands On – November 12th 10 am until noon

Challenge for November turn something you have not tried to turn before. Bring it (started, finished, or otherwise) to our next meeting for review, suggestions on how to make it, solve any problems you encountered, etc....

Bob Rosand demonstration on Saturday October 15 and workshop on Sunday October 16



2011 MSSW Officers

President- Hank Cahill (781) 878-0234
hecahillandson@hotmail.com

Vice president Nigel Howe (508) 537-3394
nbhtumings@yahoo.com

Treasurer Wallace Kemp (781) 826-6254
bbarker417@comcast.net

Secretary Jeff Keller (781) 878-7310
jkeller@nerej.com

Librarian Charles Rosen (781) 848-6589
charlesrosen@comcast.net



Next Meeting

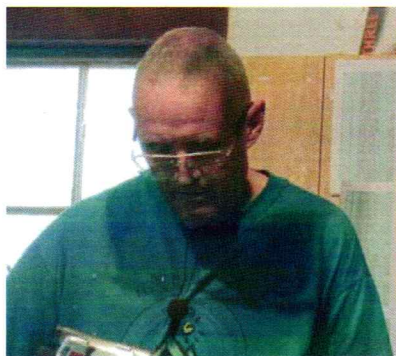
Tuesday, November 22, @ 7:00P.M.
At Hank Cahill's *Dust Bowl*

Refreshments by Paul O'Neil

Demonstration Ken Lindgren
Multi-axis turnings

Web site: www.msswt.org/

On Saturday Oct 15, 2011. Bob Rosand set out to demonstrate turning objects that would sell for \$30-35 at craft fairs and similar venues. He turned seven different items on Saturday. He sells candlestick sets of 3 (11", 9" and 7" hi) with turned "candles" for about \$100.



Bob Rosand



Set of candlesticks



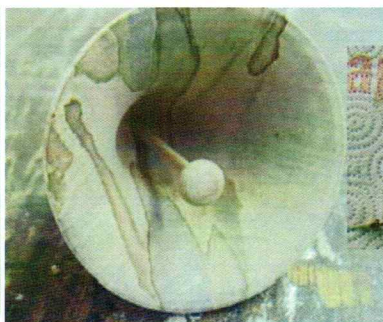
Coffee scoops



Acorn bird house



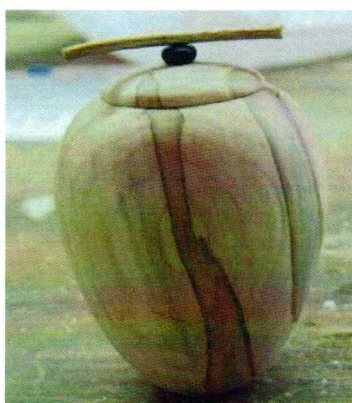
Xmas bell, clapper can move



'pyro'd ornaments



Ice cream scoop & bell



Lidded box



Candle stick



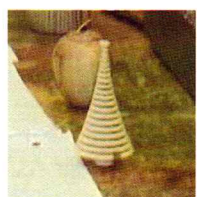
Earring stand



Ice cream scoop



Signed Xmas ornament



Silent auction results : winning bids were \$16. for the candlestick holder & candle (Dave Rice), \$25 for the box with the twig handle (Nigel Howe), \$7. for the tree and \$10 for the ring holder (both to Ernie Grimes), \$8. for the bell (Bob Scott), \$20 for the ice cream scoop (Paul O'Neil) and \$15 for the acorn ornament (Charlie Rosen)

Sunday October 16



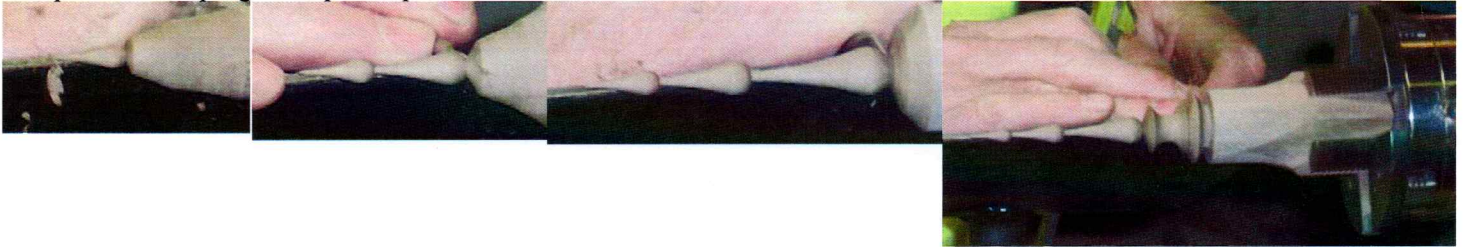
Pictured is a finished Christmas ornament in ambrosia Maple and Walnut instead of a Sea Urchin shell center



Bob Rosand helping Debbie Fox, a member of ART

Bob Allen, Jim Metcalf, a member of CNEW, and Bob Rosand

Steps in developing multiple drips on the icicle



Minutes of the October 24 meeting ---Nigel gave us a rundown on upcoming events-

Visitors- Dan and Matt Cook and Rick Fraser all from Abington

Jeff began by announcing the Abington Senior Citizens demo being held Saturday, October 29th from 10 am until 3 pm. We demonstrated turning and had two tables with turned items for sale.

Wally reported \$1510 in the treasury.

Bob Rosand's demo took in a total of \$979.00. We paid out \$1000. to Bob and had additional expenses of \$133.55 leaving us with a deficit of \$154.55 to which the money from the silent auction will be applied.

Bob Allen announced that we had several items from the Bob Rosand demo for sale to the highest bidder. Highest write in submitted bid by meeting's end wins the right to purchase the item.

Winning bids were \$16. for the candlestick holder & candle (Dave Rice), \$25 for the box with the twig handle (Nigel Howe), \$7. for the tree and \$10 for the ring holder (both to Ernie Grimes), \$8. for the bell (Bob Scott), \$20 for the ice cream scoop (Paul O'Neil) and \$15 for the acorn ornament (Charlie Rosen) giving us a total of \$101. for a net deficit of \$53.55 overall.

Nigel commented that Bob's demo was interesting. Bob Allen agreed that Bob Rosand was easy to listen to and to work with. At the hands on the following day, everyone got to finish an ornament.

Wally felt that a little more notice would have been good. To which Nigel replied that we already have turners lined up for 2012 to include Glen Lucas from Ireland on March 24th and 25th on his way to the "Totally Turning" expo in Saratoga Springs, New York and Jimmy Clewes who will be returning October 26th and 27th.

Wally proposed a "Death review" discussion for an upcoming meeting to discuss accidents and troubles members encounter using the lathe. No date was scheduled.

Wally mentioned that the club needs better workbenches for the lathes for demos and for the hands on sessions. Black & Decker has one for \$50. To which Nigel proposed letting Wayne Miller look into this and give a report at a future meeting.

Ron Robertson asked Bob Allen how he thought the speaker system for the Rosand demo worked out with the thought that we could buy the sound system for the club with a wireless mike for \$120. The club voted in favor of doing this.

Ron also mentioned that flat screens are good for demos, something to think about.

Bob Allen also raised the point that other clubs pay outside local turners \$150 for demos. These are not professional turners. Do we want to also do this and if so for how much? Andy Osbourne thought the fee of \$100 was sufficient. Nigel said that the committee had compromised on \$125. After further discussion on travel time and distance and the preparation involved, I proposed leaving it at the original \$150 which the club voted in favor of. This would be for nonmembers only.

Wally mentioned that Chris Glenn of Glenn Tree has Black Walnut logs for sale.

Wally pointed out that the South Shore Audubon show in Marshfield on Route 3A has a set up day of November 12th (Saturday) from 1:00 until 3:00 in the afternoon. Pick up will be on December 17th. They will also have an open house Saturday, December 3rd, from 10:00 am until 4:00 pm and turners are invited to attend. Wally volunteered to receive items for display for the show at the Hands On that morning and he would take them over and display them. Turners can also drop them off during the following week between 10:00 and 4:00.

Charlie Rosen mentioned that he has a design template for cards to use with the displays giving information to prospective customers that we could use at Audubon. The club decided to explore this. He also mentioned that Bob Allen had donated the book, "Woodturning Design" to the library.

Charlie said the club website is being updated. He is adding information to the calendar listings on the front page with a drop down to include additional information on events. This information is to come from the various committees to prevent misinformation and confusion.

October 29th is the South Shore Senior day exhibit & Demo. We will have two tables and a lathe. Hank will coordinate.

Wood sources - Bob Allen spoke with River Rise Farm on Union Street in Marshfield. It has lumber from storms including apple, cherry, black locust, sassafras and birch. We will maybe have a chainsaw party soon there.

Club Challenge Bob Sutter proposed that the challenge project for the next meetings be for each member to turn something he or she had never turned before.

Show and Tell



silent auction items turned by Bob Rosand on display



Bernie displays a three sided turning as a work in progress.

Members suggested leaving the bottom round, three cornered (feet), or making a 'standard' foot



Bernie showed a natural edge bowl of unknown spalted wood with bark inclusions. Suggestions were to not fill the voids with "coffee grounds" or "inlaid" – rather "just put a finish on it and be done".



Fred Ayers with a nest of bowls of curly Maple turned with his coring Machine



Tim Ayers with his red Oak bowl



Bob Scott shows a black walnut bowl he turned green



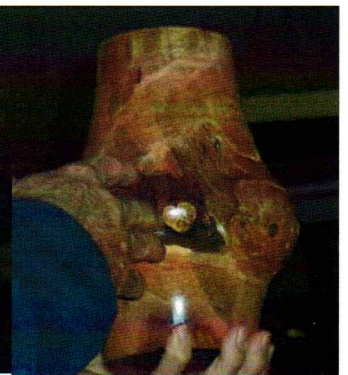
Bob with a small box turned from Mulberry



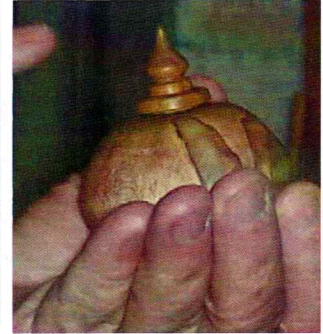
Bill George - a small Cherry bowl made from "Dooleywood" with a natural edge



Ben Natale shows off his small Cherry bowl finished with tung oil.



Ben also had a Maple burl bowl from Dooleywood.



Ken Lindgren's "tusk" made for his girlfriend from bleached Maple finished with 5-6 coats of lacquer

Paul O'Neil discusses how he turned his Cedar bowl

Dave Rice displays his Lignum Vitae box turned from the Bob Rosand demo. He wanted to turn something "little".



Andy Osborne - a Walnut bowl with a rub 'n buff metallic finish below the rim. He used an oil finish dabbed onto the ring to maintain the metallic color with a water base urethane over all to avoid the finishes dissolving with each other.

.- Andy Osborne commenting that this must be "Box Week" shows off his box made from cherry burl with an ebony collar, a red heart lid and ebony knob. He finished it with urethane oil.

.- Sid Katz with perhaps his largest turning to date, a Dooleywood Cherry burl vase complete with bug holes for character. He coated it with epoxy before turning and also added a rosewood collar to both ends for accent

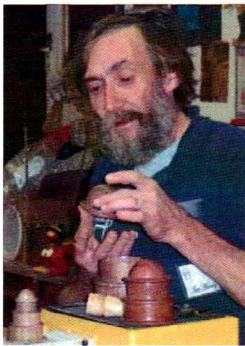


Jeff Keller shows his sweet gum "flying saucer" style box finished with wipe on poly

Ian Manley with a Moya wood box that finished in "Crystal Clear" by Krylon with three coats. He said it would not **buff up**.

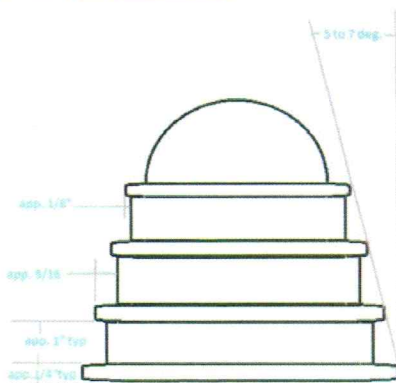
Ian Manley had a variety of shell Christmas tree ornaments with turned upper and lower parts.

Note from Ian : Anyone looking for sea urchin shells locally for making christmas ornaments I get mine from Surf -N-Turf , shells and plants, 161 main street, Lakeville, MA 02347 Pam Levine, 508-947-7964 - email: surfturf@shellcraft.net WWW.shellcraft.net .She does local shows (listed on her web site), or call her and make arrangements, to go by her house & get them



Demonstration

Ian Manley demonstrated the making of turned tiered boxes in the style of Ray Key. Start with a blank of dry wood that is between 1 1/2" to 4" square and 5 to 9" long. Ian provided a handout detailing all of the steps involved. One of the boxes had its top part held on by magnets making it a "hidden" compartment type box



B. Turning tiers

1. Rough out the blank with a tenon on both ends.
Put one end in the chuck and center other with tailstock.
2. Leave 1/8" at full dia. Step in next inch - 5/16 to 3/8" & part off.
3. Rechuck parted off piece in chuck and hollow. Define edges, sand to 400, and finish.
4. Rechuck remainder of blank, turn a tenon that fits the inside of finished lower box section.
5. Put the finished lower box on the new tenon and remove the tenon and finish the bottom.
6. Trim the dia. Of main blank down to 1/8" greater than first piece.
This becomes the new full dia.
Repeat steps 2 to 5 for remaining tiers.

C. Turning Dome

1. Start the same as any tier, but instead of straight section, start rounding the blank into a dome.
2. Hollow the center if desired.
3. Part off the leaving enough to complete the dome.
4. Reverse mount the dome in a jam chuck and finish off.

D. Finishes

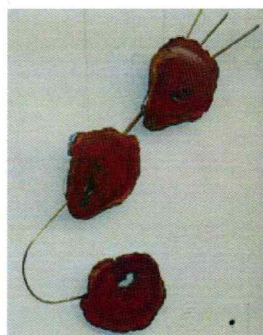
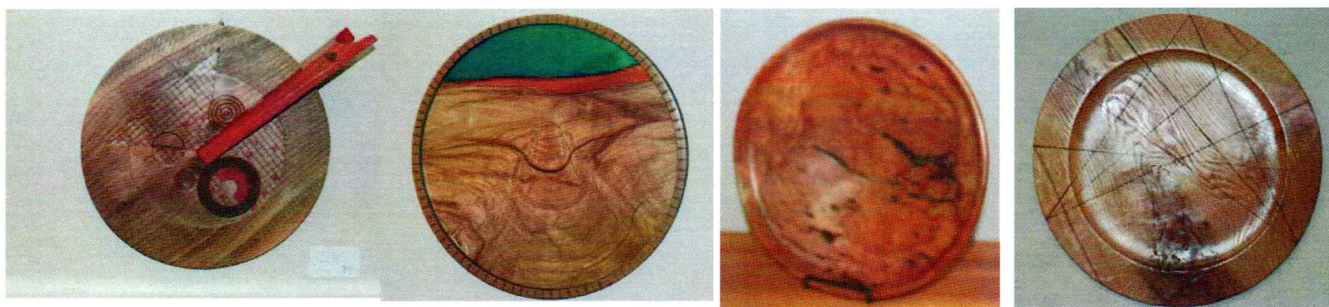
You can finish the piece as you go along with friction finish. (shellawax, mylands, or home brew)
Home brew recipe---Put equal parts of Boiled linseed oil, shellac and denatured alcohol
In a container and shake well. Apply with a paper towel and burn
In at high speed.

You can finish off the lathe with oil, poly or lacquer
I usually buff boxes with Beale system after finish has cured.

Wally Kemp gave a slide show presentation on wall hangings from the James Library show this past January to help members better understand the possibilities for the February 2012 show. Suspending wall hangings is best done by a wire attached to the wall to a hook. This system will support about 60pounds. Bob Sutter mentioned that you can buy plastic hooks to use in suspending your work from the wall.



Bernie Feinerman interjected that imagination in the design is the \$64,000 question. Hanging a platter does not require imagination. A wall sculpture requires imagination on the part of the hanger.



Some of the shown items are platters which were shown sitting on a shelf but could be mounted on the wall by using plate hanger.

Future events

March 25, 2012 – Glenn Lucas

October 26,27 2012 Jimmy Clewes

Undetermined - “fess up” meeting

