

---

# AS THE WOOD TURNS

## November 2018 - Issue number 248

Hands On planned at Hank's Dust Bowl : Saturday November 10<sup>th</sup> , 9:00 am until noon  
December 8<sup>th</sup> , 9:00 am until noon

*We invite beginning turners to a learning opportunity at the Hands On for one on one instruction. Spindle or bowl turning techniques will be covered. Please reserve your lathe with Tim Rix, or Pablo Gazmuri @ [pgazmuri@comcast.net](mailto:pgazmuri@comcast.net)*



Pictured is the large Cherry burl Wally received from a fellow in Marshfield. It is on display in the dining room of the Ember Restaurant located on Rte. 139 in Marshfield.

## Minutes of the October 23<sup>rd</sup> meeting

New members: Louise Sawyer from Foxboro and John Bagnell from Taunton

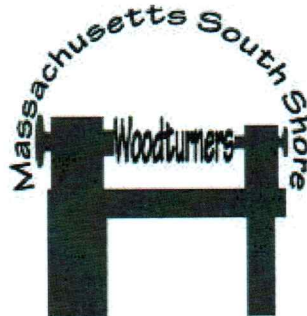
Dues are now being accepted for 2019. They remain \$50 for a single membership or \$70 for a family membership. See Tim or John. John Duggan said the club has \$654.75 on account plus membership payments.

This was Ellen Williams last meeting as she is moving to Missouri. She presented the club with a "Thank you" note for all the encouragement she received during her association with us and also a donation of \$300 to the club! Thank you Ellen!

Steve announced that elections will take place for officers next month. He said that John, Lenny, and himself have one year left of a maximum four year term but anyone can be nominated and run for office. Steve also mentioned that his schedule has filled up and as a result he has missed a lot of Hands On sessions and it is not going to get any better.

### MSSW Officers

<b>President-</b>	Steve Wiseman (508)-285-9394 <a href="mailto:stevwsmn@aol.com">stevwsmn@aol.com</a>
<b>Vice president</b>	Len Langevin (508)-789-4211 <a href="mailto:lennysminiatures@gmail.com">lennysminiatures@gmail.com</a>
<b>Treasurer</b>	John Duggan (508)-583-7930 <a href="mailto:john.duggan06@comcast.net">john.duggan06@comcast.net</a>
<b>Secretary</b>	Tim Rix (617)-259-5618 <a href="mailto:rix.tim@gmail.com">rix.tim@gmail.com</a>
<b>Librarian</b>	Lenny Mandeville (508)-586-7679 <a href="mailto:manleo@comcast.net">manleo@comcast.net</a>
<b>Webmaster</b>	Tim Rix (617)-259-5618 <a href="mailto:rix.tim@gmail.com">rix.tim@gmail.com</a>



### Tuesday November 27, 2018

- at Hank's dust bowl at 409  
Washington St., Abington, MA at 7 pm

Refreshments- will be supplied by  
Fred Johnson

**Demo** – Lenny Mandeville will  
present a demo on painting  
decoration on turned objects.

Steve thanked Lenny Langevin and Joe Centrino for all of their help with the Arnold Arboretum show. Lenny brought back members unsold items and has them ready for pick up. The club sold items worth \$691.47. We plan to participate again next year. Lenny remarked that "*hundreds of people came through the show*".

On a separate note Steve mentioned that he had received an email from Steve Bull who represents the Plymouth Woodturners Club in Plymouth, England. Their 20 year anniversary is coming up next year. 2020 will be a 400 year anniversary of ships sailing to the New World. Would our club be interested in "twinning" with them?" Members voted in favor of doing this, with more discussion to follow at future meetings.

November 3rd. - Sorby Tools will have a rep at Woodcraft in Walpole all day demonstrating their tools and their sharpening system, the belt sander. There will be demos in the morning and also in the afternoon. At the end of the session, they will sell their sharpening system used in the demo at a deep discount.

The AAW is looking for new members and maintains a site for those interested in learning about woodturning. They offer extensive videos on all aspects of turning to existing members for free. While we recommend that everyone interested in woodturning join the AAW, there is lots of free information for beginning and seasoned turners alike available in the Discover Woodturning pages.

<http://www.woodturner.org/?page=DiscoverWTHome>

The Holiday Christmas party will be held Tuesday, December 18th. It will feature a potluck supper so members should bring a dish to the event. Possibilities include an appetizer, side dish or dessert item. We will also have a gift grab afterwards. If interested in participating, you must bring something you turned (not purchased) wrapped in a paper bag with a long string to be placed in a large box. Members will draw numbers to come up and select a bag from the box and then try to guess who turned it. You must put something in if you wish to take something out. Only club members can take part. Also your turning must be a completed object. No I.O.U.s, kits, or gift certificates please.

Steve said he received a call from Mal Partridge's son Randall. Mal is 96 years old now and has recently moved into a nursing home. Randall asked if we would hold a sale of Mal's shop. This includes a wood shop and a metal shop. The sale will be held this Sunday starting at 11:00 in the morning at Mal's former home located at 33 Nicholas Road in Braintree. No reasonable offers will be refused on tools.

Steve attended the Cape Turners video presentation by Mike Mahoney last Saturday. It featured a number of videos presented by Mike via Skype on the internet. Anyone could ask him questions as we went along. It was \$5.00 for Cape members and \$15 for others. It was broadcast live from California. There were 35 people attending. It is probably the wave of the future for clubs to view woodturning techniques and demos by a professional turner.

Lenny Langevin reminded us that the Holiday show at Audubon headquarters on Route 3A in Marshfield is coming up. Their Open House will take place Saturday December 1st. All items for sale will need to be dropped off there by Thursday of the preceding week. In addition, items must have a price on them and the name of the turner. Audubon will also need to receive a corresponding list with the turner's name and contact information and list of items and prices. Items can remain on display for sale until Thursday, December 20th.

The James Library in Norwell center will hold a one day Craft show and Open House on Saturday December 1st. from 9:00 am until 3:00 pm. We will have a table of items for sale there. If interested, see Lenny Mandeville.

Ron Reynolds announced that the club store is well stocked. There is also plenty of Anchor Seal.

Peter Soltz announced that three weeks ago, Sidney Katz suffered a stroke. He went to the hospital and since has been moved to the Hebrew Rehabilitation Center in Dedham. He will come home this Monday.

Wally said that he received a phone call from a fellow named Bob who said he had a large burl in Marshfield. Wally collected it, hosed it down and hollowed it out. "What to do with it as it was so large?" He called Ken Lindgren who did more hollowing. Recently he said he asked Ken to bring it back so he could show it to Chris Brenner, owner of The Ember Restaurant located on Route 139 in Marshfield. Chris displayed it in the middle of his restaurant dining area with lights and is asking \$3000.00 for it. He has it for six months.

### The "demo" was a discussion on finishing a turning

Steve began by addressing the fact that finishes are food safe after they have cured (usually within the range of 7-30 days after application). Does a person have a nut allergy? Mineral oil is 100% food safe (it is also a laxative). Steve said universal sanding sealer dries in five minutes and you can sand it back and apply any finish you want to on top of it (except an oil finish). It's easily available at Ace Hardware, Factory Paint, Home Depot, others.

Ken Lindgren added "-It's all about good turning. You want to look for defects before you even think about applying the finish as it will just magnify them. In Japan, the artists are the ones doing the finishing, while the gophers are doing the actual turning."

Steve added that he likes to keep the dust down by using a mixture of 90% paste wax and 10% mineral oil mixed and applied while the lathe is turning. After every grit, wipe the piece down to remove any excess, otherwise you wind up grinding it into the finish. Steve says a lot of times he goes up to 2000 grit. Just remember this is a wax finish -it will need reapplying. Steve also mentioned using Yorkshire Grit which is a paste. It is similar to sanding to 1200 grit and is a wax finish.

Steve said he also uses the Beal System at the end to complete the finish on a piece. You are buffing it with Tripoli then white diamond and finally Carnuba wax on separate buffing wheels.

Disposal of materials into a metal trash can. Avoid combustion.

Michael Veno added that linseed oil with oxygen will cure. It causes heat when it dries.

### Show and Tell





Several blanks turned by Nigel over a year ago and ready to be finished were available to members at the end of the meeting.

Lenny M holds a small box which he used Amber Epoxy. It is a variety of glued up wood with an Ebony finial on the lid.



Jeff showed a Norfolk Island Pine vase. He used a jig to hollow it out and then used a two part wood bleach to lighten the outside. The bleach did not affect the knots, or the spalting. He finished it with a water base poly urethane and light sanding & buffing with the Beal System. The top & bottom are Bloodwood finished separately w/friction polish, then glued on at the end.



Charlie showed a goblet and a hollow form vessel. The goblet is turned from Ash which he painted with iridescent paint swirled using a string dragged across the surface for accent. He then applied 28 light coats of lacquer and rubbed it with Yorkshire Grit. He applied Myland's Friction Polish on the inside.



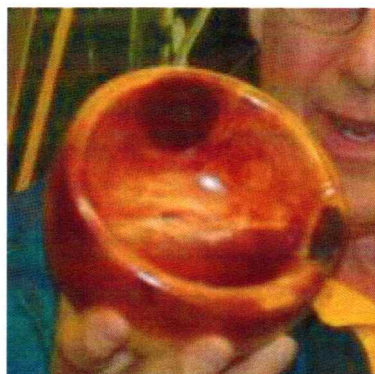
The hollow form vessel is turned from Sycamore. He used red paint on the inside



Ken showed us a natural edge bowl to which he had applied several colors of Aniline dye and blended them in. *He remarked that "small amounts of color are better in my opinion". He said he thought the base looks heavy and is contemplating carving it into feet to lighten the appearance.*



Lenny showed cups turned from a Blue Spruce taken down at a friend's house. High resin content of the wood caused chips to stick everywhere during the turning. He sanded, buffed them, & applied five coats of wipe on poly.



Peter showed a Red Cedar bowl he turned, and a bowl turned from African Padauk





Kevin showed four turnings. The first, an Oak burl bowl cored from a larger piece which he colored with magenta and finished with Yorkshire Grit and Hampshire sheen. The second, a Spalted Apple bowl which he presented to Ellen Williams as a gift for her new home. The third turning was a part of a table leg he hollowed out and colored making it into a weed pot or vase. He used sanding sealer, an alcohol based blue and magenta dye. He then air brushed black onto the bottom and applied a lacquer finish. The last item was a weed pot turned from Sycamore which he pierced. He also textured the bottom.



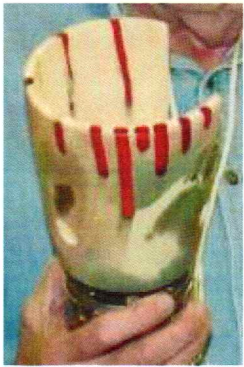
Glenn has a nice medium size bowl turned from Mahogany and finished with a spray lacquer.



Joe showed a large Cedar compote fruit bowl which he finished using boiled linseed oil, wipe on poly, and the Beal System. He also showed a Box Elder yarn bowl with a Tung oil finish and the Beal System. He used a coping saw to cut the loop and smoothed it with a rotary tool.



Andy has a large bowl turned from Oak last winter and finish turned last month. He dyed it magenta and used sanding sealer before applying a black patinating wax. Andy also showed a large hollow form, his first, which he turned last year from a branch that fell into his yard. He finished it using a high gloss urethane. He then epoxied the base to a stone. The hollow form was initially decorated with Grape vines and brass pins. The Grape vines have since been replaced with wire.



Steve showed two vases. The first is a Spalted Holly vase turned from wood from the Arnold Arboretum. He filled the cracks with dyed red epoxy and added a battery operated candle light for effect.

The second is a "Marshfield Maple" vase in which he applied lots of resin in order to strengthen it's rotten structure. The effect was that it looked very burl like -and desirable.

Tim holds a Cedar turned end grain bowl with stand. He finished it with shellac.

Using a skew, Tim turned the honey dippers pictured here. They have a beeswax finish. Two are Cherry, the third is Epay

October 13<sup>th</sup> Hands-on



Jeyna Toure holds a section of Ambrosia Maple with a nice figure from a cross section she just cut using the bandsaw.



Peter Soltz turns a natural edge bowl



Tim Rix showing Matt Menapace a spindle *turning* technique



Ron Reynolds speaks with guest attendees Oliver Sun and Glenn Milliken (L-R) from Dorchester

## Upcoming Events

The **Robert-Sorby** company will be at the Woodcraft Walpole 3rd November and Woodcraft Woburn on 4th November 2018. We'll be demonstrating many of the standard tools and good range of our specialist tools. Look out for wobble chuck, Spindlemaster, spiraling, and texturing tools and of course the ProEdge sharpener.

James Library has a one day Christmas Craft Fair Saturday, December 1<sup>st</sup>, from 9:00 am to 3:00 pm.

The Audubon Craft show for the Christmas Holidays will begin with the Open house on Saturday, December 1st. Exhibits should be dropped off the preceding week and can remain until Thursday, December 20th.

Our club Holiday Christmas party will be held Tuesday, December 18th.

## Articles of general interest

From: **peter soltz** <[psoltz29@gmail.com](mailto:psoltz29@gmail.com)> "Sidney and I have combined our collections of Woodsmiths, and we have issues 7 thru 145 available for no charge if one our members would like them".

## AAW Information for New Wood Turners

The American Association of Woodturners maintains a site for those interested in learning about woodturning. It has lots of free information about getting started in woodturning. While we recommend that everyone interested in woodturning join the AAW, there is lots of free information for beginning and seasoned turners alike available in the Discover Woodturning pages.

<http://www.woodturner.org/?page=DiscoverWTHome>

**Items For sale at the Club store** : – contact Ron Reynolds at [reynoldson@comcast.net](mailto:reynoldson@comcast.net)

JSP respirators spare parts (batteries, tear off shields, filters, pre-filters, and replacement face shield) available in the store

MSSWT MEMBER STORE

GLUES:		PRICE
	2 OZ. CA	4.50
	2 OZ. RUBBERIZED	6.00
	8 OZ. CA	13.00
	16 OZ. CA	23.00
	THICK, MEDIUM, THIN: SAME PRICE	
	2 OZ. ACCELERATOR (spray bottle)	3.50
	8 OZ. ACCEL. REFILL	5.75
	2 OZ. DEBONDER	3.25
	4 OZ. EPOXY	6.00
	2 OZ. REPLACEMENT CAPS	0.50
	LONG NOZZLES	0.75
	2 OZ. EMPTY BOTTLES	0.75
<b>ANCHORSEAL:</b>		
	LARGE (approx. 1 gallon)	16.00
	MEDIUM (approx. 1/2 gallon)	9.00
	SMALL (approx. 1 quart)	5.00
<b>SANDING DISKS:</b>		
	2"	3.50
	3"	4.50
	2" or 3" Replacement H&L Disk	0.50
	2" HOLDER	10.50
	3" HOLDER	12.50
	2" BLUE HOLDER	14.50
	3" BLUE HOLDER	16.50
	1/2" SOFT INTERFACE PAD EXTENSION	5.50
	3" HANDY SANDER (Palm Sander)	8.50
	SANDING TACO	4.50
	2 or 3" HAND HELD HOLDER (Kidney Shape)	12.00
<b>CLOTHING:</b>		
	CAPS	15.00
	TEE SHIRTS	16.00
	2X TEE SHIRT	18.00
	POLO SHIRT	27.00
	2 X POLO SHIRT	29.00
<b>MISCELLANEOUS:</b>		
	3" Lambswool Buff	9.00