

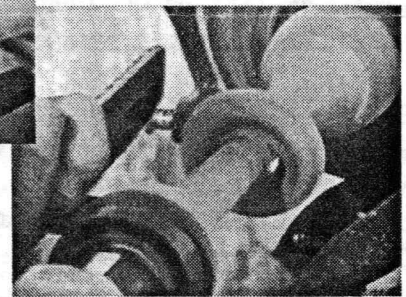
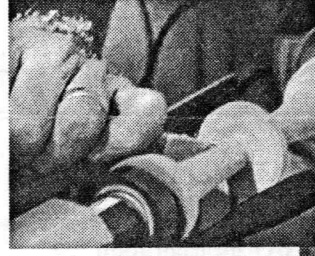
# AS THE WOOD TURNS

October 1998

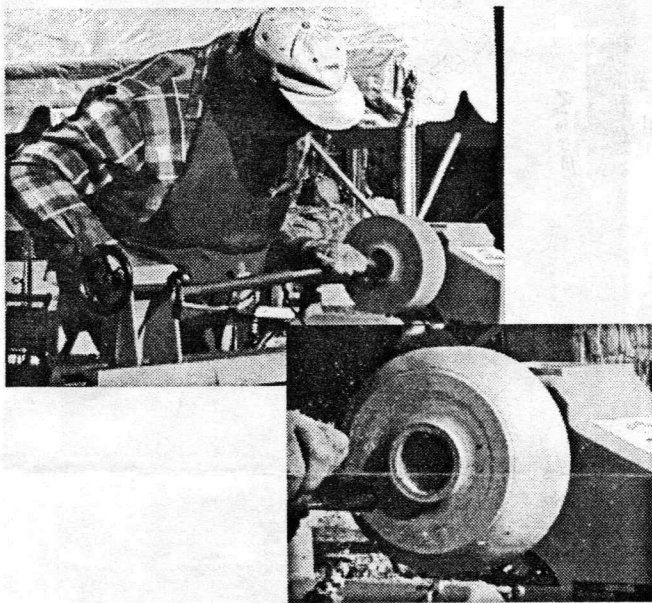
## Woodturning Demonstrations By MSSW Members At Audubon Daniel Webster Farm Day



Nicholas Shooshan puts on "safety glasses" to observe woodturning demonstration and receives a reward !



Roger Hill turning captive ring on goblet stem.  
Image captured as it just breaks free!



John Murphy demonstrates the turning of a cherry bowl



A table of turnings & carvings for sale by members

### 1998 MSSW Officers

**President** - Hank Cahill (781) 878-0234  
**Vice President** - Gary Levine (781) 843-3695  
**Treasurer** - Wally Kemp (781) 871-1390  
**Secretary** - Charles Rosen (781) 848-6589  
**Librarian** - John Murphy (781) 834-1179  
**Newsletter** - Mal Partridge (781) 843-3883



### Next Meeting

Tuesday, October 27, 1998  
7:00 P.M.

At **John Murphy's Shop**  
Refreshments by: Gary Levine  
Demonstration: Steam Bending

# Meeting Minutes

The September meeting was called to order at 7:20 pm at Jack Nash's shop.

## President's Report

**Hank** received a booklet "Gallery of Lathe Turned Objects" from the Woodturning center for the library. A copy of "Turning Points" magazine was circulated and is available for \$25 ( 4 issues/year). A Lee Valley catalog was also shown - lots of quality goodies.

**Karen Brown**, the reporter responsible for the MSSW article in the Quincy Ledger, will receive a bowl from **Hank** in appreciation for her efforts.

**Bill Johnson** from North Carolina sent information on How to Videos which will be given to Librarian **John Murphy**. **Hank** again mentioned the upcoming Woodcarving and Turning Show at the Radison Hotel, Cromwell, CT Oct 31/ Nov1.

Treasurer **Wally Kemp** reported \$997.46 in treasury.

## Old and New Business

Programs were made available for the upcoming New England Woodturning Symposium, October 17, which is sponsored by CNEW. In addition to the demonstrations and hands on sessions an area will be set aside to enable attendees to talk with the demonstrators.

**Wally**, **Hank**, **John Murphy** and **Roger Hill** agreed to demonstrate at Audubon Daniel Webster Farm Day. Set up prior to 10:00am with turning demonstrations to 4:00pm, with a noon break for musical entertainment. (Not supplied by MSSW volunteers!) A table will be supplied for display and sales of items by members.

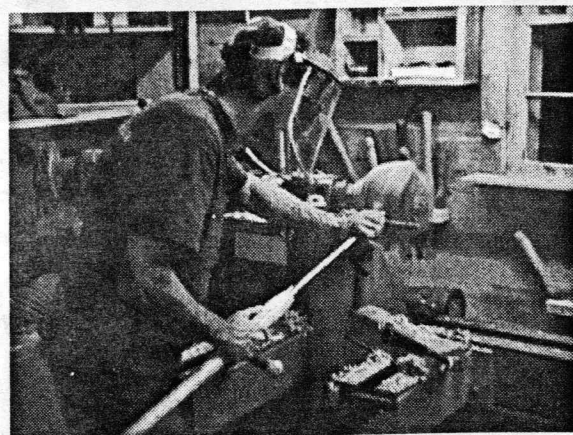
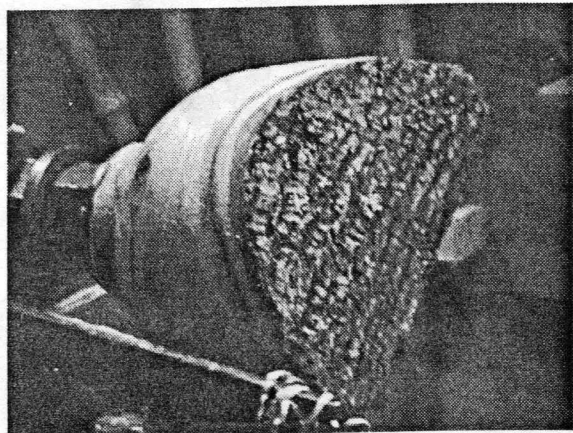
**Wally** purchased a lathe from his next door neighbor for \$50. He showed the stripped threads on the tailstock feed screw of his large Delta lathe. A discussion ensued as to why. Only **Wally** knows!

Friday, October 9th 10:00am, was agreed upon for setup of the Audubon/MSSW "Art Forms In Wood" exhibit, which will be on display through November 28th at the North River Wildlife Sanctuary, South Shore Regional Office, 2000 Main Street, Marshfield, MA.

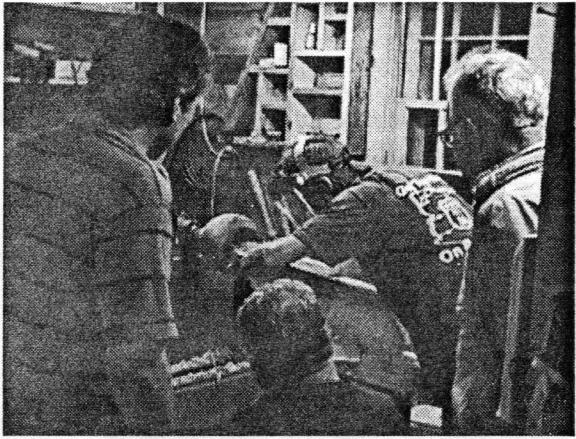
**Roger Hill** is now an AAW member. Sixteen of our twenty six members belong to AAW. Lets make it 100%. As said before, the 4 issues per year of the American Woodturner Journal is worth the dues paid.

## Demonstration

**Jack Nash** had a large blank mounted on his Nichols Lathe and proceeded to rough out a large bowl. He demonstrated various tool techniques to members and then allowed members to practice their skills.



Members had to stand back to avoid being attacked by the long tool handle!

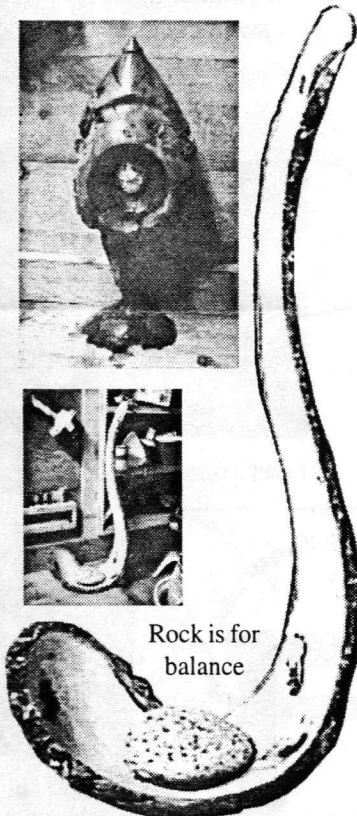
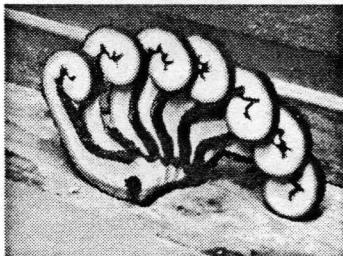
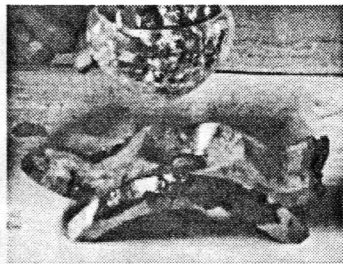
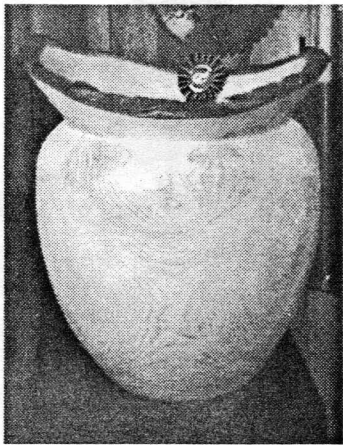


Jack hogs out inside of bowl as members watch



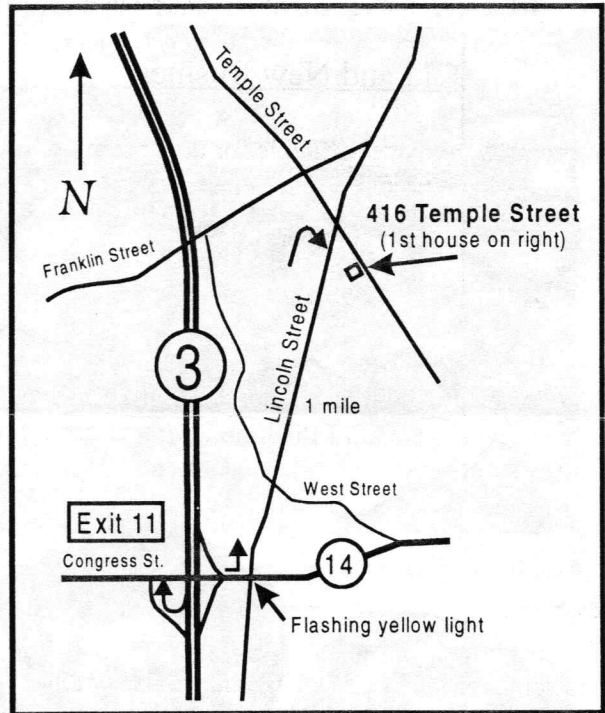
Emilio gives it a try

**Jack Nash** has great artistic and technical skills that he puts to use creating many beautiful, unique, interesting and sometimes awesome pieces:



Rock is for balance

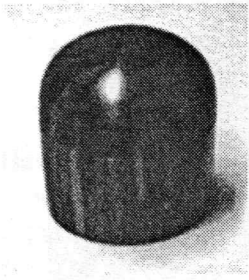
Welcome New Member  
Evelyn Kelley  
HK Hardwoods



Directions to John Murphy's Shop  
Duxbury, MA

Enter Workshop on North side of house. Park in driveway and along Temple Street in front of house.

# Show & Tell

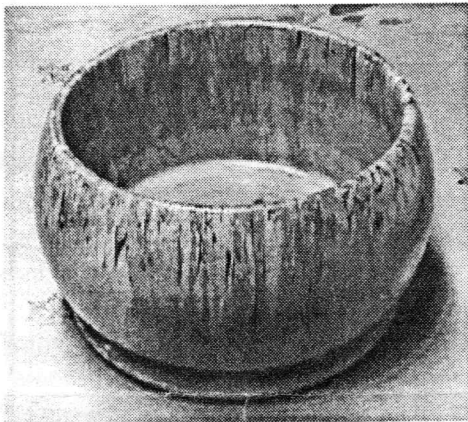


**Ray Cartier** turned this elegant Cocobola box with wood from A frame that supports marble slabs for shipping

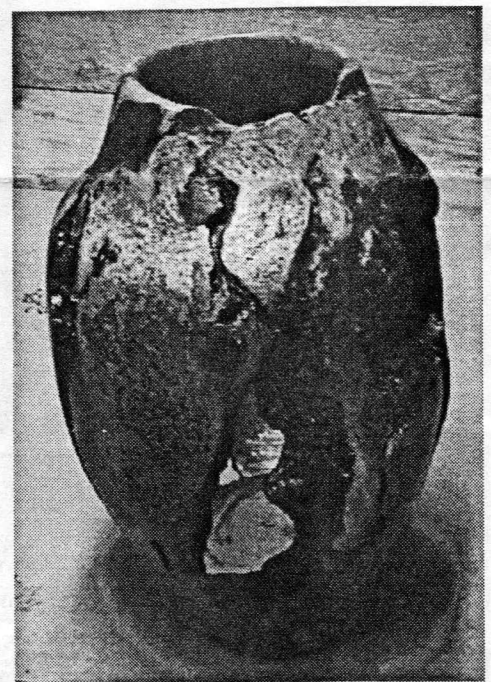
**Richard Friberg** displayed two nice pieces turned from spalted maple with danish oil and wax finish



**Jeffrey Keller** out did himself bringing four fine pieces including a cherry burl bowl and a myrtle box, all finished with Fabulon Urethane



**Steve Sarro** presented another of his great natural lace vases and a walnut goblet that had a wormhole\* the length of the stem (walnut from wood swap at Janet's shop meeting)



\*A possible shortcut through space and time, but has not been proven to exist.