

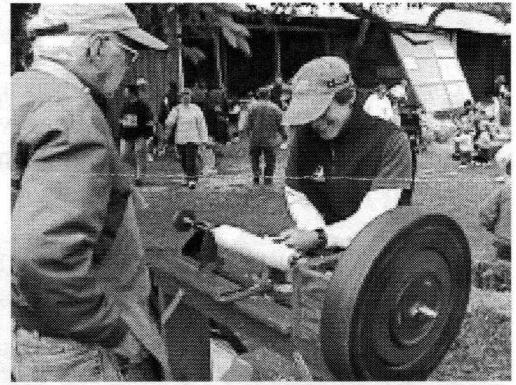
# AS THE WOOD TURNS

October 2001

## We Turned Out For Audubon's Farm Day



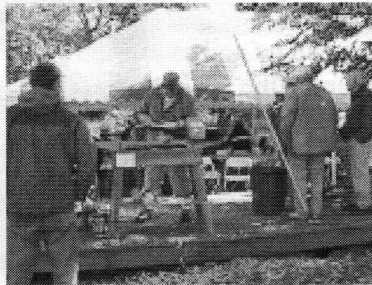
Wally gives a young future turner's hand a helpful hand



Ernie instructs Audubon's Ellyn Einhorn



A casual turner - note hand in pocket



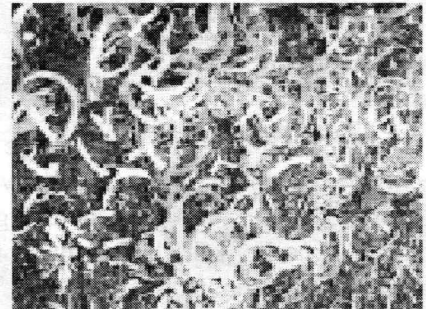
Lathes set up on platform with hay bale seats - Hank demonstrates



A young girl tries Ernie's pedal lathe



Wally thrill's the crowd with flying curly green wood chips



### 2001 MSSW Officers

**President** - Hank Cahill (781) 878-0234  
**Vice President** - Felix Troiano (781) 749-1713  
**Treasurer** - Wally Kemp (781) 871-1390  
**Secretary** - Mal Partridge (781) 843-3883  
**Librarian** - John Murphy (781) 834-1179  
**Newsletter** - Mal Partridge (781) 843-3883



### Next Meeting

Tuesday, October 23rd, 2001, 7:00 P.M.  
At Hank Cahill's *Dust Bowl*  
Refreshments by: Emilio Iannuccillo  
Member Challenge: Christmas Ornament  
See details inside newsletter  
Demonstration: TBD

## Meeting Minutes

The meeting was called to order at 7:05 pm at Hank Cahill's Dust Bowl

### President's Report & General Business

**Hank** introduced guest **Peter Toch** from the *Blue Ridge Woodturners* of Virginia, also guests **Greg Lawton** and **Paul Meehan**. **Greg** and **Paul** have joined **MSSW**.

No correspondence was received. It was agreed that the \$15 gift certificate from Cutting Edge would be raffled off. Christmas ornaments for Signature Gallery due October 1st to 15th..

**Richard Friberg** received a 2nd place at the Quincy Art Festival which had five tents of displays.

Audubon Farm Day to be held on Saturday, September 29th. **Ernie** will bring his foot powered lathe.

Set up for our exhibit at Marshfield Audubon will be Friday November 2nd with reception on Saturday the 3rd. The North Bennett Street School open house is also being held on November 2nd and 3rd.

The AAW 2002 Symposium will be held June 27-30 in Providence, RI. A meeting of local woodturner volunteers will be held Saturday October 27th, 1pm-3pm, at the Biltmore Hotel in Providence.

Treasurer **Wally Kemp** reported \$761 in treasury.

Librarian **John Murphy** reported the library is doing a land office business - 4 books and 3 videos out - no doubt due to our new members taking advantage of the excellent choices **John** has available for learning and improving our woodturning.

**Mal** reported on his Gnome Engine demo at *Ocean Woodturners* in Rhode Island and he has made many additional arrangements for demonstrations while at the Aviation Heritage Festival @ Daniel Webster College, Nashua, NH, including one at New England Air Museum in Ct. next April.

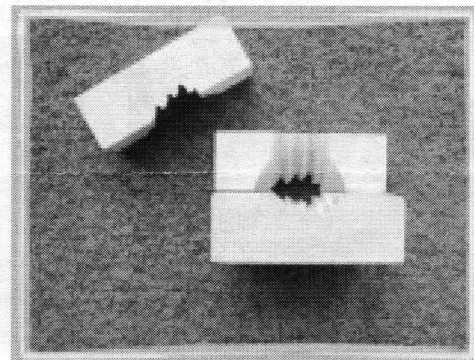
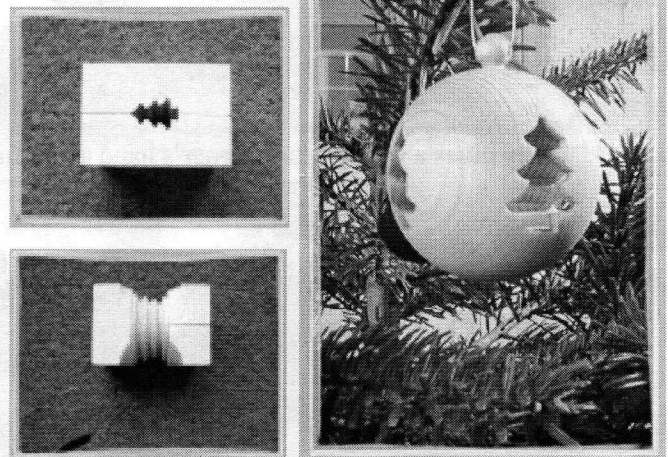
Final full size wooden Gnome Rotary Engine drawings were sent to College Park Aviation Museum.

**Mal** showed a sample of an item produced by a Rapid Prototyping System and a folder was available with technical information on equipment available.

A full color copy of the newsletter was shown to members which was printed by Kinkos by mistake! If members are interested in seeing the newsletter in color, an Acrobat .pdf file can be sent via E-Mail.

The \$15 gift certificate was won by **Angelo Iafrate**. **Greg Lawton** won the monthly member turning raffle; **Frank Iafrate's** weed pot, and will supply the turning for the next meeting.

**Bernie Feinerman** suggested **Mal** check out a German Woodturning site with an interesting turned Christmas Ornament. A good choice for the member challenge:



<http://www.drechsler-verband.ch/Galerie.asp>

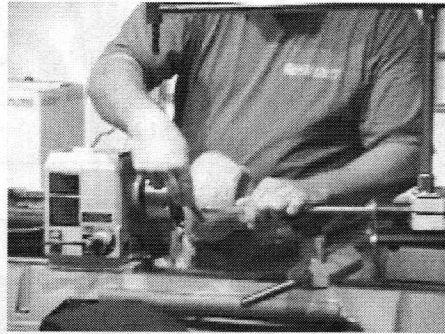
Welcome New Members

Greg Lawton from New Bedford  
&  
Paul Meehan from Norwell

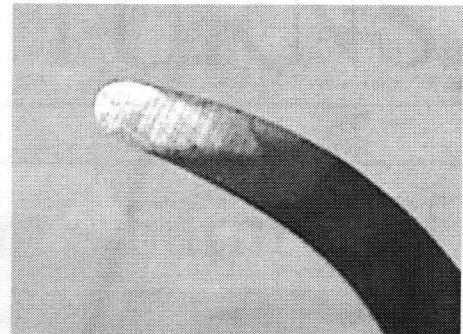
# Laser Guided Hollowing



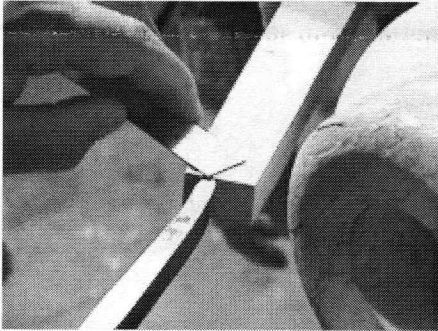
Frank Movitz explains laser guided hollowing system he will demonstrate



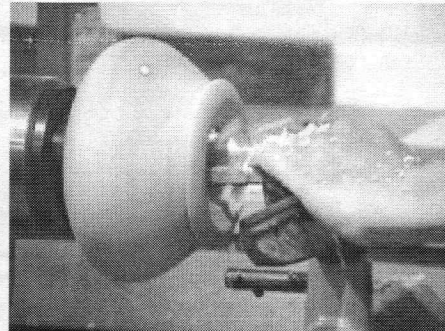
Frank shows how elongated laser spot indicates final wall thickness



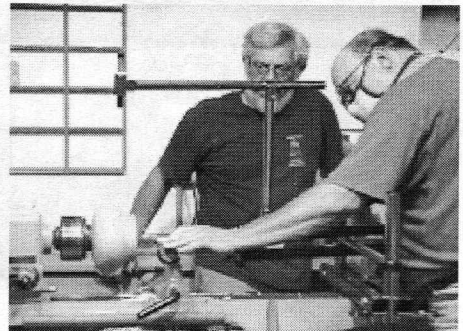
Closeup of hollowing tool tip - don't grind - use diamond stone to raise burr



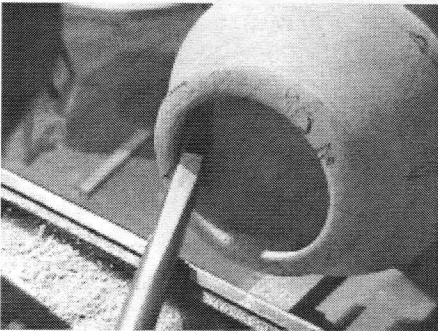
Setting up laser beam outside tool tip for wall thickness desired



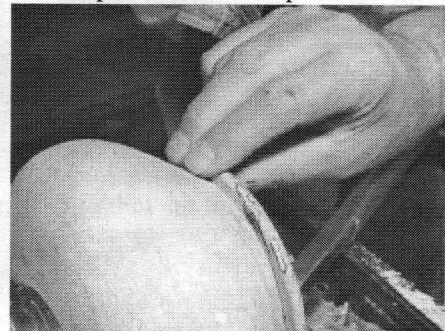
Hollowing proceeding - note laser spot and tool rest position



Laser pointer is clearly shown attached to bracket on tool arm



Final cut being made - elongated laser spot off to left and not in view



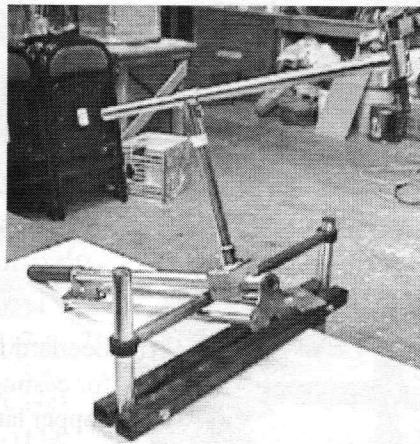
High tech finger/thumb caliper about to check wall thickness



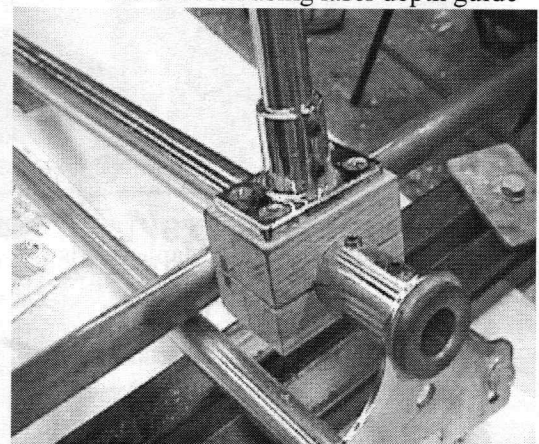
Display of thinwalled bowls turned by Mike Green using laser depth guide



Mike Green explains how he hollowed this large vessel



Mike and Frank fabricated their laser guides from 7/8" stainless boat rail tubing mounted on Kel McNaughton hollowing rigs available from Woodcraft, Woburn



Note: Frank suggests keeping McNaughton rig waxed to prevent catches.

American Woodturner Fall 2001, Page 36, details a home made trapped boring bar/laser system.

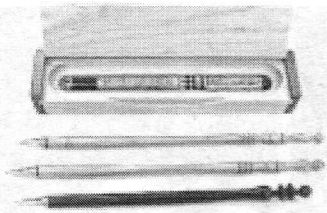
# Show & Tell

September 2001

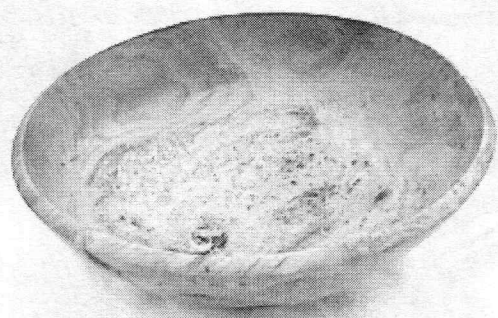


Wally's difficult to fabricate (cut) branch for flower

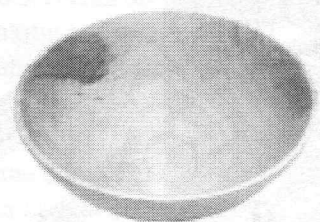
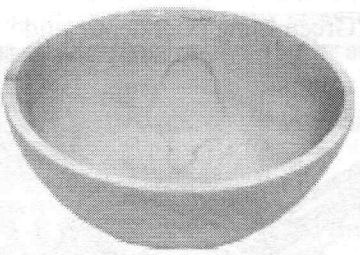
Richard Friberg's Pool Cue



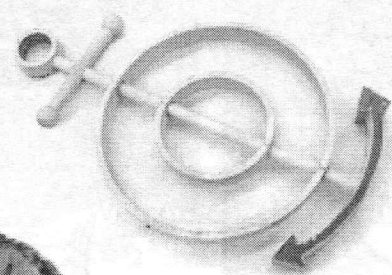
Jeff Keller's pens flanked by a cherry burl deep bowl yet to be finished



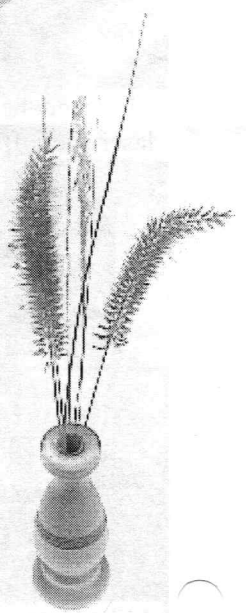
Paul Marks turned this cherry burl at a class in Nova Scotia



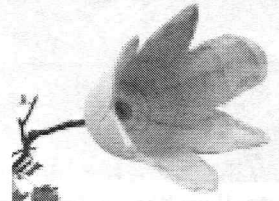
Jeff Gilman's Birch and Maple bowls



Leonard Langevin's pattern for casting bronze detail for copper lantern reproduction



Frank Iafrate's weed pot for raffle



Wally Kemp's wooden flower and Maple burl bowl

