

# AS THE WOOD TURNS

October 2002

## Having Fun At Farm Day



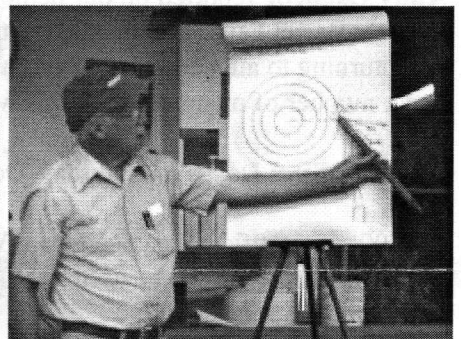
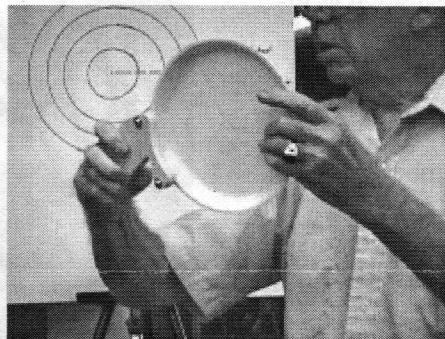
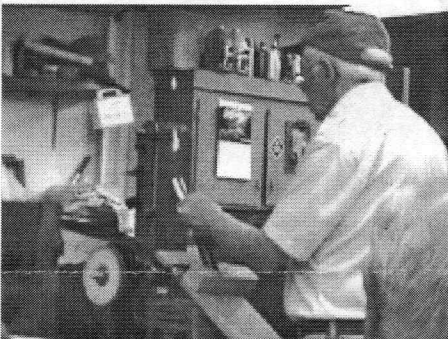
Ernie was frightened when a young tiger showed up at the treadle lathe and turned with ferocious vigor! Gurr---



Interested spectators watch as members turn at Audubon's Farm Day, Marshfield, MA



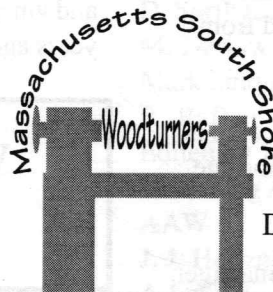
A young lady learns to turn with Ernie's guidance - later she returned and pumped the treadle lathe and turned alone!



Ernie demonstrated tool grinding techniques using a low cost belt sander with a support board behind belt at back of sander (belt moving up). Fixtures from Keith Rowley's *Woodturning A Foundation Course* and 2 pin templates to set tilt of grinding platform as described in *Woodturning Techniques* by Mike Darlow were also demonstrated.

### 2002 MSSW Officers

**President** - Hank Cahill (781) 878-0234  
**Vice President** - Felix Troiano (781) 749-1713  
**Treasurer** - Wally Kemp (781) 871-1390  
**Secretary** - Mal Partridge (781) 843-3883  
**Librarian** - John Murphy (781) 834-1179  
**Newsletter** - Mal Partridge (781) 843-3883



### Next Meeting

Tuesday, October 22, 2002, 6:30 P.M.  
At Hank Cahill's *Dust Bowl*  
Refreshments by: Hank Cahill  
Member Challenge: Christmas ornament  
Demonstration: Member turning demonstrations  
bring tools and fixtures for sharpening

## Meeting Minutes

The meeting was called to order at 7:00 pm at Hank Cahill's Dust Bowl

### President's Report and General Business

**Hank** received correspondence from AAW requesting early renewals. They are looking for a new editor for American Woodturner journal. Their new E-mail address is woodturner@qwest.net. Membership applications were made available to new members who were advised of the benefits of joining AAW.

Members were again reminded to vote for **Angelo**, a candidate for the AAW board of directors.

**Wally** reported \$1174 in the treasury.

**John Murphy** reported that 5 videos and 8 books are checked out of the library. He has been librarian for over three years and would appreciate a member taking over as librarian in November. A listing of material available is included in this newsletter.

**Mal** produced a refreshment list and members were asked to sign up for future meetings.

**Andy Osborne** reported on our demonstration at the Cracker Barrel Fair. Five members introduced woodturning to attendees. There was a lot of interest and a number of membership forms were taken.

Audubon Farm Day is on Saturday, October 5th.

A \$100 gift certificate received from Woodworkers Warehouse in Avon will be used to purchase a set of Sorby micro turning tools.

**Wally's** three legged turned board seated chair will be shown at *The Chair*, an exhibition curated by Sam Maloof, October 12 - November 23, 2002 at Krikorian Gallery, 25 Sagamore Road, Worcester, MA. Thirty chairs from throughout the world were selected from hundreds of entries. Congratulations **Wally!**

**Mal** brought to our attention that the Jet Mini Lathe is on sale for \$199 at Rockler's, Mass.Ave., Cambridge. The sale ends October 6th.

Woodcraft, Woburn is looking for an assistant manager.

A discussion about a possible visit to the Old Schwamb Mill in Arlington to see oval frames turned was held. The logistics of setting up a visit were presented. In lieu of a visit checkout their web site for an audio and visual tour: <http://www.oldschwambmill.org/main.html>

For future demonstrations outside, **Angelo** has offered to loan us a 10x10 easy-up canopy with 3 side curtains.

**Jim Taralli** will be demonstrating bowl nesting at our November meeting.

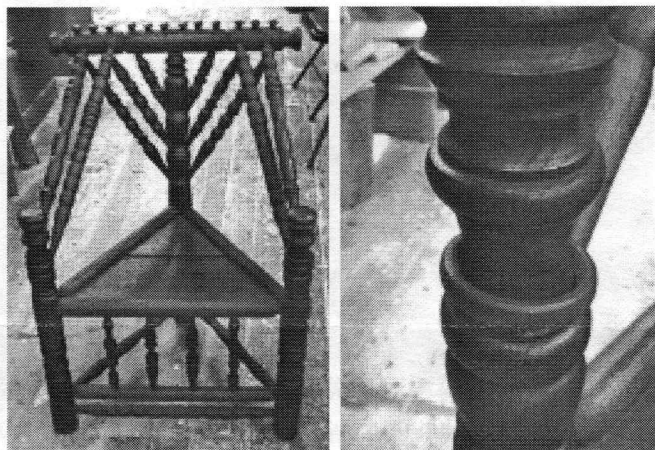
Suggestions for future demonstrations included having **Johannes Michelsen** (turned hats) on a Saturday, and **Rich Friberg** (Miniature turned hats) at a meeting.

A safety shield for our demonstrations was discussed.

**Mal** will print tent cards for members exhibiting at Audubon. Setup is Saturday, November 2nd. at the Marshfield Audubon Headquarters location.

A wood swap raffle was held at the end of the meeting.

## Wally's turned chair



Wally's 3 legged English chair with captive rings detail. Turned from red oak with pegged joints - no glue. Iron and vinegar black finish plus black shoe polish. Built 8 years ago. Pattern from book *Early English Furniture*.

Welcome New Member  
Ken Stevens from Milton

# Massachusetts South Shore Woodturners Library

## Videos

Title	Turner/publisher	Copies
Sharpening, Carving & Turning Tools	Jim Kingshott	
Turned Boxes, the Basic Box	Ray Key	2
Beyond Wood, Portrait of an Artist	Cummings	
Decorative Techniques	Sorby	
Metal Spinning	Sorby	
Starting Out Woodturning	Sorby	
Woodturning	Raffan	
Natural Edges & Hollow Forms	Stott	
Finishing For Woodturners	Stott	2
Introduction to Ornamental Milling		
Turning Wood	Jordan	
Bowl Turning	Dell Stubbs	
Tips For Turners	Ellsworth	2
Bowls & Tool Grinding	Ellsworth	
Audubon Center Woodturning Show		
Unique Carving & Coloring Technique	Jacques Vesery	
Hollow Turning	John Jordan	
Turning Unusual Materials	Bonnie Klein	
Turning Bowls	Dennis White	

## Books

Skilled Work	Renwick Gallery
Useful Beauty	Dick Sing
Bandsaw Handbook	Duginske
Turning Wood	Raffan
Lathe Turned Objects	Woodturning Center '97
Make Money From Woodturning	Philips
Woodturning Projects	K. Rowley
Turning Wooden Toys	T. Lawrence
The Encyclopedia of Wood	
The Art of the Lathe	Spielman
Woodturning Techniques	Woodturning Magazine
Practical Tips for Woodturners	Woodturning Magazine
The Craftsman Woodturner	P. Childs
Face Plate Turning	Woodworking Magazine
Woodturning, A Foundation Course	K. Rowley
Carving On Turning	Chris Pye
The Art of Woodturning	K. Lenke
Woodturning Wizardry	D. Springett
Woodturning Methods	M. Darlow
Sculpting Wood	Mark Linquist
Turned Bowl Design	R. Raffan
Useful Woods of the World	Edited by J. Flynn & C. Holder
Chainsaw Safety	Gardening Aids
Nature Takes a Turn	AAW
Hand or Simple Turning	J. J. Holtzapffel
Lathe Turned Objects	A LeCoff / Wood Turning Center

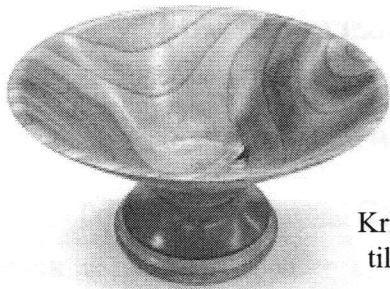
**MEMBERS**

**THIS LIBRARY'S FOR YOU**

**USE IT  
BUT DON'T  
ABUSE IT**

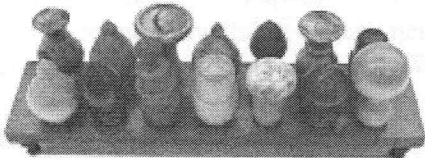
# Show & Tell

## September 2002

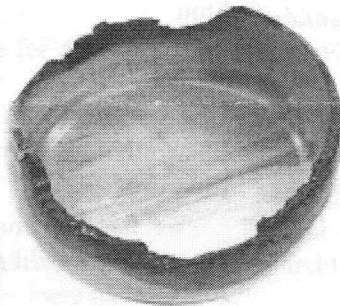
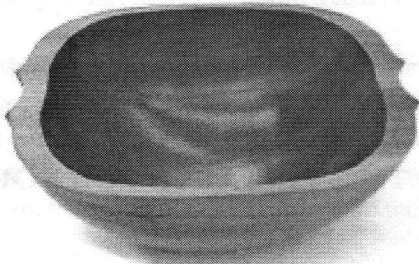


Kris's walnut tilt top table

Hank's Paulownia (empress tree) bowl w/cherry-maple base



Jeff's wine stoppers on stand and maple natural edge bowl



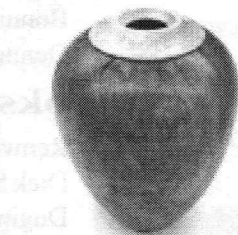
Wally's inside out turning less stand that he displayed at AAW symposium



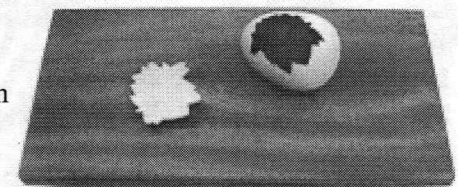
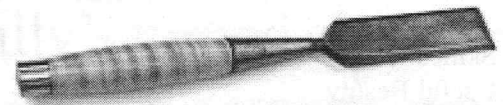
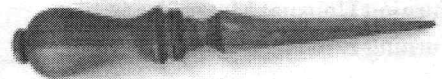
Ken Steven's interesting cherry bowl and rattle



Kris Ellis's cedar bird house



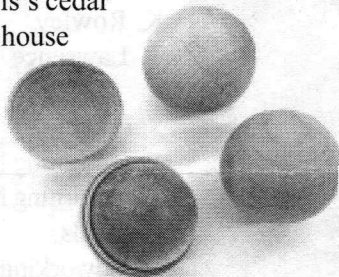
Rich's maple burl vase with birds eye maple rim



Richard Friberg's walnut opener, chisel handle and wooden egg, a 2nd place at Quincy Art Festival



Mal's walnut letter opener



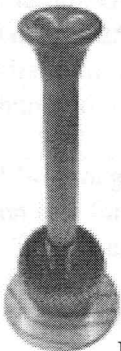
Angelo's birch and cherry ball boxes for magic trick



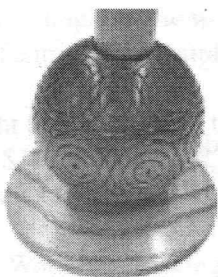
Lenny Langvin's letter opener assortment with "ivory" trim



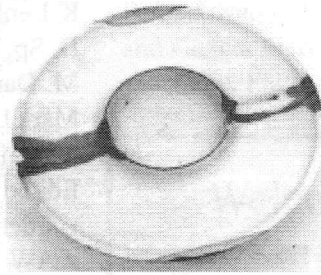
Bob Sutter's English brown oak platter



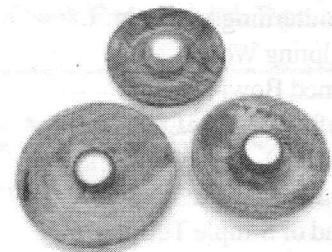
Jim Flannery's vase and closeup of base



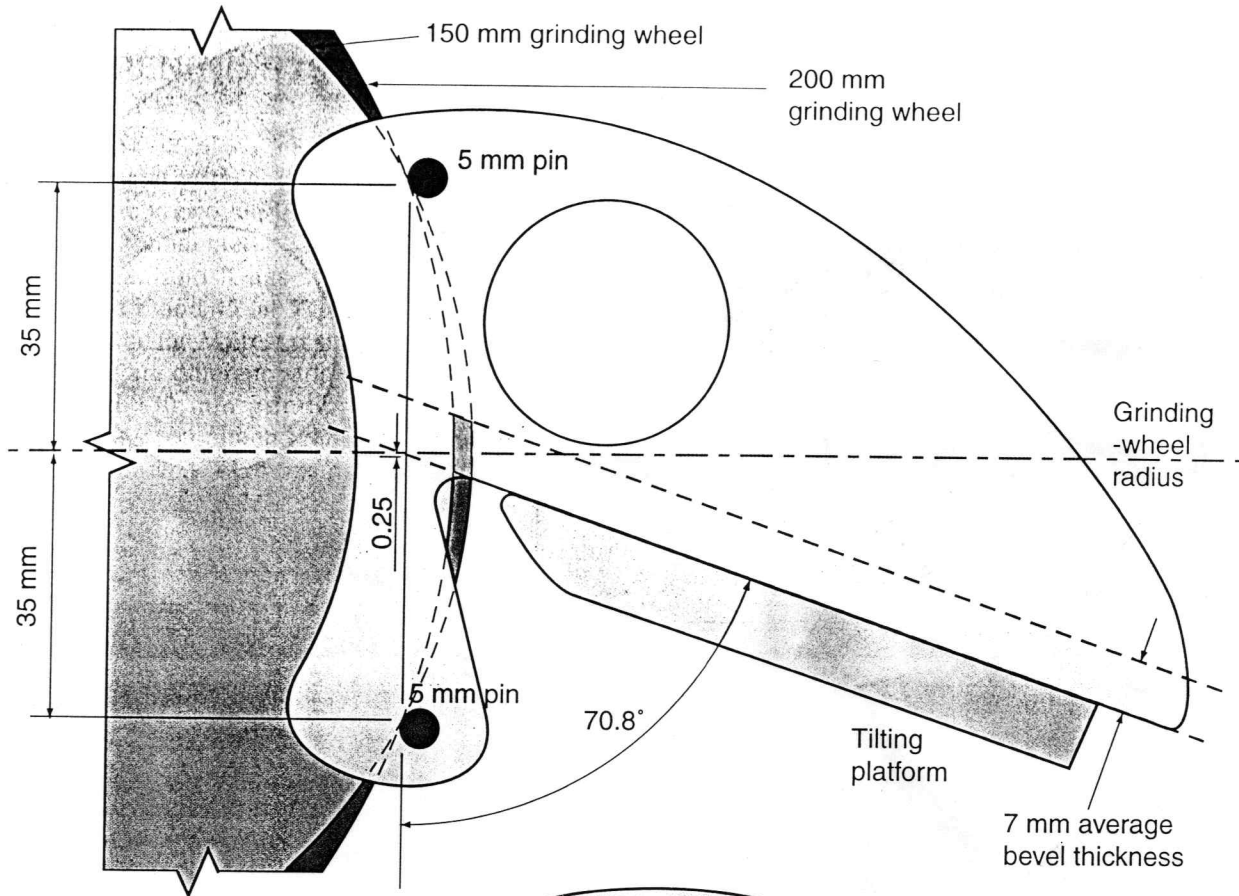
Ken Lindgren's Australian pod-nice end grain



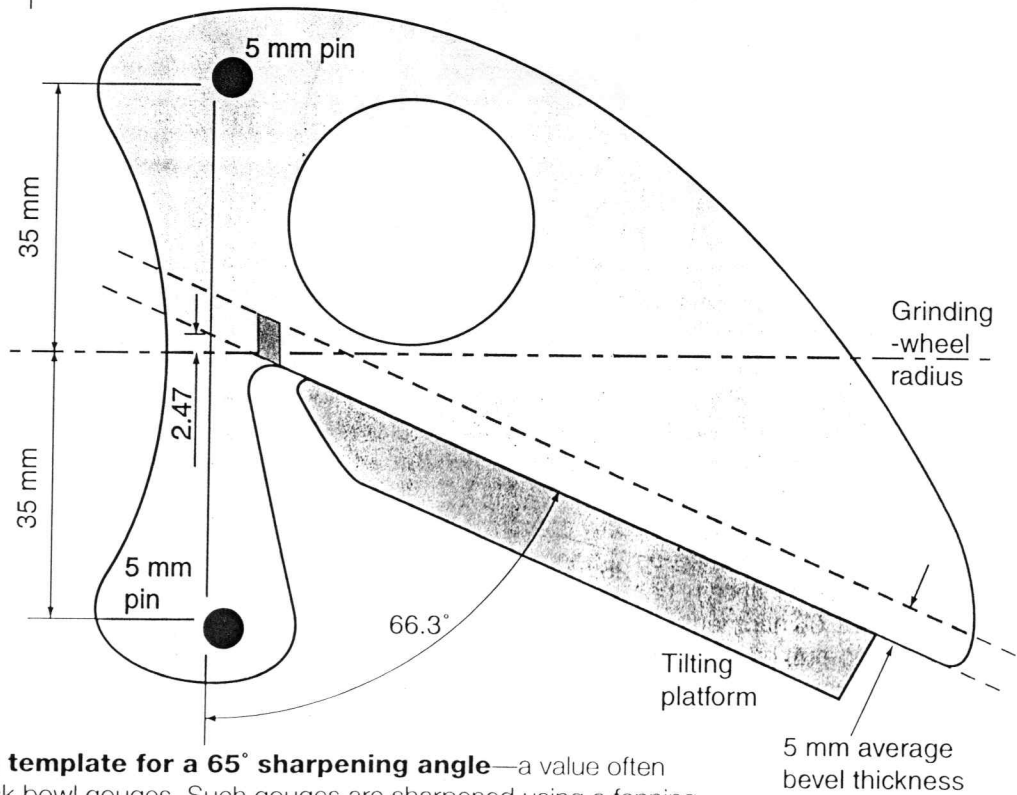
Andy Osborne's hickory plate



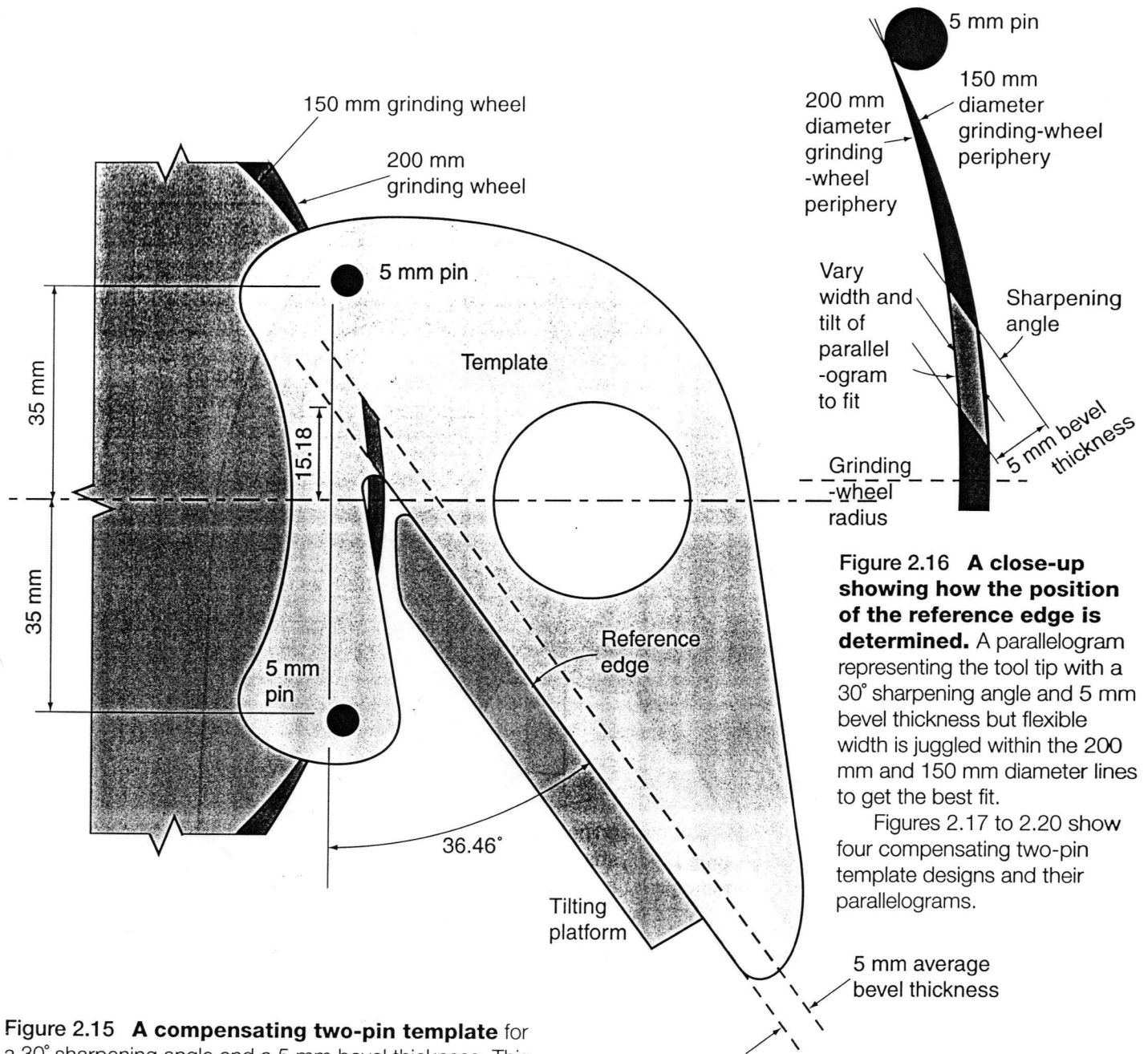
Emilio's tea lights for his daughter's bazaar



**Figure 2.17 A compensating two-pin template for scrapers** with a sharpening angle of  $70^\circ$ . 7 mm is used for the average blade thickness because most scrapers are either 6 mm or 8 mm thick. You can also use this template for thinner scrapers because the sharpening angle ground on them will only be a little bigger.



**Figure 2.18 A compensating template for a  $65^\circ$  sharpening angle**—a value often specified for the tip of swept-back bowl gouges. Such gouges are sharpened using a fanning action (figure 2.45). The average bevel thickness for swept-back bowl gouges is about 5 mm, but as the nominal sharpening angle at the tip is big, variations in bevel thickness will not significantly alter the sharpening angle ground.



**Figure 2.16 A close-up showing how the position of the reference edge is determined.** A parallelogram representing the tool tip with a 30° sharpening angle and 5 mm bevel thickness but flexible width is juggled within the 200 mm and 150 mm diameter lines to get the best fit.

Figures 2.17 to 2.20 show four compensating two-pin template designs and their parallelograms.

**Figure 2.15 A compensating two-pin template** for a 30° sharpening angle and a 5 mm bevel thickness. This template retains the correction for bevel thickness of the preceding template. Table 2.4 shows that it also almost eliminates variations in the sharpening angles ground caused by wheel wear, but that the gain in accuracy over the preceding template is small for sharpening angles bigger than 30°.

The difference between this compensating template and that in the preceding figure is that the straight edge which references the platform is no longer at 30° to the line of the two reference pins, and is also higher relative to them. The exact position of this edge is determined by trial and error for each combination of sharpening angle, bevel thickness, and maximum and minimum grinding wheel diameters. The method is shown in the next figure.

**Table 2.4 The sharpening angles resulting from different bevel thicknesses and wheel diameters. The nominal sharpening angle is 30° .**

Bevel thickness	Grinding-wheel diameter	
	200 mm	150 mm
3 mm	30.8°	31.6°
5 mm	30.0°	30.1°
7 mm	28.1°	28.0°