

---

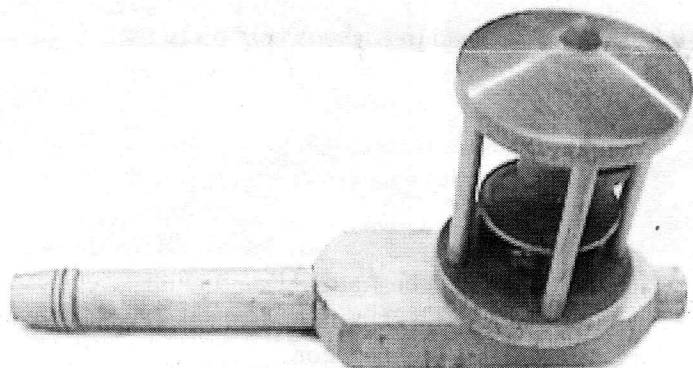
# AS THE WOOD TURNS

---

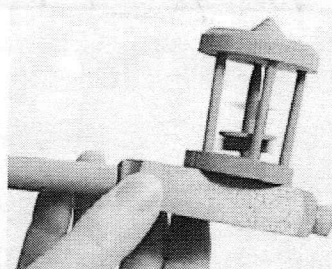
October 2006 Issue 113

---

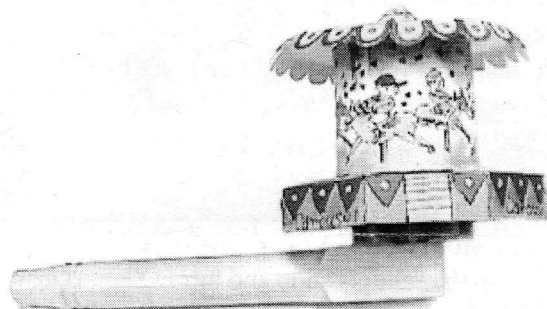
## They didn't give a TOOT, but they were Animated!



Jeff Keller made a duplicate of the Member Challenge, a 1900 German wooden whistle with a spinning bird in cage.



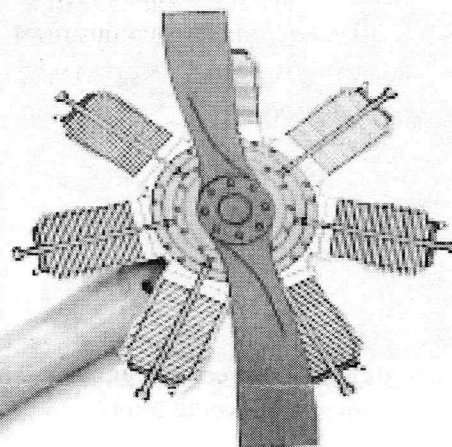
Original German toy



Mal's Whistle with Carousel



VELCRO for Posters used to hold animations



Mal couldn't resist animating the Gnome Rotary Engine

### 2006 MSSW Officers

**President** - Hank Cahill (781) 878-0234

**Vice President** - Richard Friberg (508) 378-2436

**Treasurer** - Wally Kemp (781) 871-1390

**Secretary** - Mal Partridge (781) 843-3883

**Librarian** - Leonard Mandeville (508-586-7679)

**Newsletter** - Mal Partridge (781) 843-3883

**Web site:** <http://www.mssw.sitelinker.org/>



### Next Meeting

Tuesday, October 24, 2006, 7:00 P.M.

At Hank Cahill's *Dust Bowl*

Refreshments by: Jim Flannery

Member Challenge: Bowl of Fruit -

See Woodwork Magazine December 2006

Demonstration: Ron Knapp

## Meeting Minutes

The meeting was called to order at 7:00 pm at Hank's  
President's Report and General Business

Guests present were Bob Trucchi from Abington, who has become a member and Brian Conklin from Hull.

Hank received Totally Turning 2006 information. Inly Arts Festival, Scituate, is looking for a woodturner to demonstrate at the Festival, October 15th.

Mal reported that our AAW Chapter listing has been updated on the AAW web site. A binder was circulated with photos received from our woodturning friend, John Foster, showing turnings and meetings of his club in England. We send them our newsletter and they enjoy seeing what we are doing. It was interesting to see that they also use the Black and Decker style Workmate benches, as we do, for there demo lathes.



Mal also had a catalog and business cards for The Art Experience in Avon, a large discount store for Artist materials and Silkscreening Supplies. They have many items of interest to woodturners.

Andy reported on the Yankee Woodturning Symposium. A roster of all committee members with details is available. Grant letter is being put together by Ken and Andy for Machinery and Equipment. Rotations are filled with an All Star Cast!

Our Treasurer, Wally Kemp, reported \$548 in treasury.

Lenny the Librarian reported that a few Videos are missing and requested if a member has them please return them. If a member borrows a video or book and the Librarian is not at meeting, please leave a note.

**Hand's On is Saturday, October 21st. at 10am.** As suggested by Jeff, the project will be bowl turning, so bring your wood, tools and questions for help.

Farm Day in Marshfield is September 30th. We will be demonstrating and Ernie will bring his treadle lathe.

Jeff also received a go ahead to make available tee shirts and golf shirts with MSSW logo for members.

Ken will be demonstrating October 22nd at a Fuller Craft Museum Reception between 2 and 5 pm. Members are welcome to come and help.

The Brolly bird project was reviewed by Ken. "A nest is in process and eggs are needed from members". No sooner had he said that when Paul O'Neil promptly produced 7 wooden eggs! That's Brolly magic.

Various members reported on recent shows and demonstrations with sales results, not always good.

Betty Scarpino stayed at Andy Osborne's house for a local weekend demonstration. Ken said that she makes you feel at ease and Hank proposed she demonstrate at a Saturday Hand's On session.

Angelo was asked about the need for P.R. for Woodturning. A discussion about the AAW Professional Outreach Program (POP) and how it could better serve to promote woodturning. The Fellowship Grant was also discussed and how it could be better used. MSSW Professional turners should visit the POP at the AAW web site to see what it offers. AAW has a Sponsored Insurance available for your personal business activities. Check it out.

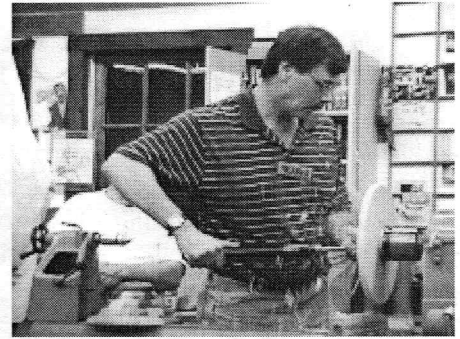
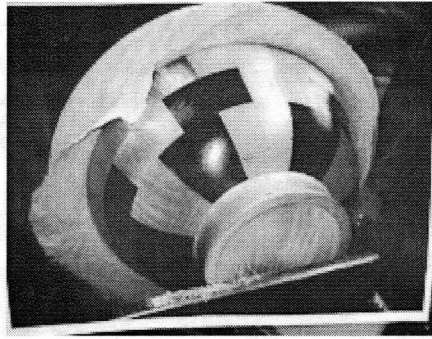
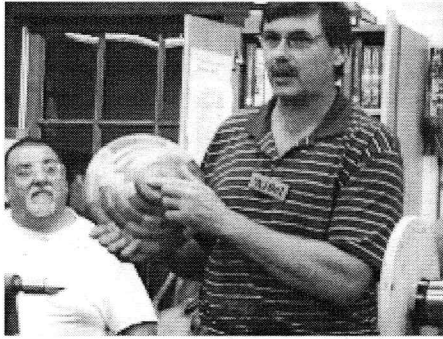
Brian Conklin from Hull H.S. gave an enthusiastic presentation on the schools shop and turning equipment. He welcomed members to visit. He is there in the evenings at times. Members have been sent an E-Mail with Brian's contact information.

Jeff proposed a member group tour on a Saturday to the Holly Hill Farm in Cohasset which has a tool shop with metal and wood lathes driven by overhead belts. He has been on the tour and recommends it.

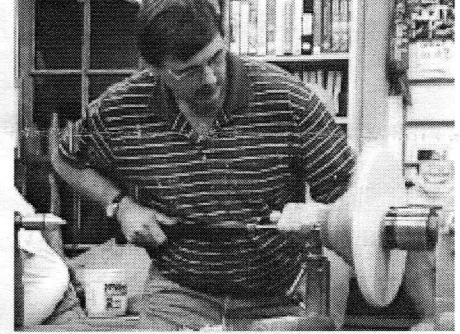
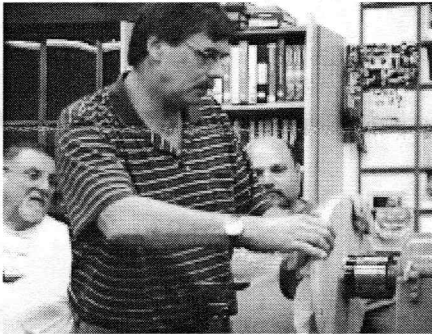
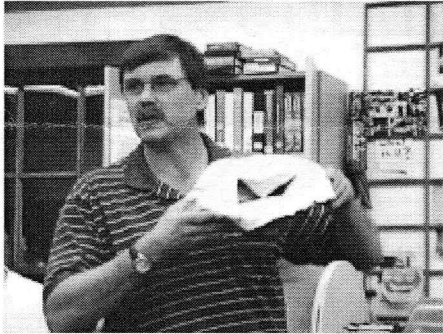
Philip Meader, from Medfield, has an Air Cleaner to be given away.



## Nigel Demonstrated Jam Chucking



Use a jam chuck to finish bowl bottom. Turn a recess in scrap wood or plywood mounted on faceplate to size of turning diameter, allow a little space for a cloth for friction fit. Jam chucks self center workpiece.



Use cloth or other soft material to protect turning and provide snug fit. The tailstock or Saran Wrap can be used to hold piece in place if desired.

Finish turn bottom taking light cuts.

## Audubon Farm Day 2006



Ernie helps a young girl turn on his treadle lathe. Bob Allen and John Murphy entertained the adults.

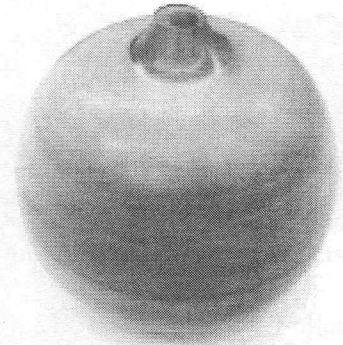
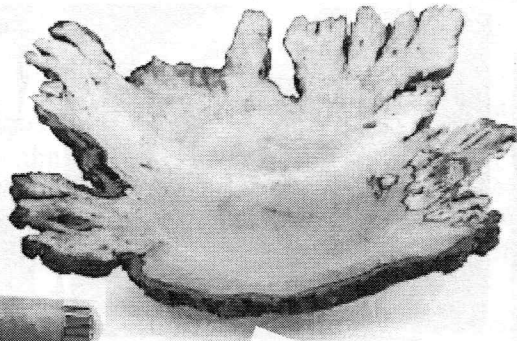
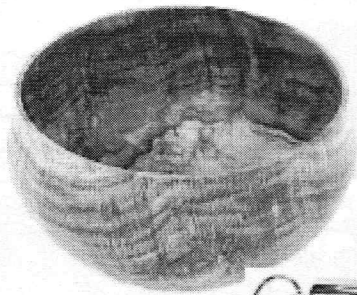
## Corn Festival 2006



Mike Wells, Ian Manley, Rich Friberg, Bob Francis, Ed Morey and Jeff Keller manned the booth. Ian Demonstrates.

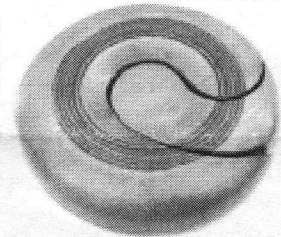
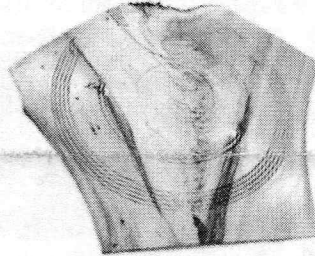
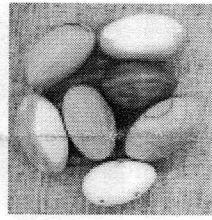
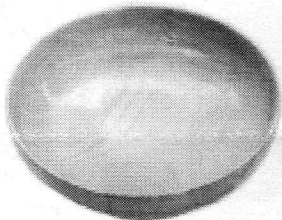
# Show & Tell

September 2006



Nigel's thin oak burl bowl, flash memory keychain and thick cherry burl piece

Bob Sutter's Spanish cedar ceramic form in wood

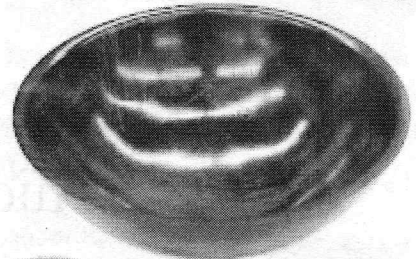


Paul O'Neill's maple bowl and eggs to cover cracks!

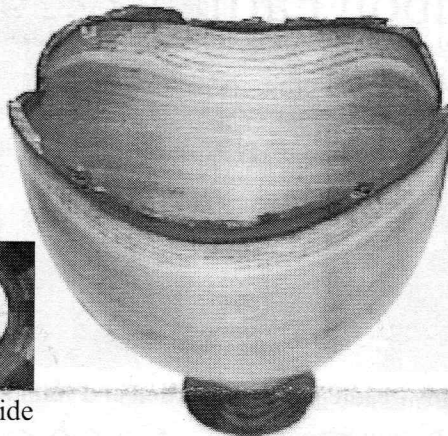
Hank's double sided crotch and 2 piece "art" per Betty Scarpino



Jeff's pool cues, note how cherry has darkened over 6 months



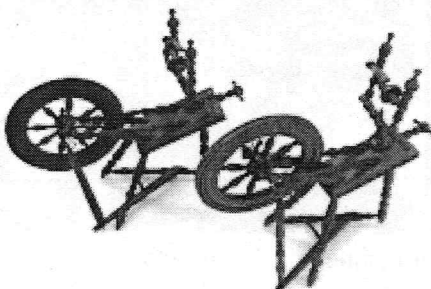
Andy's dyed bowl and maple onion burl in a pot



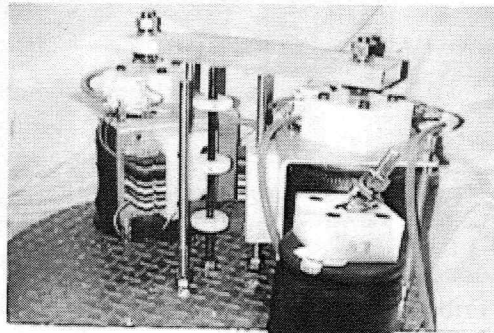
Bottom inside

Ian's 380 piece segmented turning for 1983 winery in NY Hudson Valley

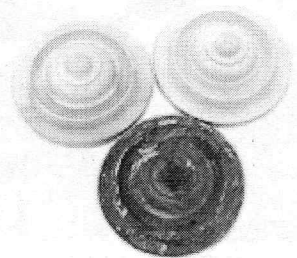
Ken's sassafras bowl and Rudy Osolnik style dyed and blended candlestick



Lenny Langvin made a duplicate of 100 year old spinning wheel



Don's Flight Simulator motion platform mockup



Richard Friberg's NBBS pieces for Corbels