

---

# AS THE WOOD TURNS

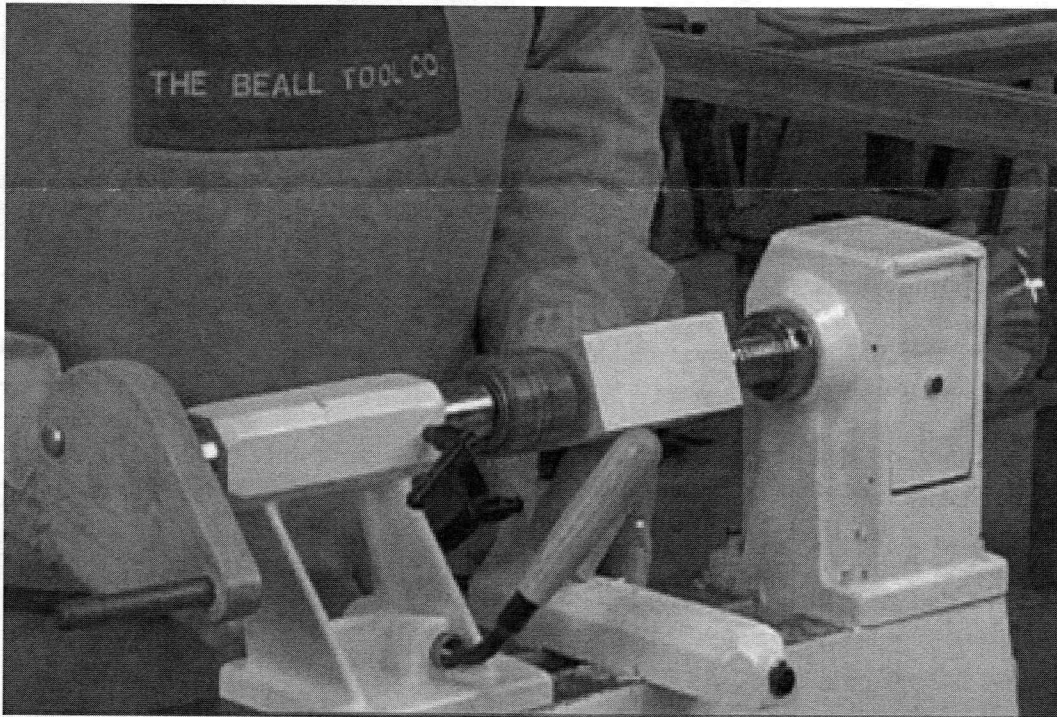
---

October 2007 Issue 124

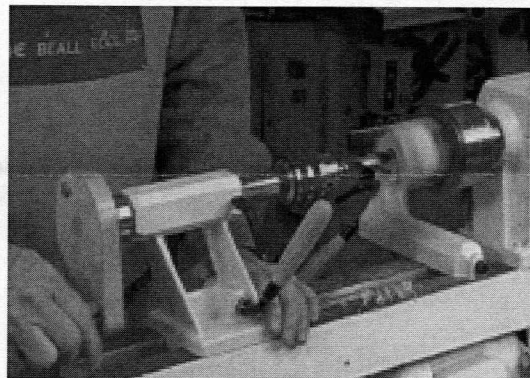
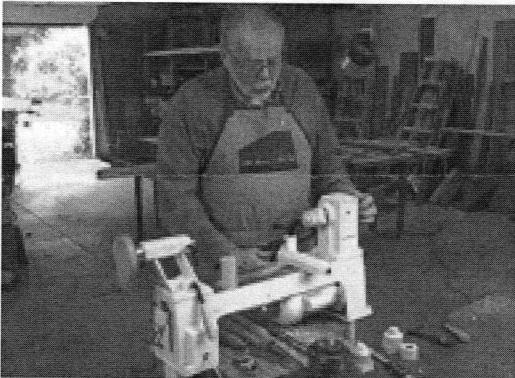
---

## J.R.Beall's Jet Mini-Lathe Enhancements

Apply them to your Mini-Lathe



See them on Beall Tool Demo DVD



### 2007 MSSW Officers

**President** - Hank Cahill (781) 878-0234  
**Vice President** - Richard Friberg (508) 378-2436  
**Treasurer** - Wally Kemp (781) 871-1390  
**Secretary** - Mal Partridge (781) 843-3883  
**Librarian** - Leonard Mandeville (508-586-7679)  
**Newsletter** - Mal Partridge (781) 843-3883  
**Web site:** <http://www.mssw.sitelinker.org/>



### Next Meeting

Tuesday, October 23, 2007, 7:00 P.M.  
At Hank Cahill's *Dust Bowl*  
Refreshments by: Richard Friberg  
Member Challenge: Candlesticks -  
suggested by Charlie Rosen - see Page 2  
Demonstration: TBD

## Meeting Minutes

The meeting was called to order at 7:00 pm at Hank Cahill's Dust Bowl  
President's Report and General Business

Guests present were Al Francendese, who has become a member, Jerry Carlson from Pa. and Joe Warsgerber.

Hank received no correspondence this month.

Sidney Katz volunteered to supply refreshments for November. We need year 2008 volunteers to come forward.

Mal passed around the Items of Interest for Member Review binder with photos of Corn Festival by Jim Denker and pictures of Canadian turnings from Andy and other misc. woodturning items.

The books *500 Bowls and 500 Boxes* were available at Barnes & Nobels for 50% off.

Mal suggested a discussion or demonstration topic - "How NOT to Turn". Any volunteers to demonstrate?

Wally reported \$2788 in Treasury. He announced Audubon Farm Day is Saturday, September 29th. Member demonstrators should be there at 9:30 PM. Jeff, Bob, Wally and Bill Dooley volunteered.

Lenny the Librarian reported on new items added to library including a video clip by Jim Denker of Nigel's Summer Hand's On party. Copies of CDs were received from Sidney.

Jeff reported on the Corn Festival which was held in the rain which didn't stop until 2PM. There was only one sale! Our Norwell Library exhibit has been removed.

Bob Sutter reported that the MFA has an exhibit encompassing works of art in a variety of media featuring nearly 120 highlights from the distinguished collection of the Wornicks of California.

Ernie visited an 1830's farm in New Hampshire - 300 acres and one mile from the road!

Ken reported sales only covered the booth fees at the shows he has had a booth.

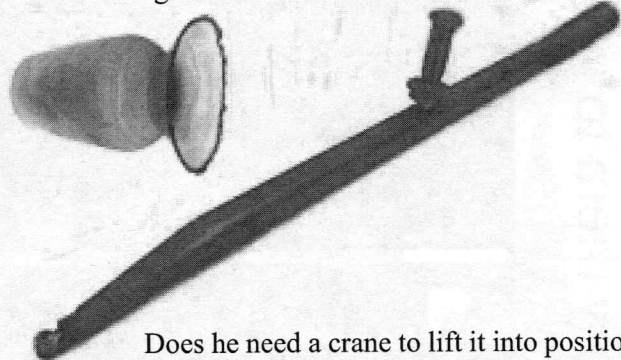
Jeff had a catalog of woodturning and carving tools from Ashley Iles, Ltd. from England. A set of the tools was for sale at our last meeting. He purchase a 1 1/4" skew for \$27 plus \$6 Shipping. Their tools are available in Carbon Steel and High Speed Steel, and the prices are reasonable.

Joe Ewart is looking for a General Lathe for the North Bennet Street Schools Cabinet and Furniture Department. He asked for a donation from MSSW and the members agreed to donate \$300. He is also applying for a Grant from AAW and other sources.

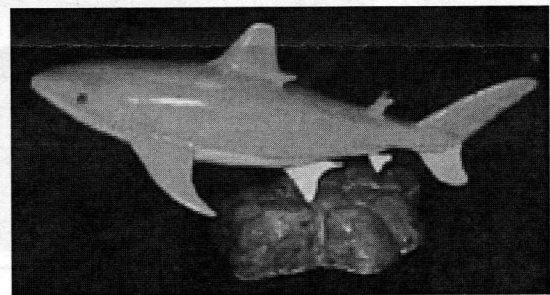
Hank talked about future demonstrators. Janet Collins has told him Alan Lacer can demo on Thursdays only. Ken asked what turners would we like to see. The response was: Mark St. Leger, Jimmy Clewes, Rick Angus, David Belser and Andy Motter. Demonstrations on Saturdays, as in the past, work best.

### Hand's On Saturday, October 20th at 10:00 am.

Nigel's massive boring bar he made from square steel tubing. It has a machine tool bit as cutter.



Does he need a crane to lift it into position?

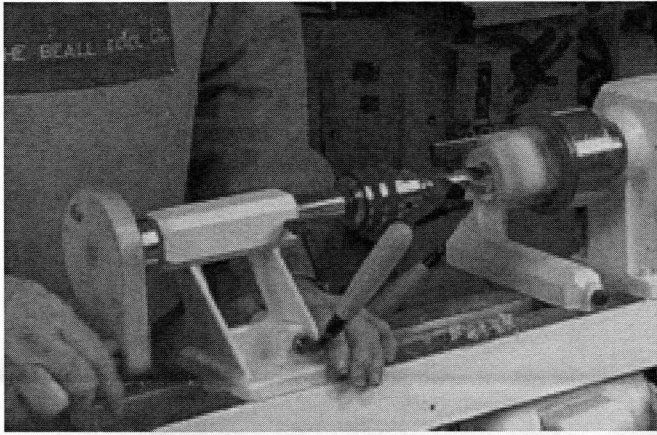


Hank's carving for a special needs young girl

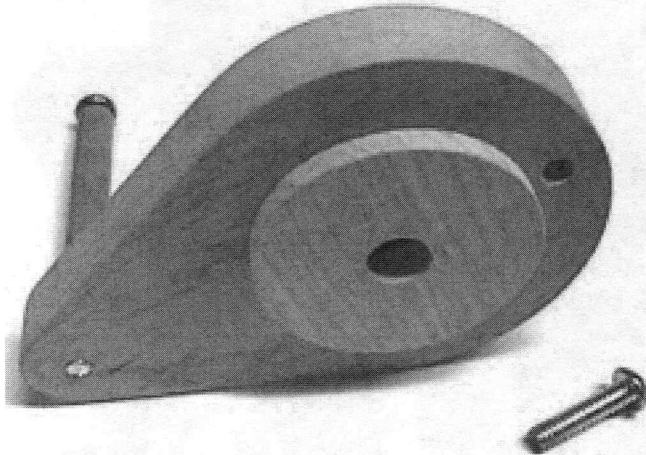
### Member Challenge web site:

<http://www.alaska.net/~atftb/candle-aaw.htm>

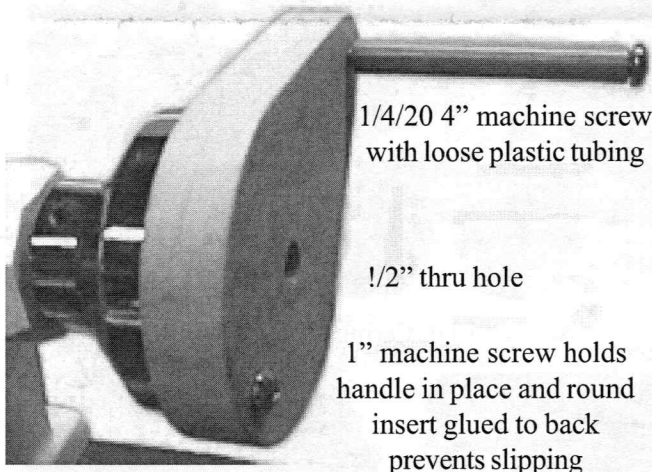
# Mal's Version of J.R. Bealls Jet Mini-Lathe Enhancements



New handwheel helps when drilling, using hand rather than fingers on small handle.

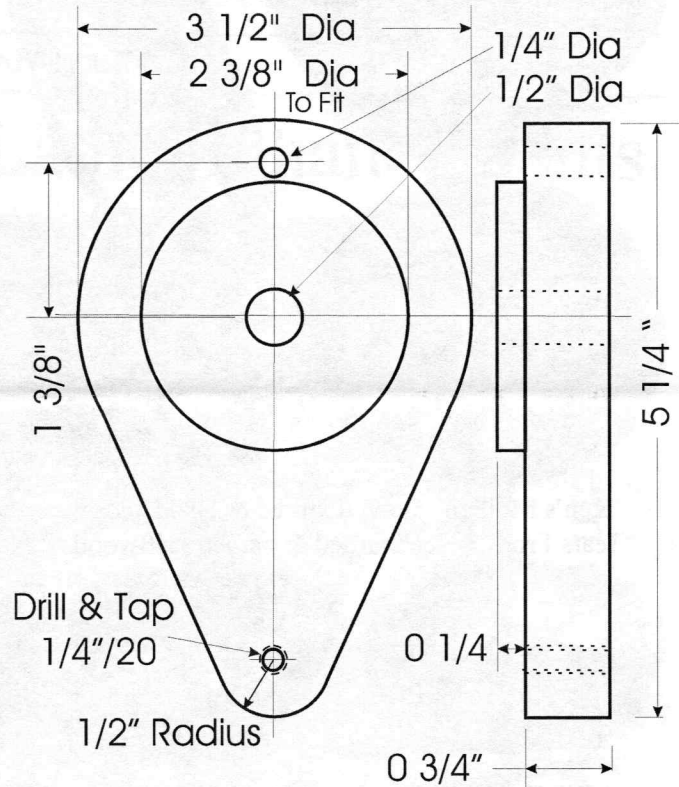


Handwheel mounts with 1/4/ 20 x 1" machine screw  
( Remove existing handle with wrench)

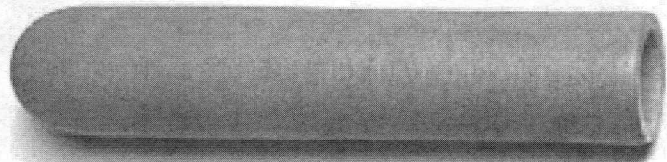


Tailstock Handwheel extension

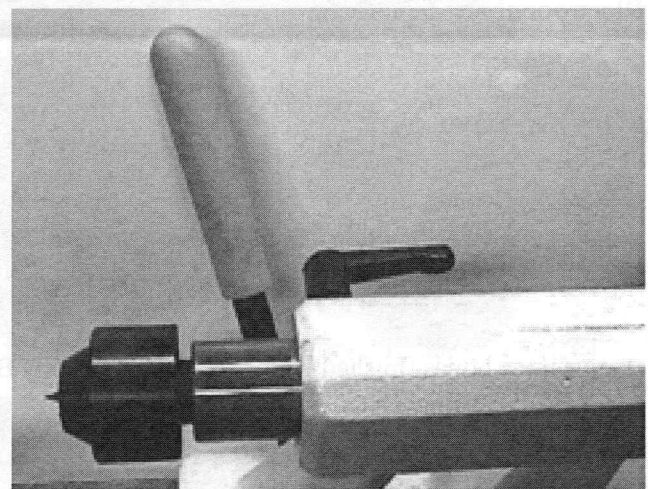
Per phonecon, 10/12/2007, with Beall Tool Company, permission was given to use images from Tool Demos DVD.



Use a paper template to check fit with your Handwheel



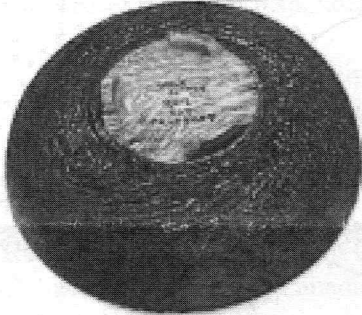
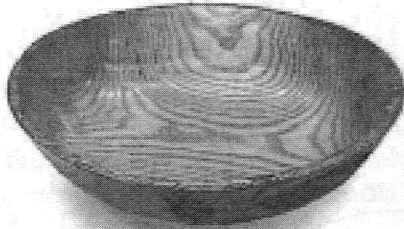
Turned Handle extension with 1/2" hole (to fit).



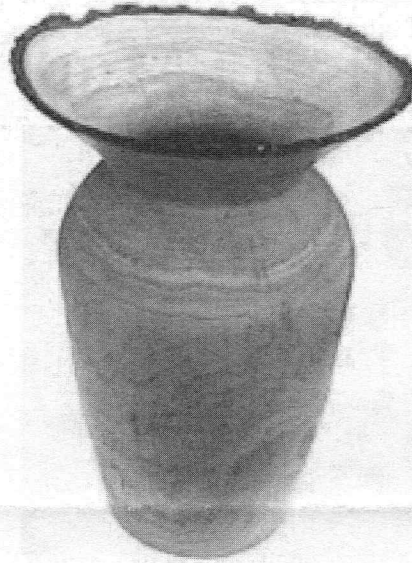
Handle extension in place on tailstock lever

# Show & Tell

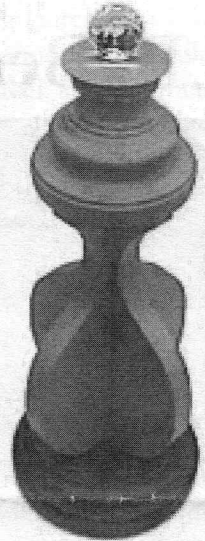
September 2007



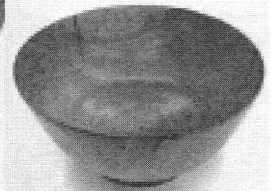
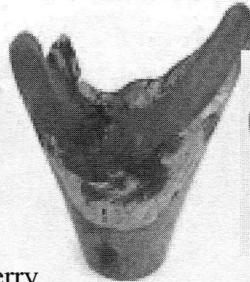
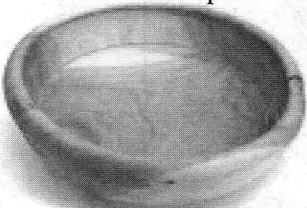
Ken's Mulberry bowl textured & Dyed and "Tears From Space" turned & carved driftwood



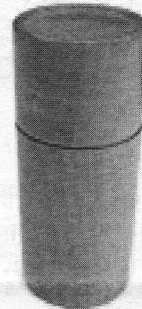
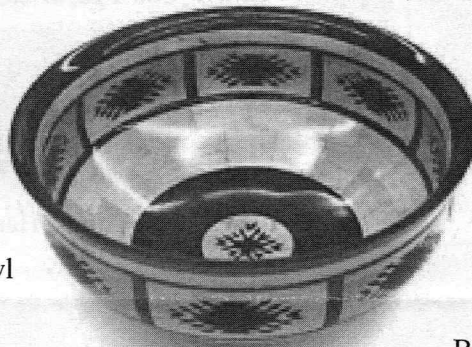
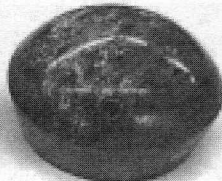
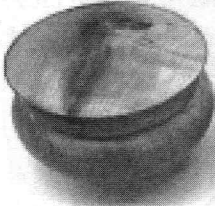
Nigel's large Cherry vase - used a large boring bar he made to hollow



Bob Sutter's turning representing a 3D shape

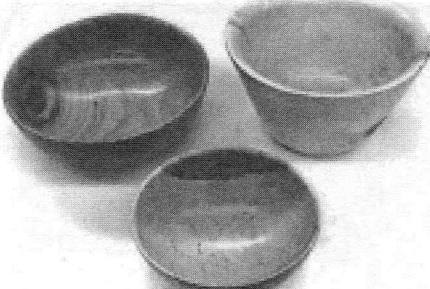


Bill Dooley's five pieces, Dutch Elm, Cherry, Walnut, Oak and Cherry

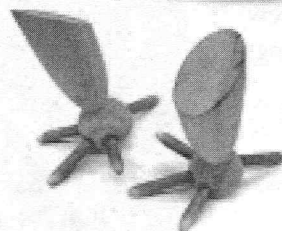


Ian's maple & oak burl boxes and Bloodwood and Maple Segmented bowl

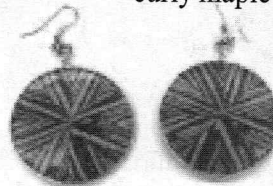
Bob Allen's curly maple box



Paul's three bowls finished with Beall Buffing System

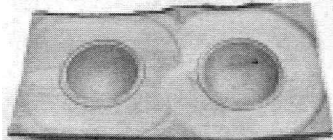


Don's Brolly Bird feet

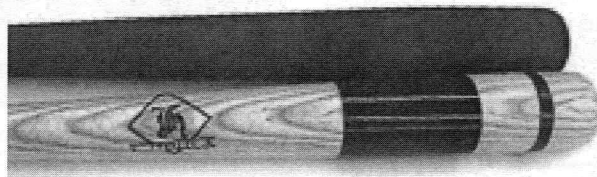


Wally's LDL Earrings

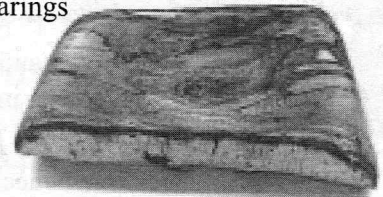
Hank's Olive wood box for Fund Raiser



Andy's experimental dual turning - how to cut off edges?



Jeff's bats for Hingham Historical Society Baseball fundraiser - they raised \$1700



Jim's carved spalted Birch piece