
AS THE WOOD TURNS

October 2011 Issue number 171 - Minutes of the September 27 meeting,

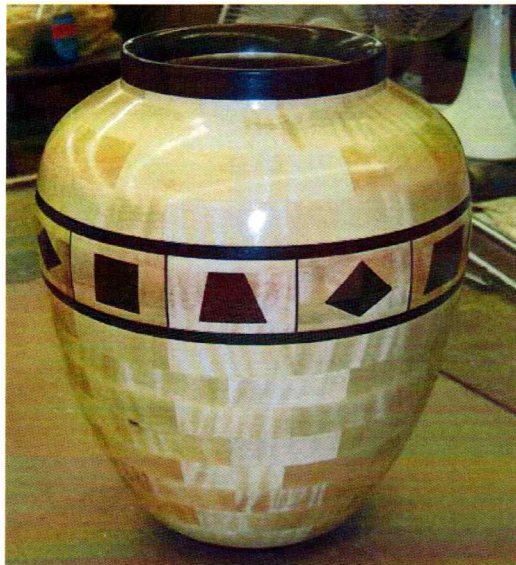
Some club members participated in the Corn Festival on September 18



Ian Manley, Bill Dooley, and Jim Denker



Bob Allen



Segmented vase by Wayne Miller, who spends about a month on this type of project.



The segmented vase is made from Curly Maple and Peruvian Walnut. It is 12" High and 10" in Diameter. There are 6 shapes: Parallelogram; Rectangle; Rhombus; Square; Trapezoid; Kite. They are each repeated in sequence for a total of 12 segments in the feature ring.

2011 MSSW Officers

President- Hank Cahill (781) 878-0234
hecahillandson@hotmail.com

Vice president Nigel Howe (508) 537-3394
nbhtumings@yahoo.com

Treasurer Wallace Kemp (781) 826-6254
bbarker417@comcast.net

Secretary Jeff Keller (781) 878-7310
jkeller@nerej.com

Librarian Charles Rosen (781) 848-6589
charlesrosen@comcast.net



Next Meeting

Tuesday, October 25, 2011 7:00P.M.
At Hank Cahill's *Dust Bowl*

Refreshments by : Paul O'Neil

Demonstration

Ian Manley – turning a box
Wally Kemp – Wall hangings

Web site: www.msswt.org/

Notices : The New England Woodcarvers has invited us to demonstrate at their annual affair 10/16 Sunday 9am-4pm at Middlesex Community College. Previous woodturners have declined this year. Hank participated in the past as a woodcarver.. MCC address; 591 Spring St Bedford MA. Contact > Roger Melanson 978 368 5923

Special upcoming demonstration and workshop Oct 15 & 16

The club is hosting Bob Rosand (www.rrosand.com) the weekend of October 15th & 16th. Bob makes some great Christmas Tree ornaments, lidded boxes, bowls, weed pots, etc....

Cost of the ticket for Saturday is \$27 including lunch. Lunch will be buffet style. There will be free coffee, water and soda available all day. Please arrive in time for a 9am start. Lunch will be at 12noon -12.30. The afternoon session will start at 12.30 and end at 3.30 or there abouts.

"Hands on" on Sunday will cost \$50 per person with a maximum of ten people/students. Sunday's timetable will be the same as Saturdays.

Contact Dave Rice at dergas5@aol.com or 508-668-3064 to reserve your ticket. Raffle tickets will be on sale during Saturday, the raffle will be called mid-afternoon.. Bob Rosand will have some of his special tools available for sale.

Minutes of the September 27 meeting ---Nigel gave us a rundown on upcoming events-

October 22nd. is Farm Day rescheduled in Marshfield

October 29th is the South Shore Senior day exhibit & Demo. We will have two tables and a lathe. Hank will coordinate.

Charlie gave the Librarian report: We have a new Malcolm Tibbets #6 DVD & Rexon Kipp on Christmas ornaments. Also the website is not updated with pictures yet.

Nigel reported that for the October 25th meeting, Ian will demonstrate turning a box and Wally will demonstrate wall hangings.

A **Demo committee** was formed to facilitate future booking, transportation and lodging of demonstrators. It consists of Wayne Miller, Bob Trucchi, Sidney Katz, David Rice and Bob Allen.

Christmas party- Hank will check with the cooks and report back to us at th next meeting.

Wood sources - Bob Allen spoke with River Rise Farm on Union Street in Marshfield. It has lumber from storms including apple, cherry, black locust, sassafras and birch. We will maybe have a chainsaw party soon there.

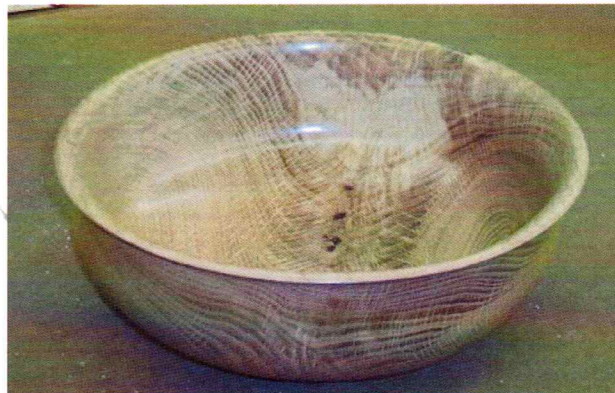
Glenn Shaffer reported an oak tree in his back yard available for cutting up. It's a quarter mile from the mall on Rte 1. (West Roxbury?)

Challenge for October Bob Sutter proposed that the challenge project for the October 25th meeting be for each member to turn something he or she had never turned before.

Show and Tell



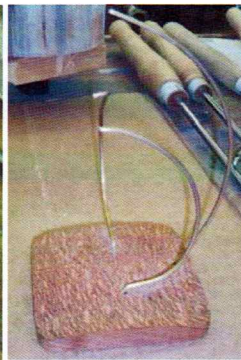
2 Mulberry bowls by Bob Scott



Small Sweet Gum box and a White Oak bowl with feather by Jeff Keller

Wrist exerciser by Jim Denker.

Jim says : "Fill the empty soda bottle with water, and use the turned wooden handle to wind the filled bottle of water up off the floor. Doing many repetitions will increase your wrist strength".



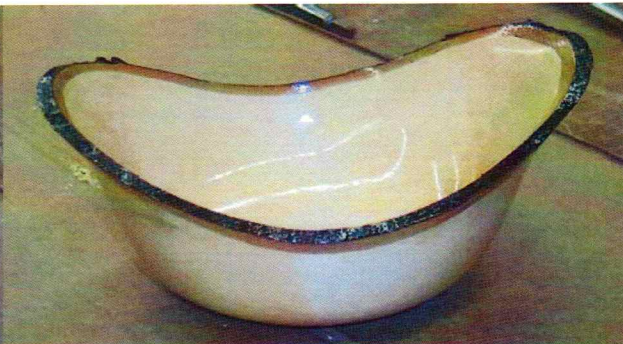
Andy Osborne brought in an Ambrosia maple bowl finished with Mahoney's oil and wax and all that is left of a sculpture and stand – the CA glue weakened and the sculpture fell off its stand.

Assorted pens by Lenny Mandeville. Left pen has a Celtic Knot. Numbers 4 and 6 are made with a 30-0-6 shell casing and also horn from deer.



Ken Lindgren brought in a White Pine driftwood bowl and some blanks for the wood swap. He said the wood is tough to turn with out tearout and had to start sanding with 36 grit

Nigel Howe made this hollowform out of two Cherry burls. He made his own hollowing tools shown below.



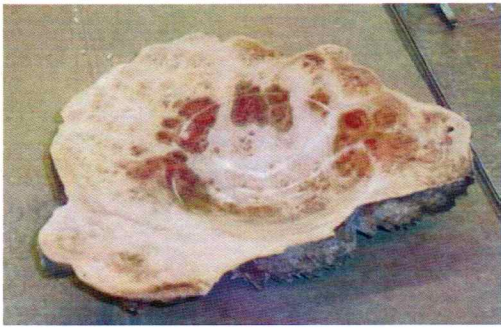
Red maple burl box finished with Waterlox and a Yellow Birch natural edge bowl by Jim Leatherwood

Nigel's Hollowing Tools based on "Ellsworth on Woodturning"

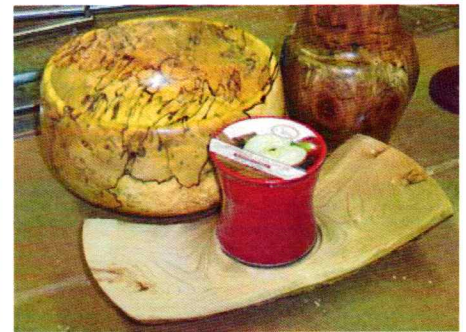


Paul O'Neill brought in a Box Elder bowl finished with Mahoney's oil and a Black Walnut natural edge bowl.

Cherry burl vase & burl weed pot w Rosewood base by Ben Natale



Shallow Burl bowl by Steve Wiseman



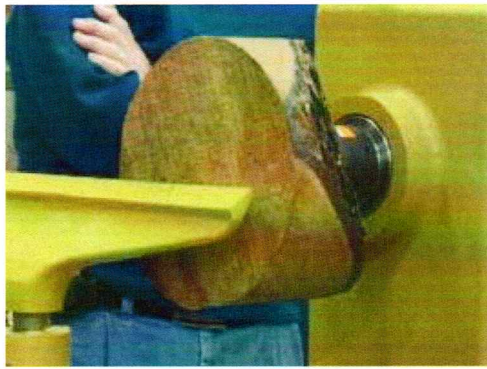
Spalted Chestnut bowl and a Catalpa candle in board by Ben Natale

Demonstration

The demonstration was making a natural edge bowl by Steve Wiseman.



Steve Wiseman explaining the next steps



Bowl blank mounted for turning



Shaping the bottom



Preparing the tenon before remounting



Ready for hollowing



Finished bowl

Remember - turn something you have not tried to turn before. Bring it (started, finished, or otherwise) to our next meeting for review, suggestions on how to make it, solve any problems you encountered, etc....