

---

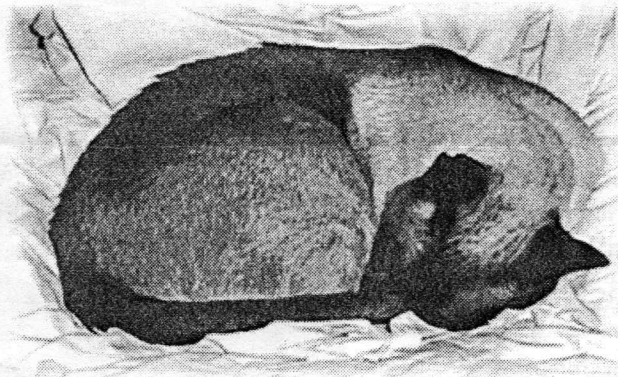
# AS THE WOOD TURNS

---

September 1998

---

## Don't Get Caught Napping!



### Start Turning Now for Upcoming Events

Daniel Webster Farm Day, Saturday, October 3rd, MSSW Exhibit/Sales/Demo  
Audubon/MSSW Exhibit, October 10th to November 28th

All Members Should Participate - Sharpen Your Tools and Imagination!  
Time is running out - that's why this newsletter is early - to alert all members.

#### DANIEL WEBSTER FARM DAY

This well established community event includes music, hayrides, farm animals, antique cars, children's games and activities, cider pressing, a white elephant sale, exhibits and lots of homemade food. The craft area has become a big draw, almost an event on it's own. With MSSW's participation the art and fun of woodturning can be introduced and shared with others.

#### How to get there:

##### Bring your turnings and the family

From Route 3, take Exit 12. Go east on Route 139 toward Marshfield. Follow Route 139 for 3.2 miles to Marshfield Center. Turn right onto Webster Street. (Papa Gino's Pizza on the corner). Follow Webster Street 1.4 miles to Winslow Cemetery Road on the left. Look for the cow. Sanctuary parking is at the end of the road - .6 miles. Set up is between 8:30 and 9:30 a.m. Vehicles must be in designated parking area by 9:30 a.m. Rain date Sunday, October 4.

#### 1998 MSSW Officers

President - Hank Cahill (781) 878-0234  
Vice President - Gary Levine (781) 843-3695  
Treasurer - Wally Kemp (781) 871-1390  
Secretary - Charles Rosen (781) 848-6589  
Librarian - John Murphy (781) 834-1179  
Newsletter - Mal Partridge (781) 843-3883



#### Next Meeting

Tuesday, September 22, 1998  
7:00 P.M.

At Jack Nash's shop  
Refreshments by: Mal Partridge  
Demonstration: Jack Nash

## Meeting Minutes

The August Meeting was called to order at 7:10 at **Janet Collins' shop**.

### President's Report

**Hank** introduce a new member, **Richard Friberg** and a guest, **Evelyn Kelley** of HK Hardwoods. Sixteen members were present.

Treasurer **Wally Kemp** reported \$985 in treasury.

The next meeting (September) will be at **Jack Nash's** shop. The October meeting will be at **John Murphy's** shop.

### Old & New Business

**Hank** suggested we arrange for a ceramist/designer as a guest speaker. The Cape Cod Woodturners will be contacted as they had a ceramist as guest speaker. He also discussed obtaining a "name" demonstrator, possibly **Al Stirt**, with a small charge per member and guests to cover some of the cost. We could also invite members of the Cape Cod Woodturners to participate.

**Emilio** discussed the upcoming Mini Woodturning Symposium to be held by CNEW and The Worcester Craft Center, Saturday, October 17th., 8:30 to 4:30. There will be 15 demonstrations - five at a time with 3 sessions during the day including such topics as pen turning, making a 3 leg stool, and turning red oak bowls. There will be an instant gallery with items on display and sale for one month at WCC. Vendors will be present and there will be raffles. Admission \$35.00. A box lunch will be available for \$5.00.

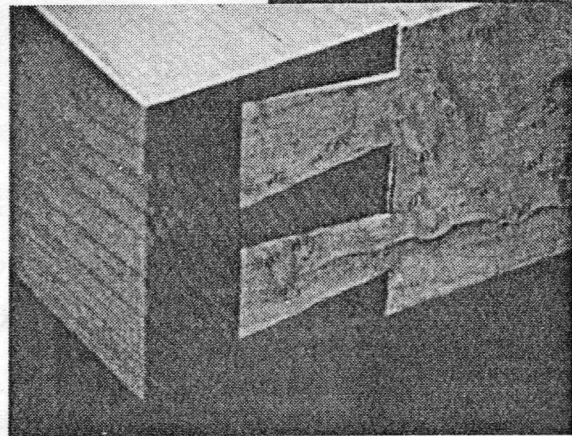
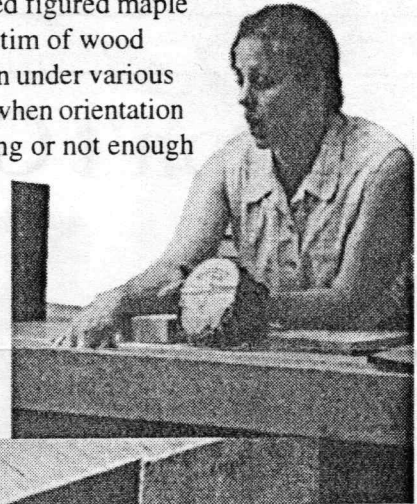
Farm Day in Marshfield is October 3rd. **Wally** is making arrangements for our exhibit. Demonstrators will be **John Murphy, Wally Kemp, Hank Cahill** and other volunteers who come forward. **Wally** will bring our Delta lathe and his pole lathe. This years MSSW/ Audubon exhibit was also discussed.

**Editors Note:** See additional information within this newsletter.

A brief discussion about the skew chisel's shape showed that there are many tools available to perform the tasks normally assigned to the conventional skew.

## Demonstration

Janet Collins presented an informative demonstration about wood movement, with some real life examples. Her beautifully crafted figured maple workbench was a victim of wood expansion/contraction under various climactic conditions when orientation of the grain was wrong or not enough space was allowed for expansion. Note how back of bench which is dovetailed into ends has been forced out. Mother Nature at work!

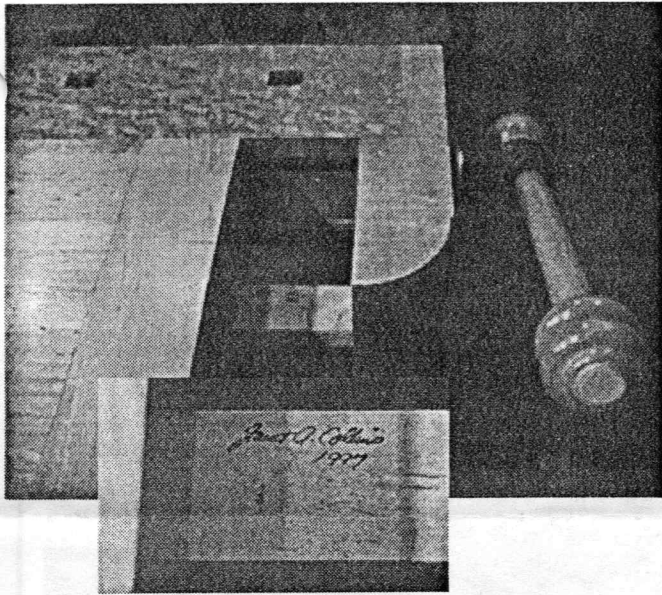


Janet referenced *Understanding Wood* by Bruce Hoadley during her discussion of wood movement and *The Workbench Book* by Scott Landis when she talked about the fabrication of her workbench.



Featherboard fixture for cutting raised panels after kerfs are cut, is demonstrated by Janet. The saw blade is tilted to left. The fixture is for a larger table saw than the one shown.





Janet's Bench Vise

Chauffeur's finger after turning related injury:



Lesson: Turn bowls not balls!

**Editor's Note:** For members who have not attended recent meetings, the chauffeur is Bob Iuliano a CNEW member who brings Emilio and Ernie to our meetings. He also brings Subtle Humor to the meetings.

---

## Welcome New Member

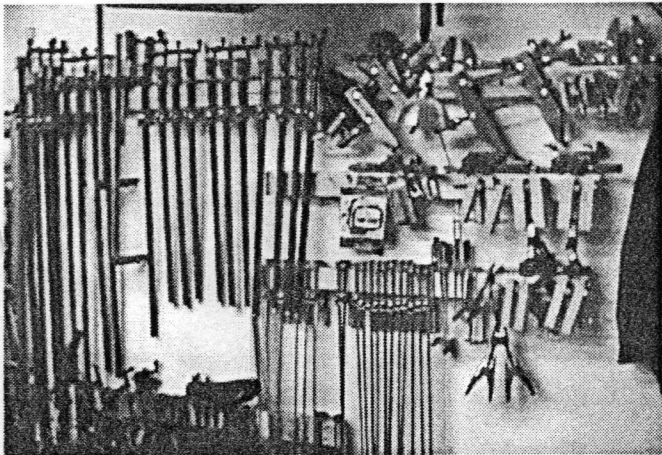
Richard Friberg

105 Pleasant Avenue  
East Bridgewater, MA 02333  
508-378-2436

---

Wally says "Make Things"  
Lots of Turned Things

---

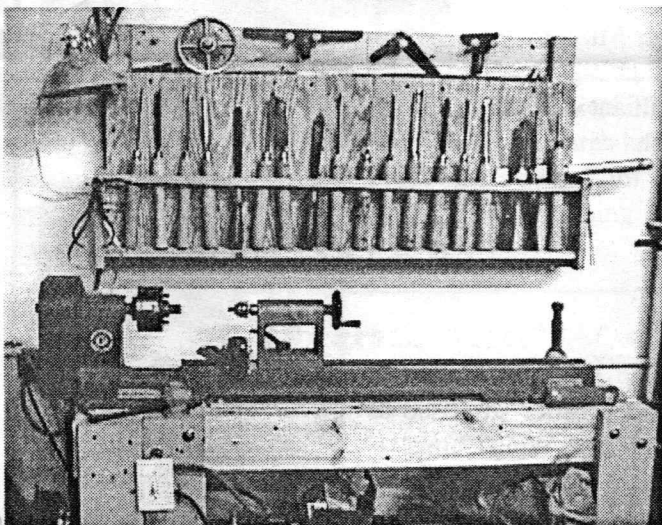


Clamps R Us



## Directions to Jack Nash's Shop

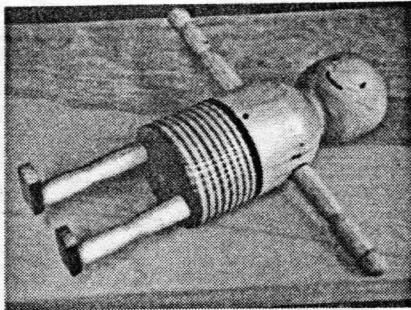
Jack lives just off 3A in Cohasset. Directions from Rte. 3. From the North take Exit 14 (Rte 228) to 3A and turn right. From the South take Exit 13. Go left at the ramp onto Rte 53 and then right on Rte 123 to 3A and turn left. When you get to Cohasset turn West at the traffic lights onto Beechwood St. This intersection is marked by an EXXON station on the East side and the Cushing Plaza construction site on the West Side. King St. is the first right. Jack's shop is the second (steep) driveway on King St. Please park down by the road on either Beechwood or King.



Janet's Lathe

# Show & Tell

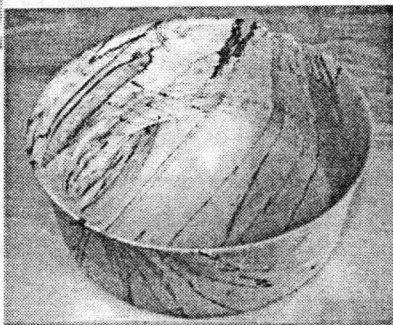
**Ernie's** floater for CNEW picnic pond turned from fence post. Multi color swim trunks by Crayola?



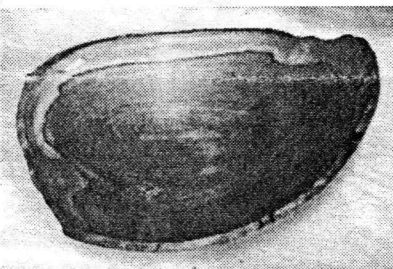
**Steve Sarro** is on a roll. He presented three fine bowls - this one in cherry, one in ash,



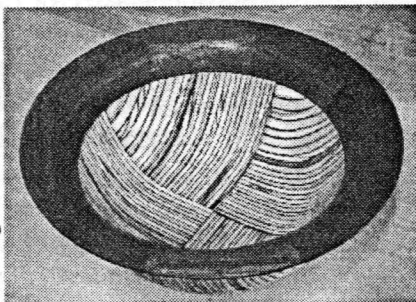
and this one from spalted beech.



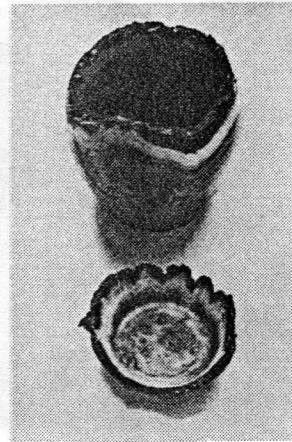
**Wally Kemp** showed this nicely shaped bowl turned from apple wood.



**Wally Kemp** combined Microlam and walnut for a unique segmented bowl. Microlam cannot be turned too thin due to possible delamination.



**Wally Kemp** created these two nice small turnings from Russian Olive obtained at the last meetings wood swap.



**Janet Collins** showed a burl vase presented to her daughter upon High School Graduation. Finish - multi coats of Qualasole padding lacquer.



**John Murphy's** Walnut Bowl with a brilliant varnish finish.



**Jeffrey Keller** surprised us with a large Wind Chime with turned elements. He got the idea from an article in the *American Woodturner* magazine Summer '98 issue.

