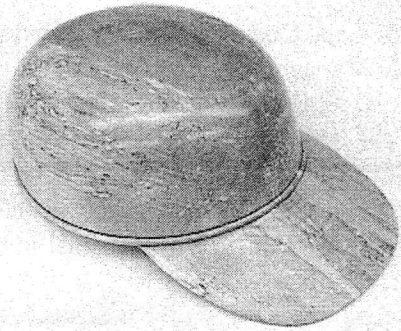


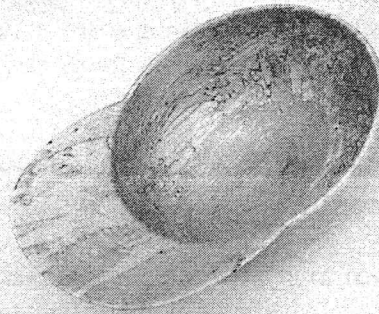
AS THE WOOD TURNS

September 1999

Wooden You Know - Hat's Off To Emilio and Bob

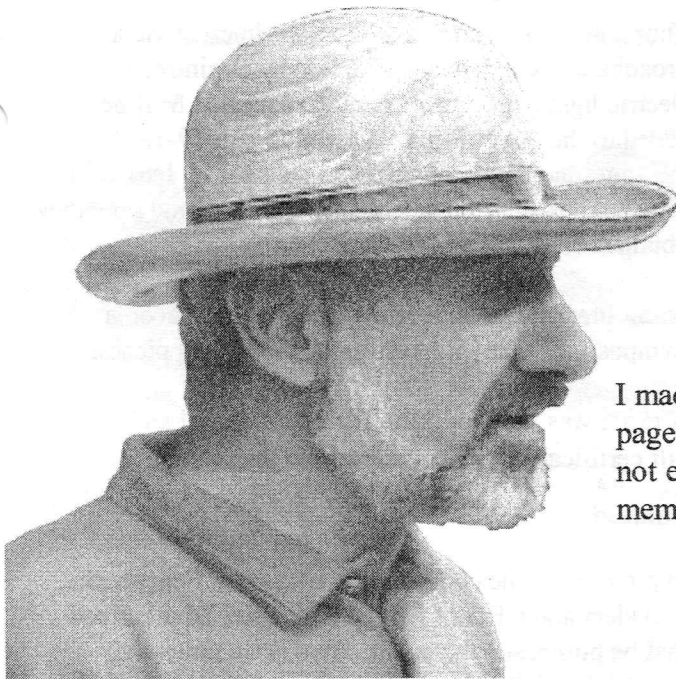


Emilio Iannuccillo's Yellow Birch Cap



Bottom View - Note Thin Wall

Emilio and Bob attended a green wood turning workshop at Johannes Michelson's shop in Manchester Center, VT and turned three hats apiece using a special grind short beveled gouge and plenty of sanding and help from Johannes. The workshop lasted three days and cost \$750. The finish is lacquer. Very impressive hard hats!



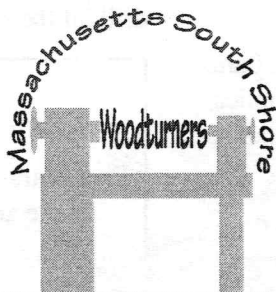
I made the front page and I'm not even a member!



Bob Iuliano's Wide Brim Hat

1999 MSSW Officers

President - Hank Cahill (781) 878-0234
Vice President - Felix Troiano (781) 749-1713
Treasurer - Wally Kemp (781) 871-1390
Secretary - Charles Rosen (781) 848-6589
Librarian - John Murphy (781) 834-1179
Newsletter - Mal Partridge (781) 843-3883



Next Meeting

Tuesday, September 28, 1999
7:00 P.M.

At Hank Cahill's *Dust Bowl*
Refreshments by: Cristina Dutra
Member Challenge Project: Whistle
Demonstration: Outboard Tool Rests

Meeting Minutes

The August meeting was called to order at 7:11 at Hank Cahill's Dust Bowl

President's Report

Hank reported that he has heard from Al Stirt, who just got back from a Vancouver canoe trip, and that the September 25th demonstration by Al is scheduled to start at 10am. Admission is \$20. Bring a Brown Bag lunch. **Hank** requested **Mal** make signs for display at various woodworking stores in area.

A list of classes of interest to woodturners at Woodcraft, Woburn was presented.

A letter was received from **George Paes**, a former CNEW member, now living in California. **Hank** requested his name be added to our newsletter mail list for a California newsletter swap.

A juried art show by the Plymouth Guild to be held at the library in September was mentioned for those interested. Christmas ornaments or Menorah's requested by Signature Galleries are due November 1st. **Hank** will be exhibiting at South Shore Art Center Sept. 12th thru October. **Emilio** and **Bob** both won 3 Blue ribbons at a RI county fair.

Secretary **Charlie Rosen** had no report, but requested newsletter be sent via E-Mail to him for Web site. **Mal** complied August 25th.

Treasurer **Wally Kemp** reported \$936.95 in treasury after paying current expenses. He will place another order for Anchor Seal if members need more.

Librarian **John Murphy** reported we are up to date on all books. **Rich Friberg** has one book due next month.

Old and New Business

Audubon Farm Day is October 2nd with setup at 10am. **Mal** will bring MSSW banner and membership applications. **Wally** and **Hank** will bring our lathe and other equipment for our demonstration. A table will be available to display and sell members turnings.

October member challenge is a walking stick.

Members are again reminded to make a bird house or bat house for presentation to Audubon, Marshfield at the start of our exhibit. Setup dates are October 21st and 22nd. The exhibit ends December 4th. **Mal** will supply tent cards for display information.

A **work party** to move the General Lathe and set up video equipment, chairs, etc. will meet at **Hank's** shop on **Thursday September 23rd at 10am**, in preparation for Al Stirt's Demonstration on Saturday the 25th.

Al Barbour of Cape Cod Woodturners was featured in Cape Cod Life Magazine.

The member challenge for September meeting is a whistle. **Mal** brought in the October '99 issue of American Woodworker magazine with a timely article on pages 20-28, "Turn a Fancy Whistle". Just in time!

Mal suggested putting a nut on the headstock spindle threads to protect them when using a drive center. It won't do much to protect an errant tool!

Your newsletter editor is now on the internet via a broadband local network supplied by Braintree's electric light department. **Emilio** requested **Mal** be added to the AAW E-mail list and to date (9-18-99) 92 messages have been received halted only by hurricane Floyd. An inquiry on where chapters meet and how they obtained sites was responsible.

Hank presented a slide show of the AAW Tacoma Symposium. Many interesting and beautiful pieces.

A raffle was held for **John Murphy's** finial and a \$25 gift certificate. Winners know who they are!

Note of Interest

In a recent phone conversation with John Economaki, President and CEO of Bridge City Tool, **Mal** learned that he purchased the collaborative three times size wooden hand drill, patterned after a Bridge City CT-6 drill, at the AAW Tacoma Symposium for \$1500.

Delta Lathe For Sale

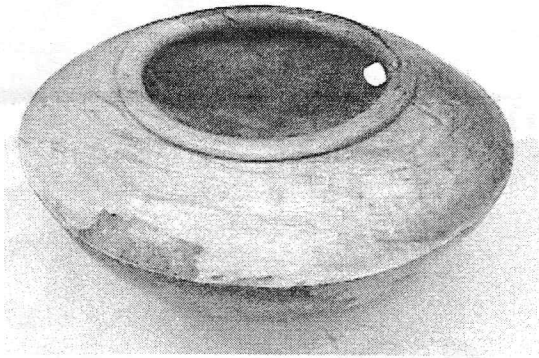
Five years old, but only used for 20 hours. Belt drive.
Make an offer - call Peter Kirkdrude in Scituate
781-545-6967

Important Notice - All Members

A table will be set up for an **Instant Gallery** at the Al Stirt demonstration on **Saturday, Sept. 25th**. All members should bring in 2 to 3 pieces for display. Let's show Al and the other turners attending what our group can do.

MSSW Instant Gallery

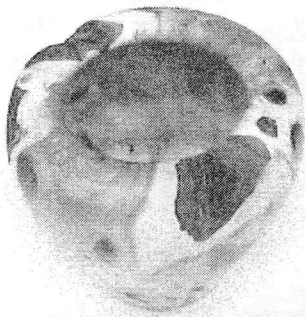
August Show & Tell



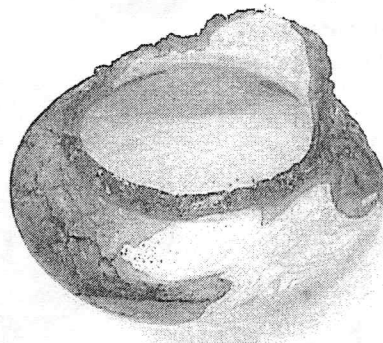
Wally Kemp's "pieces flaked off" cherry burl



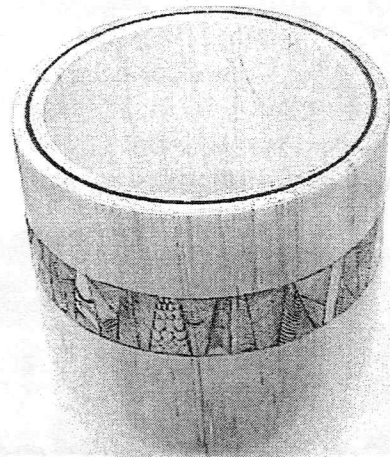
Wally Kemp's nice piece



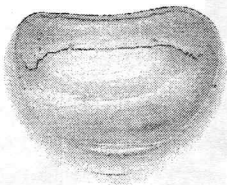
John Shooshan's vase from yew root
(at base) - interesting coloring



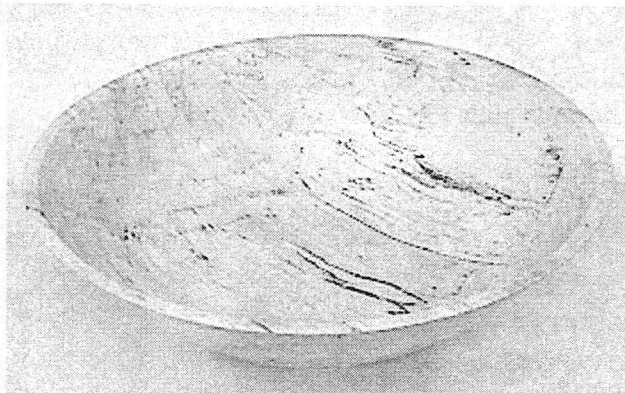
Richard Friberg continues to turn
beautiful items



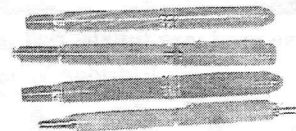
Hank Cahill's spalted tupolo
vessel with burned wood pattern



John Murphy's mini bowl,
a little jewel

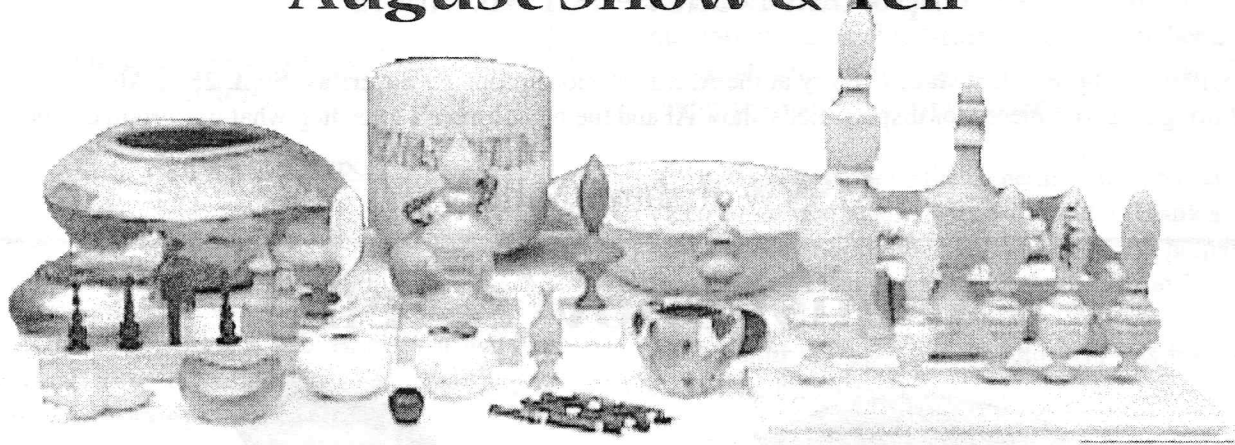


Hank's spalted maple bowl with lacquer & wax finish
(Rough cut was in a bag since '94)

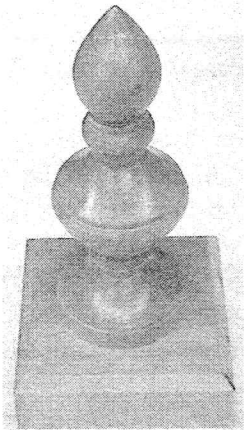


Jeffrey Keller's carolina cherry
burl and cocobola pens

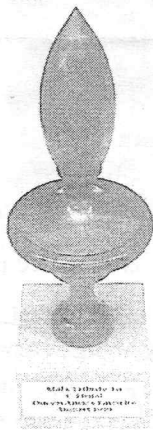
August Show & Tell



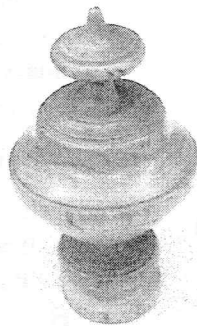
Finials on Parade



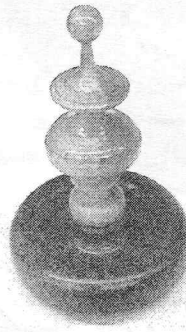
John
Murphy



Mal
Partridge



Jeffrey
Keller



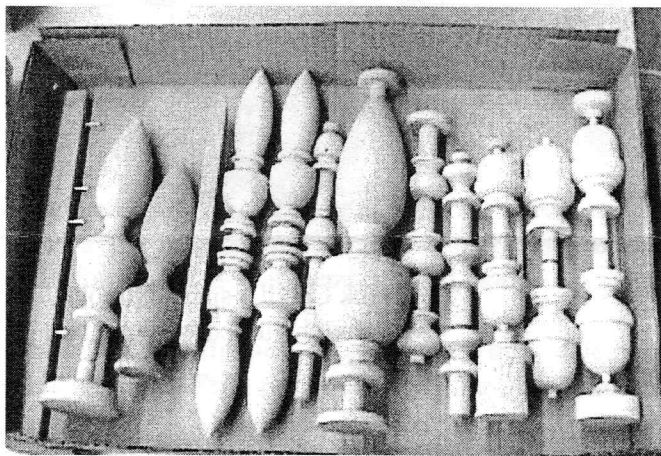
Wally
Kemp



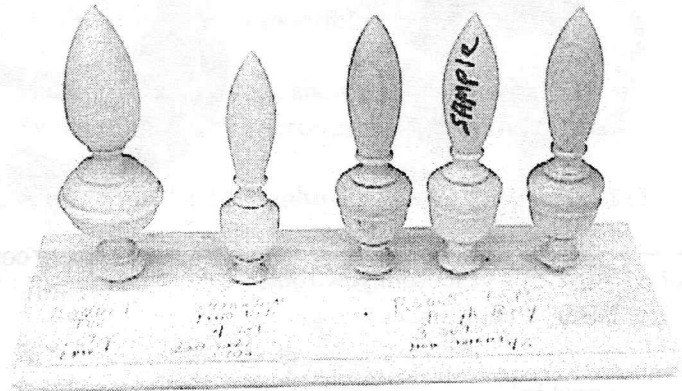
Felix
Troiano



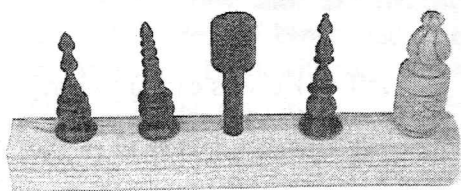
Steve
Sarro



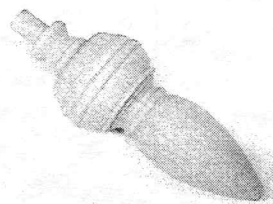
Jesse produces finials, bed posts and draw pulls for Eldridge Wheeler Co.



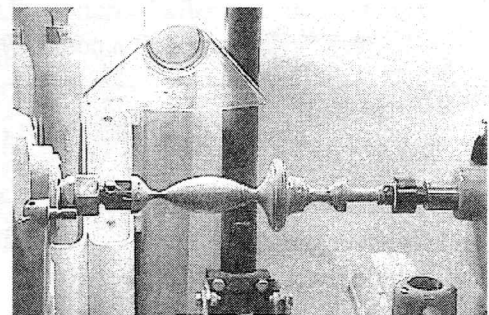
Jesse Meyer's maple finial production sample board



Hank Cahill's four miniature ebony finials and bottle stopper (used cement nail skew and hacksaw blade parting tool)



Richard Friberg's finial



Mal's cherry finial ready for parting off
Note dust vacuum intake and tool holders