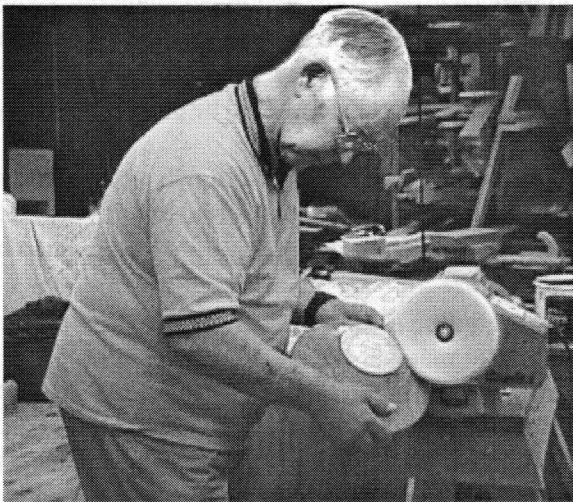

AS THE WOOD TURNS

September 2000

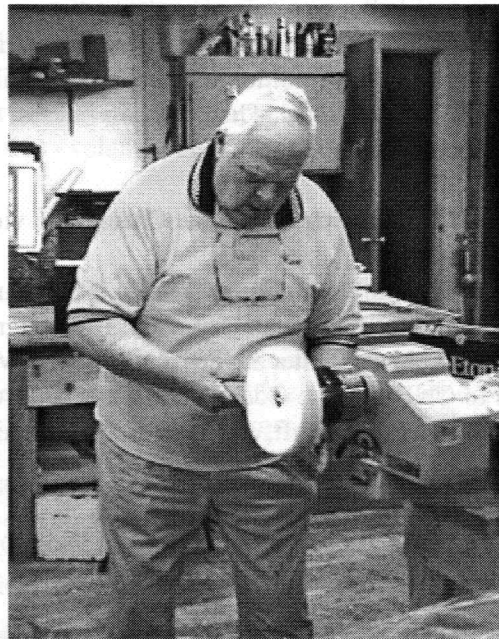
Turning in the Buff

Now that we've got your attention -
Wally and Hank Demonstrate Buffing Techniques



Wally "Cahill" Kemp

As Wally didn't wear his MSSW shirt to the meeting and as I neglected to take photos of his buffing demo, my only choice was to attach a photo of Wally's head to a familiar body. Notice Wally's deep concentration as he buff's Hank's bowl with great dexterity and a surgeon's skill.



Hank Cahill

Hank is polishing a bowl for the bright shine that seems to sell, although he doesn't believe that it does the most for the character of the wood.

2000 MSSW Officers

President - Hank Cahill (781) 878-0234
Vice President - Felix Troiano (781) 749-1713
Treasurer - Wally Kemp (781) 871-1390
Secretary - Mal Partridge (781) 843-3883
Librarian - John Murphy (781) 834-1179
Newsletter - Mal Partridge (781) 843-3883



Next Meeting

Tuesday, September 26th, 2000
7:00 P.M.

At Hank Cahill's *Dust Bowl*
Refreshments by: Tom Holland

Member Challenge: A turning or finishing tip
Demonstration: TBD

Meeting Minutes

The August meeting was called to order at 7:05 at Hank Cahill's Dust Bowl

President's Report

Hank showed a copy of *Woodshop News* with an article about our AAW Chapter Challenge Gnome Rotary Engine. Color photo on page 1 and article on page 12. The 50HP Gnome engine was not used in the Sopwith Camel. The reporter assumed that because our newsletter article mentioned **Mal** viewing a model of the aircraft with a rotary engine, that it was the Gnome, when in fact it was a Clerget 130HP rotary engine, Circa 1915. The Gnome was selected because it was the first successful rotary produced in production and made aviation history.

An invitation from GROHE Gallery to supply christmas ornaments, a Holiday tradition which Wally contributed to last year, was received. There was no interest this year by members.

There has been no progress on the Channel 56 video.

The demonstration by **Jacques Vesery** is scheduled for Saturday the 13th of January 2001. It was agreed that we should have better advertising this year with notices to CNEW, Cape Cod Woodturners, Beaver Woodworking, Woodcraft, etc. The price for admission will be \$25. Our estimated cost \$500-600.

Treasurer **Wally Kemp** reported \$925 in treasury less newsletter expenses just received from Mal.

Librarian **John Murphy** reported everthing up to date.

General Business

Our Audubon Farm day demonstration is scheduled for Saturday October 14th. Rain date the 15th. A discussion as to whether we use their platform or supply our own as we have to move during noon entertainment that takes place on the stage. **Wally** will check with Audubon. We should be where the spectator seating is.

The Gnome rotary engine is on display at the Abington Town Hall with selected turnings from members. **Mal** has a key to the case and takes the engine from time to time to demonstrate at various venues.

Our annual South Shore Audubon show will run from October 21st thru December 9th, with setup on October 19th or 20th. It was agreed that an acrylic case should be purchased to safeguard the Gnome rotary engine when on display, estimated cost \$125. **Mal** will fabricate base. The engine may be removed from time to time as there are scheduled demonstrations in October and November.

Janet Collins brought in a box of copies of *Woodshop News* with our Gnome project article for distribution to members. Thanks Janet!

Emilio briefed us on the AAW Symposium 2002 to be held in Providence, RI. There will be the need for 200 volunteers to be assigned to various committees to aid in setting up and running the Symposium. John Murphy mentioned that the Duxbury Art Association would like to host a national show to coincide with the Symposium. Also a package of events and places of interest in the area, for example Quincy, Plymouth, etc. that are of Historical importance, should be prepared.

Welcome back to member **Charlie Rosen!**

Gnome Rotary Engine News

Mal distributed color photographs of the Gnome rotary engine to members of the fabrication team in appreciation for their efforts to the project.

He will be demonstrating the Gnome at the November meeting of the Cape Cod Woodturners at President Ray Cartiers request. A kit for fabricating the rotary engine operation demonstration model is in the works.

Roy Noyes requested pictures and information on the Gnome for an article in *The Old Saw* newsletter of the Guild of NH Woodworkers.

A visit to the New England Air Museum at Bradley Field, CT by **Mal** and his wife **Gloria**, to show the Gnome engine resulted in their interest in doing a video of the engine and it's fabrication as well as a demonstration at an aviation educational program next April at the museum.

On the same day they traveled to Poughkeepsie, NY to show the engine to Leo Opdyke, editor and publisher of World War 1 Aero Magazine. Additional Gnome data was obtained including a illustrated parts list for the

50HP Gnome which has confirmed the accuracy of our replica. Leo plans to include an article in the February 2001 issue of the magazine which has world wide distribution.

Returning, they stopped to visit with Lauren McCready, Rear Admiral, USMS (Ret) in West Redding, CT. He was at King's Point Maritime Academy for 25 years as head of the Marine Engineering Department. He has supplied valuable information on the Gnome engine that made our project possible. He was excited to see our wooden replica. It was a most interesting visit. He has a machine lathe and has many live steam engines that he fabricated on display.

Our AAW Chapter Collaborative Challenge Project is being seen and enjoyed by hundreds and in the future by thousands of people as opposed to it's being sequestered in someone's home where only a few can enjoy it's beauty! It is attracting attention to the art of woodturning and a renewed interest in early aviation history.

As a small group of woodturners (25 members) we should be very proud of our accomplishment. It shows we can compete with the very large organizations with their power structure and financial support. We do not have a cadre of engineers as inferred by Roger Austin, VP of AAW, in an E-Mail message. And the binder of detailed printouts he referred to was well received at the symposium and enabled other woodturners to see what a small group working together can accomplish. As an officer of the AAW he should not show a bias toward any chapter, nor voice an opinion on what talent a chapter may have or not have. We are woodturners, but also we may be or have been doctors, lawyers, laborers, clerks, carpenters, politicians, farmers, and on and on. Our chapters have cadres of talented people, their abilities should not be underestimated.

And then there are the rules which should be followed by any chapter entering the challenge. What arrogance when a large chapter flaunts the rules two years in a row, and when confronted claim that they are immune, having spoken with someone on the AAW board of directors!

Welcome New Member
Charlie Stasinos from Plymouth, MA

The Team of Wally & Hank presents- Polishing Wood or Bluffing Your Way to a Shine

Wally started the demonstration on our lathe with the headstock moved to the end of the lathe bed and an arbor with a buffing wheel installed in the chuck.

Polishing wood without buffing wheels Wally uses a waterbased urethane finish then polishes with steel wool and carnauba wax. He ran the buffing wheels at approx. 1800 rpm. Loaded the wheel with tripoli and buffed the object - he did not force against wheel, but allow the abrasive to do it's work. Ridges can be a problem. Wally removed the stitches from his wheels. (Beall buffs are not stitched) Wally finished using wax to bring up the luster. He also found that Hut wax is abrasive, best used with oil finish.

Hank continued the demonstration using the Beall system as explained below from the Beall web site:

<http://www.bealltool.com/buff.htm>

The Beall Wood Buff

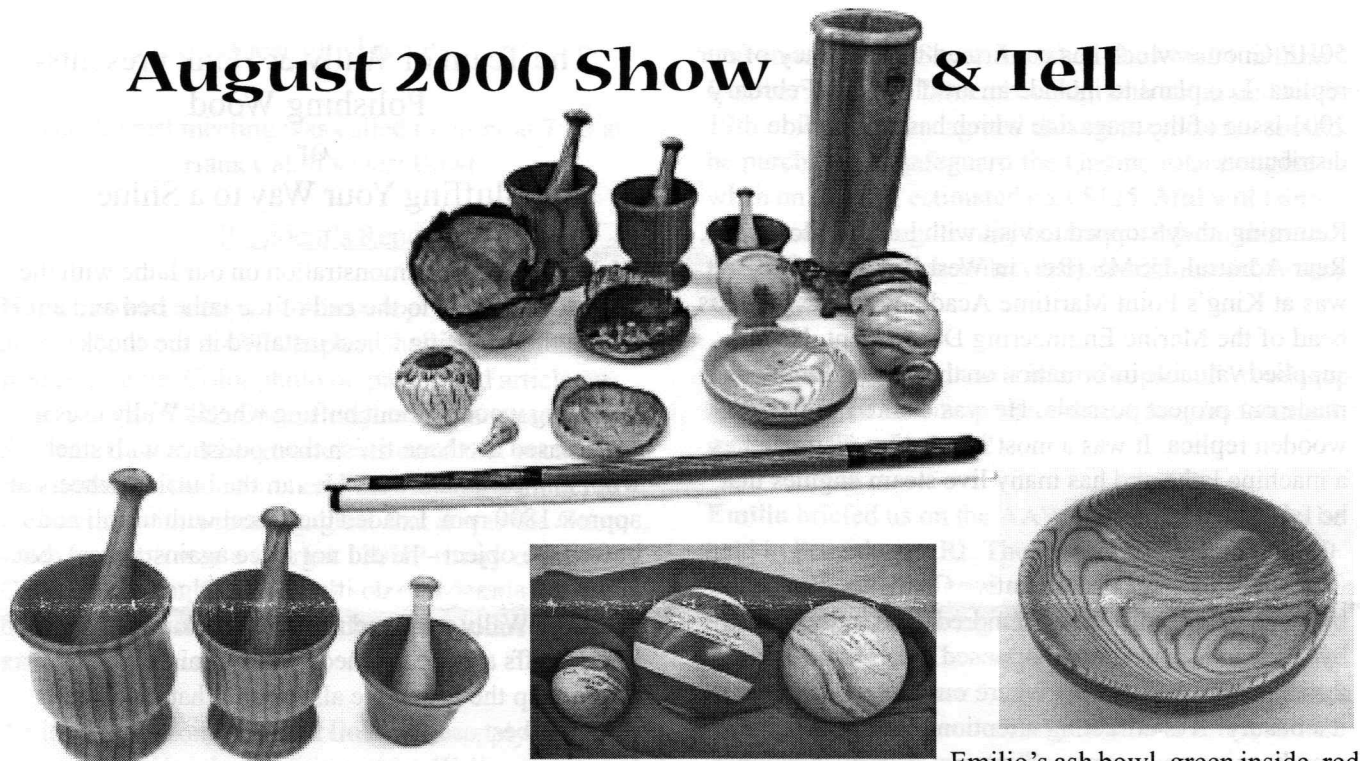
The Wood Buff is a complete set of finishing buffs and compounds designed specifically to give wood a fast but spectacular finish. Pipe makers have been polishing their briars in this way for many years, but the process is virtually unknown to other wood workers. The Wood Buff produced such gratifying results in our shop that we decided to market it in a kit form. The process involved in its use is as follows:

How it works

1. Finish the part using any good penetrating oil finish such as Min-Wax Antique Oil, tung oil or Watco, then:
2. Buff with the Tripoli bar using the All Linen Buff.
3. Buff with the White Diamond Bar using the Combination Linen and Flannel Buff.
4. Polish with Carnauba Wax and the All Flannel Buff. The resultant finish will be very close to multi-coat lacquer finish in appearance.

The Kit also contains a quick change Adapter which adjusts to 1/2" or 5/8". It will fit on the shaft of a 1/2 hp or more, 1725 motor and allow the rapid changing of the various buffs used in the process.

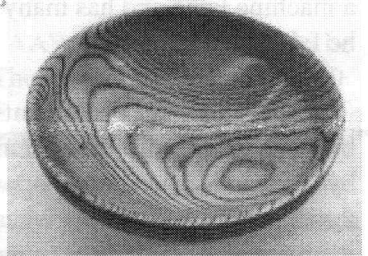
August 2000 Show & Tell



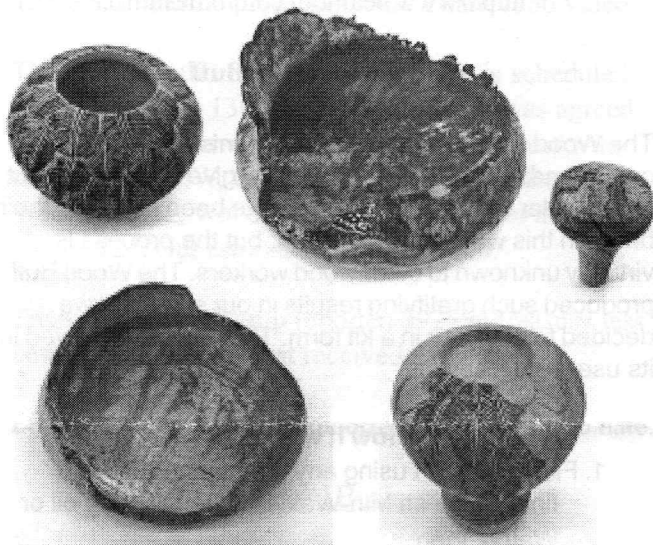
Jesse Meyer turned these mortar & pestals
Two old chestnut from a tobacco farm. One
cherry and maple. End grain for hard bottom.



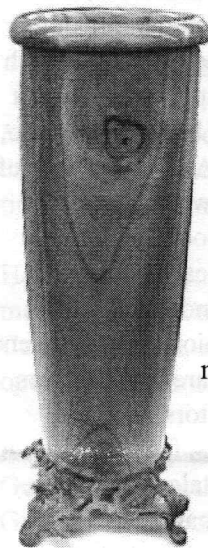
Emilio's Boc-cie balls - used
three axis jam chuck to turn



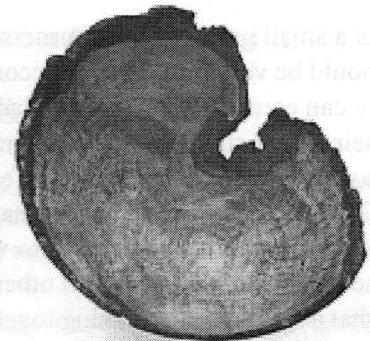
Emilio's ash bowl, green inside, red
outside - Aniline dye solvent based



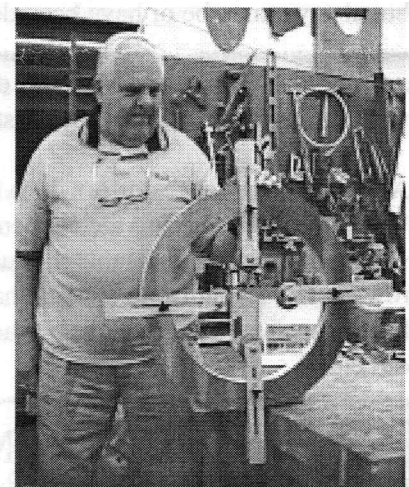
Richard Friberg again had many fine pieces on display
and continues to develop his woodburning decorative
techniques - note practice piece



Hank's paloma tall
vase with an old
cast metal base



Red maple burl with fake spalting
mark from piece flying off - by Emilio



Hank's really big steady rest with
roller blade wheels



Jeff Keller's pool/billiards cue - maple, cherry burl and ebony with
spar varnish finish - spent some time at Wally's shop lining up stock
for boring hole accurately for proper alignment of both sections