

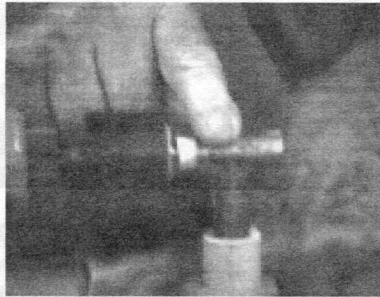
AS THE WOOD TURNS

September 2001

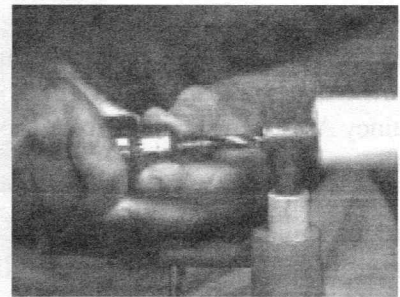
A Boring Meeting



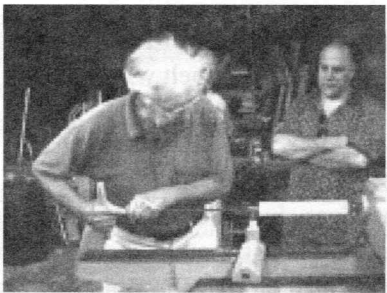
Wally Kemp aligns boring guide on tool post with tailstock



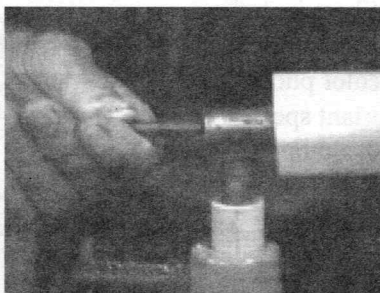
Closeup of guide made from copper T fitting



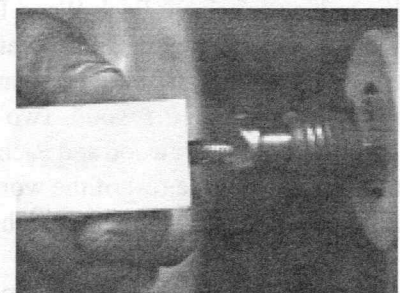
Spotting hole with drill on end of stock aligned in guide



Wally pushes lamp auger into stock thru guide as Angelo watches



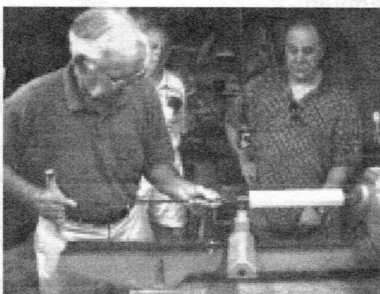
Closeup of lamp auger being guided into stock thru centering guide



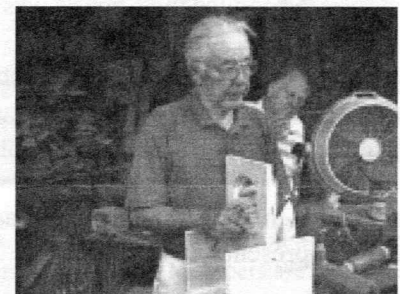
Stock reversed after boring half way thru and aligned with drive



Getting ready to bore hole thru stock to meet previous hole



Wally completes task. If tailstock has thru hole, guide not needed



Fixture to hold large turning for boring thru hole for lamp cord

2001 MSSW Officers

President - Hank Cahill (781) 878-0234
Vice President - Felix Troiano (781) 749-1713
Treasurer - Wally Kemp (781) 871-1390
Secretary - Mal Partridge (781) 843-3883
Librarian - John Murphy (781) 834-1179
Newsletter - Mal Partridge (781) 843-3883



Next Meeting

Tuesday, **September 25th**, 2001, 7:00 P.M.
At Hank Cahill's *Dust Bowl*
Refreshments by: **Jesse Meyer**
Member Challenge: **Turned Flower**
Demonstration: **Laser Guided Turning**
by **Frank Movitz**

Meeting Minutes

The meeting was called to order at 7:10 pm at Hank Cahill's Dust Bowl

President's Report & General Business

President **Hank Cahill** introduced a guest **Ian Peck**, a North Bennett Street School student.

Correspondence included a \$15 gift certificate from *The Cutting Edge*. The Plymouth Guild's 34th Annual Show will be held September 15th to 19th and the Quincy Art Festival will be from September 14th to 16th.

Mal, as agreed, purchased the book *A Guide To Useful Woods of the World* for the library and gave it to **John** for distribution. Published by Forest Products Society and IWCS it features 279 species of importance to woodworkers. Each Wood Data Sheet includes a line drawing of a key botanical feature, a photomicrograph of the end grain of the wood and a color photograph of a sample of the wood. Two important species not included are Wallywood and Richwood, although it's probably best that the rest of the world is kept in the dark about these unique species. (The wood, that is)

A copy of an article about a tiny numerically controlled lathe measuring 1"x 1 1/4" x 1 1/4" (32x25x30.5mm) designed to produce micro parts was distributed.

A unique low cost tool holder was shown by **Mal** which was purchased from Costco. Unfortunately they sold out in a few days.

An updated membership list was made available to members present.

Pictures taken at the Bob Rosand demo in RI were sent to Ken D'Ambrosio and **Mal** will be demonstrating how our Gnome Rotary Engine was fabricated at the September 20th meeting of the Ocean Woodturners. He also showed use drawings he is producing for fabrication of full size wooden rotary engines for two museums in USA and Canada.

Treasurer **Wally Kemp** reported \$767 in treasury.

Librarian **John Murphy** reported 3 books, 1 video out.

New members are encouraged to take advantage of our extensive library of books and videos. They are there to be used and **John** will be happy to advise new members which are appropriate for given tasks. Our old timers should also review what we have available.

John also showed a flyer by the South Shore Arts Center in Cohasset for a National Juried Exhibition featuring Planes, Trains and Automobiles November 9 thru January 5, 2002. October 5th deadline for submissions of slides to be juried. Perhaps we should submit the Gnome Rotary Engine.

Wally mentioned an advertisement in the Boston Globe showing turned bowl prices from \$39 to \$440 for a Ray Key bowl.

Audubon Farm Day is September 29th, and our exhibit at South Shore Audubon in Marshfield is November 3rd (Reception) thru December 21st, with setup on November 2nd. Audubon receives 25% of all sales.

Janet Collins paid \$111 for a leather belt for her lathe and told us of the source. The old belt will probably be cut up for leather strops!

Jesse Meyer visited Oneway's family run factory in Canada. The factory was shut down for vacation but he was given a very comprehensive and interesting tour and was able to resolve an electrical problem he was having with his Oneway lathe.

The raffle for **Roger's** member turning was won by **Frank Iafrate** who will supply a piece for the next meeting's raffle.

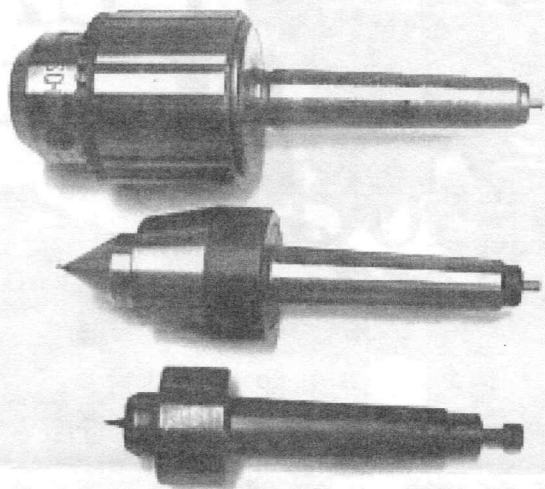
Hank reviewed some problems he had with his 1997 Husky electric chain saw.

A wood swap and safety kit raffle was held with everyone who contributed winning something!

Contribute to the Newsletter
Articles or Photographs
Turner's Tips
See Your Name In Print!

Having Trouble Ejecting?

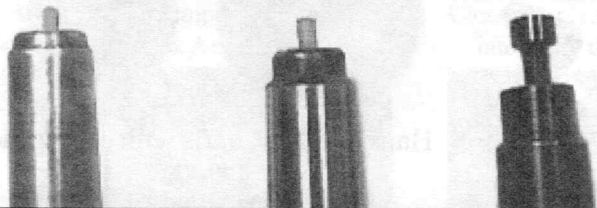
From the Tailstock



If a tailstock won't eject a Morse taper center or drill chuck try these solutions:

If your taper cannot be ejected use a flat bladed screwdriver as a wedge - be careful you don't damage a bearing if present. A wooden wedge could also be used. Then modify the end of taper to insure proper ejection as shown below.

Insert a short dowel in hole or tap and use a screw as a means of adjusting for different tailstocks. Some Morse tapers are already threaded.



Articles of Interest to Woodturners

American Woodturner Fall 2001

Turning Flowers Page 19

Turning Spheres Page 26

Winners of Chapter Collaborative 2001 in color Page 30

Trapped boring bars Page 36

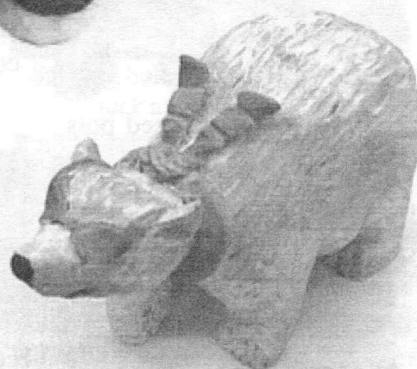
The Deltagram - Popular Woodworking Special Issue

Turned table lamp Page 31

Blackot lamp Page 40

Plus many articles and advertisements from *The Good Old Days* the Thirties thru the Sixties

Carvings by Bernie Feinerman



Library



The Library has a good selection of periodicals and books thanks to the donations by members. A self service system will be used for distribution. The following procedures have been set up to keep track of the collection.

The Librarian has been authorized to spend \$25.00 per month for additions to the library. Members are requested to submit their suggestions for new books, magazines and videos.

Check Out

1. Sign and date control card found in book pocket
2. Place card in index box
3. If checking out a video:

Give \$2.00 rental fee to **John Murphy** or place money in index box

Return

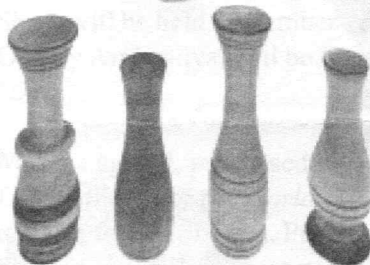
1. Find control card in index box and cross off name
2. Replace card in book pocket

Show & Tell

August 2001



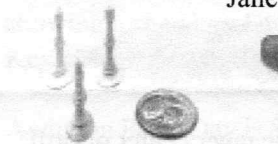
Janet's pear handle



Jesse Meyer's weed pots



Rich Friberg's vase with copper & gold leaf trim



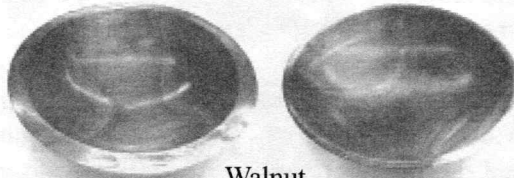
Lenny Langevin's bone miniature candlesticks



Lenny Manderville's chisel handle & Rich Friberg's Rosand skew



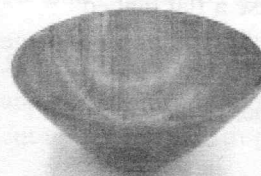
Bernie's handle



Walnut
John Murphy's four pieces



Maple burl - oil finish



Cherry



Jeff's pen mill



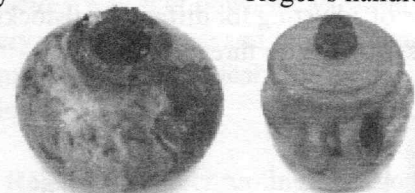
Roger's handle



Wally's huge 20" spalted maple bowl

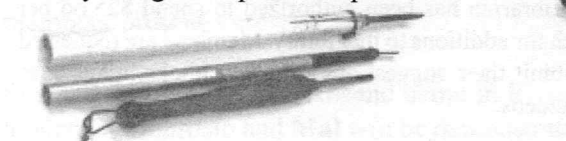


Mal's handle assortment



Hank's red oak burls with ebony knob

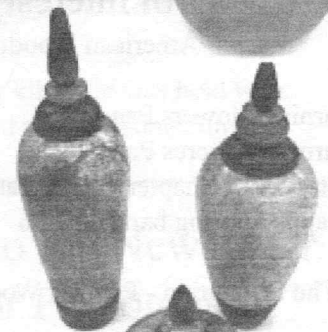
Roger's box wood raffle prize



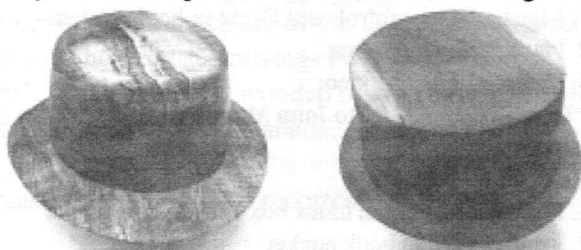
Wally's handles - pvc, aluminum, & oval turning



Angelo's diamondwood & kingwood handle with tool from allen wrench



Angelo's soapstone three brothers containers



Fiddleback maple Cherry (Made all by himself!)
Hat's off again to Bob Iuliano



Bob's oak bowl