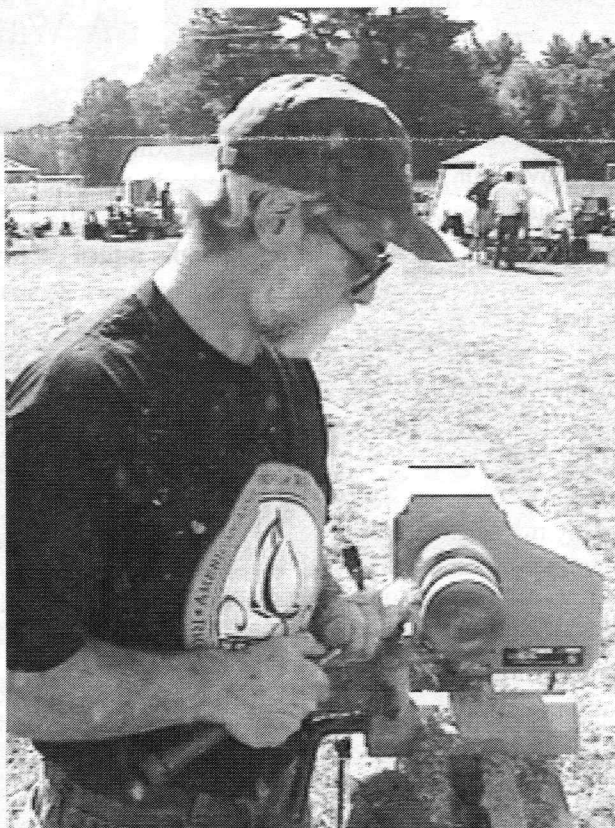

AS THE WOOD TURNS

September 2002

Oh, What a Beautiful Morning

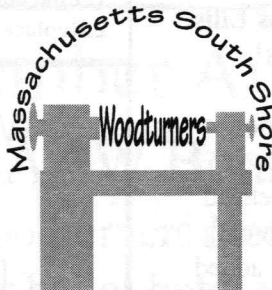


Andy Osborne turns under the morning sun at the Cracker Barrel Fair

What could be better - turning in the open, with a gentle breeze and wood chips flying

2002 MSSW Officers

President - Hank Cahill (781) 878-0234
Vice President - Felix Troiano (781) 749-1713
Treasurer - Wally Kemp (781) 871-1390
Secretary - Mal Partridge (781) 843-3883
Librarian - John Murphy (781) 834-1179
Newsletter - Mal Partridge (781) 843-3883



Next Meeting

Tuesday, September 24th, 2002
7:00 P.M.

At Hank Cahill's *Dust Bowl*
Refreshments by: Mal Partridge
Member Challenge: Newsletter Opener
Demonstration: TBD

Meeting Minutes

The meeting was called to order at 7:00 pm at Hank Cahill's Dust Bowl

President's Report and General Business

Guests Wes Gillis, Ken Stevens, Kris Ellis, Phil Todd and Jim Flannery introduced themselves. Wes, Kris, Phil and Jim have become new members.

Hank received and discussed correspondence from CERF, the Surrey newsletter, North Bennet Street School, and South Shore Art Center.

Librarian **John Murphy** was not present and **Lenny Manderville** reported on efforts to recover our missing video. A list of available library books and videos will be published in next newsletter by request.

Wally Kemp reported \$1,175.90 in our Treasury.

It was agreed that a clear acrylic display case should be purchased to protect the Rhode Island Capitol Dome when on display.

We are looking for demonstrators. Any member with ideas should contact **Hank**. Also member volunteers to demonstrate would be appreciated.

Andy Osborne will make arrangements for a demo at the Cracker Barrel Fair in Wrentham on Saturday, September 14th.

Our Audubon Farm Day demonstration will be held in October as usual. **Wally** has paid the fee.

Jeff won a 25ft. rule and **Mal** will pick up a \$100 gift certificate from the Avon *Woodworkers Warehouse* store. It was agreed we would use the gift to purchase tools for the memberships use.

The starter lathe was given to new member **Kris Ellis**. If your interested in an 8ft. 3HP lathe, see **Hank**!

Ernie reported that the RI Ocean Woodturners now have 70 members and he also reported that a person sitting next to him at a meeting was hit in the forehead when a large piece of wood separated from a spinning piece during a demonstration. A shield should be added to our lathe to prevent this from happening during our demonstrations.

Andy mentioned that the Revolutionary Turners that meet at the *Woodcraft* store in Woburn are arranging to accept credit cards when selling their turnings. They now have over 30 members.

Mal sent photos via E-mail and color exhibit posters by mail to Ellyn Einhorn at Audubon for publicity use to promote our annual exhibit to be held from Saturday, November 2 (set up) thru Saturday, December 14 (removal), 8:30 to 5:30 at Audubon headquarters in Marshfield. There will be no reception this year.

A Wally Word

Wally would like to inform our new members that we have been exhibiting at Audubon for 5-6 years and have been pleased with how well our works have been received by the public and how well they have sold. Many people return each year to purchase turnings for Christmas presents, so start building an inventory of turnings for sale or display. This will be discussed in detail at the September meeting.



Library



The Library has a good selection of periodicals and books thanks to the donations by members. A self service system will be used for distribution. The following procedures have been set up to keep track of the collection.

The Librarian has been authorized to spend \$25.00 per month for additions to the library. Members are requested to submit their suggestions for new books, magazines and videos.

Check Out

1. Sign and date control card found in book pocket
2. Place card in index box
3. If checking out a video:
Give \$2.00 rental fee to **John Murphy** or place money in index box

Return

1. Find control card in index box and cross off name
2. Replace card in book pocket

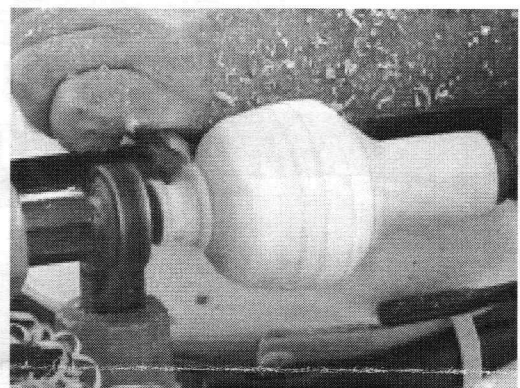
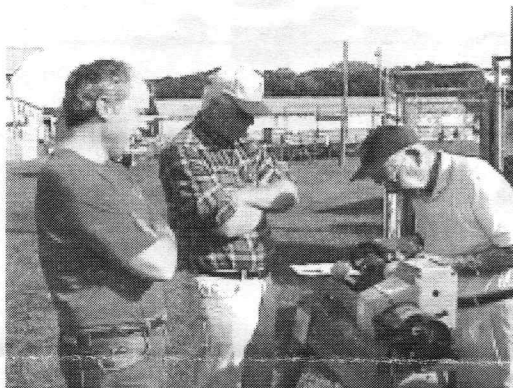
Welcome New Members

Kris Ellis from Middleboro
Wes Gillis from Stoughton
Phil Todd from Bridgewater

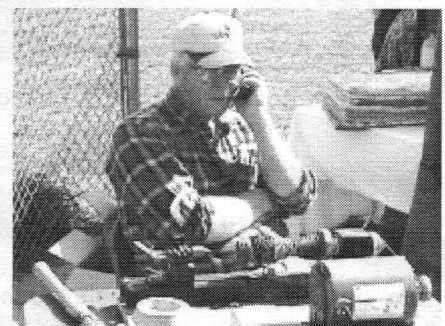
Cracker Barrel Fair Demonstration

Members Jeff Keller, Wally Kemp, Ken Lindgren, Andy Osborne and Mal Partridge demonstrated woodturning at Wrentham Developmental Center, Wrentham, MA Saturday, September 14th, 2002

Thanks to Fair contacts Todd Davis, Tony Moreno, Ingrid and Paula

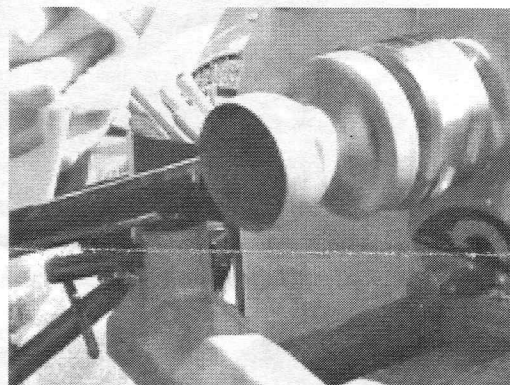
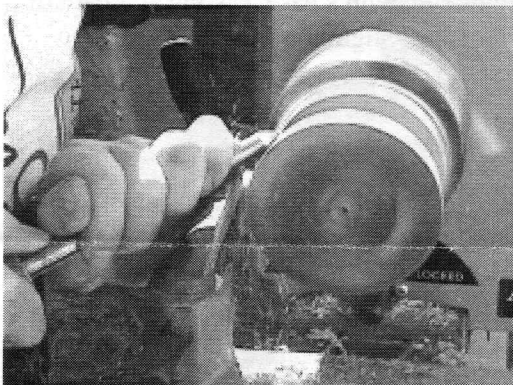


Wally starts turning a sphere using the polygonal method. A hand-held calculator establishes the equator, the tropics, and the polar circles. (Reference Woodturning Methods by Mike Darlow page 85)



The MSSW banner at our location near fair entrance and display table

Don't turn and talk on cell phone!



Wally, Jeff, Andy, Ken and Mal demonstrated woodturning for a sparse but interested audience

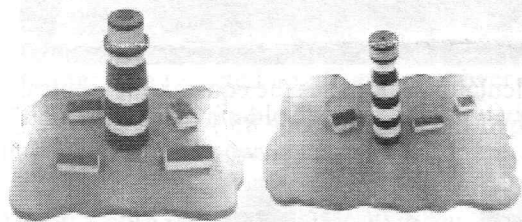
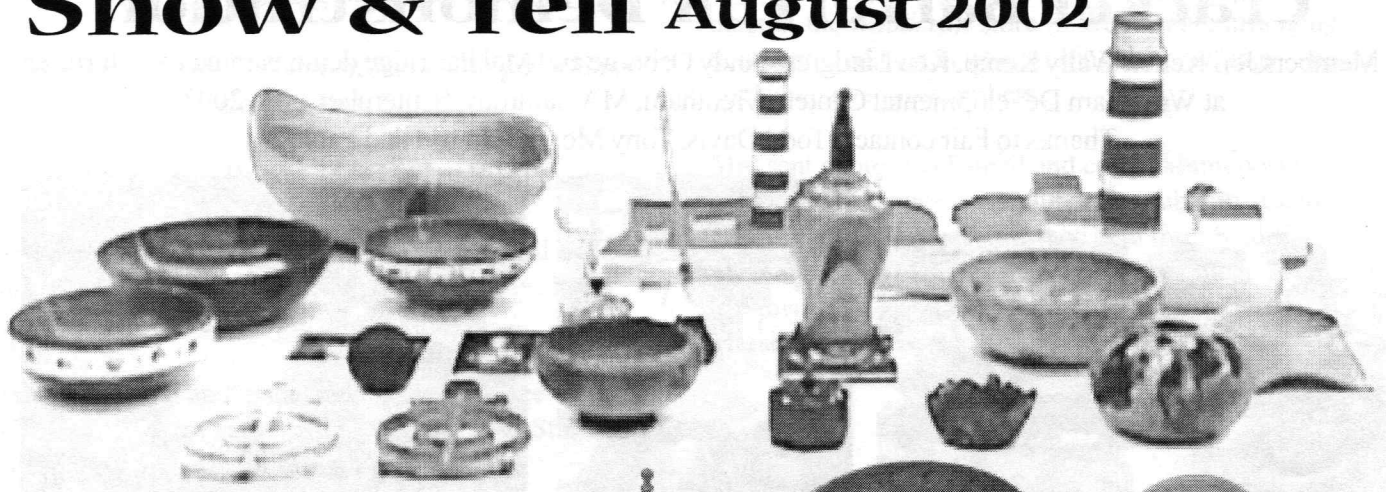
Vote for Member Angelo Iafrate

Candidate for AAW Board of Directors

New England Woodturners Need Representation

Return your ballot before October 21

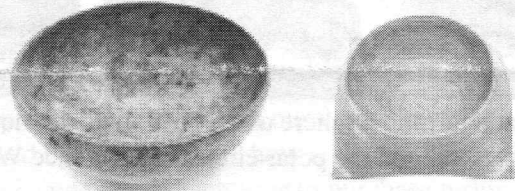
Show & Tell August 2002



Ernie's floaters for CNEW picnic



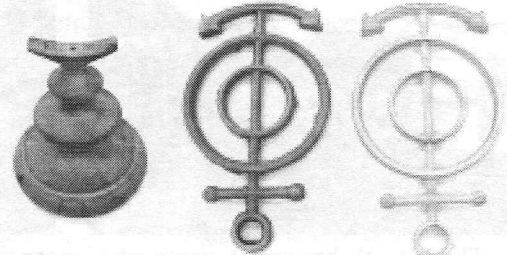
Hank's vase from Constitution laminated white oak, maple burl bowl and cherry square edge bowl



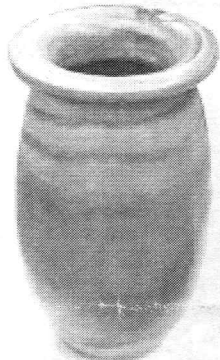
Jessie's ash and maple baseball bats



Rich's cherry burl coaster



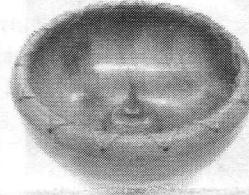
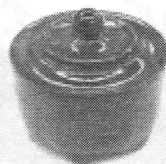
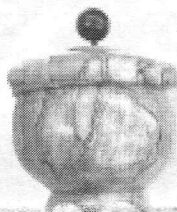
Lenny Langevin's base, casting and pattern for copper light top @ school entrance



Emilio's vase with glass wine bottle lining



Jeff's pen, holly cup & boxes w/legs



Lenny's bowl w/solder wick lacing



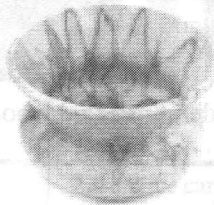
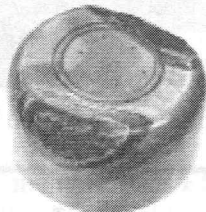
A friend's ball box



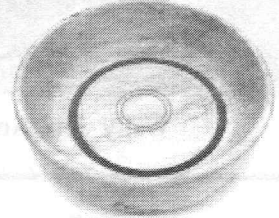
Ron's manzanita burls



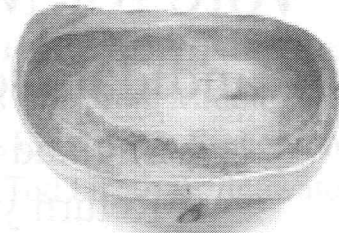
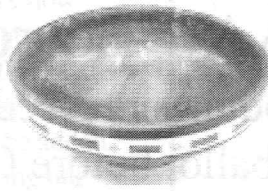
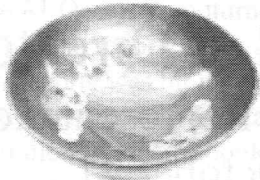
Ken's cherry natural bottom bowl



Andy's spalted ash, cherry and maple bowls



Guest Ken Stevens uses white patching plaster to set off inlays



Wally's cherry crotch bowl - note feather