

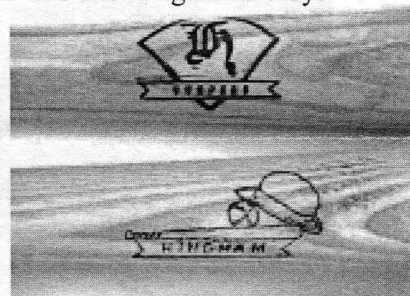
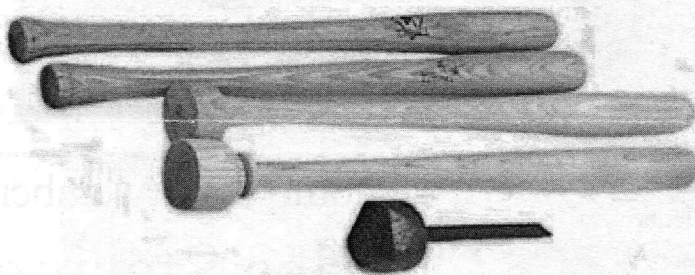
AS THE WOOD TURNS

September 2007 Issue 123

Boys Of Summer



Member Jeff Keller , sitting left, turned and branded bats for the Hingham Historical Society Vintage 1880's baseball teams: The Hingham Coopers and The Hingham Derbys



2007 MSSW Officers

President - Hank Cahill (781) 878-0234
Vice President - Richard Friberg (508) 378-2436
Treasurer - Wally Kemp (781) 871-1390
Secretary - Mal Partridge (781) 843-3883
Librarian - Leonard Mandeville (508-586-7679)
Newsletter - Mal Partridge (781) 843-3883
Web site: <http://www.mssw.sitelinker.org/>



Next Meeting

Tuesday, September 25, 2007, 7:00 P.M.
At Hank Cahill's *Dust Bowl*
Refreshments by: Mal Partridge
Member Challenge: Non-traditional finial box
See details on page 2
Demonstration: TBD

Meeting Minutes

The meeting was called to order at 7:00 pm at Hank Cahill's Dust Bowl

President's Report and General Business

Hank received information about the Totaly Turning Symposium to be held in Albany, NY on October 13 & 14th. He also received the Newsletter from the Surrey England woodturners.

Jeff Keller had an article in the Hingham Journal titled: "Baseball in the 1880s: Turning a Bat". Copies were available for members.

Hand's On was set for Saturday, September 22nd.

Mal submitted Newsletter expenses for five months in the amount of \$255.17 to Wally.

A copy of Wood Magazine, October 2007, with an article "Get Into Woodturning for Under \$600" was made available for viewing.

Mal's binder with articles of interest to Woodurners was passed around. The new Oneway Lathe which allows you to sit down and turn was featured. You can now multitask - sit on the thrown and turn! A "Turn and Go" lathe.

Wally reported \$2970 in treasury. He also mentioned new items available from Starbond and problems with the steel in a new jacknife that replaced a 20 year old one "lost" at airport.

A Beth Ireland CD was given to the library by Wally.

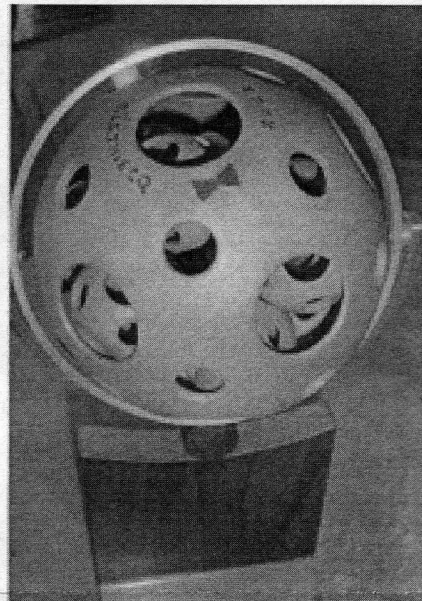
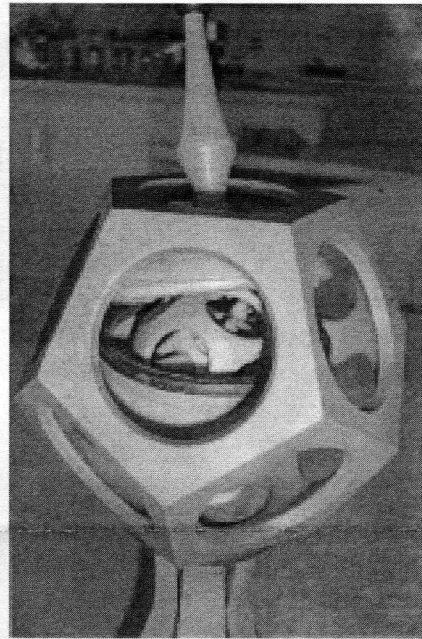
Our exhibit at the Norwell Library is extended for another month. The Corn Festival at Norwell Science Center will be held Saturday, September 15th. We will have Ian's larger 10x20 tent this year.

Hank will be making legs for Brolly Bird.

Nigel announced he has finnished painting the outside of his house. (And can now return to turning!)

Don Diedrich brought in a set of turning tools for sale (make an offer) that belonged to a fellow with Parkinson's Disease and can no longer turn.

Andy had pictures of interesting turnings by a Montreal Turner.



Welcome New Member Charles Stasinios

from Plymouth

Member Challenge

See page 10 American Woodturner Fall 2007 issue and article on pages 46-49. To enter Fall AAW contest go to woodturner.org, then follow links to the AAW online forum.

MSSW Booth at 2007 Corn Festival

Norwell Science Center, September 15th

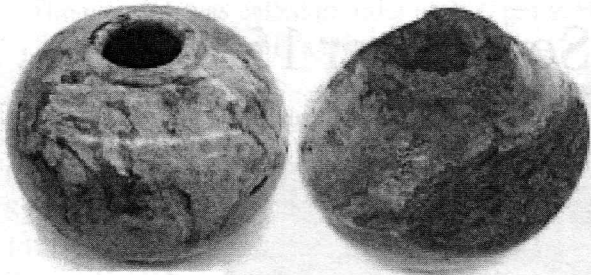


Photos taken between raindrops. Left to right are MSSW members Bob Allen, Bill Dooley, Ed Morey, Ian Manley, Mike Wells, Jim Denker, Ron Robertson, Jim Flannery, and Jeff Keller.

The rain didn't let up until around 3:00 PM and kept most of the customers away. Jeff sold a bowl to one of the event workers at the end of the show for \$80, but he doesn't think anyone else sold anything. There is interest in the upcoming Audubon Farm Day event in Marshfield, however. A visitor to the booth signed up as a new member.

Show & Tell

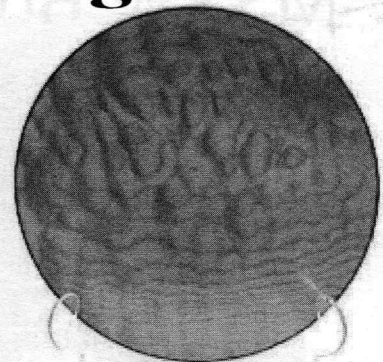
August 2007



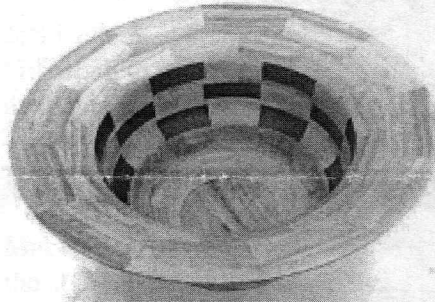
Lenny Langvin's Apple and Cherry Burl bowls



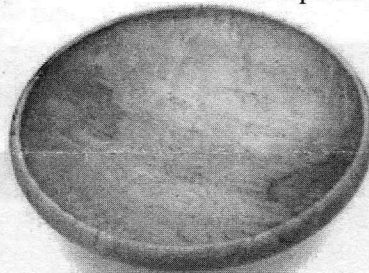
Ben's staved Cedar box with Purpleheart finial



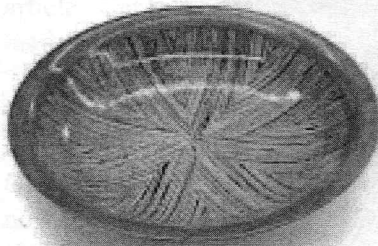
Jesse's Pacific Coast Big Leaf Curly Angle Wing Maple Plate



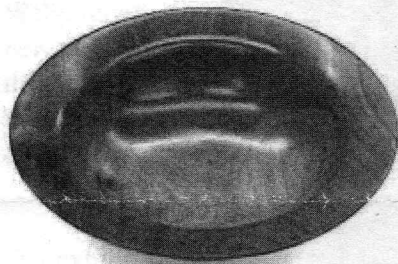
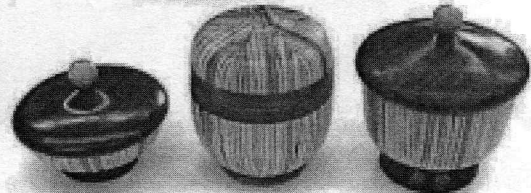
Nigel's segmented bowl from Bamboo flooring scraps and Bird's Eye Maple bowl



Sid's Elm box and Red Oak cup



Wally's large Microlam bowls and "Three small ones"



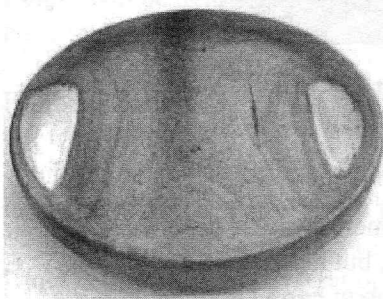
Paul's Walnut bowl and thick Yew Root bowl



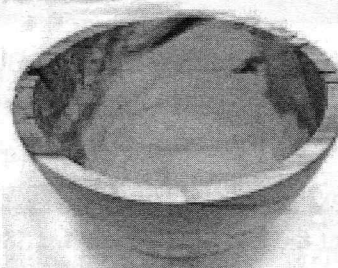
Ernie's tops and fabrication details



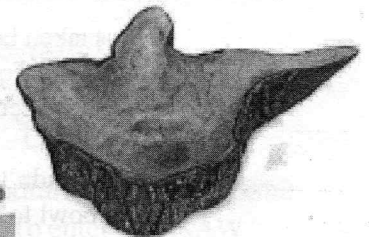
Andy's Ash vase with yellow aniline dye



David's Cherry and Box Elder bowls



Don's turning from Liberty Tree wood and Sketchup photo



Jim's carved Mulberry piece