
AS THE WOOD TURNS

September 2011 Issue number 170

Special upcoming demonstration and workshop

The club is hosting Bob Rosand (www.rrosand.com) the weekend of October 15th & 16th. Bob makes some great Christmas Tree ornaments, lidded boxes, bowls, weed pots, etc.... Cost of the ticket for Saturday is \$27 including lunch. Lunch will be buffet style. There will be free coffee, water and soda available all day.

Please arrive in time for a 9am start. Lunch will be at 12noon -12.30. The afternoon session will start at 12.30 and end at 3.30 or there abouts.

"Hands on" on Sunday will cost \$50 per person with a maximum of ten people/students. Sunday's timetable will be the same as Saturdays.

Contact Dave Rice at dergas5@aol.com or 508-668-3064 to reserve your ticket.

Raffle tickets will be on sale during Saturday, the raffle will be called mid-afternoon..

Minutes of the August 23, 2011 and some notes from the Hands On – September 10th



Saturday, September 10th was the date of the visit from members of the Fuller Craft Museum to Hank's shop for purposes of seeing woodturners in action.

Pictured are (l-r) surrounding Hank our president are Lois Corr, Linda Wein, Phyllis Goldfeder, Steven Corr and Sandy Askim

2011 MSSW Officers

President- Hank Cahill (781) 878-0234
hecahillandson@hotmail.com

Vice president Nigel Howe (508) 537-3394
nbhtumings@yahoo.com

Treasurer Wallace Kemp (781) 826-6254
bbarker417@comcast.net

Secretary Jeff Keller (781) 878-7310
jkeller@nerej.com

Librarian Charles Rosen (781) 848-6589
charlesrosen@comcast.net

Web site: <http://www.msswt.org/>



Next Meeting

Tuesday, September 27, 2011,

Starting 7:00P.M.

At Hank Cahill's *Dust Bowl*

Refreshments by Sydney Katz

Demonstration Steve Wiseman – on turning "Natural Edge bowls"

There was a large turnout for the "Hands-on" session. Several members took turns using our Powermatic lathe.



Bob Scott turns and shapes the outside of a mulberry bowl under Ian's watchful eye.



Ian takes a cut on the mulberry blank. In the background is the belt sander that Hank uses for sharpening gouges

Ron Roberston was busy turning something on the Delta lathe, Bill Dooley tried his hand at turning a bugle bowl, ala Jimmy Clewes, on a Jet mini-lathe, and Glenn was busy cutting up logs for bowl blanks.

Minutes of the August 23, 2011 meeting

Visitors: Bill Abrams from South Carolina (with Bob Allen), Skip Brown from Hanson, Ma, Vanessa, daughter of Michael Veno

Hank- took a moment to express his gratitude to members for their kindness and consideration to him and his family for his recent health issues. He also mentioned that a caller had deposited a load of Mulberry logs out back available to members for turning, and that his son, Peter was anxious to get rid of them. Peter also left us a note- "*Turners – Things To Discuss Tonight*"

-No more wood left down back-

*Limit logs under the table saw to a few (the rest will become my firewood soon)-
Sawdust & shavings after hands-on to be dumped down back behind my boat & dump truck.*

P.S.- No soda cans, or wet cups, on my table saw. Peace.

Business meeting –

Wally reported \$1287. in the treasury. He also held up a page from a Martha Stewart magazine with a photo of a bleached 7" natural edge maple bowl for sale for \$175. *–why can't we get prices like that???*

Nigel said we made a little money on the Jimmy Clewes demo, about \$169. Michael Veno voiced a majority opinion that we wouldn't mind seeing Jimmy demonstrate again.

I announced that in my absence, I had asked Ian to be in charge of the Corn Festival Saturday September 17th at the South Shore Natural Science Center in Norwell where we will have a booth and will demonstrate turning and sell items as we have done in the past. Rain date is Sunday the 18th.

Charlie (as Librarian) announced that the club has purchased 2 videos on Christmas ornaments with a lot of techniques and some new projects. He also announced a new book by David Ellsworth on woodturning available to members.

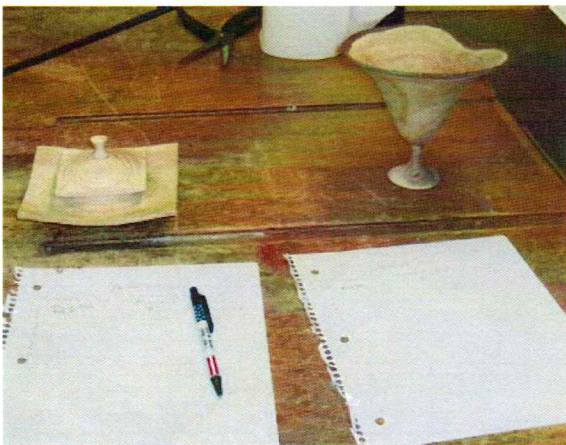
Bob Allen, on behalf of the Committee at Large, reported that the club cleared \$25 more from the Jimmy Clewes demo than from the Bill Grumbine demo, so "we're getting better" at drawing a crowd for these demos.

He thanked all who helped. Bob also announced that we have the platter with the rounded and dyed edge that Jimmy turned of long leaf maple from Downes & Reeder, the natural edge vessel and the square box from the hands on project available to the club.



Nigel made a motion to donate the large platter to Bob Allen for all of his help with setting up and organizing Jimmy's visit.

This was motion was carried by the members.



Next a silent auction was set up for members to write in bids to purchase either the natural edge vessel or the square box.

Highest bid by meeting's end wins either at the price submitted.

At the end of the meeting, the goblet went for \$40 to Steve Wiseman and the square box went for \$25 to Paul O'Neil and now we've added an additional \$65 to the income from Jimmy Clewes' demo.

Nigel proposed that since there is a lot of work involved for demos and demonstrators that we set up a committee with Bob Allen and Dave Rice (since they have already been involved) and add another couple of members as well. This to be decided at next month's meeting. He said we ought to have two demonstrations next year, one in the Spring, and one in the Fall with a hands on the next day. He proposed bringing Jimmy Clewes back. The motion carried.

Wayne mentioned that despite color coding, the parts and tools for the lathes are getting mixed up in their boxes.

Ian proposed a "Tips" page on the MSSWT.org website. Charlie, as webmaster, replied that he had the page just about ready to go up. Also that there is an "Events" page that needs more work.

Nigel mentioned that the club has a gallon of Anchor Seal available for \$16 which Ken bought.

Andy Osborne mentioned that he was still missing his two folding chairs from the July picnic and hands on at Nigel's house. Someone suggested that the chairs could be bought at the Christmas Tree shops for \$8.

Bob Trucchi mentioned Wally Kemp and Bill Dooley's appearance on Fox TV on behalf of the club and congratulated them on the church finial project and table of turned objects.

Someone raised a question about the Hands On scheduled for September 10th at Hank's Dust Bowl being an occasion for the Fuller Craft Museum members to tour and observe members in the act of turning wood. No decision was reached.

Wayne raised the possibility of a collaborative club project for next year's AAW symposium in San Jose. That also brought up the observation and discussion that Jimmy Clewes made about woodturning evolving toward more carving, coloring, finishing and in the process moving away from turning itself.

Raffle –

It was decided to raffle off, at no charge, all the left over items, including various kinds of wood, gift certificates and tools that had been acquired for the April Demo Days event



Anyone who wanted a particular item was offered a chance to get it if they answered some questions that Nigel had prepared.

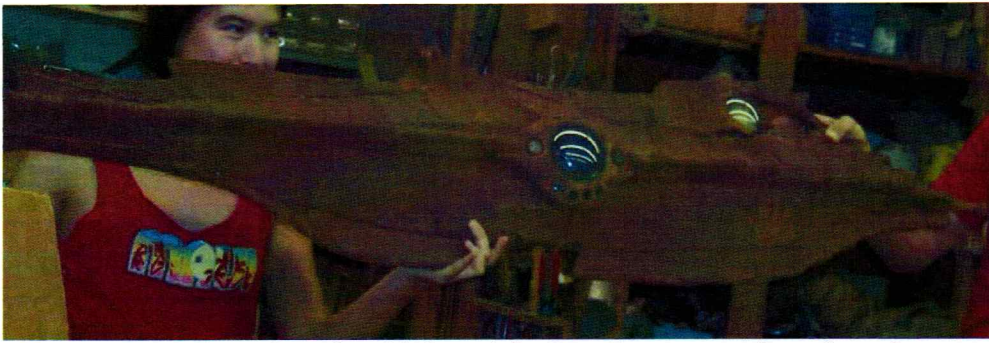
Show and Tell



Show and Tell items



!0" White Oak bowl turned by Jeff Keller



Model of Nautilus submarine fabricated for Boy Scout camp from Styrofoam covered with iron filing and rusted in seawater



Vanessa Veno displays the dollhouse goblet and cup she turned from Cherry



Miniature turnings turned by Mike's son's. His youngest son (Kelvin) turned the goblet on the left and his middle son (Michael) turned the bowl on the right.



Ron Robertson displays a Maple bowl inspired by Jimmy Clewes. It has a brass inlay groove formed first into a v shape. Then brass powder and resin was mixed together and smeared over the top. Ron cut it back to expose the outline of the groove and sanded it the rest of the way.



Fred Ayers with a Cherry crotch bowl. He also had two Apple bowls, all finished with Mahoney's Oil.



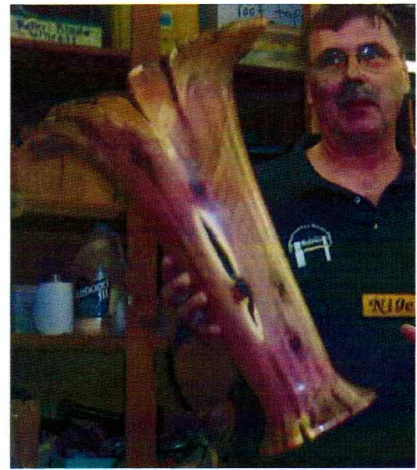
Paul O'Neil shows a shallow maple bowl. He also had one in walnut.



.- Wayne Miller showed us a segmented Yellowheart vessel with dyed and stabilized Black Ash made for TV weatherman, Harvey Leonard. Comes with a six sided die inside complete with weather symbols and an "occluded front" on it.



.- David Ludlow showed us his white Willow bowl finished with mineral oil



Weighing with the "smallest" turning of the evening was Nigel Howe with his Cedar vase with West System Epoxy to stabilize the outside. He prefers a thinner Epoxy sold by Jamestown Distributors, called Smiths Cold CPES epoxy, on sale at the moment for \$30 for a 2 pint kit



Bill George showed us some "Dooley Cedar" in the shape of a small stemmed vessel.



Steve Wiseman displays 2 Berkeley maple pieces made with a boring bar setup complete with plastic inserts to hold water.



Wally Kemp with a piece of spalted bleached Holly finished with wipe on poly. Wally also had an Eastern White Pine bowl with a circle of knots around the outside edge that looks like Norfolk Island Pine



Bill Dooley with a large mulberry bowl. He also had a White Oak natural edge bowl with a feather / crotch pattern in the center.



Andy Osborne with an Amur cork bowl finished with a wipe on poly. He also displayed his Sombrero box of Purpleheart and Maple.



Four bowls from Bob Trucchi in a lacquer finish of maple, ash o different shapes and designs



Ian Manley with a finial box of Ash finished with nothing more than the Beal Buffing System. He also showed a vase of Canary wood, Walnut and Holly, and a weed pot of Maple and Mahagony that utilized a cigar tin holder (from Peter) to hold water--

Demonstration

Tim Ayers- "Big Bowls with a Beginner"

"I've made 25 bowls and I give my stuff away", and with that statement , Tim Ayers proceeded to show us how he does it. ". He started with a computer slide presentation followed by Tim astride the Powermatic a la David Ellsworth in which he showed cuts to make on a large bowl from both the outside and hollowing on the inside.

He starts by slicing a log in half lengthwise. He uses a nail with a string tied to it to form a circle. He then uses a chain saw to to remove the waste. Using screws of an 1 1/2" length, he attaches a faceplate. The log is rough turned into a circle and covered with latex sealer. He comes back later to finish it starting with the outside first. He uses a jam chuck or jumbo jaws to complete the bottom of the outside.

When turning the inside, he goes in from the top about an inch and a half at a time to prevent distortion, gradually working down to the bottom. This also minimizes sanding. For finish he likes oil as in orange oil, mineral oil, Mahoney's Walnut oil or Tung oil for a natural finish.

