



A Chapter of the American
Association of Woodturners

AS THE WOOD TURNS

June 2022

Issue 290



MSSW OFFICERS

President

Joe Centorino
(617) 529-4997
jcentorino@verizon.net

Vice president

Sonny Tice
(617) 835-0810
gmt1113@yahoo.com

Treasurer

Charlie McCarthy
(781) 953-4368
chasmcca@msn.com

Secretary

Kevin Mulligan
(508) 954-9346
kevin.mulligan@yahoo.com

Librarian

Lenny Mandeville
(508) 586-7679
manleo@comcast.net

Webmaster

Tim Rix
(617) 259-5618
rix.tim@gmail.com

Store supplies

Ron Reynolds
(508) 697-3927

Newsletter

Jeff Keller
jtkeller116@gmail.com
Michael Waddell
mwaddell@mwdb.com



Lenny Mandeville showed us these recent items from his shop. Pictured at the top is his segmented wide brimmed vase made from a variety of woods donated to the club by Joe Fisette. Below are four resin "eggs" turned from melee burl and Alumilite. On the lower right is Lenny's pine cone box which is an actual pine cone encased in resin with a maple turned finial top.

Meeting Notes— May 24, 2022 by Jeff Keller

Joe Centorino began by announcing to members that ZOOM was now on two different screens and that wireless mics were in use to improve the speakers' sound quality.

Joe added, "If you're waiting on a name tag, please see me."

He told us he erred; that there was no light on the outside of the facility leading down to the rear parking area but that he had spoken to Peter and we will have one with a motion sensor installed soon.

Joe added, "Dave Burns is in the Royal Norwell Nursing Home. We have an enlarged card for him. If you haven't already, please sign it."

Other news:

- ♦ **The South Shore Arts Festival is coming up and takes place Father's Day weekend from June 17th through the 19th in Cohasset on the Common. Steve Wiseman is chairing this event.**
- ♦ **The AAW's annual symposium will take place in Chattanooga June 22nd through the 26th.**
- ♦ **The Arnold Arboretum will celebrate their 125th Anniversary in the Fall. Steve will also be the chair for this event.**

Joe announced that turning

(Continued on page 2)

NEXT MEETING

Tuesday, June 28
7pm at the "Dust Bowl"
409 Washington St.
Abington, MA 02351

Refreshments by:

Fred Johnson

DEMO:

Ron Reynolds
Making Wooden Tulips

Future Demos Needed!

contact Sonny Tice
gmt1113@yahoo.com

HANDS ON

Saturday, June 11
9am—12pm

Savings: from the president



Thanks once again to the membership for a productive meeting. We welcomed 3 guests and, I hope, soon-to-be members along with **our newest member Michael Fullerton** who embraced the opportunity by participating in the Show & Tell! I am looking forward to more recent members sharing their turnings as well.

We are putting the two donated laptops to good use to streamline the newsletter process and provide a consistent setup for the hybrid meetings.

As we modify the publishing workflow I applaud the efforts of Jeff Keller (meeting notes and Show & Tell), Molly Johnson (WIT updates) and Michael Waddell (formatting and composition). This is a work in progress and may take a month or two to smooth out the tool marks but I have faith we will get there.

I encourage all members to share their thoughts on ways to improve any of the Club activities—simply call, text or email me.

Safe Turning,

Joe

(Continued from page 1)

smocks are available with the club logo and will be personalized with your name. If you want one, they are \$65.00 from Peachtree Wood Supplies. We also have turning aprons with the club logo and your name for \$55.00 in large and extra large. There is a sign up sheet to use for ordering through Saturday, June 11th (the next **Hands On**).

With regard to hybrid meetings with ZOOM, our big issue is audio. Joe said he would like to add a sound mixer to prevent feedback. He told us two laptop computers have been donated to the club. One will be used for ZOOM meetings. The other will be used for the newsletter to enable a more timely release to hopefully come out a week after each meeting. The expense for software is \$150 a year for Microsoft Office.

In the future, please submit your Show & Tell photos prior to the meeting for inclusion into the newsletter by emailing them to Joe (jcentorino@verizon.net).

Sonny Tice said, "I have to start a list for refreshments and also for demos and shop tours."

Joe responded, "The August meeting coincides with the Marshfield Fair so the Fair will take precedence and there will be no meeting for that month."

Charlie McCarthy asked, "What about some professional demos?"

Kevin Mulligan said, "I would like to thank Jeff and Mike for their work on the newsletter."

Charlie reported the club has a balance of \$4,984.67 with a PayPal balance of \$1,369.28 for a total of \$6,353.95. The scholarship fund has \$1,421, leaving the available cash on hand at \$4,392.95.

Molly Johnson said, "There were two of us from the club, Melissa Fantasia and myself, in the WIT Exchange collaboration project along with a third woman turner from Michigan. Teams of three from all over the globe took part. The theme was "Noisy Mimicry" and we were to use that to come up with a pro-

ject. We completed the project and documented it in PowerPoint. It will join in the AAW Presentation of Projects on June 4."

Joe said, "There's some oak out back and also some other large pieces. Wood distribution day will be June 25th after the Cohasset festival. Wood not taken by then may be firewood. Also JSP face shields and batteries for turning masks are sold out."

Ed O'Riordan announced a chainsaw party in Scituate May 21. An email announcement was sent out.

Steve said, "The Memorial Chair Fund honoring deceased members has funds for any active member to go to any woodturning event up to \$200 per person per event. It can also be used for turning classes such as Fuller, Snow Farm or the Eliot School. We've awarded three scholarships so far. We offer mentoring programs as well."

Guest - Jim Kenn, Jr. from Whitman

New member - Mike Fullerton from Stoughton - Welcome to you both!

Chainsaw Party—Saturday May 7th at Blacksmith Lane in Marshfield



(l-r) Ed O'Riordan, Joe Centorino, Vincent Kennedy, and Don Messenger.



Don Messenger uses a peavey to position a log.



Ed O'Riordan saws through a piece of cedar.



A vase Wally Kemp turned from cedar for the Blacksmith Lane property owner, Arlene Marchant, from a tree that fell on her property.

Member Store

<https://msswt.org/resources/store/>

Glues

Description	Price
2 oz. CA	\$4.50
2 oz. Rubberized	\$6.00
8 oz. CA	\$13.00
16 oz. CA	\$23.00
2 oz. Accelerator (spray bottle)	\$3.50
8 oz. Accelerator Refill	\$5.75
2 oz. CA De-bonder	\$3.25
4 oz. Epoxy	\$6.00
2 oz. Replacement Caps	\$0.50
Long Nozzles	\$0.75
2 oz. Empty Bottles	\$0.75
Yorkshire Grit	\$10.00

Anchorseal

Description	Price
Large (approx. 1 gallon)	\$16.00
Medium (approx ½ gallon)	\$9.00
Small (approx. 1 quart)	\$5.00

Sanding & Misc. Supplies

Description	Price
2" Disk	\$3.50
3" Disk	\$4.50
2", 2 ¼" Scallop	\$10.00
2", 3" Replacement H&L	\$0.50
2" Holder	\$14.50
3" Holder	\$16.50
2" Blue Holder	\$xx.xx
3" Blue Holder	\$xx.xx
1/2" Soft Interface Pad	\$xx.xx
Extension	
3" Hand Sander	\$xx.xx
Sanding Taco	\$4.50
2", 3" Hand Held Holder (kidney shaped)	\$12.00
3" Lambswool buff	\$9.00

Other

Description	Price
3D Printed Fibonacci (Golden Ratio) Calipers	\$7.00
3D Printed MT2 Taper Cleaner	\$10.00
JSP Spare Rechargeable Battery Pack	\$148.00
JSP Impact Visor Replacement Kit	\$55.00
JSP Face Seal Replacement	\$20.00
JSP Peel-off Visor Protector (Pkg of 10)	\$35.00
JSP Pre-filter Pads (Pkg of 10)	\$18.00
JSP Particulate Filters (Pkg 10)	\$40.00

LIVE DEMONSTRATION

The live demonstration was an expert panel—Wayne Miller, Steve Wiseman and Ian Manley—discussing **sanding and finishing**.



by Jeff Keller

Steve began by telling us not to sand wet wood.

Wayne added that worn out 100 grit sandpaper is not equal to the new stuff.

Ian said that you should never sand with any grit that is 50% greater than the one being used at the time.

Wayne remarked that you should never sand bare wood finer than with 220 grit. Otherwise you will just blur the grain.

I asked, "What if the wood being sanded is softer in one area than another? You get depressions." I was told that you can reinforce the surface of the softer areas with thin CA glue or sanding sealer first and then it will sand evenly.

"You should use sandpaper like your neighbor is paying for it", Ian remarked, "Don't overwork it."

Steve told us to shine a light across the surface of the area being sanded to observe any scratches.

Wayne said "I use one pound shellac which goes on like water and it doesn't change the color. With end grain or with the grain rising, you can apply sanding sealer. Thin shellac can

be used as a sanding sealer. When dry, you can sand the raised grain."

Ian said that sometimes reversing the direction of the lathe will assist in sanding.

Wayne remarked, "Sometimes hand sanding is the only way to get scratches out.

Steve said that a good trick is to use an orbital sander with the lathe not running

Ian told us that with power sanding, speed is your enemy as you can burnish the wood which you don't want.

Wayne added, "Don't put any finish on until you can't find any reason to sand anymore. Also 1000 grit white Scotch Brite pads are the same as 0000 steel wool."

Ian said that with regard to a once turned bowl, "Use an oil and wax mixture (no water) and wet sand with a thin diluted final finish product with sandpaper which will create a slurry sludge."

Preferred finishes- Wayne, "brush shellac on first, then use a small amount of shellac on a small square piece of rag while the piece is spinning on the lathe."

Food safe- When the piece has dried (cured), any turned item of wood is food safe.



Women in Turning

If you missed the live WIT exchange Presentation of Projects, including our local team's project titled, "Noisy Mimicry" here is a link to a replay of the 2022 show.

<https://www.woodturner.org/Woodturner/Woodturner/WIT/WIT-Home-Page.aspx?100134f70e4f=9#100134f70e4f>

For woodturners looking for inspiration, check out this free, on-demand replay of the panel discussion by three extraordinary women turners. Each woman works in a distinctly



different style, but they all share a keen attention to form and detail. <https://www.woodturner.org/Woodturner/WIT/WIT-Presents-Panel---Dubnoff--Engler--Wang-->

[May-7--2022.aspx](https://www.woodturner.org/Woodturner/WIT/WIT-Presents-Panel---Dubnoff--Engler--Wang--)



6" maple jar by Molly Johnson. The exterior is wire brushed and stained. The interior sports tavern green milk paint. The lid has a pop fit. Yes!



Heads Up!

The **South Shore Arts Festival in Cohasset** takes place on Father's Day weekend. We have eleven people signed up and we have a booth to display and sell turned items and a booth for demos. Any member can join. Sign up to sell, demonstrate or set up. The hours are Friday, June 17th 1:00 to 7:00, Saturday, June 18th 10:00 to 7:00 and Sunday, June 19th 12 noon to 5:00. If you are planning to sell, we need to have your items by Friday at 10:00 a.m. with a list with prices and numbers. The minimum price of any item this year is \$25.00. Money will be collected through the club. You will get a check for items sold less the cost of the exhibit and any credit card fees for your sold items. We have six five foot tables with shelves. Each member displaying will get approximately six feet of space. Demonstrators must be AAW members (for the insurance).

Steve said setup for Cohasset will be Friday, June 17th by 9:00 a.m. "We need shelves, black table covers and a table."

ARNOLD ARBORETUM

@May 18, 2022



The cutting is all done..... for now.....(L-R John Delrosso, Sonny Tice, Wayne Sargo, Bill Vey and a member from CNEW)

Special thanks to MSSW members Andy Osborne, Ken Lindgren, Billy Martin, Bill Vey, Ed Ambrosia, O'Riordan, Wayne Sargo, Sonny Tice and Joe Centorino who participated in the harvest and transportation of the bounty back to the Dustbowl. Please remember that wood is only available on meeting nights and during Hands-On.

John informed us the arboretum is very concerned about Ambrosia beetle infestation, and although woodturners find the effects of the beetle on the wood to be desirable, the Ambrosia beetle further damages already stressed trees of all species. Find out more about the beetle here: [https://www.fs.usda.gov/Internet/FSE_DOCUMENTS/stelprd-](https://www.fs.usda.gov/Internet/FSE_DOCUMENTS/stelprd-b5349704.pdf)

The Arboretum will be staging the logs for future harvests covered with a dark tarp on the blacktop area of the maintenance yard as a way to control any beetles in the wood.

John has asked that clubs who benefit from this wood consider donating turned pieces to the Arboretum for them to use as gifts for large donors as well as volunteers. The starred (*) species below are especially desired as donations. This is a small ask for a very valuable resource. Please contact [Joe Centorino](mailto:jbcentorino@verizon.net) (jbcentorino@verizon.net) if you have pieces turned from Arboretum wood to give back.

(continued next page)



Head Arborist John Delrosso speaking about the proliferation of the Ambrosia beetle (L-R John Delrosso, Andy Osborne, Ken Lindgren, Wayne Sargo, Francois from ART and Ed O'Riordan)

(Arboretum—continued)

Species harvested:

Kalopanax - Castor Aralia
*Apple (Donald Wyman arboretum signature species)
*Dawn Redwood
Cork Tree
Cherry
Elm
Pecan
Sycamore
Stewartia
Sorbus - Korean Mountain Ash
Hawthorne
Chamaecyparis- False Cypress
Taxus - Yew
Betula lenta - Sweet Birch
Rhus chinensis - Chinese Sumac
Chinese Elm

Starred (*) species above are especially desired as donations back to the Arboretum.



Ed marking the logs for John to cut
(L-R Sonny Tice, Andy Osborne, John Delrosso, Ed O'Riordan,



John Delrosso has a deft touch with the chainsaw



Some CNEW Members labeling the cut logs

CNEW, ART and MSSW attended and divided up quite a bit of wood.

BRING BACK

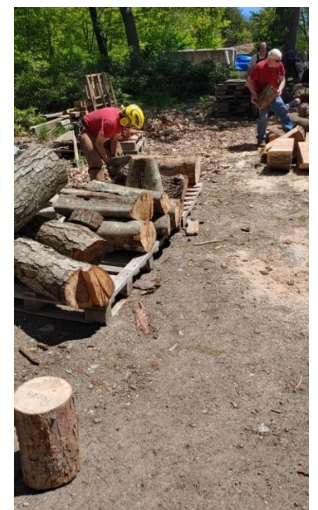
- ◆ Vince Kennedy turned a wooden mallet from walnut, cherry & maple which was won by Steve Wiseman.
- ◆ Fred Johnson turned a shallow bowl from cherry which was won by Molly Johnson
- ◆ John Shooshan turned a salt cellar in ambrosia maple which was won by Billy Martin



Woodpile at the Dustbowl including the recent proceeds from the Arboretum.



A plethora of Taxus (Yew) logs marked and ready to be divided up.



The pile is slowly disappearing

Serious dust collection info! This article from AAW (2006) describes realities and solutions to dust. The expert is a wood turner in Central New York, who consulted on dust management in many industries.
<http://aaow.informz.net/z/cjUucD9taT0zNjM0MzcyJnA9MSZ1PTQxMDA1OTY5NSZsaT0zNTE5NDA5Mg/index.html> (access for AAW members only—why don't you join?)

Show & Tell



by Jeff Keller



New member, **MIKE FULLERTON**, holds a birch bowl turned from dry wood.

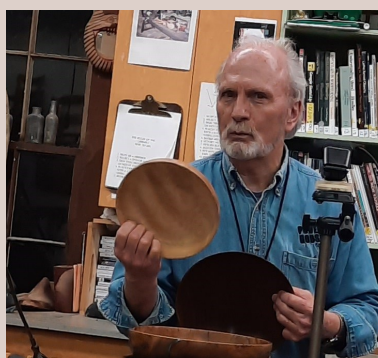


Here Mike holds a black walnut bowl he turned and finished with Watco Oil.

Please submit your Show & Tell photos prior to the meeting for inclusion into the newsletter by emailing them to Joe Centorino—jcentorino@verizon.net.



Pictured is a large cherry burl natural edge bowl from the lathe of **Andy Osborne**...it was one of three pieces cored, the other two have been sold. Andy explained that he used the same bag to dry the piece and removed it from the bag each day reversing the bag before reinserting the piece to facilitate slow drying. He spent a month doing this.



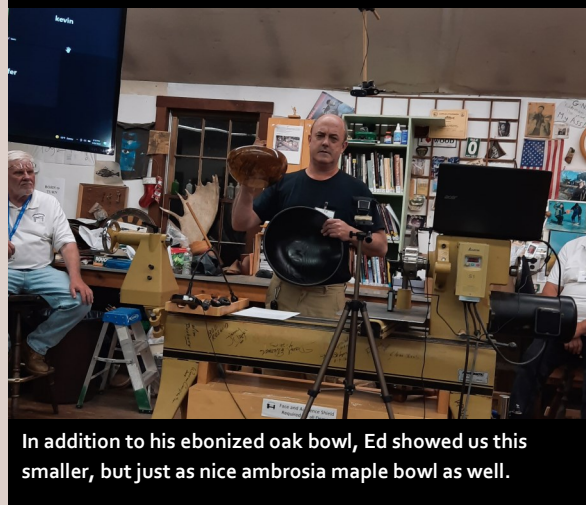
In this photo, Mike showed us a flame birch bowl.



Mike also turned a black walnut bowl with a flame birch bottom.



Ed O'Riordan showed us this ebonized oak bowl using iron filings (from his grinder) with vinegar to give a deep ebony look.



In addition to his ebonized oak bowl, Ed showed us this smaller, but just as nice ambrosia maple bowl as well.



Pictured in Horace Luken's hand is his fir burl natural edge hollow form. Interesting piece. To its right is his natural edge hollow form turned from maple. Horace finished both pieces with tung oil.



Ken Lindgren's willow burl natural edge bowl (below is a close up). Ken thought it was too yellow and too plain when finished. He told us his father believed you need a frame around your art so he textured the outer edge and then dry brushed it with black and then gold paint around the frame. He filled the crack with coffee grounds and added a branch design with a piercing tool. It also has three feet on the bottom not visible in this photo. He finished it with wipe on poly.



Fred Johnson turned these small snow men and Christmas trees, the latter to which he added a little holiday glitter and finished in lacquer.

Here is a closeup photo of Fred's Christmas trees.





You're looking at a large maple burl bowl with the remains of some termite infestation. Joe Centorino used a Burnmaster to highlight the spalting patterns.



Pictured is a side profile of Molly Johnson's natural edge bowl turned from pear. It measures 13" in diameter. Molly explained that the inner part shows some tool marks which serve to act as reflections on the surface of a pond.



Here is a complete picture of Molly Johnson and Melissa Fantasia's collaboration with Kathleen Gardiner from Michigan on behalf of the WIT (Women In Turning) Exchange. Their theme was "Noisy Mimicry". At the bottom is Molly's natural edge bowl showing some fish circling a duck. Flanking it are some carved and painted birds with eggs. In the rear is a setting of a bird bath with a live fountain and the turned and carved birds enjoying it by Melissa ("Bee") Fantasia.



Here's a closeup of Molly's bowl, carved bird, and egg from the photo at left.



This is a photo of Ian Manley's hat that he made after watching a demo by Johannes Michelsen. The wood is big leaf sugar maple. Ian pointed out, "When you are turning a hat on the lathe, please don't shut it off because it will start warping immediately. Turning the hat is a good exercise for tool control." Ian said the hat has a thickness of only $\frac{7}{64}$ ths of an inch. He said it's advisable to have a light on close to it which will show through the thinness of the grain when turning to help keep it a uniform thickness.

Please submit your Show & Tell photos prior to the meeting for inclusion into the newsletter by emailing them to [Joe Centorino](mailto:jcentorino@verizon.net)—jcentorino@verizon.net.



Pictured is a smaller hat turned by Johannes Michelsen which Ian won in a raffle.