



A Chapter of the American Association of Woodturners

# AS THE WOOD TURNS



January 2024

Issue 307

## MSSW OFFICERS

### President

Billy Martin  
617-347-3264  
billyjoe1185@verizon.net

### Vice president

Sonny Tice  
(617) 835-0810  
gmt1113@yahoo.com

### Treasurer

Ernie Leep  
714-655-7688  
eoleep@yahoo.com

### Secretary

Horace Lukens  
(601) 832-7738  
hclsail@icloud.com

### Events Coordinator

Melissa Fantasia  
781-752-6464  
mafantasia1@gmail.com

### Webmaster

Tim Rix  
(617) 259-5618  
rix.tim@gmail.com

### Hands On Coordinator

Glenn Siegmann  
617-462-9573  
gcsiegs@gmail.com

### Newsletter

Jeff Keller  
jtkeller116@gmail.com  
Michael Waddell  
waddellml@gmail.com



Joe Centorino got five bowls from a Cherry burl for the price of one! (plus a One-Way Coring System )

## Meeting January 23, 2024—Notes by Jeff Keller

· New president **Billy Martin** began the meeting by welcoming guests **Brian McDonald** from West Bridgewater and **Carl Sjoquist** from Scituate to the meeting.

· **Billy** brought the group's attention to two sign up sheets he had placed on the table. The first one requested

volunteers to haul the club trailer to our five main show events during 2024, including the Maple Festival and the Corn Festival in Norwell, the South Shore Arts Festival in Cohasset, the Arnold Arboretum show and sale in Jamaica Plain and the Marshfield Fair. **Those with a truck and a trailer hitch please take note.**

· The second sheet is for those wishing to participate in the upcoming Maple Festival at the South Shore YMCA Natural Science Center in Norwell on Saturday, March 2nd. from 10:00 am until 2:00 pm. We will be turning tops and other items for the kids and have space to sell our turned pieces in as well. **Contact Billy to participate.**

· **Billy** mentioned that the club Christmas party in Abington had 40 attendees and was an enjoyable event. He told us that the club will be using the same facility this December and that we need as a club to sign up and send them payment now to hold the facility

for us. A vote was taken and passed to follow through on.

· Woodcraft in Walpole currently has a Bowl Competition

*(continued next page)*

## In This Issue

Feature Photo	1
January Notes	
In Memorium: Emilio Iannuccillo	2
Bright Idea—Think Ahead	
Demo—String Steady Rest	
Bring Back	3
Glenn Schaffer Update	
Show & Tell	4-6



## NEXT MEETING Tues, February 27

7pm at the "Dust Bowl"  
409 Washington St.  
Abington, MA 02351

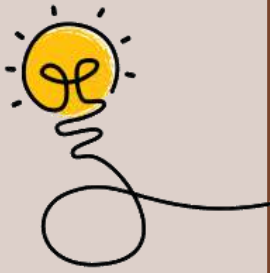
*Refreshments by:*  
**Fred Johnson**

*Demo by:*  
**Fred Johnson**  
Turning Ornaments

## NEXT HANDS ON

Saturday Feb. 17  
9am—12pm

*Need a Hands On mentor?*  
Contact Glenn Siegmann  
gcsiegs@gmail.com)



## Think Ahead

From Ron Brown's newsletter

See Ron Brown's Best:

<https://longworthchuck.com/>

Certain things make your life much easier if you do them at the proper time. Woodturners learn the importance of WHEN to do something, usually after they forget to do it and have moved on to the next step and can't go back.

Sometimes you see it coming after it is too late. Here's an example:

### Twice turned projects

You rough-turned a bowl from green wood and it has now dried. You are ready to finish turning it but it has gone dramatically oval, including the tenon. Your 4-jaw chuck won't seat properly. You are finding it very difficult to center your work. You could have added a very simple, 5-second step that would greatly simplify your life:

### You could have left a divot in the center of your tenon.

Then, using a jam chuck, bring the tailstock with a pointed live center into the divot and secure your bowl. True up the warped oval tenon to round again and the 4-jaw chuck will now hold the bowl properly for final turning!

(Continued from page 1)

contest going which ends February 11th for the best turned bowl in four categories. The winners will be announced on Super Bowl Sunday. Entrants get a 20% discount coupon for taking part.

• Dues for 2024 are now due. It is still \$50.00 for your annual membership. Billy apologized for not being able to accept payment that evening since **Ernie Leep**, our new treasurer, is on vacation. But he stated that members can visit the club web page (at [MSSWT.org](http://MSSWT.org)) and enter their credit card information to secure their membership.

• The Arnold Arboretum has donated a box of 2024 calendars and members were invited to help themselves.

• **Sonny Tice** thanked **Fred Johnson** for again providing refreshments for the meeting intermission break. He also announced the upcoming demo on String Steady Rests by **Charlie McCarthy**. He added that he is looking for future demos from members such as one on bowl bottom finishing and another in (possibly) April by **Wayne Miller** on vacuum chucks. Maybe one on different finishing techniques by **Wayne Sargo**?

• **Lenny Mandeville** told us that Plymouth Library has a show in September and that

it is one the club might want to consider participating in for its two days with an outside booth to sell turned items. It is a large show with 50-100 tents and has been well attended in the past.

• **Horace Lukens** said he has badges available for new members.

• **Billy** said that he will be having a conversation with Horace and Ernie soon on showing members an accounting of the club's money in the form of a report. He added that the club currently has \$7,933. on account. This includes \$2,322. in scholarship money available to members for woodturning events. He went on to say that while this figure of the total of the cash on hand sounds like a lot, consider for example that the club pays \$2,300 of that a year to meet here in the Dust Bowl. It can go fast.

• **Glen Siegmann** announced after consultation with members that the next Hands On will take place Saturday February 17th at the Dustbowl from 9am-12. He added that for new members, turning here is "way better than watching something on YouTube."

• **Molly Johnson** said Women In Turning (WIT) will host a gathering in February entitled, "Working On Skill Building Through Spindle Turn-

ing". She noted that turning honey dippers or letter openers were good projects for this.

• **Steve Wiseman** reminded us that the club scholarship fund, which was originally enacted on behalf of our departed members, is available for all members in segments of \$200/year for the cost of any program related to woodturning.

• **David Rice** announced that members should not forget that Totally Turning is coming up and to make plans now to attend the two day expo and classes in Saratoga Springs, New York Saturday and Sunday March 23rd. and 24th. He added, "If you sign up to volunteer in advance, you can get in for free."

• **Lenny** announced, "Wayne Sargo brought in a bunch of woodturning books. Please help yourselves."

• **Mike Fullerton** said he brought in two old saber saws and that they need some work but are free to members. He also had a power block plane.

• **Billy** announced that the South Shore Arts Festival in Cohasset on Fathers Day weekend needs us to pay them in advance now to hold our space. but that we'll get it back at the show from participating members.

### In Memorium:

### Emilio Iannuccillo

by Jeff Keller



Emilio displays a bowl turned by Andy Osborne, Dec. 2011

*When I joined MSSW in June of 1998, Emilio Iannuccillo*

*was already a member. Although he is not listed in the club's first newsletter in 1997, he must have joined soon after. Hank Cahill and Wally Kemp along with others used to travel to Worcester for meetings with the Central New England Woodturners, which is where they met Emilio. Soon afterwards, the "Rhode Island contingent" as Hank referred to them, began attending meetings at the Dust Bowl. Emilio was very interested in woodturning and he*

*was a regular at club events, meetings and Hands On gatherings. He turned some unusual items like a wooden fountain for his wife's garden that continually sprayed water through a contained circulatory system. Emilio was close friends with former member Ernie Grimes and they used to ride together to attend MSSW meetings. After Ernie got sick before his demise in June of 2013, Emilio stopped coming. He said it just wasn't the same coming alone.*

## BRING BACK

At monthly meetings, members receive a raffle ticket. Each winner gets a turning created by the previous *Bring Back* winner. Each new winner then has to **Bring Back** one of their own turnings for the next meeting.



Ken Whiting's self winding top turned from mahogany and maple. Presented in Ken's absence by Jeff Keller, Tom Ritchie was the winner.



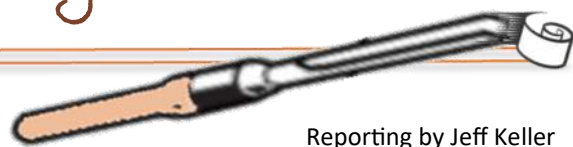
Glen Siegmann holds a Tri Cornered Bowl he turned after watching Steve Wiseman's demo last month. The wood is maple, walnut, cherry and padauk. It was won by Tim Rix.

### Update on Glenn Schaffer:

Glenn was readmitted to Beth Israel Cardiac Direct unit with elevated troponin level. He is back home and in less pain. Calls and visits are most welcome.

# Demo: String Steady Rest

With Charlie McCarthy



Reporting by Jeff Keller



Charlie is holding a large steady rest to show us different features it has including magnets on the bottom. The "C" shape was made using a template

Charlie began by telling us that most turners make their own string steady rest but they can also be purchased. He showed us some *trembleurs* from the French woodturner, Jean François Escoulen, which were four feet long and encased in glass tubes. He also presented a series of his own very thin stemmed goblets lined up on the lathe's ways.



Pictured are several examples of very thin stemmed goblets Charlie has turned using a variety of woods.

With regard to setting up for using the string steady, he said that you should avoid the pith when you bring up the tail stock. Charlie likes the One Way live center for the tailstock because it has minimal torque exerted on the piece.

You start by truing your piece up. A spindle gouge works well for this. Charlie discussed making a steady rest. He displayed several samples in which he had incorporated a "C" shape for ease in getting it on and off the lathe. He said he started with making a template for the "C" first. He also wants to make

steady to secure it to the lathe's ways.

Charlie likes to use the bedan for turning and shaping. He said an advantage to using it is that you can use the bevel up for cutting or down for scraping. You can move it sideways like a skew as well. In turning thin stemmed pieces it is important to work on just one inch at a time which includes finishing before moving on to the next section. He stressed that it is "important to have plenty of time allocated and that you should be well rested which helps concentration."



Charlie has his string steady rest all set up and ready to go. He can slide it to either side as he goes, which he said is necessary in being able to turn and finish only about an inch at a time.



Charlie makes most of his steady rests. A few are shown here on the back bench.

sure it is wide enough for the ways at the base. He uses regular jute string (you don't want it to friction burn). He adds magnets to the bottom of the



# Show & Tell

Compiled by Joe Centorino and Jeff Keller



Wayne Sargo



Wayne holds a lidded bowl, dyed blue, that he turned with Jimmy Clewes. The lid features a piece of cast pewter using a secret technique. With Hampshire Sheen rubbed on finish on top of sanding sealer. Wayne finished it with some Yorkshire Grit.

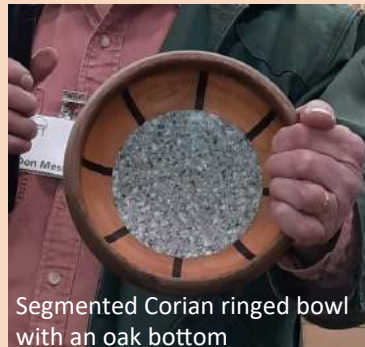


Wayne also turned this piece in Jimmy Clewes' class. The colored edge is sprayed with lacquer and then he rubbed in some gold coloring. He darkened the outside edge using a Sharpie.

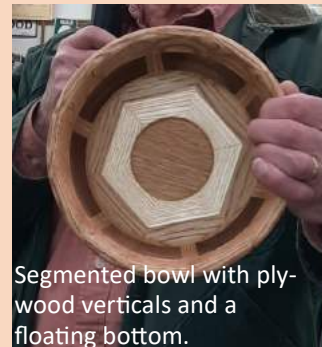
Don Messinger



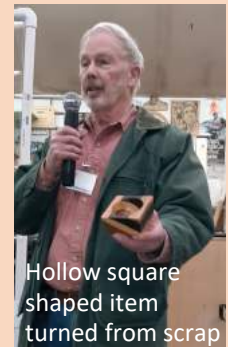
Natural edge cherry bowl



Segmented Corian ringed bowl with an oak bottom



Segmented bowl with plywood verticals and a floating bottom.



Hollow square shaped item turned from scrap

Ken Lindgren



Ken told us this large Ash bowl developed cracks which he filled with sawdust and CA glue only to have to repeat the process after the bowl dried further and they expanded. He presented it with two clamps added to stop its distortion. He stained it to accentuate the wood grain. He also filled the bottom underneath with coffee grounds and yellow glue, which is water soluble.



Ken shows the underside of his Ash bowl

# Show & Tell

Andy Osborne



Andy showed two bowls turned from beech. One of which he dyed a reddish color. He said he used a trim router to cut the stave-like pieces and left a band of wood on the insides.

Joe Centorino



Joe holds a large vase turned from Elm burl using the Lyle Jamison Hollowing System.



Medium size bowl finished with tung oil and the Beal Buffing System.



Joe turned this large "bowl within a platter" from elm burl in which he added a minwax wood hardner. He added a maple base with carved feet



Joe shows the underside of his Elm burl piece with the maple feet.

Horace Lukens



Horace showed us a nice Apple box with a good fit to its lid. He used some yellow glue on the inside of the lid for tighten the fit. Finished with tung oil and Minwax.



Horace holds a spruce burl hollow form. He used a tung oil finish on it.

Mike Fullerton

Mike Fullerton holds a segmented goblet with three captive rings turned from some glued up maple and blood-wood.



Peter Soltz



Peter's oak turned urn. He fixed cracking with wood shavings and CA glue. Finish: 2 coats Watco Dark Walnut.



Peter's "mystery wood" bowl with a Minwax Polycrylic finish.

# Show & Tell

Fred Johnson



Fred's large vase turned from spalted Maple. He used a Dremel tool for the holes which he then painted with gold paste. It has a lacquer finish.

Steve Wiseman



Steve holds a tri corner box he finished from his demo at the November meeting.



Steve's Cherry burl bowl with Alumilite resin added to fill what appears to be air spaces.



Steve has a large bowl turned from Japanese hornbeam wood from the Arboretum. Nice grain pattern.



Steve showed us this natural edge bowl, one of two from the same piece of wood

Carl Sjoquist



New member Carl Sjoquist after only two months of turning has two small bowls. On the left it might be ash. The one on the right looks to have a base and is a burl. Nice work!



Carl has what appears to be an ash bowl on the left and a (cherry?) burl bowl on the right.



Carl holds a larger maple bowl in this photo.



Carl showed us this small bowl that came apart. He says he plans to glue it back together.