



A Chapter of the American
Association of Woodturners

MSSW OFFICERS

President

Billy Martin
(617) 655-7688
billyjoe1185@verizon.net

Vice President

Sonny Tice
(617) 835-0810
gmt1113@yahoo.com

Treasurer

Ernest Leep
(714) 655-7688
eoleep@yahoo.com

Secretary

Horace Lukens
(601) 832-7738
hclsail@icloud.com

Librarian

Lenny Mandeville
(508) 586-7679
manleo@comcast.net

Webmaster

Tim Rix
(617) 259-5618
rix.tim@gmail.com

Events Coordinator

Melissa Fantasia
781-752-6464
mafantasia1@gmail.com

Hands On Coordinator

Glenn Siegmann
617-462-9573
gcsiegs@gmail.com

Newsletter

Jeff Keller
jtkeller116@gmail.com

AS THE WOOD TURNS

September 2024

Issue 315



There was a craft show Saturday, September 28th at the First Parish Church in Norwell center. Pictured with their wares are Don Messinger and Jeff Keller.

Meeting Notes

Guests included
Angela Van Laarhaven
from Taunton

Don Tressler
from Cohasset

John Robertson
from Plymouth

Billy reminded us that the
Corn Festival takes place
October 19th (rain date
the 20th) at the Hanover
YMCA from 10:00 to 5:00.

He has a sign up sheet for
members to help.

NEXT MEETING

Tuesday
October 22, 2024
7:00 P.M.
at the Dust Bowl
409 Washington St.
Abington, MA 02351

Refreshments by:
Fred Johnson

Demo by:
Michael Venio
topic: to be announced

NEXT HANDS ON
October 12
9:00 - noon
at the Dust Bowl

Need a Hands On Mentor?
Contact Glenn Siegmann
siegs@gmail.com

Meeting Notes

The Arnold Arboretum show October 26th and 27th has a setup date of Thursday the 23rd.. There will be lathe demos at 11:00 am Saturday and Sunday provided by our group. We will also need members to talk to attendees. Melissa is coordinating sign up for both items for sale or display and member participation.. Fred Johnson has volunteered to demonstrate Saturday at 11:00. Steve Wiseman has volunteered to demonstrate Sunday at 11:00.

We will also have a lathe set up outside the Arboretum and will have a demonstrator there as well, Carl Sjoquist on Saturday and David Rice on Sunday. Billy went on to say that members can bring items for sale to either his house or to Melissa's home. "We need them by October 1st.", he added.

Billy announced that he is hosting a chainsaw party Saturday, September 28th at his home in Hanover starting at 10:00 a.m. The street address is 1185 Broadway.

New member Joe Wheeler announced that his truck parked across the street has walnut logs in it available to members, "So help yourselves."

Melissa told us Carl Sjoquist sent her an email for hosting the Scituate Artwalk October 5th. It will take place from 10:00 to 4:00. There will be tables to display items for sale or show under a 10 by 10 foot tent and a small lathe to demonstrate turning on.. It will be at 51 Front Street in Scituate. Carl is running it. You can email him at carl.sjoquist@gmail.com.

Melissa explained that the Ymca had been all set to go forward with classes to train future woodturners until they wanted us to sign waivers which were not in the club's best interests. "So we are looking for other opportunities", she added. "With regard to the grant, the AAW said we could find another venue."

Joe added, "We're also exploring feedback for the Council On Ageing."

Geoff Wilkinson announced that he has six display panels 6 1/2 feet by 4 feet with stainless steel mesh which stand up. There are also three smaller panels. If interested you can send him an email at gww@bu.edu.

Glenn Sigmann said after a vote that the next Hands On will be held at the Dust Bowl Saturday, October 12th from 9:00 am until noon.

Sonny thanked Fred once again for supplying refreshments for the meeting break. He added that Steve Wiseman will be turning a half moon piece shortly and that Michael Veno will do a surprise demo (to be announced) at the October meeting.

Horace reminded us that name badges are in a box on the table by the door. "If you've lost your identity, it's there."

Ernie gave us the finance report. He said, "The club has \$5589 on account. That is part of a total of \$8202 with \$1722 for

scholarships. There is \$707 in the trailer fund." He added, "I also have rulers with a large magnet to attach to a metal surface for sale for \$5.00 each. Proceeds to go to the trailer fund. One person has already paid dues (\$50.) for 2025. For new members only, if you pay up on or after October 1st. for 2024 membership, we will extend it to include all of 2025."

Billy told us the club delivered all 55 vases to the Arboretum for their Awards Dinner to donors. "We need to send them a bill", he added.

Billy went on, "As you know, elections for club officers are coming up in November. Nominees will be entertained at the October meeting. Officers can serve up to four years. Sonny is finishing his four years so we will need a new vice president. Also I am going to finish my one year as president but it has been a lot of work and I don't wish to continue so we will need a new president as well."

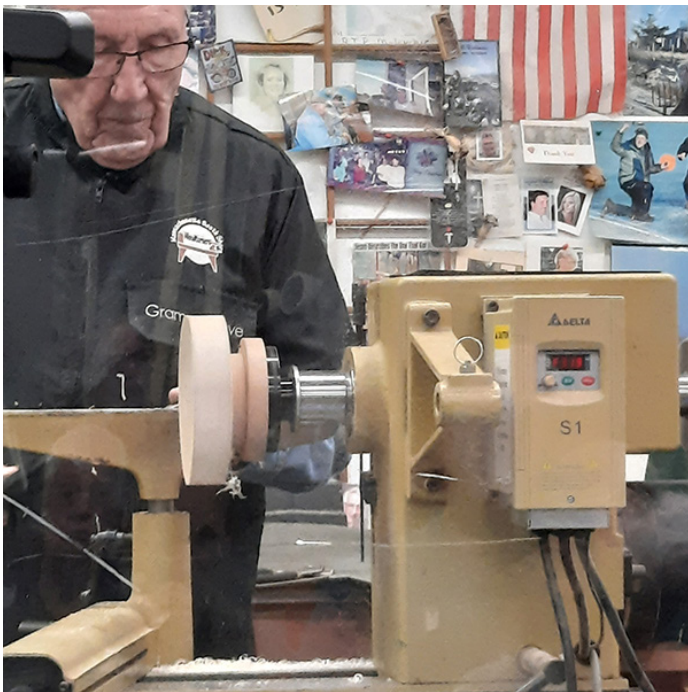
Demo: Half Moon Piece

Steve Wiseman did a demo on making a half moon piece on the lathe. He preceded it with a handout listing the following steps-

Prepare a blank approximately 6" round by 1 - 2" thick. He added, "I try to use a straight grain or a burl blank." Attach a glue block to the best face. Hollow the piece leaving a tenon on what will be the inside. Insert the tenon into a chuck (or mounting of your choice). Turn the outside to a shape pleasing to you. Mark the centerline of the piece (on a grain line if possible). Attach the piece to a piece of scrap wood and cut along the centerline. I use a table saw for this. Glue the two pieces together.



Steve holds up his half moon piece at the beginning of his demo.



Steve has mounted the blank onto the lathe with the chuck holding it by the glueblock as he begins to turn a tenon.



Pictured is the back of Steve's glueblock and blank using a nut embedded into the back to allow for screwing it onto the headstock.

Demo: Half Moon Piece

Steve in his presentation also added “The half moon piece is actually a shallow bowl cut in half.” He went on to say that by using glueblocks, “You don’t lose any of the thickness of your blank. He told us he mainly uses carpenters glue but hot melt glue is good also to glue the two halves together. Steve began with a glueblock holding a 6” piece of maple. He first turned a tenon on it using a draw cut with his bowl gouge and then proceeded to hollow out the inside around the tenon. He left a 3/8ths” wall. Next he

parted the blank off the glue block.. He trued up the face of the remaining tenon and partially hollowed the inside. He told us he only wants to glue the edge of the ring. Now he mounts the piece back onto the lathe to round the outside. Then he finds the center using the tool rest to locate the place to draw a line for cutting it in two trying to align the grain as he does so. With a piece of scrap wood, Steve marks the center line. He uses tape to mark the line and gaffers tape to hold everything together. Next he sets up the fence on his table saw. Now he will cut it in half.



Steve hollows out around the tenon leaving a 3/8ths inch rim on the edge.



Steve rounds the outside of the blank.



Pictured is the blank with a concave inside.



The blank is now ready for marking the center line and cutting.



Wayne with Charlie.



Pictured is Charlie Brown, segmented by Wayne Miller. Wayne was driving home and heard the song, "Charlie Brown" on the radio. The rest is inspiration and history.



Mike is pictured on the VCR screen and in person describing his procedure with the three ovals.



Pictured is a turning by Michael Veno of three ovals on a post. It's all one piece. Mike made a special tool which allowed him to remove material at an angle. Then he dyed them.

Show & Tell



Pictured is a quite large (16" diameter) spalted maple lidded container turned by Melissa Fantasia.



Tim holds "Red Headed Charlie" while he explains how Charlie was created.



Pictured is "Red Headed Charlie", turned and otherwise created by Tim Rix. Charlie was made from ash, mulberry, and faux fur. Hot melt glue holds it all together.



Here is a photo with both the bottom and the top of the piece. Nice piece.

Show & Tell



Pictured is a cherry bowl with green resin, turned by Melissa



Pictured is the bottom of a bowl turned by Melissa from Arboretum wood.



Melissa holds her cherry and green resin bowl.



Melissa showed us a small bowl turned from Arboretum wood.

Show & Tell



Joe Feeny holds a large red cedar bowl he turned. He said it just kept getting thinner, and then it was just right.



New member, Chad Hasson has a vase he turned from persimmon. He worked on it with assistance from Bob Allen and finished it with Yorkshire grit and walnut oil.



Here is a large shallow bowl from the lathe of Ken Lindgren. It is ash with many wormholes which Ken back filled before finishing.



Ken brought some notes up with him in reference to his ash bowl



Show & Tell



Mike Fullerton holds his segmented goblet turned from redwood, rosewood and cherry.. He refers to its shape as “balloon glass” and it has 115 segments.



Steve holds two goblets turned from some olive wood given to him by Mike Fullerton. He coated them with epoxy to make them water resistant.



Pictured is a closeup of Mike’s goblet. Nice tight fit.



A closeup of Steve’s goblets.

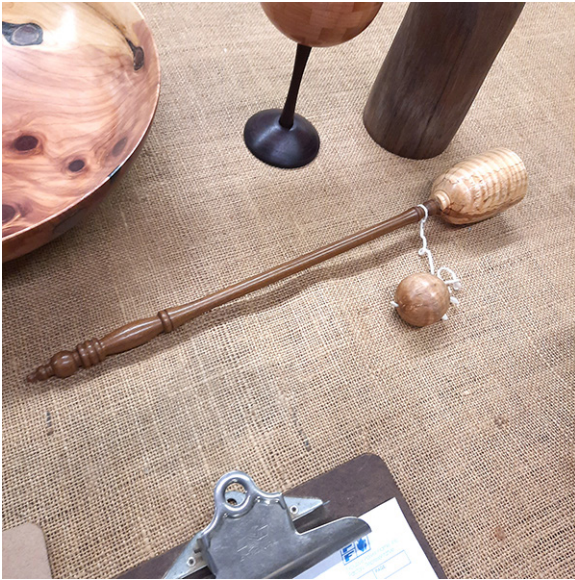


Bringback

At monthly meetings, members receive a raffle ticket.

Winners get turning created by the previous Bring Back winner.

Each new winner then has to Bring Back one of their own turnings for the next meeting.



Pictured is the stick ball toy Jeff Keller turned from Brazilian cherry and quilted maple. The string is from a Christmas grab gift he won from Charlie McCarthy.



Pictured is the happy winner of the stick ball toy, Joe Wheeler.



Joe Feeny holds Bringback #2, a half bowl in cherry.



Joe's bringback was won by Steve Wiseman.